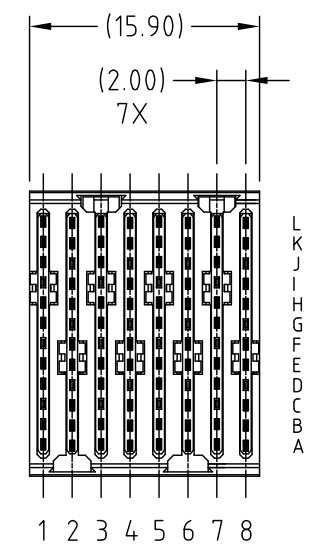
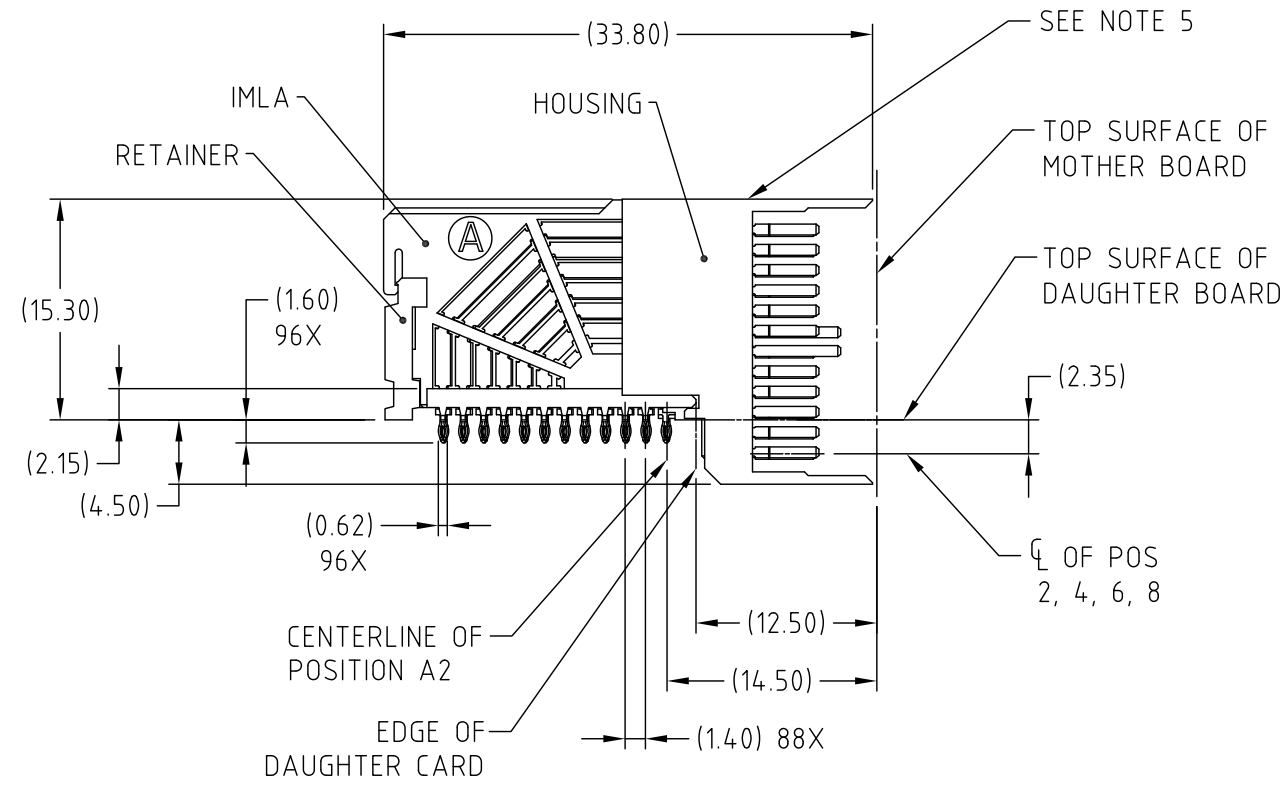


This document is the property of Amphenol Corporation and is delivered on the express condition that it is not to be disclosed, reproduced or used, in whole or in part, for manufacture or sale by anyone other than Amphenol Corporation without its prior consent, & that no right is granted to disclose or to use any information in this document.

REVISIONS				
SYM	ECN	DESCRIPTION	DATE	APPROVED
A	HK5947	RELEASE FOR CUSTOMER	11/5/09	Charles

ORDERING PN AA24008000

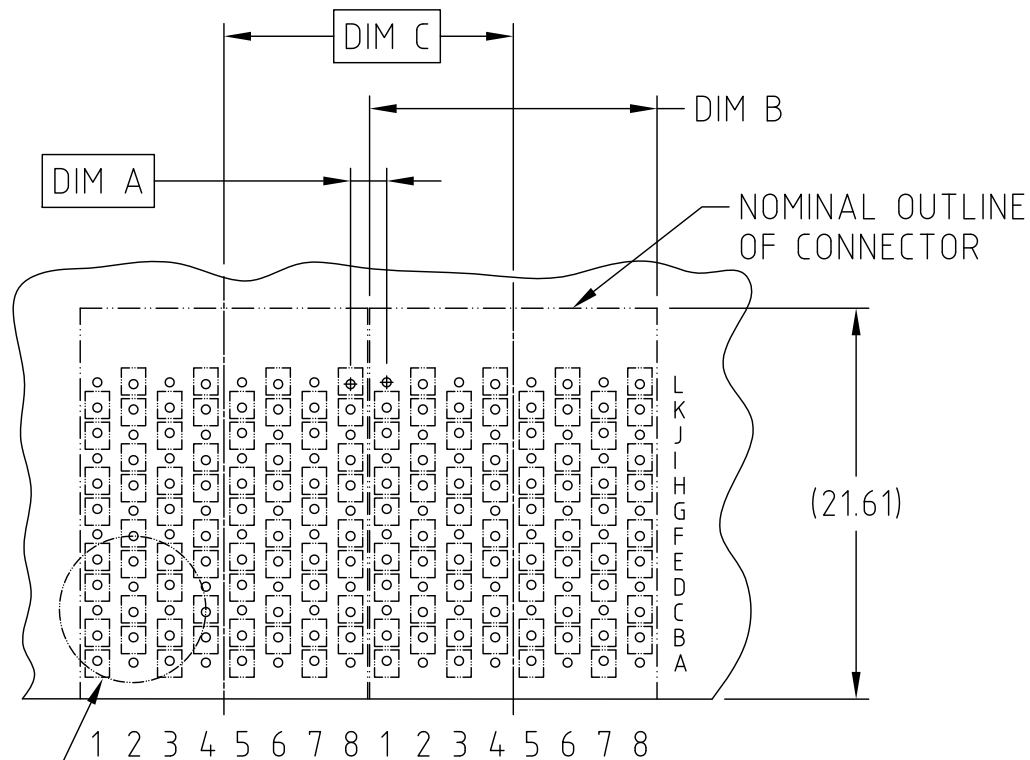


UNLESS OTHERWISE SPECIFIED <b>TOLERANCES</b> U.S. METRIC .X +/- 0.3 .XX +/- 0.1 .XXX +/- FRACTIONS +/- ANGLES +/- 2°	<b>APPROVAL</b> DRAWN Jerry CHECKED Charles APPROVED	<b>DATE</b> 11/5/09 11/5/09	<b>Amphenol</b> AirMax VS RA HEADER ASSY PRESS-FIT, 96 POS, 16MM	
	<b>DRAWING FILE :</b> DRAWING\AMX\C AA24008000			
	<b>REMOVE SHARP EDGES</b> <b>DIMENSIONS</b> U.S. INCHES (METRIC) (MM)			<b>ANGLE OF PROJECTION</b> 
	<b>SIZE</b> A3	<b>DRAWING NO.</b> C AA24008000		<b>REV.</b> A
<b>SCALE</b> 1:1		<b>SHEET 1 OF 5</b>		

This document is the property of Amphenol Corporation and is delivered on the express condition that it is not to be disclosed, reproduced or used, in whole or in part, for manufacture or sale by anyone other than Amphenol Corporation without its prior consent, & that no right is granted to disclose or to use any information in this document.

REVISIONS				
SYM	ECN	DESCRIPTION	DATE	APPROVED
		SEE SHEET 1		

DESCRIPTION	DIM A	DIM B	DIM C
2-16MM MODULES PLACED END-TO-END	2.00	15.90 2X	16.00
1-16MM MODULE & 1-18MM MODULE PLACED END-TO-END	3.00	15.90 1X & 17.90 1X	17.00



DETAIL A

RECOMMENDED PCB LAYOUT FOR DIFFERENTIAL APPLICATIONS COMPONENT SIDE (TWO ADJACENT FOOTPRINTS SHOWN) NOTES 6 & 7



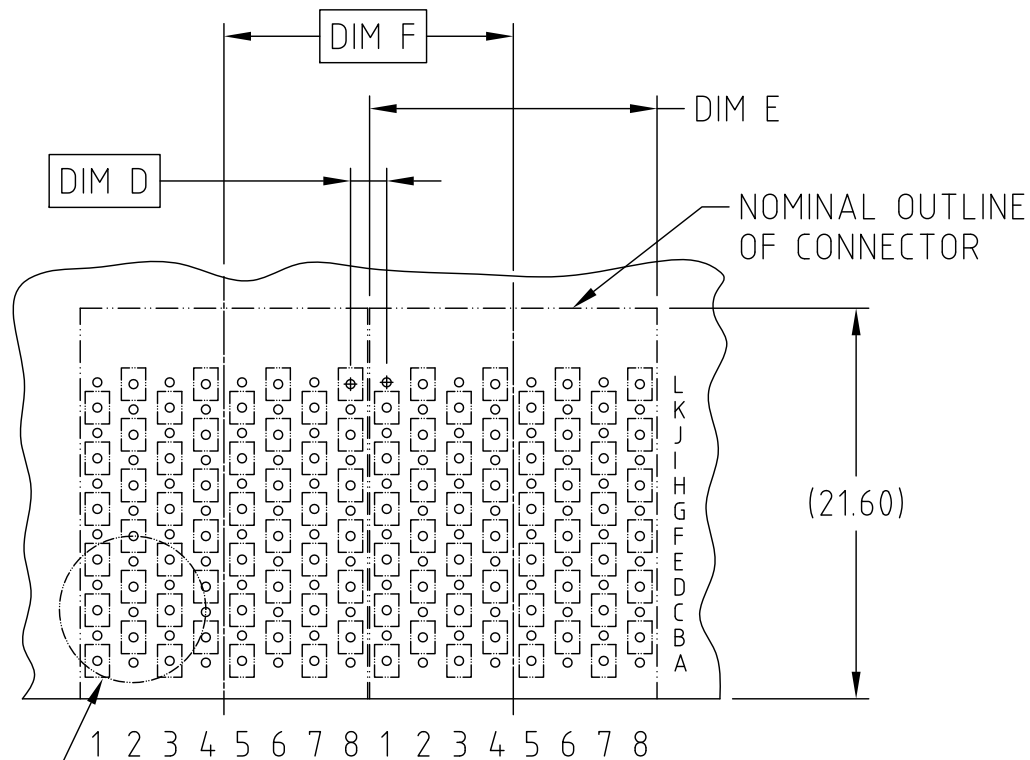
UNLESS OTHERWISE SPECIFIED TOLERANCES U.S. METRIC .X +/- 0.2 .XX +/- 0.1 .XXX +/- 0.05 FRACTIONS +/- ANGLES +/- 2°	APPROVAL	DATE
	DRAWN Jerry	11/5/09
	CHECKED Charles	11/5/09
	APPROVED	
FOR MATERIALS AND FINISHES SEE NOTES	DRAWING FILE :	
	DRAWING/AMXC AA24008000	
REMOVE SHARP EDGES	ANGLE OF PROJECTION	
DIMENSIONS		
— U.S. — INCHES —		
(METRIC) (MM)		

Amphenol		
TITLE AirMax VS RA HEADER ASSY PRESS-FIT, 96 PDS, 16MM		
SIZE	DRAWING NO.	REV.
A3	C AA24008000	A
SCALE	1:1	SHEET 2 OF 5

This document is the property of Amphenol Corporation and is delivered on the express condition that it is not to be disclosed, reproduced or used, in whole or in part, for manufacture or sale by anyone other than Amphenol Corporation without its prior consent, & that no right is granted to disclose or to use any information in this document.

REVISIONS				
SYM	ECN	DESCRIPTION	DATE	APPROVED
		SEE SHEET 1		

DESCRIPTION	DIM D	DIM E	DIM F
2-16MM MODULES PLACED END-TO-END	2.00	15.90 2X	16.00
1-16MM MODULE & 1-18MM MODULE PLACED END-TO-END	3.00	15.90 1X & 17.90 1X	17.00



DETAIL B

RECOMMENDED PCB LAYOUT  
FOR SINGLE ENDED APPLICATIONS  
COMPONENT SIDE  
(TWO ADJACENT FOOTPRINTS SHOWN)  
NOTES 6 & 7

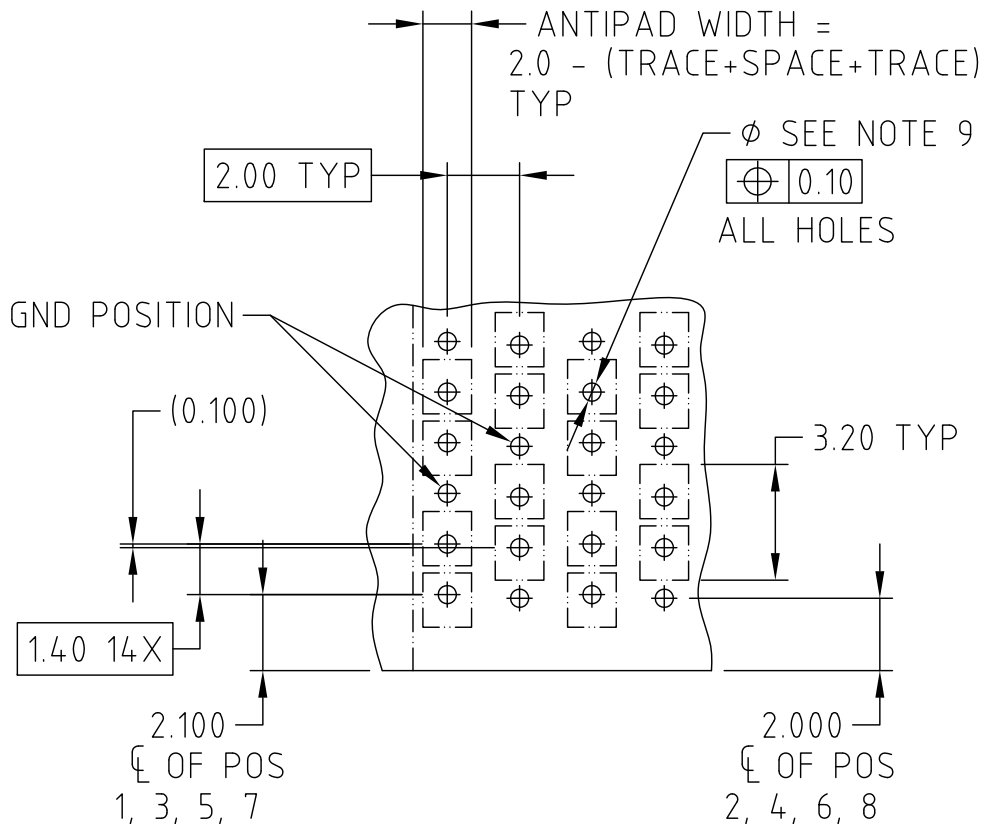


UNLESS OTHERWISE SPECIFIED TOLERANCES U.S. METRIC .X +/- 0.2 .XX +/- 0.1 .XXX +/- 0.05 FRACTIONS +/- ANGLES +/- 2°	APPROVAL	DATE
	DRAWN Jerry	11/5/09
	CHECKED Charles	11/5/09
	APPROVED	
FOR MATERIALS AND FINISHES SEE NOTES	DRAWING FILE : DRAWING\AMXC AA24008000	
	ANGLE OF PROJECTION 	
REMOVE SHARP EDGES		
DIMENSIONS		
— U.S. —	— INCHES —	
(METRIC)	(MM)	

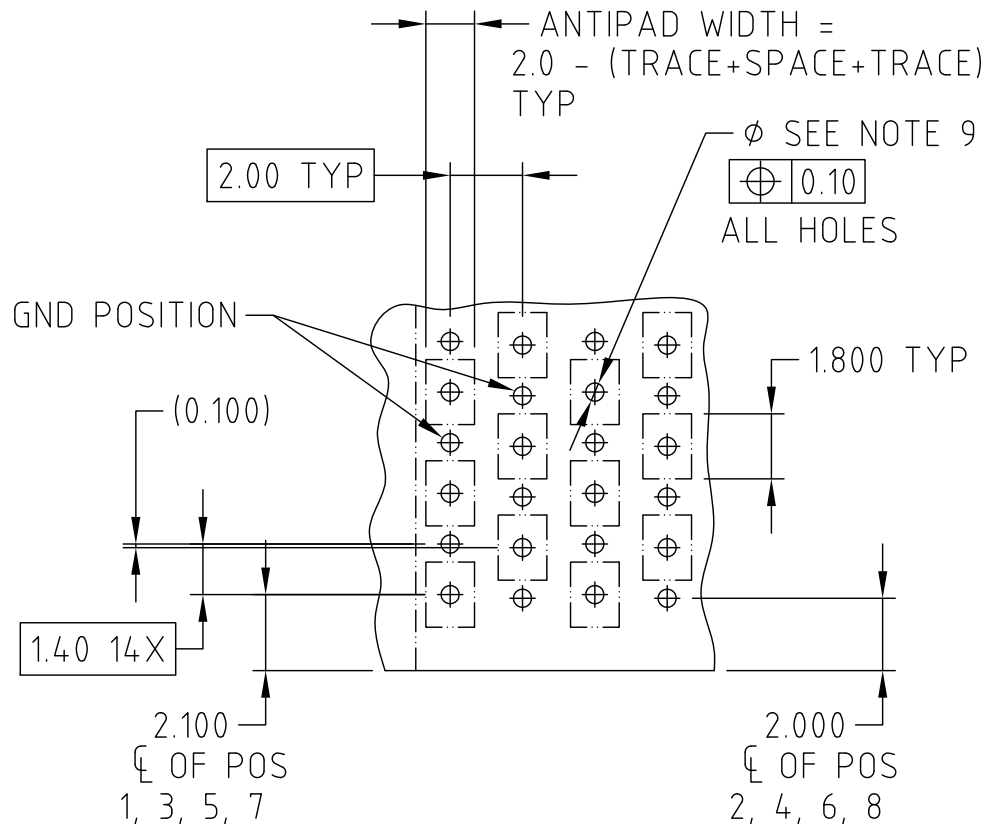
Amphenol		
TITLE AirMax VS RA HEADER ASSY PRESS-FIT, 96 PDS, 16MM		
SIZE A3	DRAWING NO. C AA24008000	REV. A
SCALE 1:1	SHEET 3 OF 5	

This document is the property of Amphenol Corporation and is delivered on the express condition that it is not to be disclosed, reproduced or used, in whole or in part, for manufacture or sale by anyone other than Amphenol Corporation without its prior consent, & that no right is granted to disclose or to use any information in this document.

REVISIONS				
SYM	ECN	DESCRIPTION	DATE	APPROVED
SEE SHEET 1				



DETAIL A  
SCALE 2:1



DETAIL B  
SCALE 2:1



UNLESS OTHERWISE SPECIFIED TOLERANCES U.S. METRIC .X +/- 0.2 .XX +/- 0.1 .XXX +/- 0.05 FRACTIONS +/- ANGLES +/- 2°	APPROVAL	DATE
	DRAWN Jerry	11/5/09
	CHECKED Charles	11/5/09
	APPROVED	
FOR MATERIALS AND FINISHES SEE NOTES REMOVE SHARP EDGES	DRAWING FILE : DRAWING\AMXC AA24008000	
	ANGLE OF PROJECTION	
DIMENSIONS		
— U.S. —	— INCHES —	
(METRIC)	(MM)	

Amphenol		
TITLE AirMax VS RA HEADER ASSY PRESS-FIT, 096 PDS, 16MM		
SIZE	DRAWING NO.	REV.
A3	C AA24008000	A
SCALE	1:1	SHEET 4 OF 5

This document is the property of Amphenol Corporation and is delivered on the express condition that it is not to be disclosed, reproduced or used, in whole or in part, for manufacture or sale by anyone other than Amphenol Corporation without its prior consent, & that no right is granted to disclose or to use any information in this document.

REVISIONS				
SYM	ECN	DESCRIPTION	DATE	APPROVED
		SEE SHEET 1		

NOTES:

- ① CONNECTOR MATERIALS:  
HOUSING & RETAINER: HIGH TEMP THERMOPLASTIC, NATURAL, UL 94V-0  
IMLA PLASTIC: HIGH TEMP THERMOPLASTIC, BLACK, UL 94V-0  
CONTACT: COPPER ALLOY
- 2. CONTACT PLATING:  
SEPARABLE INTERFACE: GOLD OVER NICKEL  
PRESS-FIT TAILS: PURE TIN OVER NICKEL
- 3. PRODUCT SPECIFICATION: S-AMX-01
- 4. APPLICATION SPECIFICATION: S-AMX-02
- ⑤ PRODUCT MARKING, (PART NUMBER & LOT CODE), ON THIS SURFACE
- ⑥ REFER TO CUSTOMER DRAWING C AMX-PCB-001 FOR INFORMATION REGARDING PCB LAYOUT OF POWER AND GUIDE MODULES RELATIVE TO SIGNAL MODULES
- ⑦ POSITIONS F OF ODD NUMBERED COLUMNS AND POSITIONS G OF EVEN NUMBERED COLUMNS CORRESPOND TO EARLY MATE HEADER PINS
- 8. THERE IS NO GROUND BUSSING WITHIN THE CONNECTOR SYSTEM
- ⑨ REFER TO CUSTOMER DRAWING C AMX-PCB-002 FOR INFORMATION ON PCB HOLE DIAMETERS AND PLATING OPTIONS.



UNLESS OTHERWISE SPECIFIED <b>TOLERANCES</b> U.S. METRIC .X +/- 0.2 .XX +/- 0.1 .XXX +/- 0.05 FRACTIONS +/- ANGLES +/- 2°	APPROVAL	DATE	Amphenol TITLE AirMax VS RA HEADER ASSY PRESS-FIT, 96 PDS, 16MM
	DRAWN Jerry	11/5/09	
	CHECKED Charles	11/5/09	
	APPROVED		
FOR MATERIALS AND FINISHES SEE NOTES	DRAWING FILE : DRAWING\AMX\C AA24008000		SIZE A3
REMOVE SHARP EDGES	ANGLE OF PROJECTION		DRAWING NO. C AA24008000
DIMENSIONS			REV. A
U.S. INCHES (METRIC) (MM)			SCALE 1:1 SHEET 5 OF 5