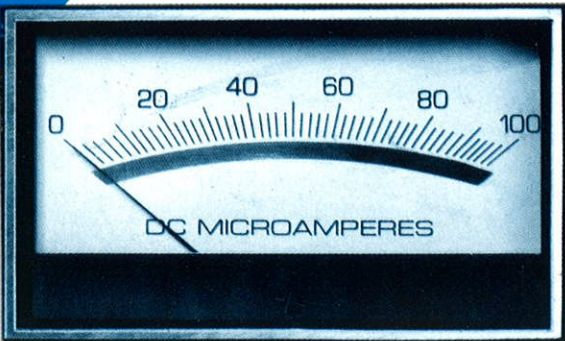


'BA' option

BEZEL MOUNTS FOR METERS

1 1/2", 2 1/2", 3 1/2", 4 1/2", 5 1/2" sizes



BA1 — Brushed metallized inline bezel, black meter cover.

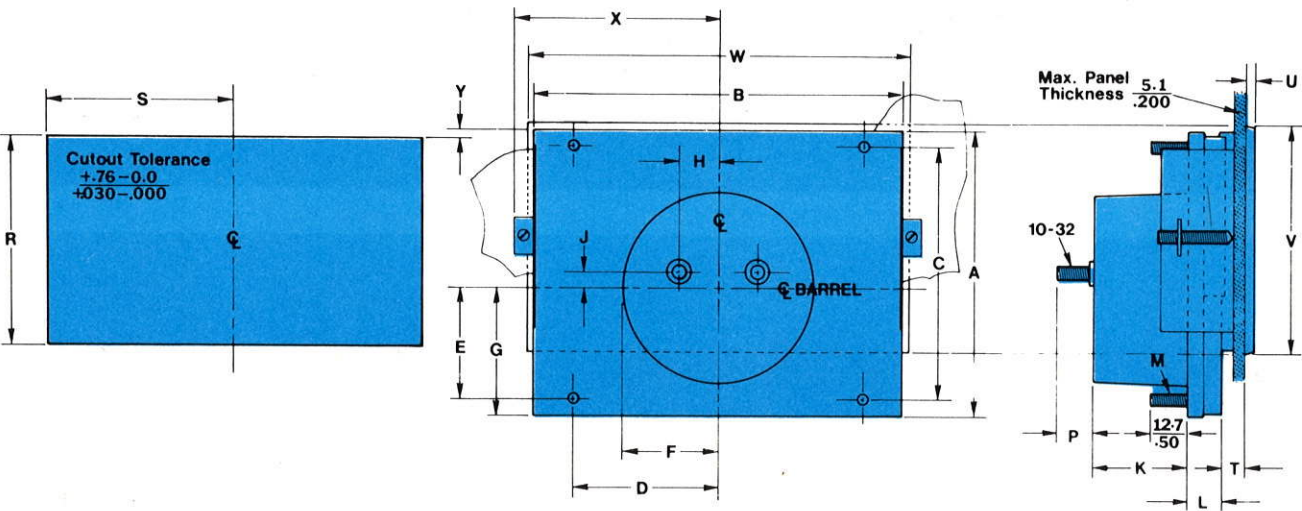


BA3 — Solid black bezel, black meter cover.

- Enhances panel appearance — gives a custom look.
- Protects meter from damage.
- Easily installed with hardware supplied.
- Available in S Series types and ranges.
- Wide selection of options available.

Modutec bezels are slender and graceful — protrude less than 1/8" from the panel surface. They are molded of an engineered high-strength plastic which makes them very resistant to damage and corrosion yet permits minimum cross-section consistent with function.

The BA kit is actually a convenient way of ordering a complete meter-bezel assembly — a package made up of meter, bezel, hardware, and mounting instructions. Bezels only may also be ordered, for use with meters already on hand. Either of the bezels shown may be ordered as standard. Bezels are also available in colors — see page 40.



		A	B	C	D	E	F	G	H	J	K	L	M	P	R	S	T	U	V	W	X	Y
1½"	mm.	44.5	56.9	33.3	16.8	16.8	19.3	21.1	12.2	3.0	33.0	8.6	6.4	34.8	28.6	5.3	2.5	38.4	60.7	34.8	0.3	
	in.	1.75	2.24	1.31	.66	.66	.76	.83	.48	.12	1.30	.34	4-40	.25	1.370	1.125	.21	1.51	2.39	1.37	.01	
2½"	mm.	57.7	75.9	47.8	23.9	23.9	27.2	28.7	14.2	5.1	33.0	10.2	12.7	40.5	38.1	5.6	3.3	44.2	80.0	44.7	0.8	
	in.	2.27	2.99	1.88	.94	.94	1.07	1.13	.56	.20	1.30	.40	4-40	.50	1.594	1.500	.22	.13	1.74	3.15	1.76	.03
3½"	mm.	72.9	94.0	57.2	28.7	28.4	33.8	36.6	14.2	0	33.0	10.4	12.7	54.8	47.2	5.8	3.6	58.4	97.8	53.8	0.3	
	in.	2.87	3.70	2.25	1.13	1.12	1.33	1.44	.56	.00	1.30	.41	4-40	.50	2.156	1.859	.23	.14	2.30	3.85	2.12	.01
4½"	mm.	100.6	129.5	90.4	50.8	39.1	33.8	44.2	14.2	0	33.0	13.0	12.7	72.2	65.1	7.4	3.0	75.9	133.1	71.6	0.3	
	in.	3.96	5.10	3.56	2.00	1.54	1.33	1.74	.56	.00	1.30	.51	6-32	.50	2.843	2.563	.29	.12	2.99	5.24	2.82	.01
5½"	mm.	113.8	148.6	76.2	66.8	21.6	33.8	40.4	14.2	0	33.0	14.0	12.7	79.8	74.4	6.9	3.6	83.6	152.4	81.0	3.8	
	in.	4.48	5.85	3.00	2.63	.85	1.33	1.59	.56	.00	1.30	.55	6-32	.50	3.140	2.930	.27	.14	3.29	6.00	3.19	.15

HOW TO ORDER BEZEL MOUNT KITS

Ordering Information: Any S Series meter, except 8" sizes, may be ordered with bezel. Specify the kit for the size of the meter as follows:

Size: 1 1/2" 2 1/2" 3 1/2" 4 1/2" 5 1/2"

Price Code: BAA BAB BAC BAD BAE

The above price codes apply to bezel mount kits purchased separately (order by description).

NOTE: Bezel mounts are available for other Modutec meters with the S Series configuration, as follows: L Series Trans-Lit Meters, LLA Series Lite-Box Meters, SWM Series Space-Saver Meters, V Series Thru-View Meters, Y Series S-type Control Meters.

OPTIONS

The optional features described below are available for immediate incorporation, except as noted, into any meter described in the preceding pages. To order, simply add the appropriate suffix letter to the catalog number of the meter and add the indicated extra charge (given in price code letters) to the list price of the meter. This is also true of the UL Recognition option described on page 42. In the case of the bezel mount option, there is a separate kit (see preceding page).

Summary of Options Available

		Available on Meter Series:								
Suffix	Option	K	L/LLA	PB	S	SWM	V	W	WM	Y
A	Improved accuracy(1)	●	●	●	●	●	●	●	●	●
—	Bezel mount kits ("BA —")		●		●	●	●			●
B	4-stud mounting	★		●	★	★				★
C	Colors, meter cover & bezel	●	●	●	●	●	●	●		●
D	Blank dials	●	●	●	●	●		●	●	●
DD	Opaque dials	★		★	★	★		★	●	★
E	Custom resistance(1) (2)	●	●	●	●	●	●	●	●	●
F	Fast response (1) (2)	●	●	●	●	●	●	●	●	●
G	Custom pointers	●	●	●	●	●	●	●	●	●
H	High temp. case & cover (3)	★		●	●	●		●	●	
IEC	ANSI symbols on dial	●	●	●	●	●	●	●	●	
KW	Illumination		● (4)		● (3)	●	● (5)	● (3)	● (5)	●
L	Hand-lettered custom dial	●	●	●	●	●	●	●	●	●
M	Mirror scale	●		●	●	●		●	● (6)	
NL	Heavy damping (8)	●	●	●	●	●	●	●	●	●
NS	Untacked covers		●	●	●	●	●	●	★	
P	Single point calibration	●	●	●	●	●	●	●	●	
R	Improved resistance	●	●	●	●	●	●	●	●	●
S	Sealed case	★	●		●	●	●	●		
T	Temperature compensation(1)		●	●	●	●	●	●	●	●
--	UL recognition(7) ("R" Prefix)			●	●			●		
U	Unit meter packaging	●	●	●	●	●	●	●	●	●
V	High resistance voltmeters(1)	●	●	●	●	●	●	●	●	●
X2	Metric studs & terminals	●	●	●	●	★	●	●	●	●
Y	Insulated terminals	●	●	●	●	●	●	●		
Z	Rear zero adjust(1)	●	●		●		●	●	●	

(1) Not available on AC types. (2) Extra time required for set-up. (3) Not available in 8" meters. (4) Illumination components furnished by user for L series; LLA series has built-in illumination. (5) Illumination components furnished by user. (6) Requires opaque dial ("DD" option). (7) Not available on 5", 8" and backlit units. (8) Not available on iron-vane types. \*Furnished as standard.

'A1', 'A2', 'A3' Improved Accuracy

Catalog meters (DC) meet specifications of 1.5% tracking and 2% accuracy of full scale, which may be improved as follows:

Calibration*	Additional Charge	Suffix
±1% tracking, ±1% accuracy	DC	
±0.5% tracking, ±2% accuracy	HAA	A1
±0.5% tracking, ±1% accuracy	HAB	A2
	HAC	A3

\*Assumes vertical operating position unless otherwise specified. Note: "A2" and "A3" must also incorporate mirror scale ("M" option).

'B' Four-Stud Mounting

"B" Suffix no additional charge

Standard PB Series meters are furnished for 3-stud mounting in the 2 1/2" and 3 1/2" sizes and 2-stud mounting in the 1 1/2" size. Under this option, all sizes are fitted for 4-stud mounting (see page 11).



# 'M' series moving magnet

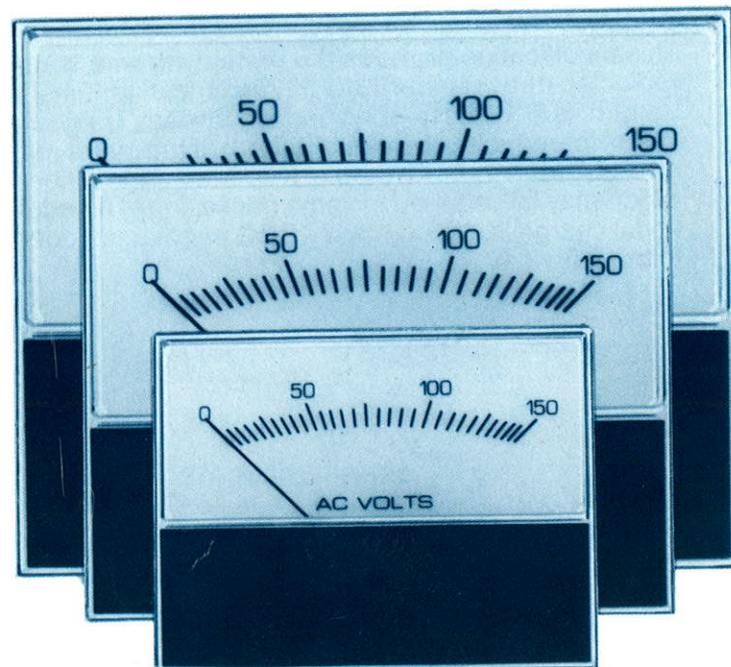
## PANEL METERS AND INDICATORS

### FEATURES

- Mount flush or surface without modification.
- Precision-molded covers and cases. UL recognized plastic optional.
- Accuracy 5% of full scale.
- High torque, powerful ballistic movements permit mounting in steel panels without special calibration.
- Beautiful styling with subtle translucent lighting available in rectangular and square models.
- Production-engineered quick mounting and electrical connections.

### 1MAS, 2MAS, 3MAS Rectangular Meters — 1½", 2½", 3½"

Attractive contemporary designs with the typical Modutec low aspect ratio. All have operating zero adjusters, and scales printed on translucent plastic, permitting beautifully diffused lighting using either the external light kit described in "Options" or custom light source.



### MD, ME Edgewise Meters 1¼", 2"

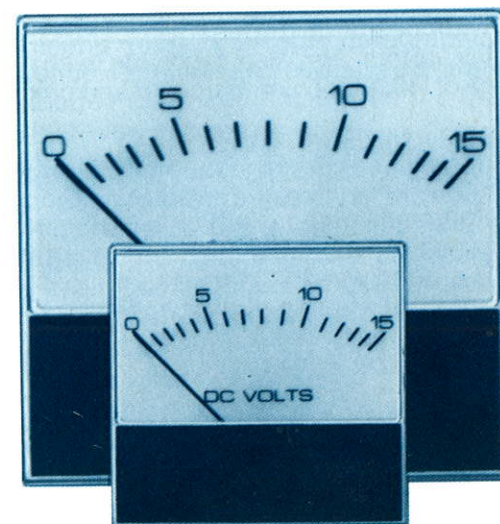
Useful space saving meters in three sizes, interchangeable with many costly d'Arsonval meters or moving magnet meters from other sources.

All sizes feature flush-to-panel covers without the bulge that disfigures many edgewise meters. A low-cost option provides internal illumination through a translucent dial — sophisticated lighting unusual in any economy meter, let alone an edgewise type.



### OMS & MSQ Square Meters — 1½", 2½"

Traditional square meters with the look of the 80s and a low price tag, these have operating zero adjusters and scales printed on translucent plastic, permitting diffused back-lighting using either the external light kit described in "Options" or custom lighting. Installation holes and cutouts are interchangeable with domestic and foreign designs, making product improvement quick and easy.



METERS SHOWN ACTUAL SIZE

### SPECIFICATIONS

Accuracy: ±5% of full scale  
(3% available as option)\*

Temperature range:  
0°C to +50°C operating  
-20°C to +60°C storage

\*In normal operating attitude, i.e., mounted on vertical surface, so that scale reads horizontally. Notify factory if meters are to be operated differently.

Degrees of arc, Scale Length:	MD	ME	°Arc	Scale Length
			n/a	0.96"
			n/a	1.31"
	OMS	80		1.1"
	MSQ	90		2.0"
	1MAS	90		1.5"
	2MAS	90		2.2"
	3MAS	90		2.7"

