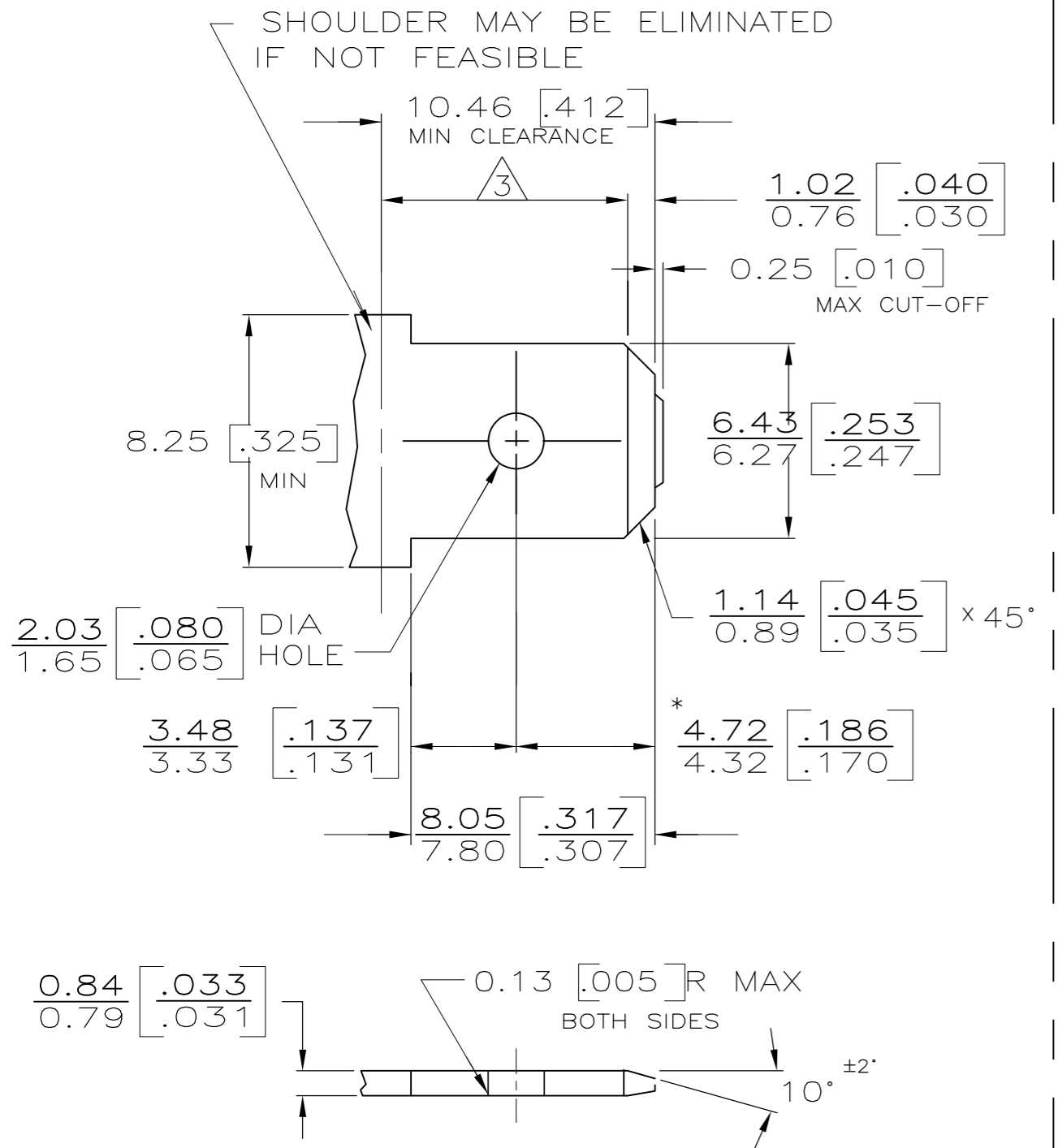


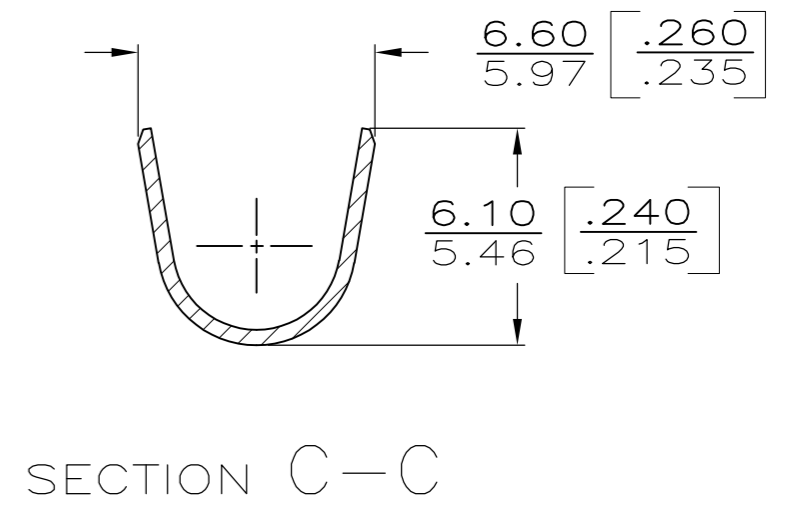
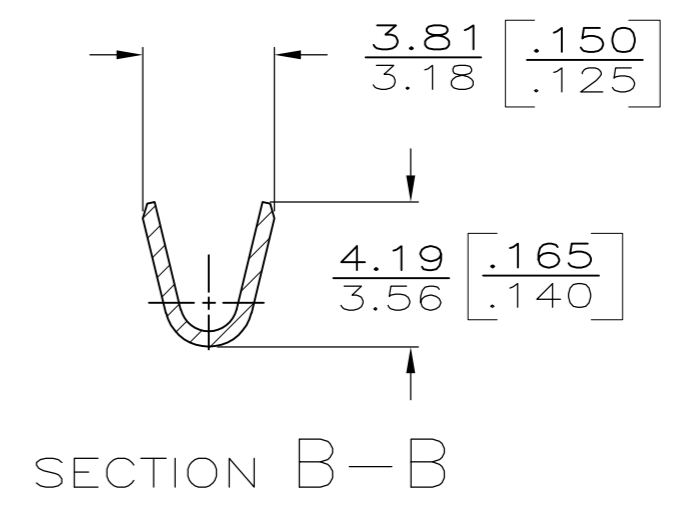
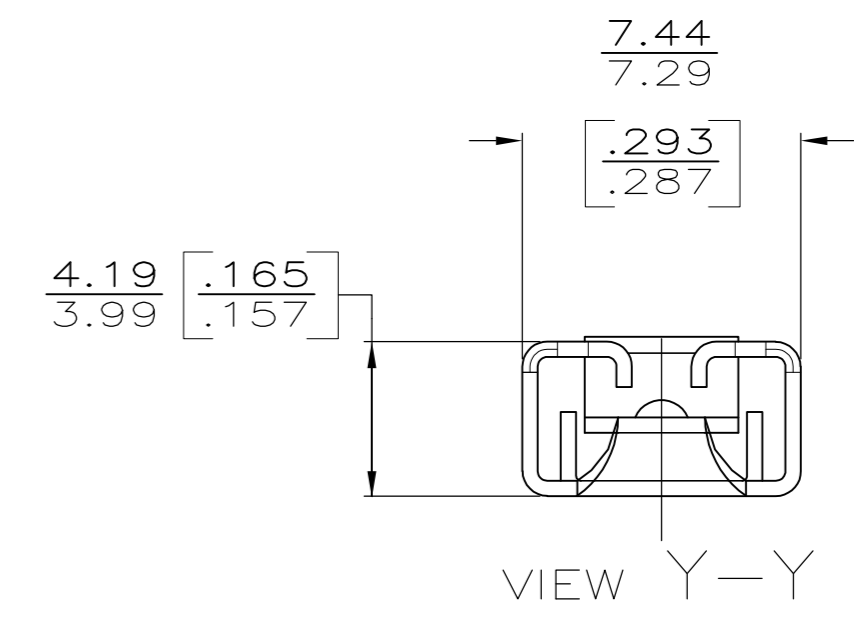
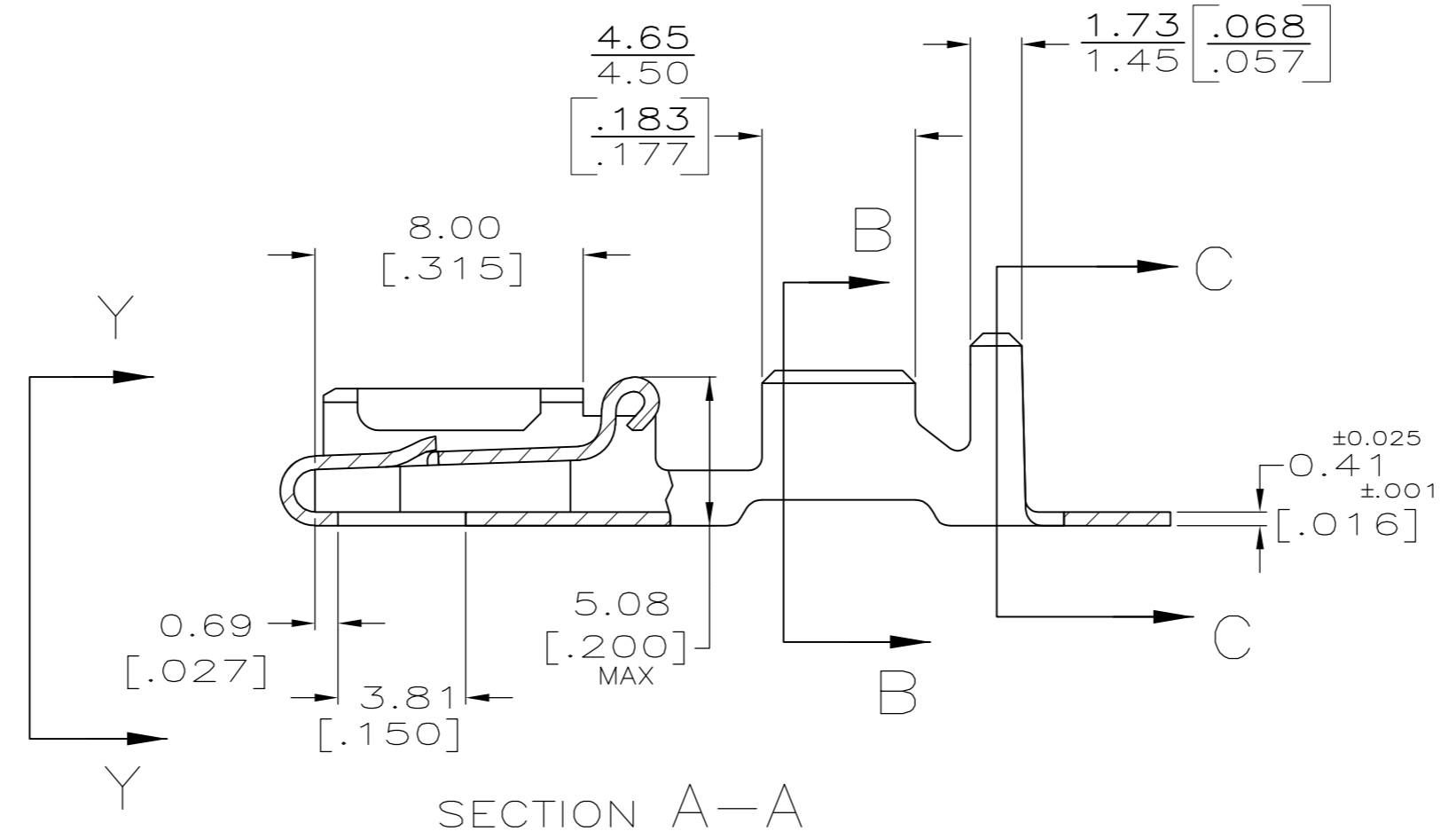
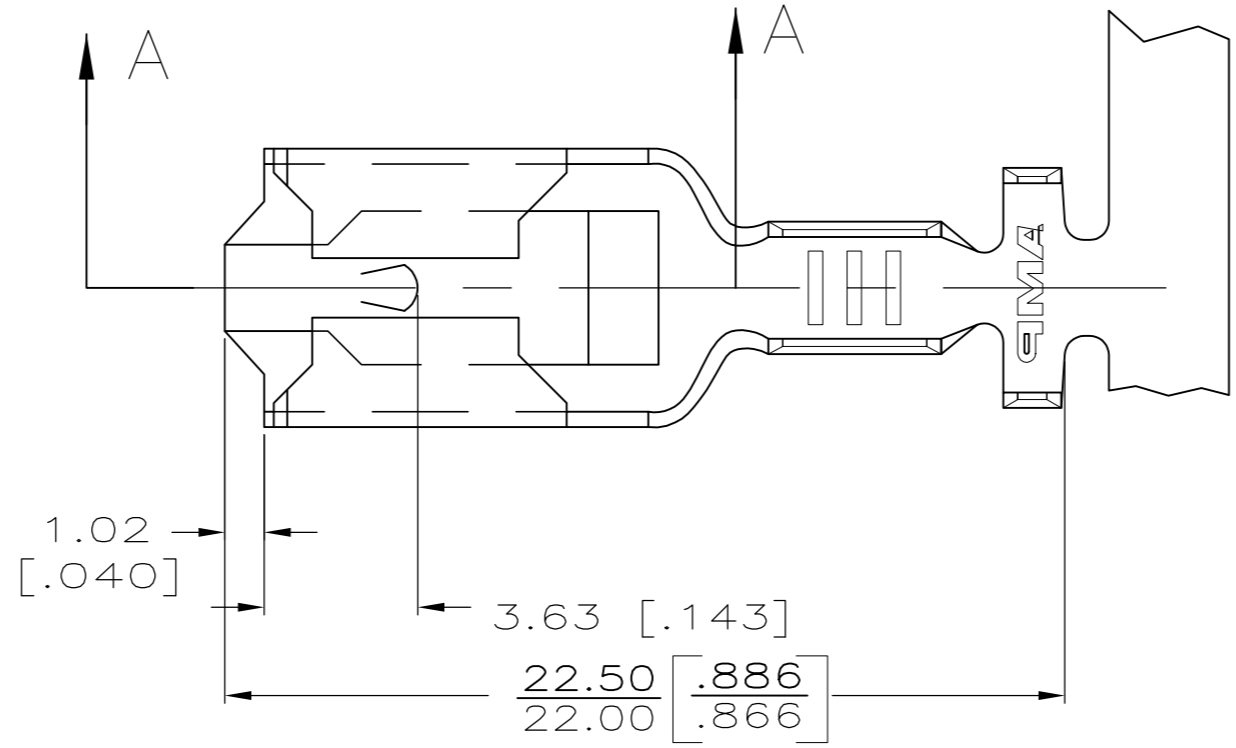
THIS DRAWING IS UNPUBLISHED. RELEASED FOR PUBLICATION. ALL RIGHTS RESERVED.

LOC	DIST	REVISIONS					
AF	50	P	LTR	DESCRIPTION	DATE	DWN	APVD
		C		REV PER ECO 12-004209	05MAR12	JR	KR

SUGGESTED MATING TAB



- 1 - MATL: 1/2H BRASS OR NICKEL PL STEEL.
 - 2 - NO BURRS PERMISSIBLE AT HOLE.
 - 3 - MUST BE FLAT WITHIN 0.076 [.003] OVER THIS LENGTH.
 - 4 - TIN PLATING IS REQUIRED ON BRASS WHEN TERMINAL TEMP. IS OVER 225° F.
 - 5 - HOLE MUST BE SYMMETRICAL ABOUT TAB Q WITHIN 0.076 [.003]
- * TO BE USED ONLY WHEN SHOULDER IS ELIMINATED.



3.43-4.95 DIA [.135-.195] DIA	0.7-2.0mm ² [#18-#14] AWG	0.81 [.032]	63812-1
INSULATION RANGE	WIRE SIZE	MATING TAB THK ±0.025 [.001]	PART NO.

F OR O	5.33 [.210]	5.84 [.230]	F	2.79 [.110]	1.88 [.074] [#14]	1.65 [.065] [#16]	1.47 [.058] [#18]	±0.051 [±.002] ±[.015]	THIS DRAWING IS A CONTROLLED DOCUMENT.	DWN JR RUTH 10/14/94	 TE Connectivity RECEPTACLE, POSITIVE-LOCK, MK I, 6.35 [.250] SERIES				
TYPE	WIDTH	STRIP LENGTH ±0.38 ±[.015]	TYPE	WIDTH	HEIGHT	WIRE			DIMENSIONS: MM [INCHES]	TOLERANCES UNLESS OTHERWISE SPECIFIED:		CHK MS FEHER 10/14/94			
INSUL BARREL CRIMP			WIRE BARREL CRIMP						0 PLC ± -	1 PLC ± -		2 PLC ± 0.25 [.010]	APVD D REINER 10/14/94		
									3 PLC ± -	4 PLC ± -		ANGLES ± -	PRODUCT SPEC		
									MATERIAL H06 BRASS	FINISH TIN PLATE	APPLICATION SPEC	APVD			
											WEIGHT -	SIZE A2	CAGE CODE 00779	DRAWING NO C=63812	RESTRICTED TO -
											CUSTOMER DRAWING	SCALE 5:1	SHEET 1 of 1	REV C	