

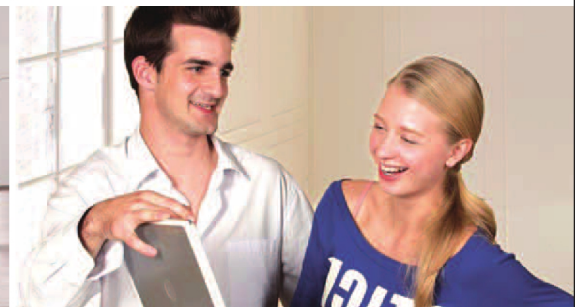
Wireless N ADSL2+ Modem Router TD-W8960N



3-in-1: ADSL2+ modem,
4-port Ethernet router
and wireless N access point

300Mbps wireless
transmission rate, brings
smooth wireless N experience

Various QoS policies
enable various application,
meeting people's different needs



Description:

The TD-W8960N Wireless N ADSL2+ Modem Router is an All-in-One device that combines the functions of a high speed DSL modem, a 4-Port 10/100Mbps NAT router and a wireless access point. It is designed to give you a one-stop solution to acquire and share high speed Internet access over a wired/wireless network. Supporting the latest ADSL standards, the TD-W8960N brings with it much higher speed than a dial-up connection without tying up the phone line. Complying with the IEEE 802.11n, users will get

up to 15X the speed and 5X the range of conventional 11g products. Now you can enjoy more kinds of bandwidth consuming applications like HD video streaming wirelessly which can not be accommodated by 11g products, from anywhere in your entire home or even the yard. In addition, with the function of IPSec VPN (site-to-site), TD-W8960N can guarantee the security of the data transmission from home to corporate network or between remote branch offices.

Specifications:

Interfaces	1 RJ11 port, 4 Ethernet ports, support IEEE802.3,802.3u
Data Rates	Downstream: Up to 24Mbps Upstream: Up to 3.5Mbps With Annex M enabled
ADSL Features	Full-rate ANSI T1.413 Issue 2 ITU-T G.992.1 (G.dmt) ITU-T G.992.2 (G.lite) ITU-T G.994.1 (G.hs) ITU-T G.992.3 (G.dmt.bis) ITU-T G.992.5 Supports Annex A/L/M Max 6 kilometers
ATM Features	UNI 3.1 ATM Adaptation Layer Type 5-AAL5 Multiprotocol encapsulation over ATM (RFC 1483) UBR, CBR, VBR-rt, VBR-nrt Supports 8PVCs
PPP Features	PPP over ATM (RFC 2364) PPP over Ethernet (RFC 2516)
Switching Features	IGMP snooping IGMP multicast IEEE 802.1d transparent learning bridging Classical IP and ARP over ATM (RFC 1577/2225), RIP V1/V2 MAC Encapsulation Routing
Routing Features	Static routing, IP, TCP, UDP, ARP NAT, NATP, DNS, DDNS, DHCP Server UPnP, Virtual Server, DMZ, Port Trigger SIP, H323 ALG
Wireless Features	Complies with IEEE 802.11n ,IEEE 802.11g, IEEE802.11b Wireless speed up to 300M Provides WPA/WPA2 and WPA-PSK/WPA2-PSK authentication and TKIP/AES encryption security Provides 64/128-bit WEP encryption security and wireless LAN ACL (Access Control List) Max wireless transmit power: 19dbm Antenna power: 3dbi
Security	NAT and SPI Firewall, Packet Filter
VPN	Support up to 10 IPSec VPN tunnels
VPN Pass Through	IPSec/PPTP/L2TP Pass-through
QoS	IP Type of service(ToS) 802.1p HTTP, Console
Device Management	Administration and operation software (firmware) upgradable locally by web(HTTP), console(TFTP) CWMP TR-069
Led	Power, Internet, ADSL, WLAN, LAN1~4,QSS
Operating Temperature	0°C~40°C (32°F~104°F)
Storage Temperature	-40°C~70°C (-40°F~158°F)
Operating Humidity	10% ~ 90%, non condensation
Storage Humidity	5%~90% non-condensing
Dimensions(L x W x H)	7.9 x 5.5 x 1.1 in.(200 x 140 x 28mm)

Features:

- High speed DSL modem, NAT router and wireless access point in one device provides one-stop networking solution
- Wireless N speed up to 300Mbps makes it ideal for bandwidth consuming or interruption sensitive applications like video streaming, online gaming and VoIP
- 2T2R MIMO technology provides robust high-bandwidth wireless Tx/Rx capability at further range
- Support Annex M, which can double upstream data rates
- Support up to 10 IPSec VPN tunnels simultaneously, offering you the most economic way to connect to the company's central network securely
- Easy Setup Assistant provides quick & hassle free installation
- Easily setup a WPA encrypted secure connection at a push of the QSS button
- Dual Firewall (NAT and SPI firewall) protects LAN devices from potential attacks from across the Internet
- QoS enables smooth VoIP/IPTV streaming and lag-free online gaming
- Auto-reconnect keeps you online indefinitely
- Port-mapping binds specific LAN ports and PVCs for differential services
- TR-069 enables centralized management

Package:

- Wireless N ADSL2+ Modem Router TD-W8960N
- One DC power Adapter
- Quick Installation Guide
- One RJ45 cable
- Two RJ11 cables
- One ADSL splitter
- One Resource CD

Related Products:

- 300M Wireless Cardbus Adapter TL-W811N
- 300M Wireless USB Adapter TL-WN821N
- 300M Wireless PCI Adapter TL-WN851N

Wireless N USB Adapter TL-WN821N



Portable, Flexible, Reliable,
brings smooth
Wireless N experience

Adopts MIMO, CCA™ technology,
brings competitive performance
in 11n routers

QSS, Quick Secure Setup,
complies with WPS for
effortless wireless security setup



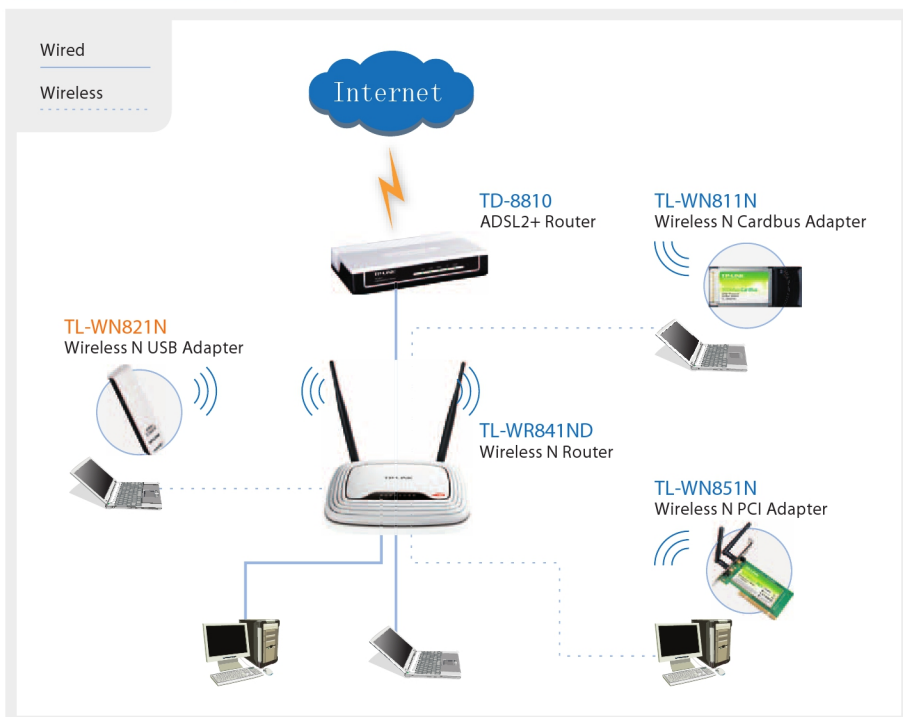
Description:

The TL-WN821N Wireless N USB Adapter complies with IEEE 802.11n, IEEE 802.11g, and IEEE 802.11b standards. Wireless transmission rates can reach up to 300Mbps. The USB adapter with internal Omni-directional antennas works well with other 11g and 11n protocol wireless products and adopts MIMO technology which can bring a faster, wider, and more stable wireless experience. This product can also simultaneously operate bandwidth intensive applications using a lot of bandwidth which are sensitive to interruption. When using multiple bandwidth intensive applications, the most sensitive of these applications can be given priority over the others to be allocated more bandwidth in order to assure quality.

Specifications:

Standards	IEEE 802.11n, IEEE 802.11g, IEEE 802.11b, CSMA/CA with ACK
Interface	USB 2.0
Wireless Signal Rates With Automatic Fallback	11n: 270/243/216/162/108/81/54/27Mbps 135/121.5/108/81/54/40.5/27/13.5Mbps 130/117/104/78/52/39/26/13Mbps 65/58.5/52/39/26/19.5/13/6.5Mbps 11g: 54/48/36/24/18/12/9/6M (adaptive) 11b: 11/5.5/2/1M (adaptive)
Frequency Range	2.4-2.4835GHz
Wireless Transmit Power	20dBm(MAX)
Modulation Type	OFDM/CCK/16-QAM/64-QAM
Receiver Sensitivity	270M: -68dBm@10% PER 130M: -68dBm@10% PER 108M: -68dBm@10% PER 54M: -68dBm@10% PER 11M: -85dBm@8% PER 6M: -88dBm@10% PER 1M: -90dBm@8% PER
Antenna Type	Omni Directional, internal
Wireless Security	64/128/152 bit WEP, WPA/WPA2, WPA-PSK/WPA2-PSK (TKIP/AES)
Certifications	CE, FCC
Support Operating System	Windows 7/Vista/XP/2000
Operating Temperature	0°C~40°C (32°F~104°F)
Storage Temperature	-40°C~70°C (-40°F~158°F)
Relative Humidity	10% ~ 90%, non condensation
Storage Humidity	5%~95% non-condensing
Dimensions	3.4 x 1.0 x 0.5 (in.) 86mm x 26mm x 12mm

Diagram:



Features:

- USB 2.0 connector
- Provides Infrastructure and Ad-Hoc modes
- 300M wireless transmission rate, adopts MIMO, CCA™ technology, allows for faster speed, further wireless coverage, more stable performance
- Quick Secure Setup, complies with WPS for worry free wireless security
- Supports 64/128/152 strength WEP encryptions, as well as WPA/WPA2 and WPA-PSK/WPA2-PSK encryptions and mechanisms
- Web-site Configuration and monitoring
- Supports Roaming technology, guarantees efficient wireless connections.
- Supports Windows 7/Vista/XP/2000

Package:

- Wireless N USB Adapter TL-WN821N
- Quick Setup Guide
- Resource CD, including:
 - TL-WN821N Wireless Client Utility and Drivers
 - User Guide
 - Other Helpful Information

Related Products:

- Wireless N Router TL-WR941ND
- Wireless N Router TL-WR841ND
- Wireless N PCI Adapter TL-WN851N

Specifications are subject to change without notice. TP-LINK is a registered trademark of TP-LINK Technologies Co., Ltd. Other brands and product names are trademarks or registered trademarks of their respective holders. No part of the specifications may be reproduced in any form or by any means or used to make any derivative such as translation, transformation, or adaptation without permission from TP-LINK Technologies Co., Ltd.

Diagram:

