

Xitanium/Fortimo LED Drivers Indoor

Fortimo LED driver 1100-3000

The new Fortimo and Xitanium electronic LED drivers are specially designed to operate LED solutions for general lighting applications. There are Xitanium LED driver versions in 17W / 24V, 25W / 36V and 45W / 80V. There are fixed-output and dimmable (trailing edge and Touch & DALI) versions. The high output voltage (up to 80V) and adjustable output current (200 to 700mA) enable operation of many LEDs (high light output) and flexibility in LED fixture design. The output current can be set by placing a resistor on your LED PCB (Level 2 board). The new housing design incorporates three different mounting options: independent, screw and click mounting. The 25W and 45W versions also feature a 12V output to operate active cooling or decorative LED light effects. The Xitanium LED driver 45W/80V is available in fixed-output version in an independent housing.

Product data

• General Characteristics

Input Frequency	50/60 Hz
Relative Humidity	95 %
IP Classification	20
Lifetime 90%	50000 hr
surv.@Tcaselife	-
System Description	-

• Operating Characteristics

12V output	Yes
Ripple current	20 %
Efficiency Range	80-90 %
Power Factor (100% load)	0.9 (min) -
Input Power max	46 W
Output Voltage Range	20-80 V
Output Current Range (mA)	200-700
Total Harmonic Distortion IEC	20 (max) %
Inrush Current Peak	48 (max) A
Inrush Current	180 us
Width to 50%	
Input Voltage Range (AC)	220-240 V
Max drivers on MCB(16A type-B)	12 (max) x

• Temperature Characteristics

T-case maximum	65 (max) C
T-ambient	-20 (min), 50 (max) C

• Product Dimensions

Length A1	138 mm
Width B1	74 mm
Height C1	32 mm
Fixing Hole Diameter D1	4.5 mm
Fixing Hole Distance	63.6 mm
Width B2	
Fixing Hole Distance	128.5 mm
Length A2	

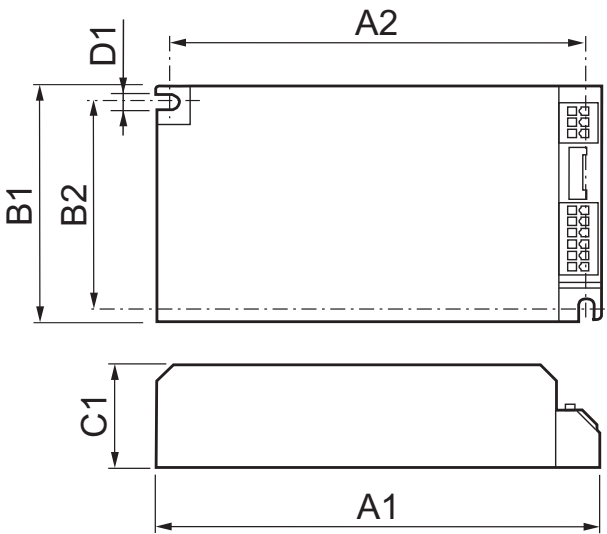
• Approval & Application Chars

Isolation classification	Class I
--------------------------	---------

• Product Data

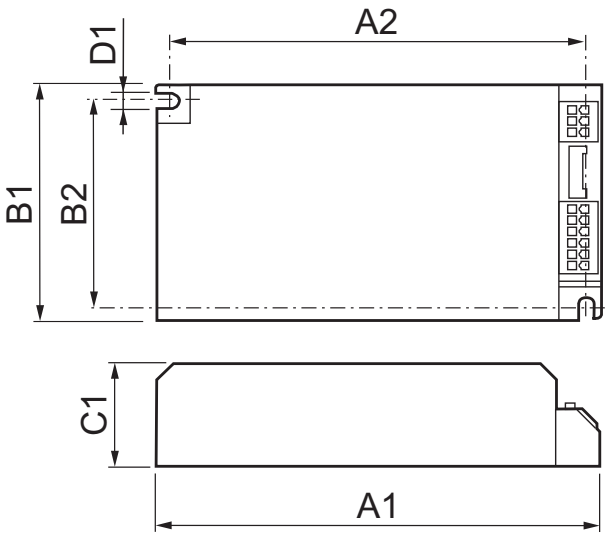
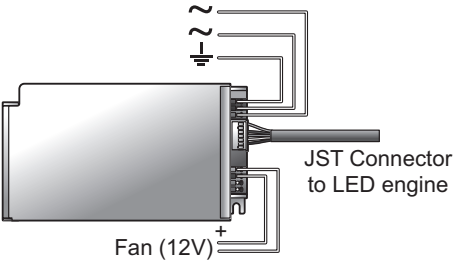
Order code	929000614403
Full product code	929000614403
Full product name	Fortimo LED driver 1100-3000
Order product name	Fortimo LED driver 1100-3000
Pieces per pack	1
Packing configuration	6
Packs per outerbox	6
Bar code on pack - EAN1	8718291546849
Bar code on outerbox - EAN3	8727900920857
Logistic code(s) - 12NC	929000614403
Net weight per piece	0.285 kg

Dimensional drawing



Fortimo LED driver 1100-3000 & 1100-3000 TD

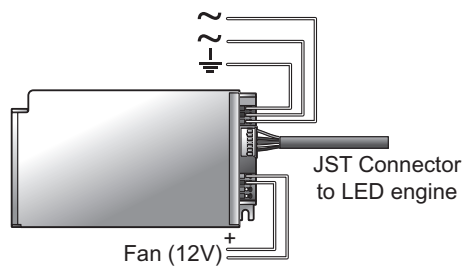
Product	A1 (Norm)	A2 (Norm)	A3 (Norm)	B1 (Norm)	B2 (Norm)	B3 (Norm)	C1 (Norm)	D1 (Norm)
Fortimo LED driver 1100-3000	138	128.5	-	74	63.6	-	32	4.5



LED DLM driver 50W/Food

Product	A1 (Norm)	A2 (Norm)	A3 (Norm)	B1 (Norm)	B2 (Norm)	B3 (Norm)	C1 (Norm)	D1 (Norm)
Fortimo LED driver 1100-3000	138	128.5	-	74	63.6	-	32	4.5

Dimensional drawing



© 2012 Koninklijke Philips Electronics N.V.
All rights reserved.

Specifications are subject to change without notice. Trademarks are the property of Koninklijke Philips Electronics N.V. or their respective owners.

www.philips.com/lighting

2012, June 5
data subject to change