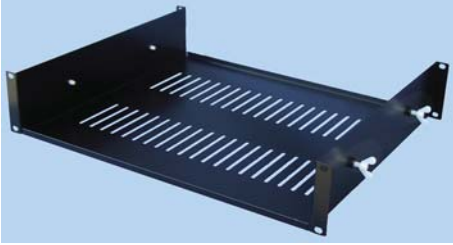


## 19" Shelf Unit

*Rackz*  
Limited



A 2U shelf kit manufactured from sheet steel and finished in black powder paint. Designed to accommodate free standing equipment with two nylon screws, allowing items to be gripped without damage. Dimensions (WxHxD): 400x90x390mm.

385671

**Order Code**  
**870-2497**

**Price Each**