

FIG. 1

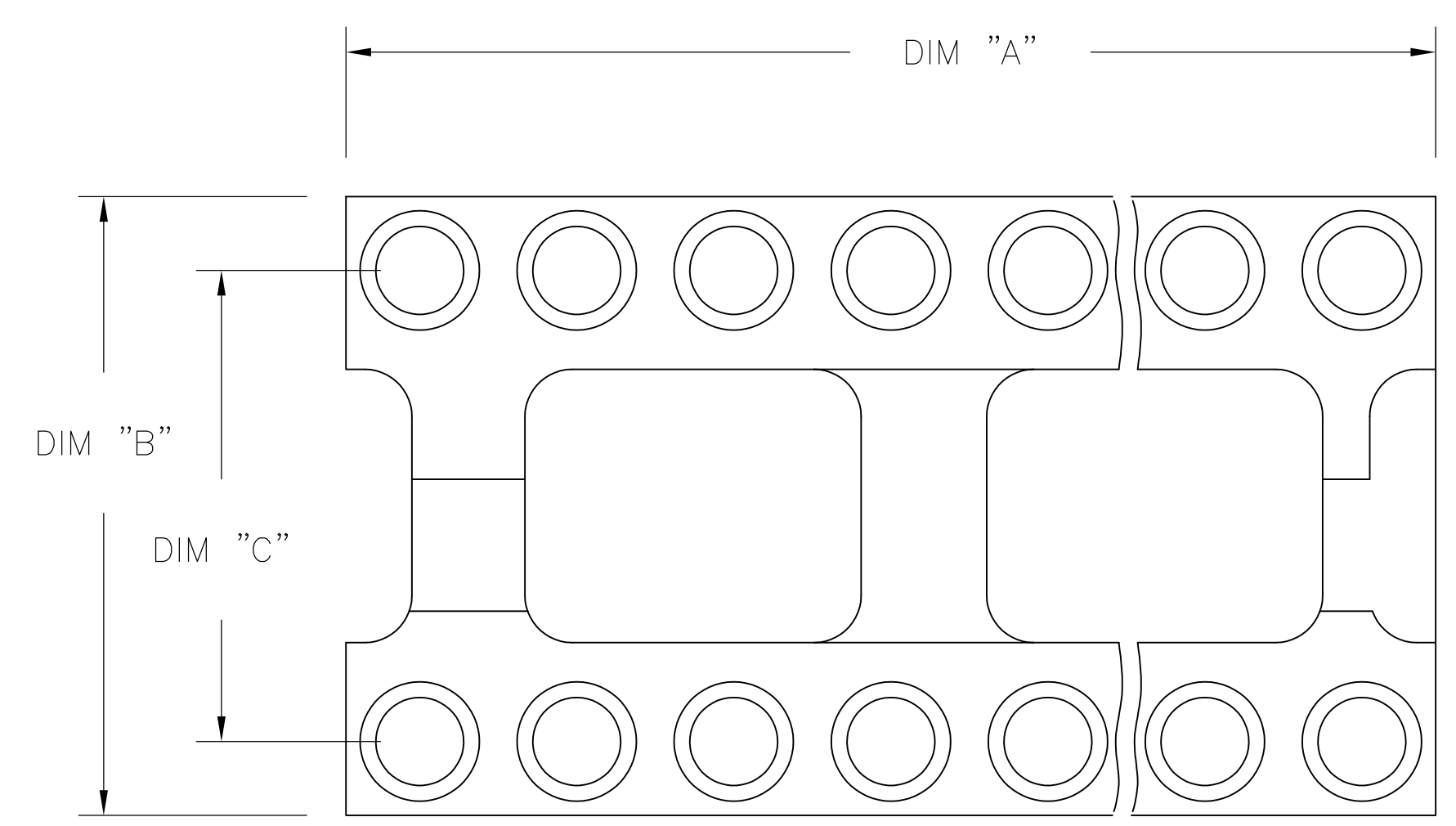


FIG. 2

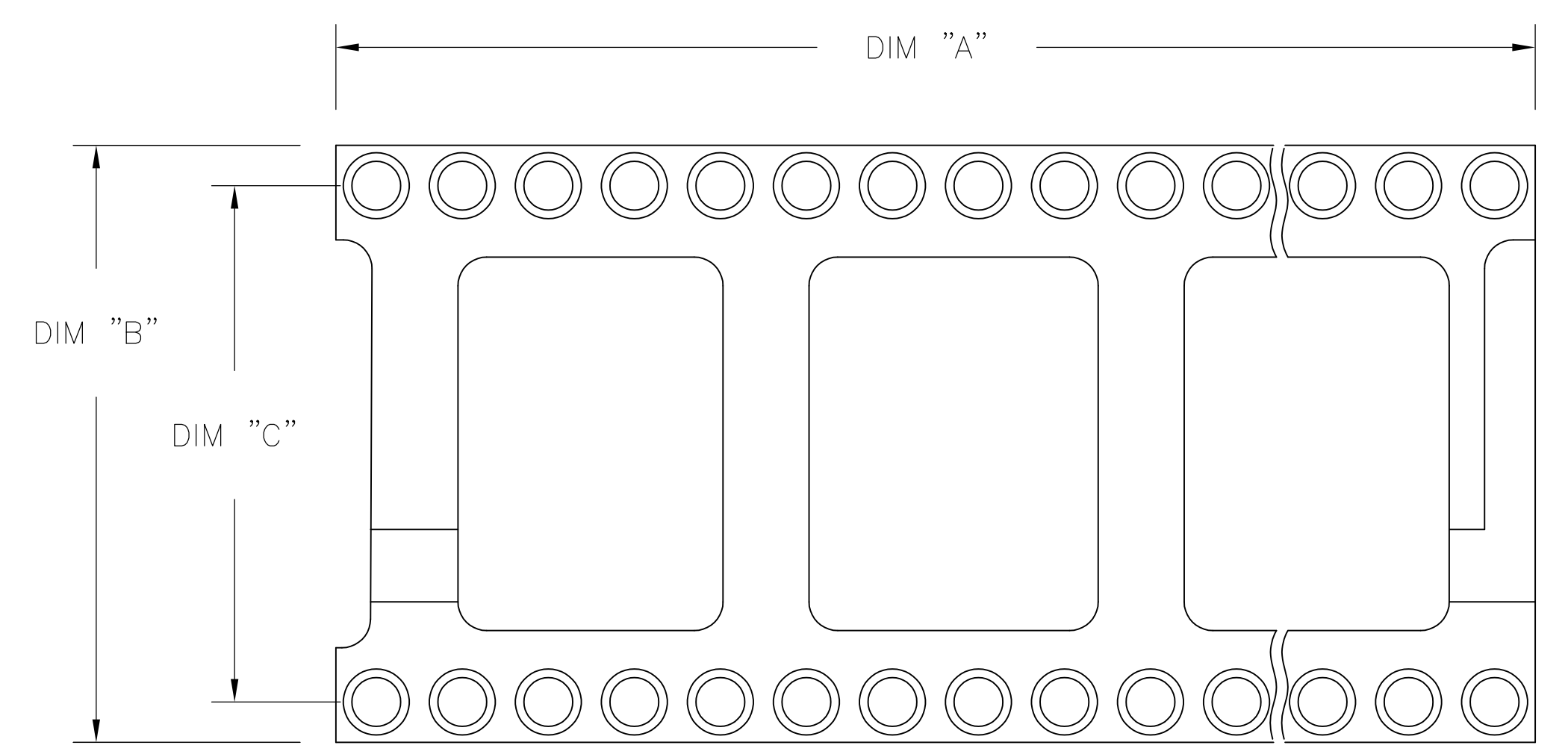
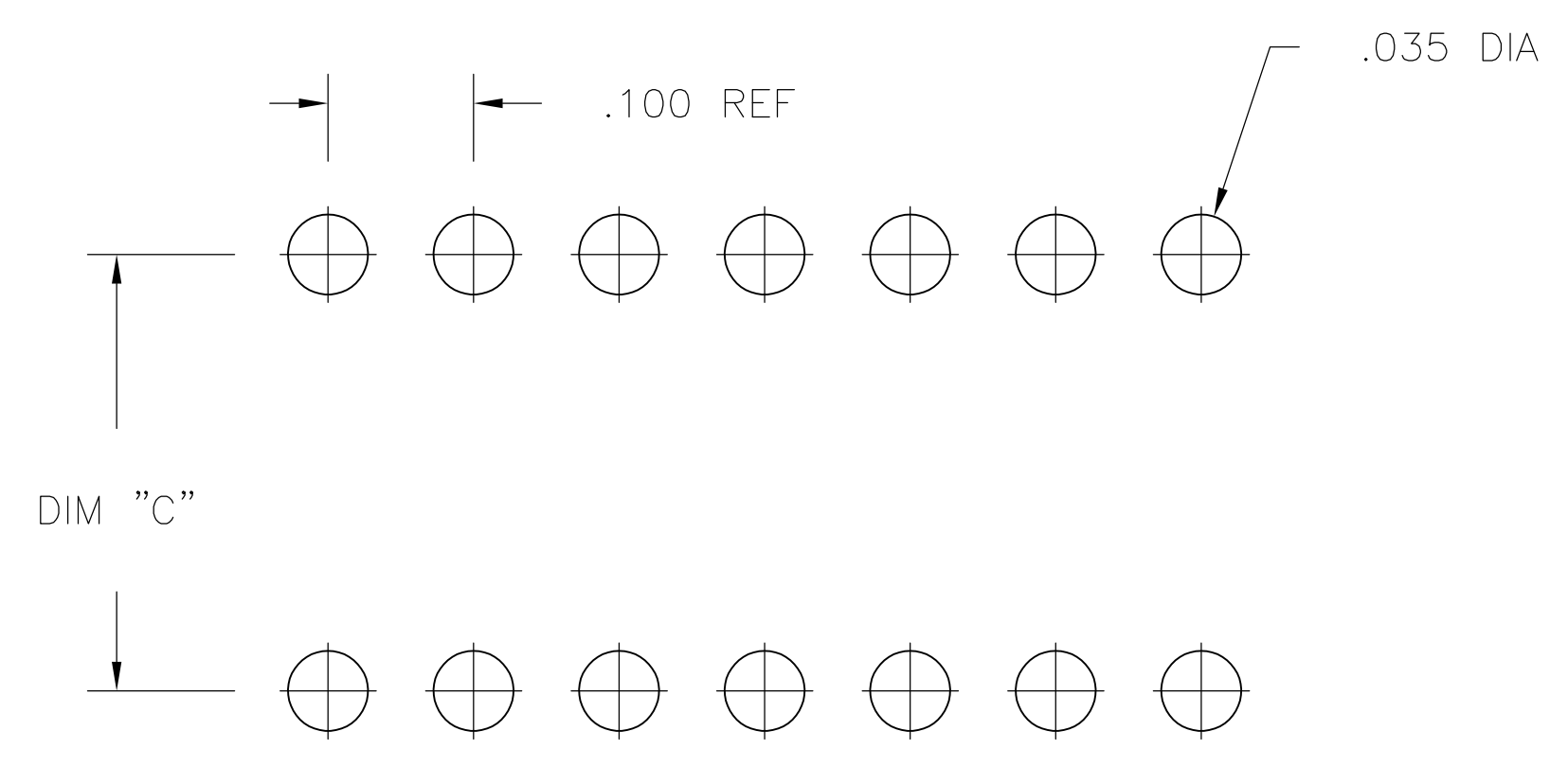
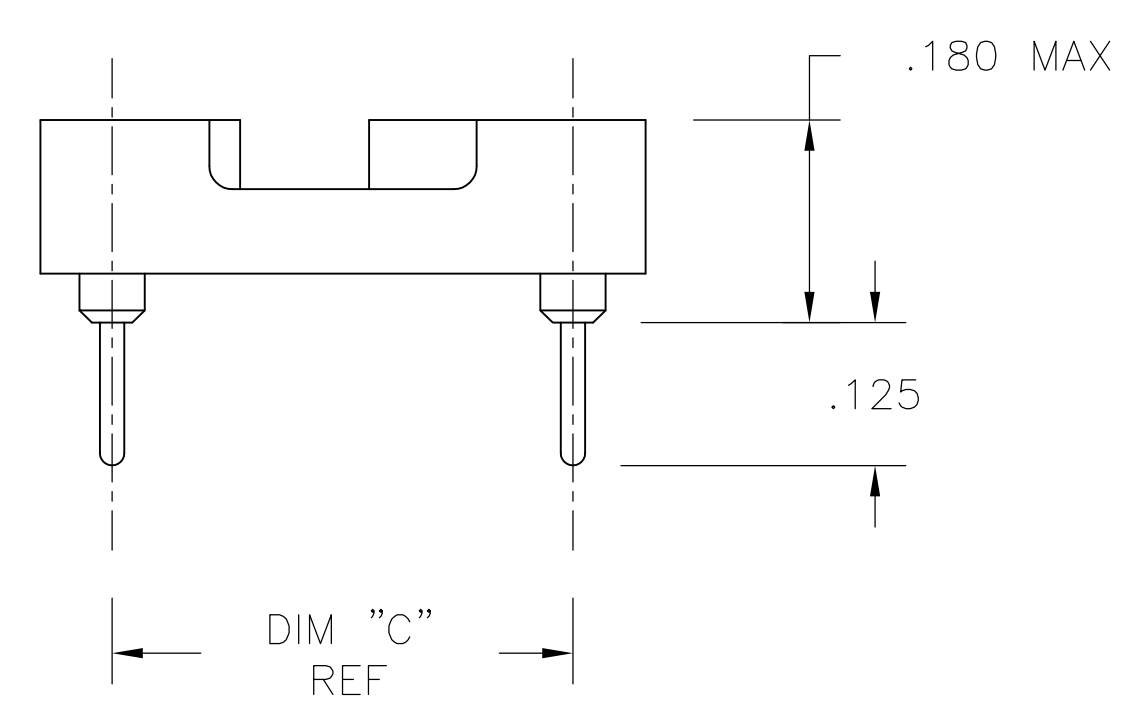
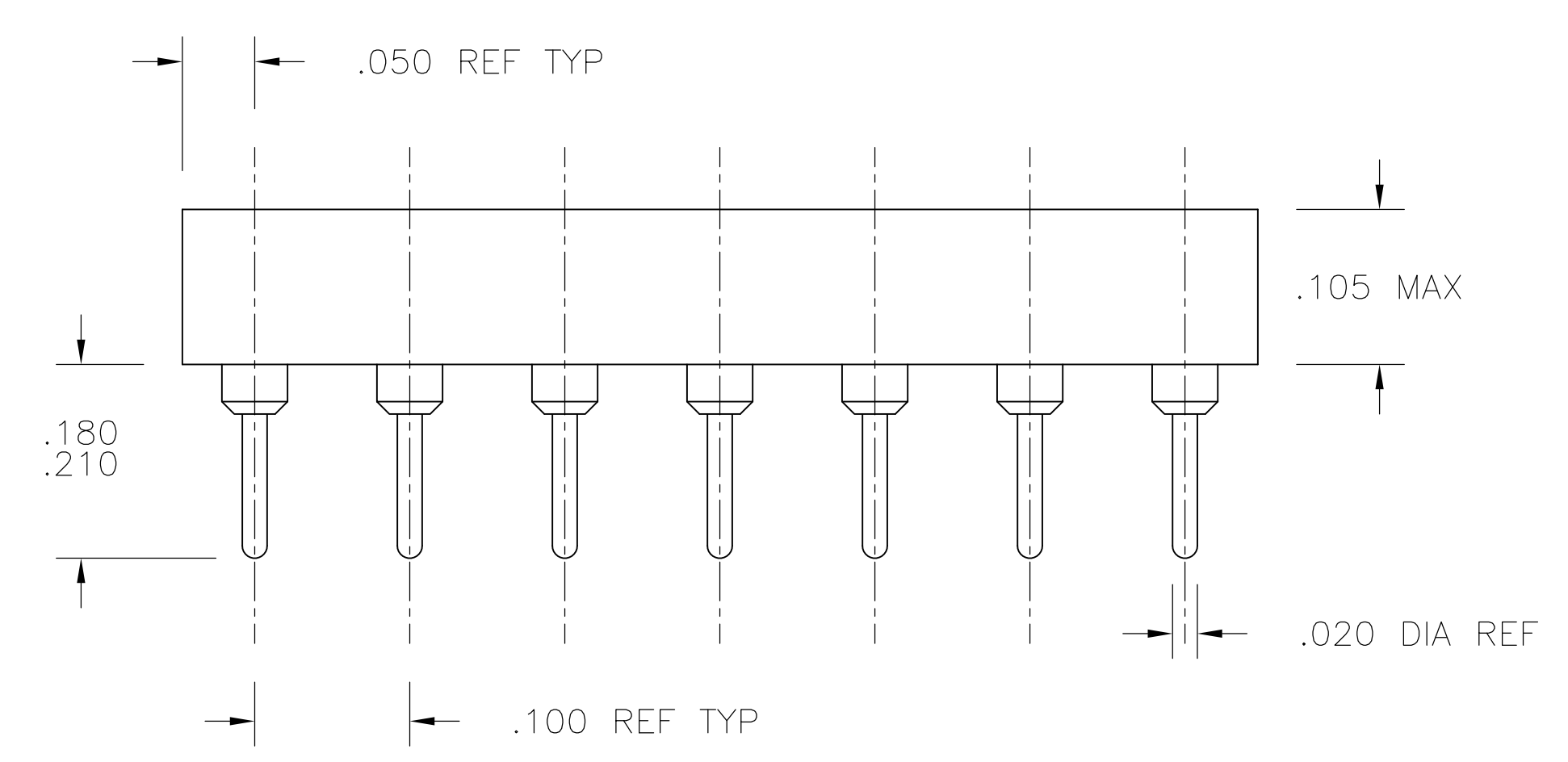


FIG. 3



1. INSULATOR MATERIAL - THERMOPLASTIC POLYESTER, PCT, BLACK, UL94 V-0
2. STAMPED CONTACT - BECU, PLATED WITH 80-200μ" TIN (LEAD FREE) OVER 75-100μ" COPPER.
3. SLEEVE - COPPER, PLATED WITH 180-340μ" THK TIN (LEAD FREE) OVER 75-125μ" MIN NICKEL.
5. STAMPED CONTACT-BECU, PLATED WITH GOLD FLASH OVER 50-100μ" NICKEL
6. STAMPED CONTACT-BECU, PLATED WITH 20μ" MIN GOLD OVER 30-100μ" NICKEL.
7. ELECTRICAL:
 - CONTACT RESISTANCE: 10 MILLIOHMS MAX
 - CONTACT RATING: 3 AMPS
 - CAPACITANCE: 1.0 pF PER MIL-STD-202, METHOD 305
 - INSULATION RESISTANCE: 5000 OHMS MIN @ 500 VDC PER MIL-STD-1344, METHOD 3003.1
 - DIELECTRIC WITHSTANDING VOLTAGE: 1000 VOLTS (RMS) PER MIL-STD-1344, METHOD 3001.1
8. MECHANICAL:
 - INSERTION FORCE: 179 GRAMS AVG
 - WITHDRAWAL FORCE: 63 GRAMS AVG
 - "ACCEPTS IC PIN - .009"X.015" THROUGH .011"X.020", OR .016" TO .021" DIAMETER, .150/.105 LONG"
9. ENVIRONMENTAL:
 - OPERATING TEMPERATURE: -55°C TO +105°C
10. OBSOLETE PARTS: OBSOLETE CIS STREAMLINING PER D.RENAUD/D.SINISI

P.C.B. HOLE LAYOUT
TOLERANCE ±.003

THIS DRAWING IS A CONTROLLED DOCUMENT.		DIN: BSV	27JUL04	TE Connectivity																		
DIMENSIONS: INCHES		TOLERANCES UNLESS OTHERWISE SPECIFIED:																				
<table border="1"> <tr><td>0. PLC</td><td>±</td><td>-</td></tr> <tr><td>1. PLC</td><td>±</td><td>-</td></tr> <tr><td>2. PLC</td><td>±</td><td>-</td></tr> <tr><td>3. PLC</td><td>±</td><td>.005</td></tr> <tr><td>4. PLC</td><td>±</td><td>-</td></tr> <tr><td>ANGLES</td><td>±</td><td>-</td></tr> </table>		0. PLC	±	-	1. PLC	±	-	2. PLC	±	-	3. PLC	±	.005	4. PLC	±	-	ANGLES	±	-	APVD: K. WRIGHT		NAME: OPEN FRAME DIP, ECONOMY (STAMPED CONTACT) (REF AUGAT 800 SERIES)
0. PLC	±	-																				
1. PLC	±	-																				
2. PLC	±	-																				
3. PLC	±	.005																				
4. PLC	±	-																				
ANGLES	±	-																				
MATERIAL: SEE NOTES		FINISH: SEE NOTES		APPLICATION SPEC: -	RESTRICTED TO: -																	
WEIGHT: -		SIZE: A1		CAGE CODE: 00779	DRAWING NO: 1571552																	
CUSTOMER DRAWING		SCALE: 4:1		SHEET: 1 OF 2	REV: E4																	

△3△6△10	OBSOLETE	GOLD	TIN	.400±.005	.500	1.200	2	24	5-1571552-7
△3△6		GOLD	TIN	.300±.005	.400	1.200	2	24	5-1571552-6
△3△6		GOLD	TIN	.900±.005	1.000	3.200	3	64	5-1571552-5
△3△6		GOLD	TIN	.600±.005	.700	2.400	3	48	5-1571552-4
△3△6		GOLD	TIN	.600±.005	.700	2.100	3	42	5-1571552-3
△3△6		GOLD	TIN	.600±.005	.700	2.000	3	40	5-1571552-2
△3△6		GOLD	TIN	.600±.005	.700	1.800	3	36	5-1571552-1
△3△6		GOLD	TIN	.600±.005	.700	1.600	3	32	5-1571552-0
△3△6		GOLD	TIN	.600±.005	.700	1.400	2	28	4-1571552-9
△3△6		GOLD	TIN	.600±.005	.700	1.200	2	24	4-1571552-8
△3△6		GOLD	TIN	.400±.005	.500	1.100	2	22	4-1571552-7
△3△6		GOLD	TIN	.300±.005	.400	1.000	2	20	4-1571552-6
△3△6		GOLD	TIN	.300±.005	.400	.900	2	18	4-1571552-5
△3△6		GOLD	TIN	.300±.005	.400	.800	2	16	4-1571552-4
△3△6		GOLD	TIN	.300±.005	.400	.400	1	8	4-1571552-3
△3△6		GOLD	TIN	.300±.005	.400	.700	2	14	4-1571552-2
△3△5△10	OBSOLETE	G F	TIN	.400±.005	.500	1.200	2	24	3-1571552-7
△3△5		G F	TIN	.300±.005	.400	1.200	2	24	3-1571552-6
△3△5		G F	TIN	.900±.005	1.000	3.200	3	64	3-1571552-5
△3△5		G F	TIN	.600±.005	.700	2.400	3	48	3-1571552-4
△3△5		G F	TIN	.600±.005	.700	2.100	3	42	3-1571552-3
△3△5		G F	TIN	.600±.005	.700	2.000	3	40	3-1571552-2
△3△5		G F	TIN	.600±.005	.700	1.800	3	36	3-1571552-1
△3△5		G F	TIN	.600±.005	.700	1.600	3	32	3-1571552-0
△3△5		G F	TIN	.600±.005	.700	1.400	2	28	2-1571552-9
△3△5		G F	TIN	.600±.005	.700	1.200	2	24	2-1571552-8
△3△5		G F	TIN	.400±.005	.500	1.100	2	22	2-1571552-7
△3△5		G F	TIN	.300±.005	.400	1.000	2	20	2-1571552-6
△3△5		G F	TIN	.300±.005	.400	.900	2	18	2-1571552-5
△3△5		G F	TIN	.300±.005	.400	.800	2	16	2-1571552-4
△3△5		G F	TIN	.300±.005	.400	.700	2	14	2-1571552-3
△3△5		G F	TIN	.300±.005	.400	.400	1	8	2-1571552-2
△3△2		TIN	TIN	.400±.005	.500	1.200	2	24	1-1571552-7
△3△2		TIN	TIN	.300±.005	.400	1.200	2	24	1-1571552-6
△3△2△10	OBSOLETE	TIN	TIN	.900±.005	1.000	3.200	3	64	1-1571552-5
△3△2△10	OBSOLETE	TIN	TIN	.600±.005	.700	2.400	3	48	1-1571552-4
△3△2△10	OBSOLETE	TIN	TIN	.600±.005	.700	2.100	3	42	1-1571552-3
△3△2		TIN	TIN	.600±.005	.700	2.000	3	40	1-1571552-2
△3△2△10	OBSOLETE	TIN	TIN	.600±.005	.700	1.800	3	36	1-1571552-1
△3△2		TIN	TIN	.600±.005	.700	1.600	3	32	1-1571552-0
△3△2		TIN	TIN	.600±.005	.700	1.400	2	28	1571552-9
△3△2		TIN	TIN	.600±.005	.700	1.200	2	24	1571552-8
△3△2△10	OBSOLETE	TIN	TIN	.400±.005	.500	1.100	2	22	1571552-7
△3△2		TIN	TIN	.300±.005	.400	1.000	2	20	1571552-6
△3△2		TIN	TIN	.300±.005	.400	.900	2	18	1571552-5
△3△2		TIN	TIN	.300±.005	.400	.800	2	16	1571552-4
△3△2		TIN	TIN	.300±.005	.400	.700	2	14	1571552-3
△3△2		TIN	TIN	.300±.005	.400	.400	1	8	1571552-2

FINISH CONTACT/ SLEEVE	"C" MAX	"B" MAX	"A" MAX	FIG	NO. OF POSN	PART NO.
---------------------------	------------	------------	------------	-----	-------------------	----------

THIS DRAWING IS A CONTROLLED DOCUMENT. DWN: BSV 27JUL04
 DIMENSIONS: INCHES TOLERANCES UNLESS OTHERWISE SPECIFIED:
 0. PLC ± -
 1. PLC ± -
 2. PLC ± -
 3. PLC ± .005
 4. PLC ± -
 ANGLES ± -
 FINISH SEE SHEET 1
 MATERIAL SEE SHEET 1
 WEIGHT -
 CUSTOMER DRAWING

APPROVED: K. WRIGHT
 PRODUCT SPEC
 APPLICATION SPEC
 SIZE: A1
 DWG NO: 00779
 DRAWING NO: 1571552
 SCALE: 1:1
 SHEET: 2 OF 2
 REV: E4

TE TE Connectivity
 NAME: OPEN FRAME DIP, ECONOMY (STAMPED CONTACT)
 (REF AUGAT 800 SERIES)