

A

B

22-24 AWG IDC WIRE TO BOARD CONNECTOR SINGLE CONTACT - CONTACT OPTIONS



**RoHS
COMPLIANT**

Elco Europe (A Division of AVX Ltd) CONFIDENTIAL PROPRIETY
The document on this print and information therewith are PROPRIETY
to Elco Europe (A Division of AVX Ltd) and shall not be copied
or disclosed in whole or in part without Elco Europe's written consent.

70-9176-001-4XX-006

PREFIX

CODE	DESCRIPTION
70	CONTACT

SERIES

NO. OF WAYS

CODE	NO. OF WAYS
001	1

WIRE GAUGE SIZE

CODE	ACCEPTED WIRE GAUGE
422	22 GAUGE STRANDED
432	24 GAUGE STRANDED
443	26/28 GAUGE STRANDED

PLATING OPTION

CODE	DESCRIPTION
006	PURE TIN ALL OVER



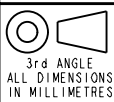
REFER TO DRAWING 60-9176-001-4XX-X00S FOR CAP OPTIONS WHEN REQUIRED.

FORM-106-01-036-6 ISS 7

ELCO EUROPE (A DIVISION OF AVX LTD.) CONFIDENTIAL PROPRIETY
THE DRAWING ON THIS PRINT AND INFORMATION THEREWITH ARE
PROPRIETARY TO ELCO EUROPE (A DIVISION OF AVX LTD.) AND
SHALL NOT BE USED OR DISCLOSED IN WHOLE OR IN PART
WITHOUT ELCO EUROPE'S WRITTEN CONSENT.

CONTACT ORDERING CODE
SHEET 1 OF 5

Release No.	102646
History	102749
	28.02.2011
	102801
	14.09.2011
	102816
	21.10.2011



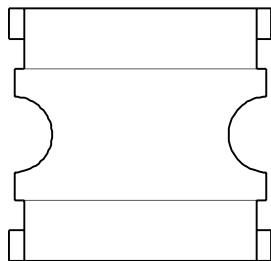
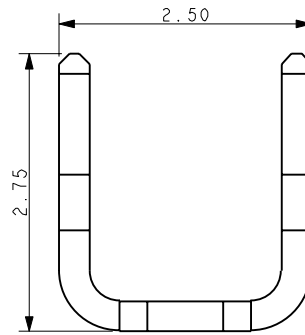
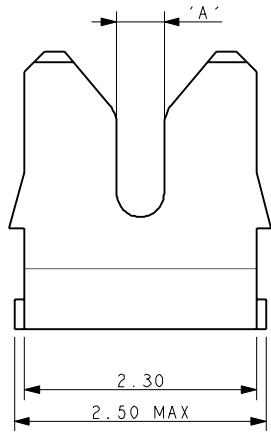
ELCO
© COPYRIGHT ELCO EUROPE
NOT TO BE DISCLOSED OR COPIED
WITHOUT WRITTEN PERMISSION

Drawn	N.C.H.	Description	CONTACT - IDC WIRE TO BOARD CONNECTOR	DATE	10-May-07
Size	CV	Part Number	70-9176-001-4XX-006S	Issue	4

A

B

CONTACT DETAILS

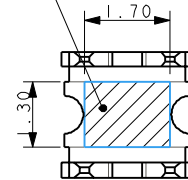


CODE SHEET	ACCEPTED WIRE GAUGE	'A'
422	22 GAUGE STRANDED	0.47
432	24 GAUGE STRANDED	0.37
443	26/28 GAUGE STRANDED	0.20

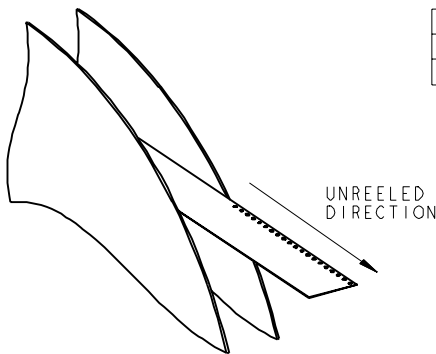
NOTES:-

- CONNECTOR FOR IDC WIRE TO BOARD CONNECTION.
- CONTACT MATERIAL :- PHOSPHORE BRONZE.
- CONTACT PLATING :- PURE TIN.
- CONTACTS DESIGNED TO ACCEPT BETWEEN 22 AND 28 GAUGE STRANDED WIRE, SEE TABLE.
- ALL DIMENSIONS ± 0.20 UNLESS TOLERANCED.
- FOR FULL PRODUCT SPECIFICATION REFER TO ELCO SPEC 201-01-126 AND APPLICATION NOTES 201-01-124.
- SMT PCB LAYOUT, REFER TO SHEET 3.
- PACKING IN TAPE AND REEL, QUANTITY 2000 PER REEL.
- WHEN REQUIRED, MATCHING CAP DETAILS ON DRAWING 60-9176-001-4XX-X06S.
- ASSEMBLY TOOLING ON SHEET 4 FOR WIRE INTO CONTACT.

AREA AVAILABLE FOR PICK & PLACE

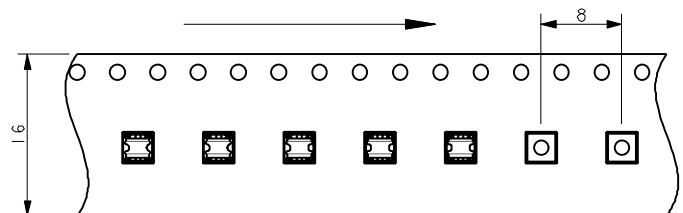


PACKING DETAILS



REEL QTY	2000
LEADER	480mm
TRAILER	120mm

Elco Europe (A Division of AVX Ltd) CONFIDENTIAL PROPRIETY
The document on this print and information therewith are PROPRIETY to Elco Europe (A Division of AVX Ltd) and shall not be copied or disclosed in whole or in part without Elco Europe's written consent.

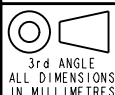


ELCO EUROPE (A DIVISION OF AVX LTD.) CONFIDENTIAL PROPRIETY
THE DRAWING ON THIS PRINT AND INFORMATION THEREWITH ARE PROPRIETY TO ELCO EUROPE (A DIVISION OF AVX LTD.) AND SHALL NOT BE USED OR DISCLOSED IN WHOLE OR IN PART WITHOUT ELCO EUROPE'S WRITTEN CONSENT.

CONTACT DETAILS

SHEET 2 OF 5

Release No.	102646
History	102749
	28.02.2011
	102801
	14.09.2011
	102816
	21.10.2011



ELCO
© COPYRIGHT ELCO EUROPE
NOT TO BE DISCLOSED OR COPIED
WITHOUT WRITTEN PERMISSION

Drawn	N.C.H.	Description	CONTACT - IDC WIRE TO BOARD CONNECTOR	DATE	10-May-07
Size	CV	Part Number	70-9176-001-4XX-006S	Issue	4

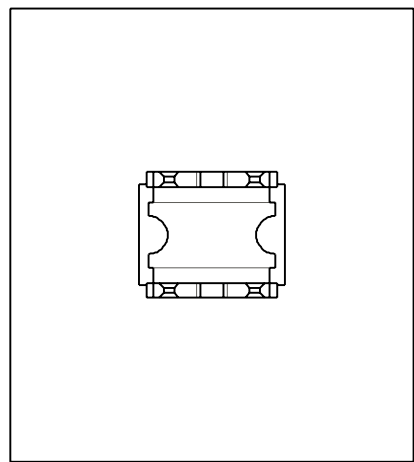
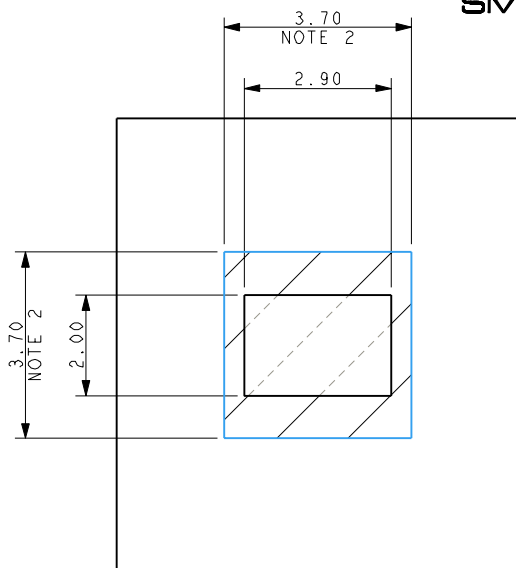
A

B

22-24 AWG IDC WIRE TO BOARD CONNECTOR SINGLE CONTACT

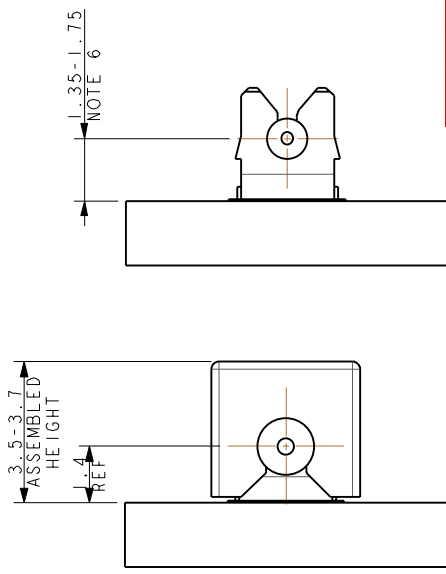


SMT PCB LAYOUT PURE TIN PADS

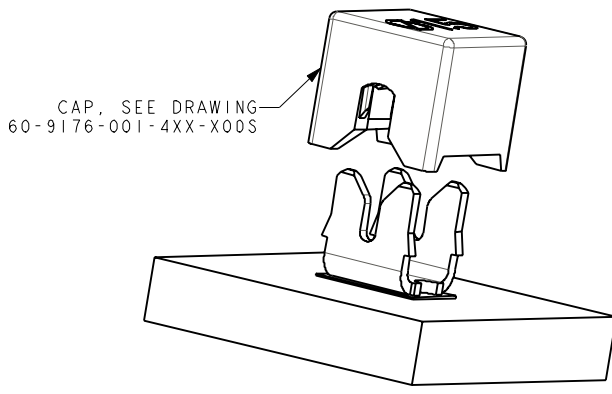


ORIENTATION OF CONTACT ON PAD.

ASSEMBLED/INSTALLED PRODUCT



Elco Europe (A Division of AVX Ltd) CONFIDENTIAL PROPRIETY
The document on this print and information therewith are PROPRIETY
to Elco Europe (A Division of AVX Ltd) and shall not be copied
or disclosed in whole or in part without Elco Europe's written consent.

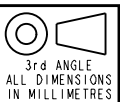


- NOTES :-
1. CONNECTOR CAN BE USED WITH CONTACT ONLY OR WITH OPTIONAL CAP.
 2. OUTLINE OF CAP WHERE USED.
 3. FOR FULL PRODUCT SPECIFICATION REFER TO ELCO SPEC. 201-01-126 AND APPLICATION NOTES 201-01-124.
 4. ALL DIMENSIONS ± 0.20 UNLESS TOLERANCED.
 5. ASSEMBLY TOOLING FOR WIRE INTO CONTACT, SEE SHEET 4.
 6. WIRE CENTRE LINE HEIGHT ABOVE THE PCB, THIS INCLUDES AN ALLOWANCE OF 0.10mm FOR SOLDER AND 0.035mm FOR PAD THICKNESS. NO ALLOWANCE HAS BEEN MADE FOR SOLDER RESIST OR OTHER FEATURES.

FORM-106-01-056-6 ISS 7

ELCO EUROPE (A DIVISION OF AVX LTD.) CONFIDENTIAL PROPRIETY
THE DRAWING ON THIS PRINT AND INFORMATION THEREWITH ARE
PROPRIETARY TO ELCO EUROPE (A DIVISION OF AVX LTD.) AND
SHALL NOT BE USED OR DISCLOSED IN WHOLE OR IN PART
WITHOUT ELCO EUROPE'S WRITTEN CONSENT.

Release No.	102646
History	102749
	28.02.2011
	102801
	14.09.2011
	102816
	21.10.2011



Drawn	N.C.H.	Description	CONTACT - IDC WIRE TO BOARD CONNECTOR	DATE	29-Jul-09
Size	CV	Part Number	70-9176-001-4XX-006S	Issue	4

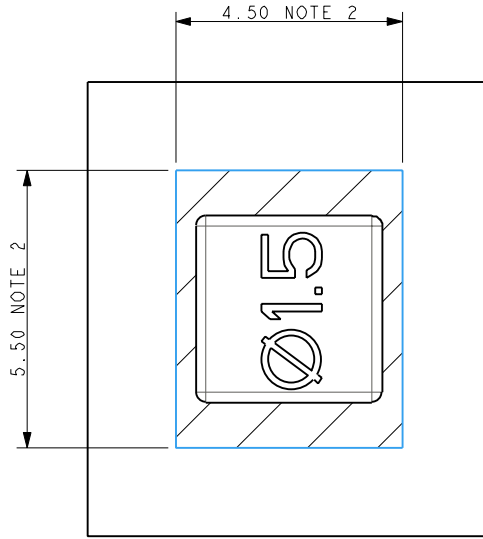
ASSEMBLY DETAILS
SHEET 3 OF 5

A

B



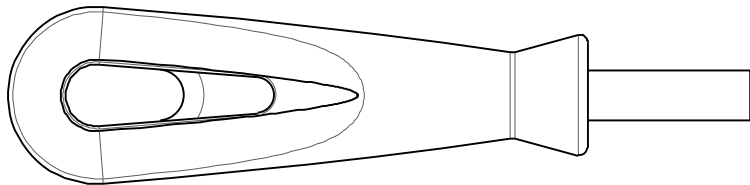
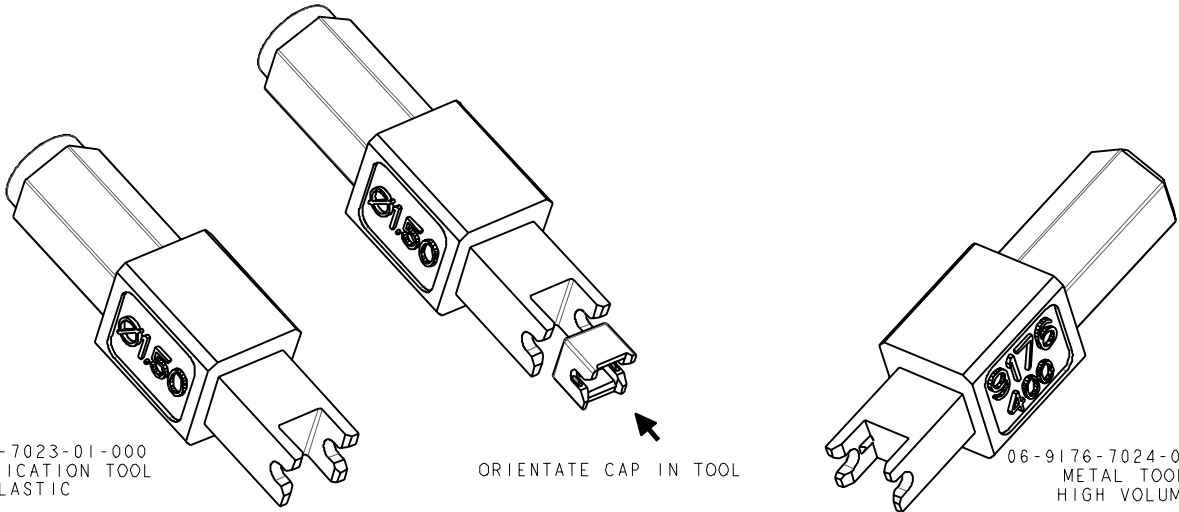
ASSEMBLY TOOLING - CAP USED



Elco Europe (A Division of AVX Ltd) CONFIDENTIAL PROPRIETY
The document on this print and information therewith are PROPRIETY
to Elco Europe (A Division of AVX Ltd) and shall not be copied
or disclosed in whole or in part without Elco Europe's written consent.

NOTES :-

1. ASSEMBLY TOOLING FOR CAP.
2. MINIMUM AREA OF PCB TO BE KEPT CLEAR OF COMPONENTS, TRACKS PERMISSIBLE.
3. WIRE AND CAP INSERTED IN ONE OPERATION.
4. REFER TO APPLICATION NOTE 201-01-124 FOR FURTHER INFORMATION.
5. REFER TO SHEET 5 FOR ASSEMBLY WITHOUT CAP.



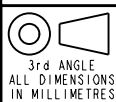
06-7000-7730-01-000
UNIVERSAL HANDLE

ELCO EUROPE (A DIVISION OF AVX LTD.) CONFIDENTIAL PROPRIETY
THE DRAWING ON THIS PRINT AND INFORMATION THEREWITH ARE
PROPRIETARY TO ELCO EUROPE (A DIVISION OF AVX LTD.) AND
SHALL NOT BE USED OR DISCLOSED IN WHOLE OR IN PART
WITHOUT ELCO EUROPE'S WRITTEN CONSENT.

ASSEMBLY DETAILS

SHEET 4 OF 5

Release No.	
History	
102749	28.02.2011
102801	14.09.2011
102816	21.10.2011



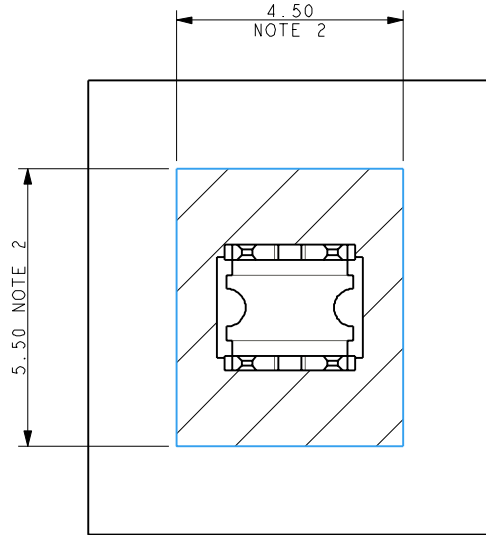
Drawn	N.C.H.	Description	CONTACT - IDC WIRE TO BOARD CONNECTOR	DATE	28-Feb-11
Size	CV	Part Number	70-9176-001-4XX-006S	Issue	4

FORM-106-01-036-6 ISS 7

A

B

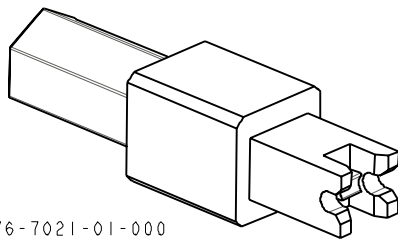
**ASSEMBLY TOOLING - CAP NOT USED
WIRE ONTO CONTACT**



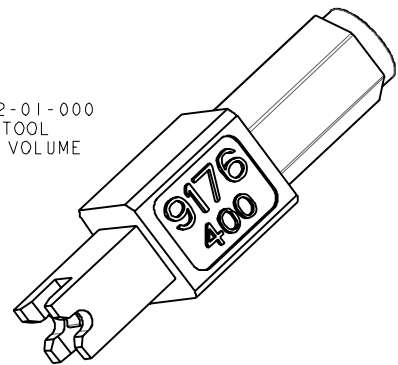
Elco Europe (A Division of AVX Ltd) CONFIDENTIAL PROPRIETY
The document on this print and information therewith are PROPRIETY
to Elco Europe (A Division of AVX Ltd) and shall not be copied
or disclosed in whole or in part without Elco Europe's written consent.

NOTES :-

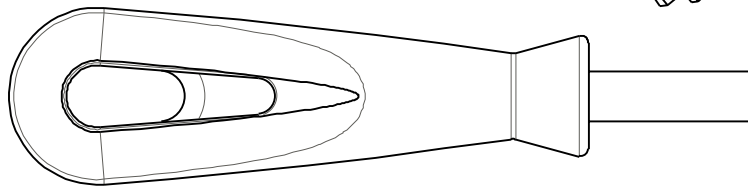
1. ASSEMBLY TOOLING FOR CONTACT ONLY, NO CAP USED.
2. MINIMUM AREA OF PCB TO BE KEPT CLEAR OF COMPONENTS, TRACKS PERMISSIBLE.
3. REFER TO APPLICATION NOTE 201-01-124 FOR FURTHER INFORMATION.
4. INSERT CORRECT TOOL INTO HANDLE, MAGNETIC RETENTION.
5. REFER TO SHEET FOR FOR ASSEMBLY WITH CAP.



06-9176-7021-01-000
METAL TOOL
HIGH VOLUME



06-9176-7022-01-000
PLASTIC TOOL
LOW/MEDIUM VOLUME



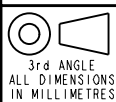
06-7000-7730-01-000
UNIVERSAL HANDLE

FORM-106-01-036-6 ISS 7

ELCO EUROPE (A DIVISION OF AVX LTD.) CONFIDENTIAL PROPRIETY
 THE DRAWING ON THIS PRINT AND INFORMATION THEREWITH ARE
 PROPRIETARY TO ELCO EUROPE (A DIVISION OF AVX LTD.) AND
 SHALL NOT BE USED OR DISCLOSED IN WHOLE OR IN PART
 WITHOUT ELCO EUROPE'S WRITTEN CONSENT.

ASSEMBLY DETAILS
 SHEET 5 OF 5

Release No.	102646
History	102749
	28.02.2011
	102801
	14.09.2011
	102816
	21.10.2011



ELCO
 © COPYRIGHT ELCO EUROPE
 NOT TO BE DISCLOSED OR COPIED
 WITHOUT WRITTEN PERMISSION

Drawn	N.C.H.	Description	CONTACT - IDC WIRE TO BOARD CONNECTOR	DATE	29-Jul-09
Size	CV	Part Number	70-9176-001-4XX-006S	Issue	4

A

B