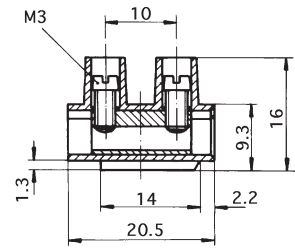
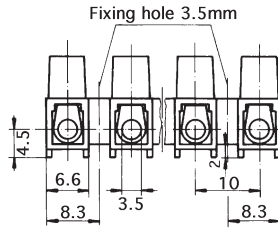
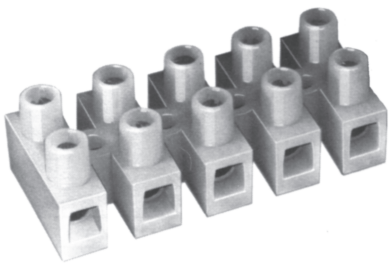


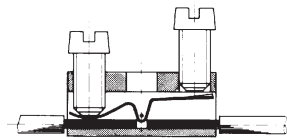
# Terminal blocks - strip type

## SERIES 500

### 10A terminal blocks - standard base



TYPE MDS



Length = number of poles x 10 less 3.4mm

### FEATURES

**Series 500** terminal blocks are available in 3 grades of housing material, nylon 6, nylon 6.6 (H type) and nylon 6.6 (T type) which is suitable for high temperature applications. Two variations of wire protectors are offered, type HDS have standard protectors and type MDS have barrier protectors. Versions without wire protectors are also offered with barriers in inserts (type SL). Captive screws are fitted as standard.

Approvals											
Nominal Cross-Section mm <sup>2</sup>	2.5	22-10 AWG	24-12 AWG	2.5	2.5	2.5	2.5	2.5	2.5	2.5	2.5
		30A	25A								
Voltage Rating	V	450	150/250 500 KUS for 600v	300	400	400	400	400	400	400	400

### TECHNICAL DETAILS

<b>Mouldings:</b>	nylon 6, natural, UL94 V2 nylon 6.6, natural, UL94 V2 (H) nylon 6.6, brown, UL94 V0 (T)
<b>Inserts:</b>	brass, tinned
<b>Screws:</b>	M3 steel, zinc plated, chromed
<b>Screw tightening torque:</b>	max: 0.5 Nm
<b>Maximum working temp:</b>	nylon 6: 100° C nylon 6.6 (H type): 100° C nylon 6.6 (T type): 160° C
<b>Current rating:</b>	to EN 60 598: 16A to EN 60 998: 24A
<b>Voltage rating:</b>	see approvals
<b>Conductor size:</b>	without wire protectors: 6.0mm <sup>2</sup> with wire protectors: 2.5mm <sup>2</sup>
<b>Wire stripping length:</b>	7mm - 7.5mm

### OPTIONS

**Marking:** special printing available. Please provide sketch.  
**Cut lengths:** standard 12 pole lengths can be cut to shorter lengths.  
**Covers:** series **ABK405** - see page 63.

