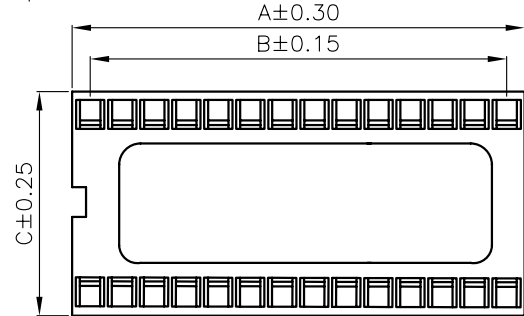
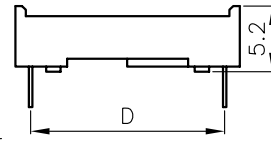
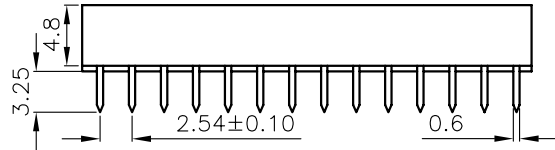
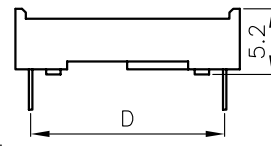
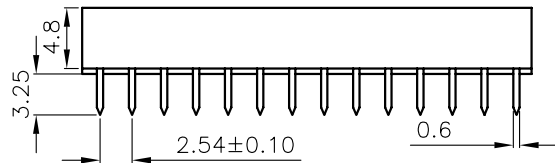


Note1: With middle bar(18-64P)



Note2: W/O middle bar(6-16P)



Circuits	DIM.A	DIM.B	DIM.C	DIM.D	Spacing
6	7.62	5.08	10.16	7.62	03
8	10.16	7.62	10.16	7.62	
14	17.78	15.24	10.16	7.62	
16	20.32	17.78	10.16	7.62	
18	22.86	20.32	10.16	7.62	04
20	25.40	22.86	10.16	7.62	
24	30.48	27.94	10.16	7.62	
28	35.56	33.02	10.16	7.62	
22	27.94	25.40	12.70	10.16	06
24	30.48	27.94	17.78	15.24	
28	35.56	33.02	17.78	15.24	
32	40.64	38.10	17.78	15.24	
40	50.80	48.26	17.78	15.24	
42	53.34	50.80	17.78	15.24	
48	60.96	58.42	17.78	15.24	

Specifications:

Current rating:1.0A AC/DC

Voltage rating:100V AC/DC

Contact resistance:10m ohm max

Insulator resistance:5000M ohm min

Withstanding voltage:1000V AC for one minute

Operating temperature range:-40°C to +105°C

Material and Finish

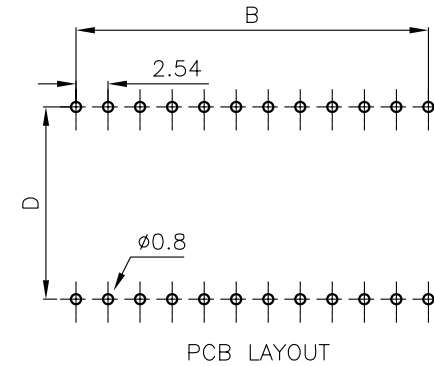
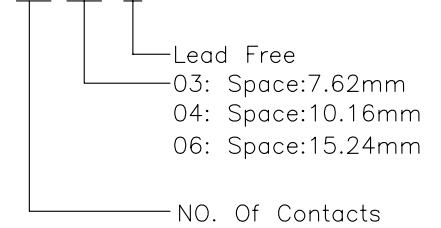
Insulator:High Temp. Plastic(UL94V-0)

Contact:Phosphor bronze


Finish:Tin Plated

How To Order

2227-XX-XX-F1



RoHS Compliant

E				DRAWN: Cel king	GENERAL TOLERANCE: .X=±0.2 .XX=±0.15	 繼德工業股份有限公司 Neltron Industrial Co., Ltd.	DESCRIPTION: 2.54mm IC Socket Stamp Pin	SIZE A4
D				CHECKED: Jeremy Liu				
C				APPROVAL: Mike Wu	UNIT: MM	PART NO: 2227-XX-XX-F1		
B					SCALE:			
A	19-Aug-2005	(PC0299)	Cel king		SHEET: 1 / 1			
REV	DATE	FILE	BY		PROJECTION: 