

PLEASE CHECK WWW.MOLEX.COM FOR LATEST PART INFORMATION

Part Number: [50-57-9209](#)
Status: **Active**
Overview: [SL™ Modular Connectors](#)
Description: 2.54mm Pitch SL™ Crimp Housing, Single Row, Version C, Front Ribs, 9 Circuits

Documents:

3D Model	Product Specification PS-71851 (PDF)
Drawing (PDF)	Test Summary TS-70058-001 (PDF)
Product Specification PS-70058 (PDF)	RoHS Certificate of Compliance (PDF)
Product Specification PS-70400 (PDF)	

Agency Certification

CSA	LR19980
TUV	R72081037
UL	E29179

General

Product Family	Crimp Housings
Series	70066
Application	Signal, Wire-to-Board
Comments	Version C
Overview	SL™ Modular Connectors
Product Name	SL™

Physical

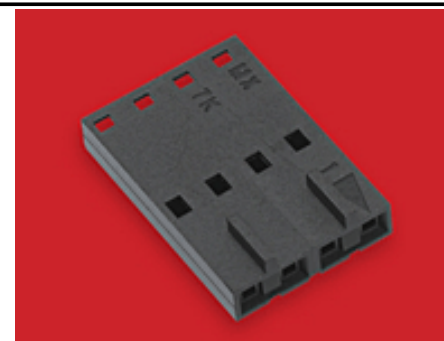
Circuits (maximum)	9
Color - Resin	Black
Flammability	94V-0
Gender	Female
Glow-Wire Compliant	No
Material - Resin	Polyester Alloy
Number of Rows	1
Packaging Type	Bag
Panel Mount	No
Pitch - Mating Interface	2.54mm
Stackable	No
Temperature Range - Operating	-40°C to +105°C

Material Info

Old Part Number	70066-0078
UPC	800753784710

Reference - Drawing Numbers

Product Specification	PS-70058, PS-70400, PS-71851
Sales Drawing	SD-70066-0071-0094
Test Summary	TS-70058-001



Series

image - Reference only

EU RoHS

**ELV and RoHS
Compliant**

REACH SVHC

**Contains SVHC: No
Low-Halogen Status
Not Reviewed**

China RoHS



**Need more information on product
environmental compliance?**

Email productcompliance@molex.com
 For a multiple part number RoHS Certificate of
 Compliance, [click here](#)

Please visit the [Contact Us](#) section for any
 non-product compliance questions.

Search Parts in this Series

[70066Series](#)

Mates With

[70544](#), [70546](#), [70554](#) , [70556](#), [70543](#), [70545](#)
 , [70553](#) , [70555](#)

Use With

[70058](#) , [71851](#)