

# CONTROL PRODUCTS

## Assembled Control Stations

- Robust ABS control stations housing push-buttons, E-Stops and selector switches.
- Rated 600V, 10A max AC
- Conform to IEC 947-5-1 & EN 60947-5-1
- Other button options available to order
- Other size enclosures available to order
- CE approved

SPECIFICATIONS		
Materials	ABS	
Protection Class	IP65	
Rated Temperature	Operating	-25° to +75°
	Storage	-40° to +80°
Standard Colours	Box & lid	Grey RAL 7035
	Lid	Yellow RAL 1103
<i>Contact Block and Switch</i>		
Rated Voltage	600V	
Rated AC Current	24V	10A
	240V	6A
	400V	4A
Rated DC Current	24V	2.8A
	125V	0.55A
	250V	0.27A
Short circuit protection	10A	
Impulse withstand	6kV	
Internal resistance	<25mΩ	
Wire acceptance	0.75-2.5mm <sup>2</sup>	
Body	Metal	Chromium plated
	Plastic	Fibreglass reinforced thermoplastic
Electrical Protection	Metal	Class I
	Plastic	Class II
Life	1x10 <sup>6</sup> operations	

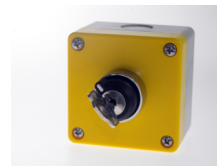
## E- stop Boxes Twist Release

TYPE NO.	SURROUND	STYLE	
CSC1-50	Plastic	Assembled E-Stop box, 40mm actuator 1NO & 1NC Contact. Twist release.	CSC1-50
CSC1-60	Plastic	Assembled E-Top box, 40mm actuator. 1NO & 1NC Contact. Key release.	
CSC1-100	Plastic	Assembled E-Top box, 60mm actuator. 1NO & 1NC Contact. Twist release	



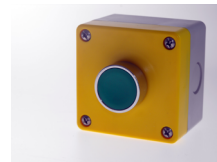
## Selector Switch Box

TYPE NO.	SURROUND	STYLE	
CSC1-70	Metal	Assembled key selector box. 1NO & 1NC.	CSC1-70



## Push Button Box

TYPE NO.	SURROUND	STYLE	
CSC1-10	Metal	Assembled 1-position box with 30mm green push button	CSC1-10
CSC2-10	Metal	Assembled 2-position box with 30mm green and red push buttons	



CSC2-10

