

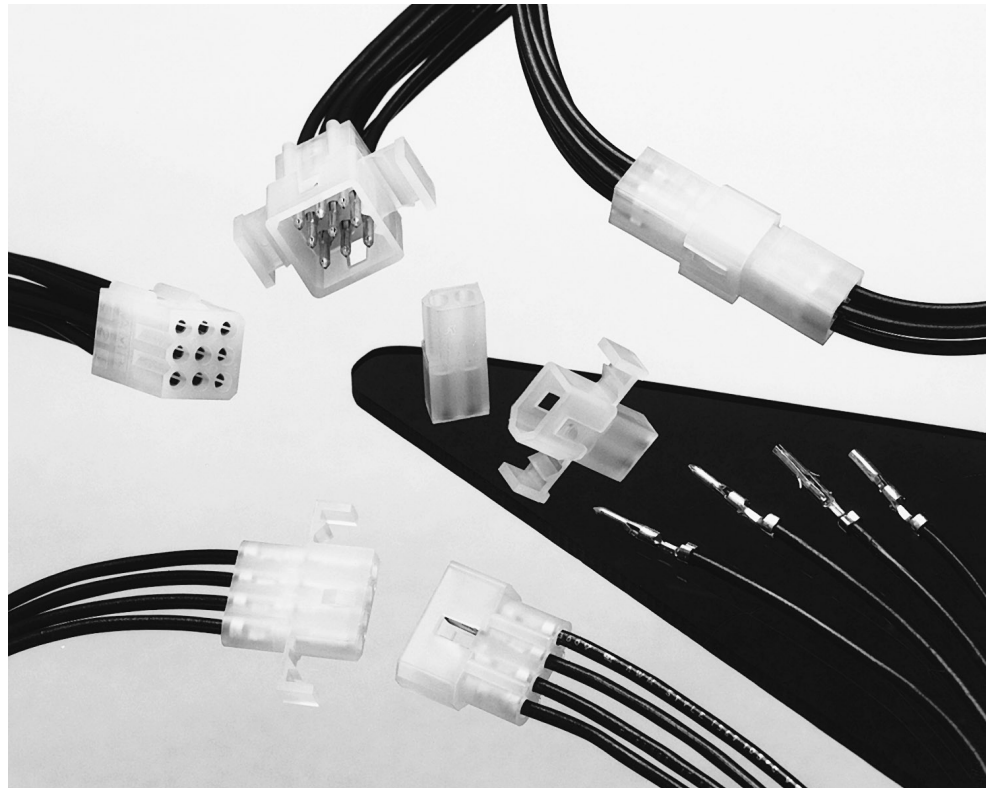


Product Facts

- Polarised
- Cavity identification
- Low contact-mating force
- Dual locking lances
- Detent and positive locking
- Contacts available in brass and phosphor bronze with tin and gold plating
- Panel-mounting and free-hanging styles
- “F” crimp contacts
- Applicator and hand tool available
- Economical commercial-grade connectors
- Compatible with high-speed application machinery and competitive soft shells
- Wire range from 30 to 18 AWG [0.05 to 0.9 mm²]
- Accepts wires with insulation diameters as large as .110 [2.79]
- Housings available in 1 to 9 positions
- .062 plug and receptacle housings accept pin or socket contacts. The preferred convention is to use socket contacts with receptacle housings
- Not for interrupting current
- Recognised under the Component Program of Underwriters Laboratories Inc.,  File No. E28476
- Certified by Canadian Standards Association,  File No. LR 7189



Performance Characteristics:

The .062 Commercial Pin and Socket Connectors performance characteristics found below are based on free hanging and panel mount connectors, loaded with contacts crimped on stranded wire.

Durability—10 mating cycles

Dielectric Withstanding Voltage—1.0 kVAC

Insulation Resistance—1000 megohms min. initial

Voltage Rating—250 V AC or DC

Connector Mating—2.5 lb. [11.1 N] max. per contact

Connector Unmating—0.3 lb. [1.3 N] min. per contact

Contact Insertion Force—4.0 lb. [17.8 N] max. per contact

Contact Retention—7 lb. [31.1 N] min.

15 lb. [66.6N] min. for contacts 770983-1 and 794380-1

Technical Documents:

Product Specification
108-1037

Application Specification
114-1013

Contacts

Product Specification:

Pin Diameter—.062 [1.57]

Material:

Stock Thickness—.008 [0.20]

Pin and socket contacts can be used in either plug or receptacle housings.

Related Product Data:

Performance Characteristics — page 9116

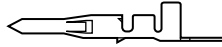
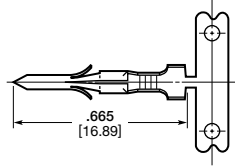
Housings — page 9118

Application Tooling — pages 9120, 9121 and 9123

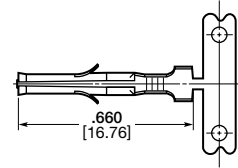
Technical Documents: pages 9116 and 9119

Product Specification 108-1037

Application Specification 114-1013



Pin



Socket

Wire Size		Ins. Dia.	Material & Finish	Contact Part Numbers				HDM Applicator Part Numbers	Hand Tool Part Numbers
AWG	mm ²			Pin		Socket			
				Strip Form	Loose Form	Strip Form	Loose Form		
30-24	0.05-0.2	.060 1.52 Max.	Brass Pre-tin	640391-1	794018-1	640392-1	794019-1	466686-1 ³ 466686-2 ³ 466686-3 ³	90870-1
			Brass, Select Gold ¹	640391-5 ¹	—	640392-5 ¹	—		
			Phos. Brz., Pre-tin	—	—	640392-2	—		
24-18	0.2-0.9	.050-.110 1.27-2.79	Brass Pre-tin	350629-1	794017-1	350628-1	794016-1	687996-1 ³ 687996-2 ³ 687996-3 ³	90869-1
			Phos. Brz., Pre-tin	770983-1 ⁴	—	794380-1 ⁴	794103-1 ²		
			Brass, Select Gold ¹	350629-5 ¹	—	350628-5 ¹	—		
			Phos. Brz., Select Gold ¹	—	—	350628-6 ¹	—		

¹ Select Gold—.000030 min. in mating area over .000050 nickel.

² Lanceless Socket for Overmoulding.

³ HDM Applicator part number ending in -1 is used on AMPOMATOR CLS Machine with T or G Terminators, -2 is used on AMP-O-LECTRIC Model K Machine, -3 is used on AMP-O-LECTRIC Model G Machine. See page 9123 for further information.

⁴ Contact Retention 15 lbs. min.

Note: Phosphor bronze contacts should be used in high-temperature/humidity cycling applications.



**Contact Insertion Tool
(for Pins and Sockets)**
Part Number 91002-1
IS 408-7347



Contact Extraction Tool
Part Number 318831-1
IS 408-4370

Housings, Free Hanging or Panel Mount

Product Specification:

Centerline spacing—.145 [3.68]

Material:

Housing—Nylon, natural colour

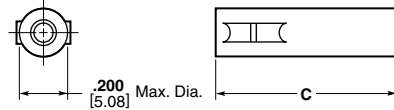
Flammability Rating—UL94V-2

Technical Document:

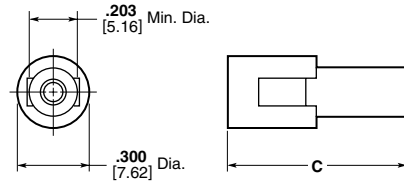
Product Specification

108-1037

1 Circuit

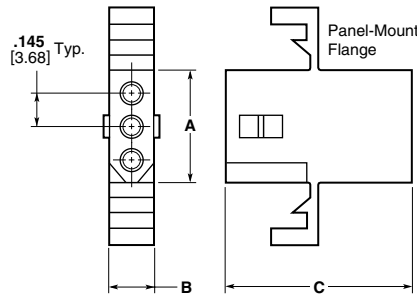


Receptacle

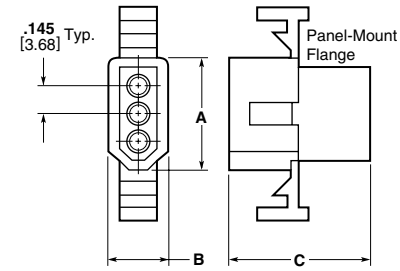


Plug

2, 3, and 4 Circuit, In-Line



Receptacle



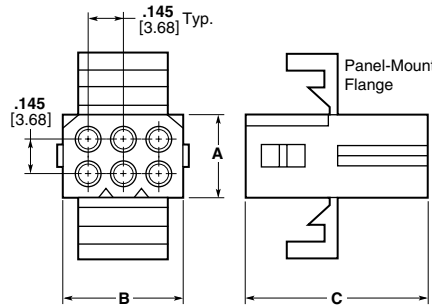
Plug

No. of Circuits	Dimensions						Receptacle Part Numbers		Plug Part Numbers	
	Receptacle			Plug			Panel Mount	Free Hanging	Panel Mount	Free Hanging
	A	B	C	A	B	C				
1	—	—	.785 19.94	—	—	.750 19.05	—	770277-1	—	770278-1
2	.340 8.64	.199 5.05	.820 20.83	.440 11.18	.300 7.62	.780 19.81	770343-1	770342-1 770419-1 ¹	770341-1	770340-1
3	.490 12.45	.199 5.05	.785 19.94	.590 14.99	.300 7.62	.750 19.05	770326-1	770333-1	770332-1	770331-1
4 (In-Line)	.635 16.13	.199 5.05	.785 19.94	.733 18.62	.300 7.62	.750 19.05	770335-1	770274-1	770334-1	770275-1
4 (Matrix)	.345 8.76	.345 8.76	.878 22.30	.445 11.30	.445 11.30	.868 22.04	770441-1	770442-1 794124-1 ²	770443-1	770433-1
6	.345 8.76	.495 12.57	.785 19.94	.445 11.30	.600 15.24	.750 19.05	770354-1	770356-1	770353-1	770355-1
9	.490 12.45	.495 12.57	.790 20.07	.590 14.99	.600 15.24	.750 19.05	770427-1	770429-1	770426-1	770428-1

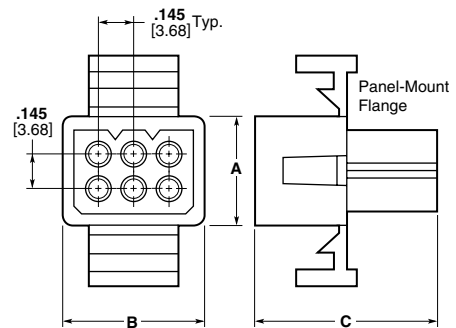
¹ Positive Lock

² Housing fits through a .395 [10.03] dia. cutout.

4, 6, and 9 Circuit, Matrix



Receptacle



Plug