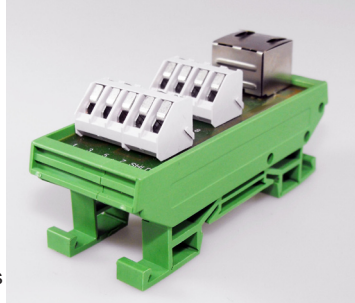


# INTERFACE MODULES & SUPPORTS

## RJ45 Interface Module

- Single RJ45 (8P8C) type socket to screw terminals
- Terminals marked 1 to 8 (+ Shield)
- Separate shield connection
- 35mm DIN rail mounting
- Option for 32mm (G) rail mounting
- Available with optional wall mounting plates
- 45° terminals for easy access
- RoHS compliant
- SVHC free (2012)

CIM/RJ45



### SPECIFICATION

Rating	125V DC 500mA		
Cable entry	0.2-4mm <sup>2</sup> (30-12 AWG)		
Terminal screw	M3		
Strip length	6mm (0.24")		
Max terminal torque	0.5Nm (4lb-in)		
Dimensions:	Height:	Width:	Length:
	45mm (1.77")	83mm (3.27")	34mm (1.02")

TYPE NO.	DESCRIPTION
CIM/RJ45	RJ45 to screw terminal interface. 35 mm din rail mounting

PCB  
TERMINAL  
BLOCKS

INTER-  
CONNECTION

FUSES &  
FUSE-  
HOLDERS

LEDs &  
INDICATORS

MINIATURE  
SWITCHES

LIMIT &  
SAFETY  
SWITCHES

CONTROL  
PRODUCTS

INTERFACE  
MODULES &  
SUPPORTS

RELAY  
BASES

ENCLOSURES

BATTERIES

TRANS-  
FORMERS



+44 (0)1638 716101  
info@camdenboss.com  
www.camdenboss.com

We operate a constant improvement policy,  
our products are subject to change without notice.

**CAMDENBOSS**  
ELECTRONICS & ENCLOSURES