

QUALITY
DURABILITY
TRADITION

TESTING & MEASUREMENT

“I think the guys in our business really appreciate Greenlee tools because they’re user-friendly.”

GREG EDWARDS
Wireman



There With YouSM
faster • safer • easier

Greenlee Category IV meters mean you can handle more power with more confidence.

faster • safer • easier

- Independently certified to meet the highest safety standards
- Category IV compliance—Greenlee’s leading the way in offering protection certified to conform
- Hassle free, completely automatic function selection—amperage, voltage, and resistance with the CMT-80 electrical tester
- Compact design for measuring in tight spaces
- True RMS for no-compromise accuracy with the DM-820 Multimeter
- Easy-read backlit displays for use in low light conditions
- Dual Hall sensors for the most accurate measurement



CMT-80 Electrical Tester



DM-820 Multimeter

Greenlee Introduces CAT IV Meters.

Meeting today's stringent safety standards is essential. We're introducing test instruments which meet the IEC (International Electrotechnical Commission) standards for Category IV. Category IV will cover the highest, and most dangerous, level of transient overvoltage you're likely to encounter in utility service to a facility.

Greenlee's certification of selected instruments to both the most recent UL 3111 requirements and the IEC Category IV requirements brings you assurance of the highest level of protection currently available.

What you should know about Measurement Category ratings.

IEC category standards specify protection levels that are far above a system's rated capacity. Without this additional protection, transient overvoltages, which are becoming increasingly common, can lead to serious injury or death.

Measurement Category I is the signal level for telecommunications and electronic equipment.

Measurement Category II is the local level for fixed or nonfixed powered devices – everything from lighting to appliances to office equipment such as copiers. May also be used in Category I areas.

Measurement Category III is the distribution level – fixed primary feeders or branch circuits. These circuits are usually separated from Category IV (whether utility service or other high-voltage source) by a minimum of one level of transformer isolation. May also be used in Category II and Category I areas.

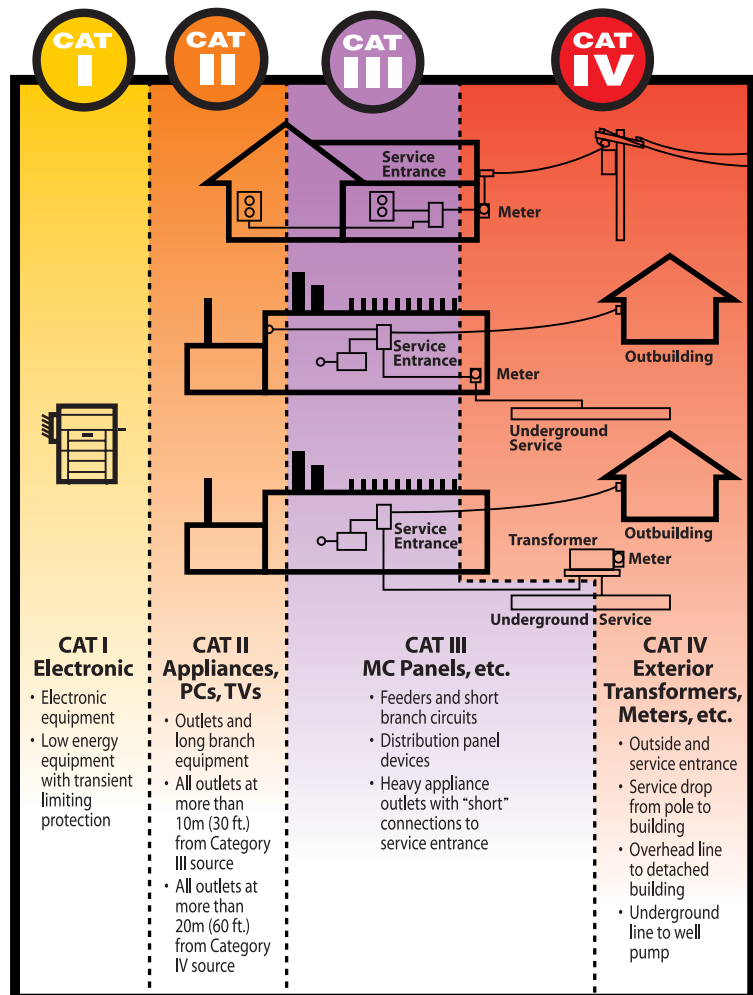
Measurement Category IV is the primary supply level. Greenlee is leading the way in offering protection certified to conform with the highest level of protection as specified by UL & IEC standards. May be used in all Category environments.

Greenlee Instruments – Independently tested and certified to meet the standards.

Throughout this catalog, you'll see Category designations for many Greenlee instruments indicating that they comply with UL & IEC Category II, III, IV. All of these designations reflect third-party testing by independent testing organizations such as UL and TUV – added assurance for you. While there is no requirement for independent verification, we believe you deserve it.

Get the right protection for the job.

Wherever you need overvoltage protection, choose at least the rating appropriate to the type of work you expect to be doing. If you have any questions on using Greenlee test instruments to help ensure user safety, please contact Greenlee.



Electrical Testers Comparison Guide

FEATURE	DVC-10	DVC-6	CMT-80	CMT-60	6701	2010	1112	1110	1010
VDC (V max)	700	600	600	600	480				
VAC (V max)	700	600	600	600	480	1000	1000	1000	600
AAC (A max)			400	200					
Continuity and beeper	•	•	•	•	•				
Resistance			•	•					
Data hold			•	•					
GFCI test	•	•							
Flashlight	•	•					•		
AC Detective™ technology						•	•	•	•
Display type	Digital/9 LED	11 LED	Digital	Digital	9 LED	LED	LED	LED	LED
UL 3111-1 listed	•	•	•	•	•	•	•	•	•
Measurement category	III	III	III	III	III	III	III	III	III
	600V	600V	600V	600V	700V	1000V	1000V	1000V	
UL/cUL	•	•	•	•	•	•	•	•	•
CE	•	•	•	•	•	•	•	•	•

Digital Electrical Tester



- Measures AC/DC voltage 0 to 700V.
- GFCI test capability eliminates the need for additional testers.
- Visual and audible continuity test and live conductor test.
- Built-in flashlight for probe positioning in dark areas – a valuable safety feature.
- Dual display, with LEDs and LCD backlit digital screen for accurate measurement.
- Rugged casing is dust and water resistant to IP65 for any jobsite toughness.
- Accessories included: protective probe caps, carrying case, (2) 1.5V AAA batteries.

CAT. NO.	UPC NO.	DESCRIPTION
DVC-10	07540	Digital Electrical Tester
TC-15	07595	Carry Case (Included)

SPECIFICATIONS

Voltage Measurement	12-700V; 1V resolution
Best Accuracy	LED -10%, LCD ±(3% +3d)
GFCI Range	6mA at 120V AC, ±10%
Continuity Verification	150-300kΩ
Locating Live Conductors	0-700V
Frequency Response	0-70Hz
Dust/Water Protection Class	IP65
Measurement Category	Cat III, 600V per UL 3111-1

Electrical Tester



- Measures AC/DC voltage and polarity, 12-600V.
- Dust and water resistant to IP65 for longer tool life.
- GFCI test capability eliminates the need for additional testers.
- Visual and audible continuity test.
- Single-probe detection of live conductors for enhanced flexibility.
- Built-in flashlight for convenient location of conductors or terminals in dark places.
- Accessories included: protective probe caps, carrying case, (2) 1.5V AAA batteries.

CAT. NO.	UPC NO.	DESCRIPTION
DVC-6	07539	Electrical Tester
TC-15	07595	Carry Case (Included)

SPECIFICATIONS

Voltage Measurement	12-600V
Live Conductor Detection	100-690V AC
GFCI Range	6mA at 120V AC, ±10%
Continuity Verification	150-300kΩ
Frequency Response	0-70Hz
Dust/water Protection Class	IP65
Measurement Category	Cat III, 600V per UL 3111-1

Automatic Electrical Tester



- Hassle free, automatic measurement of amperage, voltage, and resistance.
- Compact design for measuring in tight spaces.
- 400A AC, 600V AC/DC measurement.
- Data hold to capture important readings.
- Auto off for longer battery life.
- Accessories included: (1) 9 V battery, test leads, carrying case

CAT. NO.	UPC NO.	DESCRIPTION
CMT-80	07735	Electrical Tester

SPECIFICATIONS

Amperage Measurement	0.6 - 400.0A AC
Voltage Measurement	AC V: 1.3-600.0V; DC V: 1.8-600.0; -0.6 to -600.0V
Resistance	2000Ω with continuity beeper
Display	6000-count LCD
Jaw Opening	1.06" (27 mm)
Measurement Category	Cat III, 600V per UL 3111-1

Electrical Tester



- Compact amperage and voltage measurement.
- 200A AC, 600V AC/DC measurement.
- Resistance measurement up to 2000Ω with continuity beeper.
- Data hold to capture important readings.
- Auto off for longer battery life.
- Built-in, can't-get-lost test leads.
- Miniclaw jaw design for accurate amp measurement.
- Bright, easy-to-read, 2000-count LCD display.
- Accessories included: (1) 9V battery, carrying case.

CAT. NO.	UPC NO.	DESCRIPTION
CMT-60	07647	Electrical Tester

SPECIFICATIONS

Voltage Measurement	1-600V
Amperage Measurement	200.0A AC
Resistance	2000Ω
Display	3-1/2-digit LCD, 2000-count
Jaw Opening	0.87" (22 mm)
Measurement Category	Cat III, 600V per UL 3111-1

Voltage Tester



- Batteries not required for operation, never need to replace dead batteries.
- Measures to 480V AC/DC.
- Easy-to-read LED display, even in the darkest places.
- Measures AC/DC voltage and polarity.
- Tests continuity.
- Accessories included: protective probe caps.

CAT. NO.	UPC NO.	DESCRIPTION
6701	07538	Voltage Tester

SPECIFICATIONS

Voltage Measurement	12-480V
Live Conductor Detection	100-690V AC
Continuity Verification	0-800kΩ
Frequency	0-60Hz
Measurement Category	Cat III, 700V per UL 3111-1

Touchless AC Voltage Indicator



- Bright LED and audible alarm if voltage is present.
- Fast, easy, noncontact voltage detection.
- Adjustable sensitivity.
- Identifies hot and neutral conductors.
- Checks individual breakers for power.
- Accessories included: (1) 9V battery, carry case.

CAT. NO.	UPC NO.	DESCRIPTION
2010	34470	Touchless AC Voltage Indicator
TC-15	07595	Carry Case (Included)

SPECIFICATIONS

Voltage Measurement	AC V 24-1000;	Frequency	50-500Hz
Measurement Category	Cat III, 1000V per UL 3111-1		

Non-Contact Voltage Detector with Flashlight



- Finds breaks in wires or detects the presence of voltage at outlets, lighting fixtures, circuit breakers, wires, and cables.
- LED flashlight conserves batteries, eliminates bulb replacement.
- Pen size, fits in pocket or tool pouch.
- On/off switch for longer battery life.
- Bright LED in back cap, plus an audible alarm to warn if voltage is present.
- Built-in super bright LED flashlight for added convenience.
- Accessories included: (2) 1.5 volt AAA batteries.

CAT. NO.	UPC NO.	DESCRIPTION
1112	07659	Volt Tick Voltage Detector with Flashlight

SPECIFICATIONS

Voltage Detection	AC V 50-1000;	Frequency	50-500Hz
Measurement Category	Cat III, 1000V per UL 3111-1		

Non-Contact Voltage Detector



- Fast, easy, noncontact voltage detection.
- Convenient pen size, fits in pocket or tool pouch.
- Bright LED and audible alarm if voltage is present.
- On/off switch for longer battery life.
- Use to detect the presence of voltage at outlets, lighting fixtures, circuit breakers, wires, and cables or find a break in a wire.
- Accessories included: (2) 1.5 volt AAA batteries.

CAT. NO.	UPC NO.	DESCRIPTION
1110	07561	Volt Tick Voltage Detector

SPECIFICATIONS

Voltage Detection	AC V 50-1000;	Frequency	50-500Hz
Measurement Category	Cat III, 1000V per UL 3111-1		

Non-Contact Voltage Detector



- Battery check feature.
- Visual and audible indicators.
- Accessories included: (2) No. 357 watch-type batteries.
- Pocket clip doubles as On/Off switch.

CAT. NO.	UPC NO.	DESCRIPTION
1010	35952	Pocket Volt Tick

SPECIFICATIONS

Voltage Detection	AC V 50-600
--------------------------	-------------

DMM Comparison Guide

FEATURE	DML-430	DML-54	DM-860	DM-820	DM-810	DM-800	DM-510	DM-500
True RMS	•	•	•	•	•		•	
DCA (A max)	10	10	10	10	10	10	10	10
Maximum resolution (µA)	0.1	0.1	0.01	0.1	0.1	0.1	0.01	0.01
Best accuracy (%)	0.2	0.2	0.1	0.2	0.2	0.2	0.2	0.2
ACA (A max)	10	10	10	10	10	10	10	10
Maximum resolution (µA)	.10	0.1	0.01	0.1	0.1	0.1	0.1	0.1
Best accuracy (%)	0.6	0.6	0.5	0.6	0.6	0.6	1.0	1.2
DCV (V max)	1000	1000	1000	1000	1000	1000	1000	1000
Maximum resolution (µV)	10	10	10	10	10	10	100	100
Best accuracy (%)	0.1	0.1	0.03	0.1	0.1	0.1	0.2	0.2
ACV (V max)	1000	1000	1000	1000	1000	1000	750	750
Maximum resolution (µV)	10	10	1000	10	10	10	100	100
Best accuracy (%)	0.5	0.5	1.5	0.5	0.5	0.5	1.1	1.3
Resistance (M)	50	50	50	50	50	50	40	40
Maximum resolution (mΩ)	10	10	10	10	10	10	100	100
Best accuracy (%)	0.1	0.1	0.07	0.1	0.1	0.1	0.5	0.5
Continuity and beeper	•	•	•	•	•	•	•	•
Diode test	•	•	•	•	•	•	•	•
Capacitance	•	•	•	•	•	•	•	•
Frequency	•	•	•	•	•	•	•	•
Frequency response (Hz)	40-500	40-500	20-100K	40-500	40-500	40-500	50-500	50-500
Temperature (T1)	•	•	•	•			•	•
Temperature (dual channel, T1, T2)			•				•	•
Display type	Digital	Digital	Digital	Digital	Digital	Digital	Digital	Digital
Display update X/sec	5	5	5	5	5	5	4	4
Count	5000	5000	50,000/500,000	5000	5000	5000	9999	9999
Backlit	•	•	•	•	•	•		
Analog bar graph	52 segments	52 segments	42 segments	52 segments	52 segments	52 segments	42 segments	42 segments
Analog update X/sec	60	60	60	60	60	60	20	20
Zoom				•				
RS-232 optical interface	•	•	•	•	•	•		
Auto and manual ranging	•	•	•	•	•	•	•	•
Auto power off	•	•	•	•	•	•	•	•
Non-contact Voltage Detection								
Peak hold			•	•				
Data hold	•	•	•	•	•	•	•	•
Min, max, avg			max, min only	max, min only			•	•
Relative offset mode			•	•			•	•
Harmonics (HAR)							•	
Process loop measurement			•				•	•
Data logging (point stored)	43000	5400						
Test lead calibration	•	•		•	•	•		
Duty cycle			•					
UL 3111-1 listed	•	•	•	•	•	•	•	•
Measurement category	IV, 600V III, 1000V	IV, 600V III, 1000V	IV, 600V III, 1000V	IV, 600V III, 1000V	IV, 600V II, 1000V	IV, 600V III, 1000V	III, 600V II, 1000V	III, 600V II, 1000V
cUL or CSA	•	•	•	•	•	•	•	•
UL Classified	•	•	•	•	•	•	•	•
CE	•	•	•	•	•	•	•	•

DMM Comparison Guide

FEATURE	DM-210	DM-200	DM-110	DM-100	93-606	DM-55	DM-50	93-602	93-502	PDMM-10
True RMS			•							
DCA (A max)	10	10	10	10	10	200mA	200mA	200mA	250mA	200mA
Maximum resolution (µA)	0.1	0.1	0.1	0.1	0.1	0.1	100	100		100
Best accuracy (%)	0.8	0.8	1.7	1.7	1.2	2.5	2.5	1.0		2.0
ACA (A max)	10	10	10	10	10					
Maximum resolution (µA)	.10	0.1	0.1	0.1	0.1					
Best accuracy (%)	1.0	1.0	2.2	2.2	1.5					
DCV (V max)	1000	1000	1000	1000	600	300	300	600	300	300
Maximum resolution (µV)	100	100	100	100	100	0.1	0.1	1000		1000
Best accuracy (%)	0.3	0.3	0.5	0.5	0.5	1.2	1.2	0.8		0.8
ACV (V max)	750	750	750	750	600	300	300	600	300	300
Maximum resolution (µV)	100	100	100	1000	100	0.1V	0.1V	0.1V		0.1
Best accuracy (%)	1.0	1.0	1.5	1.5	1.2	2.0	1.5	1.2		1.5
Resistance (M)	25	25	40	35	20	2	2	2	2	2
Maximum resolution (mΩ)	100	100	100	100	100	100	1000	100		1000
Best accuracy (%)	0.4	0.4	1.0	1.0	1.0	1.5	1.5	1.0		1.5
Continuity and beeper	•	•	•	•	•	•		•		•
Diode test	•	•	•	•	•	•	•	•		•
Capacitance	•		•							
Frequency	•		•		•					
Frequency response (Hz)	50-500	50-500	40-500	40-500	40-500			50-500		
Temperature (T1)	•					•				
Temperature (dual channel, T1, T2)										
Display type	Digital	Digital	Digital	Digital	Digital	Digital	Digital	Digital	Analog	Digital
Display update X/sec	3	3	2	2	3	2.5	2.5	2.5		2.5
Count	2500	2500	4000	3200	2000	2000	2000	2000		2000
Backlit										
Analog bar graph			82 segments	70 segments						
Analog update X/sec			12	12						
Zoom										
RS-232 optical interface	•	•								
Auto and manual ranging	•	•	•	•						
Auto power off	•	•	•	•						
Non-contact Voltage Detection	•	•								
Peak hold										
Data hold	•	•	•	•	•					
Min, max, avg					max only					
Relative offset mode	•									
Harmonics (HAR)										
Process loop measurement										
Data logging (point stored)										
Test lead calibration										
Duty cycle	•									
UL 3111-1 listed	•	•	•	•	•	•	•	•	•	•
Measurement category	III, 600V II, 1000V	III, 600V II, 1000V	III, 600V II, 1000V	III, 600V II, 1000V	III, 300V	II, 300V	II, 300V	II, 600V	II, 300V	II, 300V
cUL or CSA	•	•	•	•	•	•	•	•	•	•
UL Classified										
CE	•	•	•	•	•	•	•	•	•	•

Digital Logging Meters



- True RMS, autoranging, 3-5/6-digit, 5000-count display for greater accuracy.
- Selectable sampling intervals between 0.05 seconds – 480 seconds, 8-month max (DML-430) logging period.
- 0.05 second memory rate to capture fast transients.
- Backlit display for easy viewing.
- Frequency, temperature, and capacitance measurements and diode and continuity tests standard.
- RS-232 capable, may be connected to a PC for extended measurement capability with optional interface DMSC-8L.
- Accessories included: (1) 9V battery, bead temperature probe (400°F/ 204°C max.), test leads, carrying case.

CAT. NO.	UPC NO.	DESCRIPTION
DML-430	07553	Digital Logging Meter (43,000 data points)
DML-430-C*	07620*	Digital Logging Meter (43,000 data points)
DML-54	07552	Digital Logging Meter (5,400 data points)
DML-54-C*	07619*	Digital Logging Meter (5,400 data points)
TC-20	07535	Carry Case (Included)

* Includes Certificate of Calibration

SPECIFICATIONS

Voltage Measurement	50.00, 500.0mV; 5.000, 50.00, 500.0, 1000V
Amperage Measurement	500.0, 5000μA; 50.00, 500.0mA; 5.000, 10.00A
Resistance	50.00, 500.0Ω; 5.000, 50.00, 500.0kΩ; 5.000, 50.00MΩ
Capacitance	50.00, 500.0nF; 5.000, 50.00, 500.0, 9999μF
Frequency	10Hz-125kHz
Temperature	K type, -58°F to 1832°F (-50°C to 1000°C)
Measurement Category	Cat IV, 600V per IEC 61010-1; Cat III, 1000V per UL 3111-1

Industrial 500,000-Count Digital Multimeter



DM-860 features:

- True RMS, 5-5/6-digit, 500,000-count display for greater accuracy.
- Audible input alert helps avoid damage to meter.
- Record max, min, and max-min, and data hold.
- Crest capture (peak hold) max, min, and max-min readings.
- Relative offset display mode makes monitoring relative measurement changes simple.
- Performs frequency, temperature, and capacitance measurements, plus diode and continuity tests
- Measures temperatures up to 1832°F.
- Autoranging for convenient operation – and to save you time.
- 42-segment analog bar graph display capability makes it easy to view quick changes.
- Bright, backlit display is easy to read under any light condition.
- RS-232 capable, may be connected to a PC for extended measurement capability with optional interface DMSC-9.
- Accessories included: (1) 9V battery, bead temperature probe (400°F/ 204°C max.), test leads, carrying case.

CAT. NO.	UPC NO.	DESCRIPTION
DM-860	07797	Industrial 500,000-Count Digital Multimeter
DM-860-C	07658	Industrial 500,000-Count Digital Multimeter

SPECIFICATIONS

Voltage Measurement	500.00mV; 5.0000, 50.000, 500.00, 1000.0V
Amperage Measurement	500.00, 5000.0μA; 50.000, 500.00mA, 5.0000, 10.000A
Resistance	500.00Ω; 5.0000, 50.000, 500.00kΩ; 5.0000, 50.000MΩ
Capacitance	50.00; 500.0nF; 5.000, 50.00, 500.0, 9999μF
Frequency	5Hz-200kHz sine wave; 5Hz-2MHz logic level square wave
Temperature	K type, -58°F to 1832°F (-50°C to 1000°C)
Measurement Category	Cat IV, 600V per IEC 61010-1; Cat III, 1000V per UL 3111-1

Digital Multimeters

DM-800, DM-810, DM-820



DM-800 features:

- Autoranging, 3-5/6-digit, 5000-count display for greater accuracy.
- Frequency and capacitance measurements plus diode and continuity tests standard.
- Data hold to capture measurements.
- RS-232 capable, may be connected to a PC for extended measurement capability with optional optically-isolated interface DMSC-8L, purchased separately.
- Low ohm range calibration, subtracts test lead resistance.
- Backlit display for easy viewing.

DM-810 also features:

- True RMS for no-compromise accuracy.

DM-820 also features:

- Record max, min, and max-min readings.
- Crest capture (5ms peak hold) max, min, and max-min readings.
- Relative offset display mode to see relative changes in measurements.
- Temperature measurement standard.

Accessories included: (1) 9V battery, carrying case (DM-820, DM-810), bead temperature probe (DM-820 only, 400°F/204°C max), test leads.

CAT. NO.	UPC NO.	DESCRIPTION
DM-820	07551	Digital Multimeter
DM-820-C*	07618*	Digital Multimeter
DM-810	07550	Digital Multimeter
DM-810-C*	07617*	Digital Multimeter
DM-800	07549	Digital Multimeter
DM-800-C*	07616*	Digital Multimeter
TC-20	07535	Carry Case (Included)

* Includes Certificate of Calibration

SPECIFICATIONS

Voltage Measurement	50.00, 500.0mV; 5.000, 50.00, 500.0, 1000V
Amperage Measurement	500.0, 5000μA; 50.00, 500.0mA; 5.000, 10.00A
Resistance	50.00, 500.0Ω; 5.000, 50.00, 500.0kΩ; 5.000, 50.00MΩ
Capacitance	50.00, 500.0nF; 5.000, 50.00, 500.0, 9999μF
Frequency	10Hz-125kHz
Temperature	K type, -58°F to 1832°F (-50°C to 1000°C)
Measurement Category	Cat IV, 600V per IEC 61010-1; Cat III, 1000V per UL 3111-1

Professional Plant Digital Multimeters



DM-500 features:

- Autoranging for convenient operation and to save you time.
- Record max, min, max-min, and average readings and data hold.
- Relative offset display mode to see relative changes in measurements.
- Frequency, temperature, and capacitance measurements plus diode and continuity tests standard.
- Auto power off and low battery indicator.

DM-510 also features:

- HAR feature to measure harmonic content.
- True RMS for no-compromise accuracy.

Accessories included: (1) 9V battery, test leads, bead temperature probe.

CAT. NO.	UPC NO.	DESCRIPTION
DM-510	07548	Professional Plant Digital Multimeters
DM-510-C*	07615*	Professional Plant Digital Multimeters
DM-500	07547	Professional Plant Digital Multimeters
DM-500-C*	07614*	Professional Plant Digital Multimeters

* Includes Certificate of Calibration

SPECIFICATIONS

Voltage Measurement	ACV – 999.9mV; 9.999, 99.99, 750.0V; DCV – 999.9mV; 9.999, 99.99, 999.9V
Amperage Measurement	ACA – 400.0µA; 40.00mA; 10.0A; DCA – 40.00, 400.0µA; 4.000, 40.00mA; 4.000, 10.00A
Resistance	9.999Ω; 9.999, 99.99, 999.9kΩ; 4.000, 40.00MΩ
Capacitance	1.000, 10.00, 100.0µF; 1.000, 10.00mF
Frequency	9.999, 99.99, 999.9Hz; 9.999, 50.00kHz
Temperature	K type, -4°F to 932°F (-20°C to 500°C)
Measurement Category	Cat III, 600V; Cat II, 750V AC/1000V DC per UL 3111-1

Digital Multimeters



DM-200 feature:

- Autoranging for convenient operation, non-contact voltage detection, and to save you time.
- Data hold to capture measurements.
- Auto power off and low battery indicator.
- RS-232 capable, may be connected to a PC for extended measurement capability with optional optically isolated interface DMSC-2.

DM-210 also features:

- Relative offset display mode to see relative changes in measurements.
- Frequency, temperature, and capacitance measurements.
- AC duty cycle.

Accessories included: (2) 1.5V AAA batteries, test leads, bead temperature probe (DM-210 only, 400°F/204°C max).

CAT. NO.	UPC NO.	DESCRIPTION
DM-210	07546	Digital Multimeters
DM-210-C*	07613*	Digital Multimeters
DM-200	07545	Digital Multimeters
DM-200-C*	06712*	Digital Multimeters

* Includes Certificate of Calibration

SPECIFICATIONS

Voltage Measurement	ACV – 250.0mV; 2.500, 25.00, 250.0, 750V DCV – 250.0mV; 2.500, 25.00, 250.0, 1000V
Amperage Measurement	250.0, 2500µA; 25.00, 250.0mA; 2.500, 10.00A
Resistance	250.0Ω; 2.500, 25.00, 250.0kΩ; 2.500, 25.00MΩ
AC Detective Voltage Detection Range	30V-500V+
Capacitance	2.500, 25.00, 250.0nF; 2.500, 25.00µF
Frequency	30Hz-200kHz
Temperature	K type, -4°F to 572°F (-20°C to 300°C)
Measurement Category	Cat III, 600V; Cat II, 750V AC/1000V DC per UL 3111-1

Digital Multimeters



DM-110

DM-100 features:

- Easy-to-read 3200-count display.
- Diode and continuity tests standard.
- Sleep mode to conserve battery life and low battery indicator.
- Data hold to capture important readings.
- 70-segment analog bar graph to view quick changes.

DM-110 also features:

- True RMS for no-compromise accuracy.
- Capacitance and frequency measurements.
- Enhanced display – 4000-count.
- Enhanced analog bar graph – 82-segment.

Accessories included: (1) 9V battery (DM-110);

(2) 1.5V AAA batteries (DM-100), test leads, protective boot

CAT. NO.	UPC NO.	DESCRIPTION
DM-110	07649	True RMS Multimeter
DM-100	07648	Digital Multimeter



DM-100

SPECIFICATIONS: DM-110

Voltage Measurement	ACV 400.0mV; 4.000, 40.00, 400.0, 750V DCV 400.0mV; 4.000, 40.00, 400.0, 1000V
Amperage Measurement	ACA 400.0, 4000µA; 10.00A DCA 400.0, 4000µA; 10.00A
Resistance	400.0Ω; 4.000, 40.00, 400.0kΩ; 4.000, 40.00MΩ
Capacitance	4.000, 40.00, 400.0nF; 4.000, 40.00, 400.0µF; 4.000, 40.00mF
Frequency	4.000, 40.00, 400.0kHz; 4.000, 40.00MHz
Measurement Category	Cat III, 600V; Cat II, 1000V per UL 3111-1

SPECIFICATIONS: DM-100

Voltage Ranges	ACV 3.200, 32.00, 320.0, 750V DCV 320.0mV; 3.200, 32.00, 320.0, 1000V
Amperage Range	ACA 320.0, 3200µA; 10.00A DCA 320.0, 3200µA; 10.00A
Resistance	0-320.0Ω; 3.200, 32.00, 320.0kΩ; 3.200, 32.00MΩ
Measurement Category	Cat III, 600V; Cat II, 1000V per UL 3111-1

Digital Multimeter



- Measures AC/DC voltage, AC/DC current, and frequency.
- Resistance, continuity, and diode tests for added versatility.
- Data hold and max hold to capture readings.
- Accessories included: (1) 9V battery, test leads.

CAT. NO.	UPC NO.	DESCRIPTION
93-606	07544	Digital Multimeter

SPECIFICATIONS

Voltage Measurement	200.0mV; 2.000, 20.00, 200.0, 600V
Amperage Measurement	200.0µA; 2.000, 20.00, 200.0mA; 10.00A
Resistance	200.0Ω; 2.000, 20.00, 200.0kΩ; 2.000, 20.00MΩ
Frequency	2.000, 20.00, 200.0 kHz; 2.000, 15.00MHz
Measurement Category	Cat III, 300V; Cat II, 600V per UL 3111-1

Multimeter



- Measures AC/DC voltage, DC current, and resistance.
- Measures temperature over a wide range.
- Performs continuity and diode tests.
- Accessories included: (1) 9V battery, Type K bead temperature probe (482°F/250°C max), protective boot.

CAT. NO.	UPC NO.	DESCRIPTION
DM-55	07679	Multimeter

SPECIFICATIONS

Voltage Measurement	ACV 200.0, 300V DCV 200.0, 2000mV; 20.00, 200.0, 300V
Amperage Measurement	DCA 200.0, 2000μA; 20.00, 200.0mA
Resistance	200.0, 2000Ω; 20.00, 200.0, 2000kΩ
Temperature Range	-40°F to 1832°F (-40°C to 1000°C)
Measurement Category	Cat II, 300V per UL 3111-1

Multimeter



- Measures AC/DC voltage, DC current, and resistance.
- Tests diodes, 1.5V and 9V batteries.
- Accessories included: (1) 9V battery, protective boot.

CAT. NO.	UPC NO.	DESCRIPTION
DM-50	07678	Multimeter

SPECIFICATIONS

Voltage Measurement	ACV 200.0, 300V DCV 2.000, 20.00, 200.0, 300V
Amperage Measurement	DCA 200.0mA
Resistance	2.000, 20.00, 200.0kΩ; 2.000MΩ
Measurement Category	Cat II, 300V per UL 3111-1

Digital Multimeter



- Measures AC/DC voltage, DC current, and resistance.
- Diode, transistor h_{FE} , and continuity tests.
- Polarity, low battery, and overload indicators.
- Accessories included: (1) 9V battery, test leads.

CAT. NO.	UPC NO.	DESCRIPTION
93-602	00044	Digital Multimeter

SPECIFICATIONS

Voltage Measurement	ACV 200.0, 600V DCV 2.000, 20.00, 200.0, 600V
DC Current	2.000, 20.00, 200.0mA
Resistance	200.0Ω; 2.000, 20.00, 200.00kΩ; 2.000MΩ
Measurement Category	Cat II, 600V per UL 3111-1

Analog Multimeter



- Permanently attached tests leads.
- 1-3/4", 3-color, mirrored scale.
- Pocket-sized.
- Accessories included: (1) 1.5V AA battery.

CAT. NO.	UPC NO.	DESCRIPTION
93-502	01304	Analog Multimeter

SPECIFICATIONS

Voltage Measurement	ACV – 50, 150, 300V; DCV – 2.5, 10, 50, 150, 300V
DC Current	0.5, 10, 250mA
Resistance	20kΩ, 2MΩ
Battery Test	1.5V and 9V
Measurement Category	Cat II, 300V per UL 3111-1

Pocket Multimeter



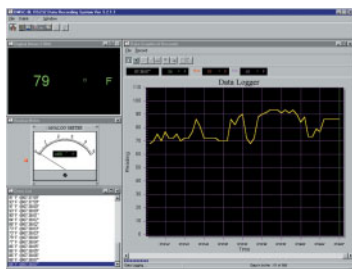
- Measures AC and DC voltage, DC amps, and resistance.
- Continuity beeper and diode test standard.
- Accessories included: (1) 12V battery, protective case.

CAT. NO.	UPC NO.	DESCRIPTION
PDMM-10	07660	Pocket Multimeter

SPECIFICATIONS

Voltage Measurement	ACV – 200.0, 300V; DCV – 2.000, 20.00, 200.00, 300V
Amperage Measurement	DCA 200.0mA
Resistance	2.000, 20.00, 200.0kΩ
Measurement Category	Cat II, 300V per UL 3111-1

RS-232 Interface Kits



DMSC-8L

See both digital and analog meter readouts on-screen, plus a large, easy-to-read graph of logged values – in this case, a thermocouple monitoring air temperature in a forced-air furnace duct.



- Connects to a PC serial port for data storage and retrieval from Greenlee digital multimeters.
- Allows retrieval of stored data and real-time data logging and graphing.
- Retrieve stored data log from DML-series.
- Export data to disk for analysis with any spreadsheet.

CAT. NO.	UPC NO.	DESCRIPTION
DMSC-2	07555	For 200-Series Digital Multimeters
DMSC-8L	07556	For DM-800/810/820 and DML-Series Digital Multimeters
DMSC-9	07755	For DM-860 Digital Multimeter

SPECIFICATIONS

Software Requirements	Windows ME/98/95 or Windows XP/2000/NT4
Hardware Requirements	CPU and memory—minimum Windows requirement. Monitor—at least 640 x 480, 800 x 600 recommended. Hard disk—at least 20 megabytes free space. Connection—free serial COM port with 9-pin connector.

Clamp-on Meter Comparison Guide

FEATURE	CMGRT-100	CMP-200	CMI-200	CMI-100	CM-1550	CM-1500	CM-1350	CM-1300
True RMS		•	•	•	•		•	
DCA (A max)		2000	2500	1000	1000	1000		
Maximum resolution (A)		0.1	0.1	0.1	0.1	0.1		
Best accuracy (%)		1.5	1.5	2.0	1.2	1.2		
ACA (A max)	30	2000	2100	1000	1000	1000	1000	1000
Maximum resolution (A)	1mA	0.1	0.1	0.1	0.1	0.1	0.1	0.1
Best accuracy (%)	2.5	1.5	1.5	2.0	1.9	1.9	1.9	1.9
DCV (V max)		600	600	600	1000	1000	1000	1000
Maximum resolution (V)		0.1	1mV	0.1mV	0.1	0.1	0.1	0.1
Best accuracy (%)		1.5	1.5	0.75	0.7	0.7	0.7	0.7
ACV (V max)		600	600	600	750	750	750	750
Maximum resolution (V)		0.1	0.1mV	0.1mV	0.1	0.1	0.1	0.1
Best accuracy (%)		1.5	1.5	1.2	1.0	1.0	1.0	1.0
Resistance (Ω)	1200		40M	40M	400	400	400	400
Maximum resolution (Ω)	0.01		0.1	0.1	0.1	0.1	0.1	0.1
Best accuracy (%)	1.5		1.5	1.0	1.0	1.0	1.0	1.0
Continuity and beeper			•	•	•	•	•	•
Diode test			•	•				
Capacitance								
Frequency		•	•	•	•	•	•	•
Frequency response (Hz)	47-800	40-400	40-1k	40-450	50-200	50-200	50-400	50-400
Temperature (T1)								
Jaw Opening	1.25" (32 mm)	2.17" (55 mm)	2.17" (55 mm)	1.81" (46 mm)	2.0" (51 mm)	2.0" (51 mm)	2.0" (51 mm)	2.0" (51 mm)
Display type	Digital	Dual Digital	Digital	Digital	Digital	Digital	Digital	Digital
Display update X/sec		2	2	2	2.5	2.5	2.5	2.5
Count	3000	4000	4000	4000	4000	4000	4000	4000
Analog bar graph			40 segments	40 segments	42 segments	42 segments	42 segments	42 segments
Analog update X/sec			20	20	13	13	13	13
Zoom analog bar graph								
Low Battery Indicator		•	•	•	•	•	•	•
Autoranging	•	•	•	•	•	•	•	•
Auto power off	•		•	•	•	•	•	•
Peak hold				•	•	•	•	•
Data hold	•	•	•	•	•	•	•	•
Min, max			•	•	•	•	•	•
Data logging								
Power factor		•						
True power (kW)		1200						
Apparent Power (kVA)		1200						
UL 3111-1 listed	•	•	•	•	•	•	•	•
Measurement Category	III, 150V	III, 600V	III, 600V	III, 600V	IV, 600V III, 1000V	IV, 600V III, 1000V	IV, 600V III, 1000V	IV, 600V III, 1000V
cUL or CSA		•	•	•	•	•	•	•
UL Classified					•	•	•	•
CE	•	•	•	•	•	•	•	•

Clamp-on Meter Comparison Guide

FEATURE	CM-950	CM-900	CM-850	CM-800	CM-600	CM-400	CM-310	AM-600
True RMS	•		•					
DCA (A max)	600	600						
Maximum resolution (A)	0.1	0.1						
Best accuracy (%)	1.2	1.2						
ACA (A max)	600	600	600	600	600	300	300	600
Maximum resolution (A)	0.1	0.1	0.1	0.1	0.1	0.1	0.01	
Best accuracy (%)	1.9	1.9	1.9	1.9	1.9	1.9	2.0	3.0
DCV (V max)	600	600	600	600		600		300
Maximum resolution (V)	0.1	0.1	0.1	0.1		0.1mV		
Best accuracy (%)	0.7	0.7	0.7	0.7		0.7		3.0
ACV (V max)	600	600	600	600	600	600		600
Maximum resolution (V)	0.1	0.1	0.1	0.1	1	1.0mV		
Best accuracy (%)	1.0	1.0	1.0	1.0	1.2	1.7		3.0
Resistance (Ω)	400	400	400	400	2000	32M		3k
Maximum resolution (Ω)	0.1	0.1	0.1	0.1	1	0.1		
Best accuracy (%)	1.0	1.0	1.0	1.0	1.5	1.0		3.0
Continuity and beeper	•	•	•	•	•	•		•
Diode test						•		
Capacitance								
Frequency	•	•	•	•				
Frequency response (Hz)	50-200	50-200	50-400	50-400	40-500	40-500	50-60	50-60
Temperature (T1)								
Jaw Opening	1.38" (35 mm)	1.38" (35 mm)	1.34" (34 mm)	1.34" (34 mm)	1.38" (35 mm)	1.18" (30 mm)	1.10" (28 mm)	1.65" (42 mm)
Display type	Digital	Digital	Digital	Digital	Digital	Digital	Digital	Analog
Display update X/sec	2.5	2.5	2.5	2.5	4	2	3	
Count	4000	4000	4000	4000	2000	3200	2000	
Analog bar graph	42 segments	42 segments	42 segments	42 segments		65 segments		
Analog update X/sec	13	13	13	13		12		
Zoom analog bar graph								
Low Battery Indicator	•	•	•	•	•	•	•	
Autoranging	•	•	•	•		•		
Auto power off	•	•	•	•	•	•		
Peak hold	•	•	•	•			•	
Data hold	•	•	•	•	•	•	•	
Min, max	•	•	•	•				
Data logging								
Power factor								
True power (kW)								
Apparent Power (kVA)								
UL 3111-1 listed	•	•	•	•	•	•	•	•
Measurement Category	III, 600V	III, 600V	III, 600V	III, 600V	III, 600V	II, 600V	III, 600V	III, 600V
cUL or CSA	•	•	•	•	•	•	•	•
UL Classified								
CE	•	•	•	•	•	•	•	•

Ground Resistance Tester



- Reads ground resistance down to 0.10Ω.
- Fully autoranging with data hold to capture readings.
- Convenient alarm and 99-point memory functions.
- Measures up to 30A RMS ground or leakage current.
- Measures currents down to 1mA.
- Accessories included: (1) 9V battery, molded carrying case, test resistance loop.

CAT. NO.	UPC NO.	DESCRIPTION
CMGRT-100	07653	Ground Resistance Tester
CMGRT-100-C*	07730*	Ground Resistance Tester

* Includes Certificate of Calibration

SPECIFICATIONS

Ground Resistance Measurement	0.10 to 1200Ω
Ground/Leakage Current Measurement	299mA; 2.999A, 29.99A
Display	3-3/4-digit LCD, 2999-count
Jaw Opening	1.25" (32 mm)
Measurement Category	Cat III, 150V per UL 3111-1

2000A Power Clamp



- True RMS for accurate measurement when harmonics are present.
- Extra-high-capacity 2000A measurement.
- Measures True Power, Apparent Power, Reactive Power, Power Factor, voltage, current, and frequency.
- Calculates total power and power factor on 3-phase, 3-wire, and 3-phase, 4-wire, and 1-phase, 3-wire circuits using stored measurement.
- Stores up to 4 sets of measurements for calculation on multi-phase and multi-wire circuits.
- Large, easy-to-read, dual 4-digit, 4000-count LCD display for high resolution.
- Instantly recall the calculated Power Factor.
- Accessories included: (1) 9V battery, test leads, carrying case.

CAT. NO.	UPC NO.	DESCRIPTION
CMP-200	07568	2000A Power Clamp
CMP-200-C*	07635*	2000A Power Clamp

* Includes Certificate of Calibration

SPECIFICATIONS

True Power	99.99, 999.9, 1200kW
Reactive Power	99.99, 999.9, 1200kVAR
Amperage Measurement	499.9, 2000A
Voltage Measurement	499.9, 600V
Frequency	10Hz-1000Hz
Jaw Opening	2.17" (55 mm)
Measurement Category	Cat III, 600V per UL 3111-1

2500A Industrial Clamp Meter



- True RMS for accurate measurement when harmonics are present.
- High capacity 2500A DC, 2100A AC amperage measurement.
- 600V AC/DC voltage, frequency, and resistance measurements for maximum versatility.
- Peak hold, min-max, relative offset, and analog bar graph to help monitor power changes.
- Produces 1mV per amp output to allow use as a remote transducer, linked to a multimeter or oscilloscope.
- Auto power off for longer battery life.
- Accessories included: (1) 9V battery, test leads, carrying case.

CAT. NO.	UPC NO.	DESCRIPTION
CMI-200	07567	2500A Industrial Clamp Meter
CMI-200-C*	07634*	2500A Industrial Clamp Meter

* Includes Certificate of Calibration

SPECIFICATIONS

Amperage Measurement	AC – 400.0, 2100A; DC – 400.0, 2500A
Voltage Measurement	AC – 4.000, 40.00, 400.0, 600V; DC – 400.0mV; 4.000, 40.00, 400.0, 600V
Display	3-3/4-digit, 4000-count (9999 for frequency)
Frequency	99.99, 999.9Hz; 9.999, 99.99, 999.9kHz
Resistance	400.0Ω; 4.000, 40.00, 400.0kΩ; 4.000, 40.00MΩ
Jaw Opening	2.17" (55 mm)
Voltage Output	1mV output per 1 amp input
Measurement Category	Cat III, 600V per UL 3111-1

Industrial Clamp Meter



- High capacity 1000A AC/DC amperage measurement.
- 600V AC/DC voltage, frequency, and resistance measurements for maximum versatility.
- Continuity and diode tests with audible and visual indicators.
- Accessories included: (1) 9V battery, test leads, carrying case.

CAT. NO.	UPC NO.	DESCRIPTION
CMI-100	07564	Industrial Clamp Meter
CMI-100-C*	07631*	Industrial Clamp Meter

* Includes Certificate of Calibration

SPECIFICATIONS

Amperage Measurement	400.0, 1000A
Voltage Measurement	AC – 4.000, 40.00, 400.0, 600V; DC – 400.0mV; 4.000, 40.00, 400.0, 600V
Display	3-3/4-digit, 4000-count (9999 for frequency)
Frequency Voltage Mode	99.99, 999.9Hz; 9.999, 99.99, 800.0kHz
Current Mode	99.99, 999.9Hz
Resistance	400.0Ω; 4.000, 40.00, 400.0kΩ; 4.000, 40.00MΩ
Jaw Opening	1.81" (46 mm)
Measurement Category	Cat III, 600V

1000A AC/DC True RMS Clamp Meter



- True RMS for the most accurate measurement when harmonics are present
- AC/DC amperage, AC/DC voltage, frequency and resistance measuring capability.
- Dual Hall sensor for the most accurate measurements.
- Easy to read backlit display for use in low light conditions.
- Peak and data hold to capture measurement.
- MIN/MAX feature for added versatility.
- Analog bar graph to view quick changes.
- Audible continuity test.
- Selectable Auto Off for longer battery life.
- Accessories included: (1) 9 V battery, test leads, carrying case

CAT. NO.	UPC NO.	DESCRIPTION
CM-1550	07799	True RMS Clamp Meter
CM-1550-C*	10863*	True RMS Clamp Meter

*Includes certificate of calibration

SPECIFICATIONS

Amperage Measurement	400.0, 1000A
Voltage Measurement	AC V: 400.0, 750V; DC V: 400.0, 1000V
Resistance	400.0Ω
Frequency	0.400kHz
Display	4000-count LCD display
Jaw Opening	2.0" (51 mm)
Measurement Category	Cat IV, 600V per IEC 61010-1; Cat III, 750V AC/1000V DC per UL 3111-1

1000A AC/DC Clamp Meter



- AC/DC amperage, AC/DC voltage, frequency and resistance measuring capability.
- Dual Hall sensor for the most accurate measurements.
- Easy to read backlit display for use in low light conditions.
- Peak and data hold to capture measurement.
- MIN/MAX feature for added versatility.
- Analog bar graph to view quick changes.
- Audible continuity test.
- Selectable Auto Off for longer battery life.
- Accessories included: (2) 1.5 V AA batteries, test leads, carrying case

CAT. NO.	UPC NO.	DESCRIPTION
CM-1500	07798	Clamp Meter
CM-1500-C*	10862*	Clamp Meter

*Includes certificate of calibration

SPECIFICATIONS

Amperage Measurement	400.0, 1000A
Voltage Measurement	AC V: 400.0, 750V; DC V: 400.0, 1000V
Resistance	400.0Ω
Frequency	0.400kHz
Display	4000-count LCD display
Jaw Opening	2.0" (51 mm)
Measurement Category	Cat IV, 600V per IEC 61010-1; Cat III, 750V AC/1000V DC per UL 3111-1

1000A AC True RMS Clamp Meter



- True RMS for the most accurate measurement when harmonics are present
- AC amperage, AC/DC voltage, frequency and resistance measuring capability.
- Easy to read backlit display for use in low light conditions.
- Peak and data hold to capture measurement.
- MIN/MAX feature for added versatility.
- Analog bar graph to view quick changes.
- Audible continuity test
- Selectable Auto Off for longer battery life
- Accessories included: (1) 9 V battery, test leads, carrying case

CAT. NO.	UPC NO.	DESCRIPTION
CM-1350	07733	True RMS Clamp Meter
CM-1350-C*	10861*	True RMS Clamp Meter

*Includes certificate of calibration

SPECIFICATIONS

Amperage Measurement	0 - 400.0, 1000A
Voltage Measurement	AC V: 400.0, 750V; DC V: 400.0, 1000V
Resistance	0-400.0Ω
Frequency	0.400kHz
Display	4000-count LCD display
Jaw Opening	2.0" (51 mm)
Measurement Category	Cat IV, 600V per IEC 61010-1; Cat III, 750V AC/1000V DC per UL 3111-1

1000A AC Clamp Meter



- AC amperage, AC/DC voltage, frequency and resistance measuring capability.
- Easy to read backlit display for use in low light conditions.
- Peak and data hold to capture measurement.
- MIN/MAX feature for added versatility.
- Analog bar graph to view quick changes.
- Audible continuity test
- Selectable Auto Off for longer battery life
- Accessories included: (2) 1.5 V AA batteries, test leads, carrying case

CAT. NO.	UPC NO.	DESCRIPTION
CM-1300	07732	Clamp Meter
CM-1300-C*	10860*	Clamp Meter

*Includes certificate of calibration

SPECIFICATIONS

Amperage Measurement	0 - 400.0, 1000A
Voltage Measurement	AC V: 400.0, 750 V; DC V: 400.0, 1000V
Resistance	0-400.0Ω
Frequency	0.400kHz
Display	4000-count LCD display
Jaw Opening	2.0" (51 mm)
Measurement Category	Cat IV, 600V per IEC 61010-1; Cat III, 750V AC/1000V DC per UL 3111-1

600A AC/DC True RMS Clamp Meter



- True RMS for the most accurate measurement when harmonics are present
- AC amperage, AC/DC voltage, frequency and resistance measuring capability.
- Dual Hall sensor for DC amperage accuracy.
- Easy to read backlit display for use in low light conditions.
- Peak and data hold to capture measurement.
- MIN/MAX feature for added versatility.
- Analog bar graph to view quick changes.
- Auto zero for DCA measurement.
- Selectable Auto Off for longer battery life.
- Accessories included: (1) 9 V battery, test leads, carrying case

CAT. NO.	UPC NO.	DESCRIPTION
CM-950	07700	AC/DC True RMS Clamp Meter
CM-950-C*	10859*	AC/DC True RMS Clamp Meter

*Includes certificate of calibration

SPECIFICATIONS

Amperage Measurement	400.0, 600A
Voltage Measurement	400.0, 600V
Resistance	400.0Ω
Frequency	0.400kHz
Display	4000 count LCD display
Jaw Opening	1.38" (35 mm)
Measurement Category	Cat III, 600V per UL 3111-1

600A AC/DC Clamp Meter



- AC amperage, AC/DC voltage, frequency and resistance measuring capability.
- Dual Hall sensor for DC amperage accuracy.
- Easy to read backlit display for use in low light conditions.
- Peak and data hold to capture measurement.
- MIN/MAX feature for added versatility.
- Analog bar graph to view quick changes.
- Auto zero for DCA measurement.
- Selectable Auto Off for longer battery life.
- Accessories included: (2) 1.5 V AA batteries, test leads, carrying case

CAT. NO.	UPC NO.	DESCRIPTION
CM-900	07699	AC/DC Clamp Meter
CM-900-C*	10858*	AC/DC Clamp Meter

*Includes certificate of calibration

SPECIFICATIONS

Amperage Measurement	400.0, 600A
Voltage Measurement	400.0, 600V
Resistance	400.0Ω
Frequency	0.400kHz
Display	4000 count LCD display
Jaw Opening	1.38" (35 mm)
Measurement Category	Cat III, 600V per UL 3111-1

600A AC True RMS Clamp Meter



- True RMS for the most accurate measurement when harmonics are present
- AC amperage, AC/DC voltage, frequency and resistance measuring capability.
- Easy to read backlit display for use in low light conditions.
- Peak and data hold to capture measurement.
- MIN/MAX feature for added versatility.
- Analog bar graph to view quick changes.
- Selectable Auto Off for longer battery life.
- Accessories included: (1) 9V battery, test leads, carrying case.

CAT. NO.	UPC NO.	DESCRIPTION
CM-850	07666	True RMS Clamp Meter
CM-850-C*	10857*	True RMS Clamp Meter

*Includes certificate of calibration

SPECIFICATIONS

Amperage Measurement	AC – 200.0, 600A
Voltage Measurement	400.0, 600V
Resistance	400.0Ω
Frequency	0.400kHz
Display	4000 count LCD display
Jaw Opening	1.34" (34 mm)
Measurement Category	Cat III, 600V per UL 3111-1

600A AC Clamp Meter



- AC amperage, AC/DC voltage, frequency and resistance measuring capability.
- Easy to read backlit display for use in low light conditions.
- Peak and data hold to capture measurement.
- MIN/MAX feature for added versatility.
- Analog bar graph to view quick changes.
- Selectable Auto Off for longer battery life.
- Accessories included: (2) 1.5 V AA batteries, test leads, carrying case

CAT. NO.	UPC NO.	DESCRIPTION
CM-800	07664	Clamp Meter
CM-800-C*	10856*	Clamp Meter

*Includes certificate of calibration

SPECIFICATIONS

Amperage Measurement	AC – 200.0, 600A
Voltage Measurement	400.0, 600V
Resistance	400.0Ω
Frequency	0.400kHz
Display	4000 count LCD display
Jaw Opening	1.34" (34 mm)
Measurement Category	Cat III, 600V per UL 3111-1

AC Clamp-on Meter



CM-600 features:

- Both AC amperage and voltage measurement.
- Resistance measurement up to 2000Ω.
- Auto power off for longer battery life.

CAT. NO.	UPC NO.	DESCRIPTION
CM-600	07593	AC Clamp-on Meter
CM-600-C*	07625*	AC Clamp-on Meter

*Includes Certificate of Calibration

SPECIFICATIONS

Amperage Measurement	600A AC
Voltage Measurement	600V AC
Display	3-1/2-digit LCD, 2000-count
Resistance	2000Ω
Jaw Opening	1.38" (35 mm)
Measurement Category	Cat III, 600V per UL 3111-1

2-in-1 Clamp-on Meter



TL-400

- Measures to 600 volts AC and DC, and 300 amps AC.
- Data hold to capture important readings.
- Diode and continuity tests.

CAT. NO.	UPC NO.	DESCRIPTION
CM-400	07559	2-in1 Clamp-on Meter
CM-400-C*	07624*	2-in1 Clamp-on Meter
TL-400	07780	Replacement Test Lead Set

*Includes Certificate of Calibration

SPECIFICATIONS

AC Clamp (CM-400A)	
Amperage Measurement	0-300A
Jaw Opening	1.18" (30 mm)
Voltage Output	10mV output per 1 amp input
Measurement Category	Cat II, 600V per UL 3111-1
Multimeter (CM-400D)	
Display	3-3/4-digit LCD, 3200-count with 65-segment analog bar graph
Voltage	AC – 3.200, 32.00, 320.0, 600V; DC – 320.0mV; 3.200, 32.00, 320.0, 600V
Resistance	320.0Ω; 3.200, 32.00, 320.0kΩ; 3.200, 32.00MΩ
Measurement Category	Cat II, 600V per UL 3111-1

AC Clamp-on Meter



- AC current measuring capability up to 300A.
- Compact size, fits easily into a tool pouch.
- Rugged, molded grip for protection.
- Peak and data hold to capture important readings.

Accessories included: (1) AA battery, test leads, carrying case.

CAT. NO.	UPC NO.	DESCRIPTION
CM-310	07558	AC Clamp-on Meter

SPECIFICATIONS

Amperage Measurement	20.00, 200.0, 300A AC
Display	3-1/2-digit LCD, 2000-count
Jaw Opening	1.10" (28 mm)
Measurement Category	Cat III, 600V per UL 3111-1

600A Analog Clamp Meter



- Flexible 600A AC measurement and AC/DC voltage measurement.
- Resistance measurement up to 3k Ω with continuity beeper.
- Zero adjustment for accuracy.

Accessories included: (1) AA battery, test leads, carrying case.

CAT. NO.	UPC NO.	DESCRIPTION
AM-600	07654	600A Analog Clamp Meter

SPECIFICATIONS

Amperage Measurement	6, 15, 60, 150, 600A
Voltage Measurement	AC – 150, 600V; DC – 60, 300V
Resistance	0 - 3k Ω
Jaw Opening	1.65" (42 mm)
Measurement Category	Cat III, 600V per UL 3111-1

3000A Clamp-on Adapter



- Flexible clamp for easy "fishing" around a conductor.
- 3000A AC current measuring accessory.
- 24" long.
- Perfect for any multimeter that reads AC millivolts.

CAT. NO.	UPC NO.	DESCRIPTION
CMAF-3000	07533	3000A Clamp-on Adapter
CMAF-3000-C*	07608*	3000A Clamp-on Adapter

* Includes Certificate of Calibration

SPECIFICATIONS

Amperage Measurement	300, 3000A
Voltage Output	300A – 10mV output per 1 amp input; 3000A – 1mV output per 1 amp input
Clamp Length	24" (610 mm)
Measurement Category	Cat III, 1000V per IEC 61010-1

AC/DC Clamp-on Current Adapter



- AC/DC current measuring accessory.
- Measure up to 600 amps.
- Perfect for any multimeter that reads AC and DC millivolts.

CAT. NO.	UPC NO.	DESCRIPTION
CMA-60	07531	AC/DC Clamp-on Current Adapter
CMA-60-C*	07606*	AC/DC Clamp-on Current Adapter

* Includes Certificate of Calibration

SPECIFICATIONS

Amperage Measurement	0-600A
Voltage Output	100 amp range – 10mV output per 1 amp input; 600 amp range – 1mV output per 1 amp input
Jaw Opening	1.38" (35 mm)
Measurement Category	Cat III, 300V; Cat II, 600V per UL 3111-1

Clamp-on Current Adapter



- AC current measuring accessory.
- Measures up to 400A AC.
- Perfect for any multimeter that reads AC millivolts.

CAT. NO.	UPC NO.	DESCRIPTION
CMA-40	07530	Clamp-on Current Adapter
CMA-40-C*	07605*	Clamp-on Current Adapter

* Includes Certificate of Calibration

SPECIFICATIONS

Amperage Measurement	0.1-400A
Voltage Output	1mV per 1 amp input
Jaw Opening	1.18" (30 mm)
Measurement Category	Cat III, 300V; Cat II, 600V per UL 3111-1

93-30 Line Splitter (NEMA 5-15)



- For use with all models of clamp-on meters.
- Splits lines for independent testing with clamp-on meter.

CAT. NO.	UPC NO.	DESCRIPTION
93-30	34452	93-30 Line Splitter (NEMA 5-15)

SPECIFICATIONS

Size	4-5/8" x 1-3/4" (118 mm x 45 mm)
Weight	0.1 lb. (45g)

Circuit Tracer Application Guide

	CIRCUIT SEEKER 2011	OPEN CIRCUIT 2008	CLOSED CIRCUIT 38584	CLOSED CIRCUIT 2007	BREAKER FINDER 2012
Locate and identify breakers	•	• ¹	•	•	•
Locate and identify fuses	•	• ¹	•	•	•
Locate and identify blown fuses	•	•			•
Trace concealed wiring in walls and floors	•	•	•	•	•
Locate junction box relays and transformers	•	•	•	•	•
Locate switch gear	•	•	•	•	
Find shorts to ground	•	•	•	•	
Trace wires in PVC (nonmetallic conduit)	•	•	•	•	•
Find opens in a circuit	•	•			
Localize power and lighting panels	•	•	•	•	
Operate on energized circuits	•	• ¹	•	•	•
Operate on low voltage circuits	•	•	•	•	
Operate on high voltage circuits (600VAC)	•		•		
Operate on unenergized circuits	•	•	• ³	• ³	
Trace shielded cable	• ²	• ²			
Trace metal conduit	• ⁴		•	•	
Sort wires and trace coax cable	•	•			
Auto gain circuitry for improved accuracy	•				
AC voltage range	0-600V	0-480V	9-680V	9-300V	100-125V
DC voltage range	0-600V	0-480V	9-1000V	9-300V	
Distance – receiver from transmitter	300 ft.-4 mi. ⁵ (915 m-6.5 km)	3000-4000 ft. (915 m-1220 m)	3-4 miles (4.9 km-6.5 km)	3-4 miles (4.9 km-6.5 km)	300 ft. (91.4 m)
Transmitter battery	9V	9V	—	—	—
Receiver battery	9V	9V	9V	9V	9V

1. Will operate on energized circuits in limited applications. Will not locate and identify a particular breaker or fuse, but will identify breakers or fuses that share a common bus.
2. Good earth ground required. Attach one prong of transmitter to shield of the cable and the other prong to a good earth ground (such as water pipe, metal building frame, etc.).
3. For circuits without power, hook-up a 9V battery in series with the circuit and transmitter to power the line.
4. Closed circuit applications only.
5. Depends on application – shorter distances for open circuit tracing, longer distances for closed circuit tracing applications.

Power Finder Circuit Seeker™ Microprocessor-Based Circuit Tracer



Features:

- Traces concealed wiring, locates junction boxes, and finds breakers for live or dead circuits—no need for power interruption.
- Finds breaks in wires and shorts to ground.
- Incorporates auto gain circuitry for enhanced accuracy.
- Locates and identifies blown fuses.
- Supports transmitter-to-receiver distances up to 4 miles (6.5 km) for closed circuit tracing.
- Accessories included: Adapter lead, (2) 9V batteries, AC blades, instruction video, extension leads, carrying case, earphone/tube.

CAT. NO.	UPC NO.	DESCRIPTION
2011	00521	Power Finder Circuit Seeker™ Circuit Tracer
00523	00523	Transmitter
00524	00524	Receiver
00520	00520	Carrying Case
00562	00562	Adapter, 120V Female Receptacle with Clip
36929	36929	Receptacle Blades (2), AC
00522	00522	Test Lead Extension
00525	00525	Ear Phone/Tube
00624	00624	Instruction Video, MA-2858

SPECIFICATIONS

Capacity	0 to 600V AC/DC
Auto Off	Transmitter 30 min.; Receiver, selectable
Case Size	14" x 12" x 4" (355 mm x 305 mm x 102 mm)
Weight	3.56 lbs. (1618 g)
Distance	3000 ft. to 4 mi. (varies with application)

Power Finder™ Open Circuit Tracer



Features:

- Fast, simple, unenergized circuit tracing.
- Traces concealed wiring.
- Supports transmitter-to-receiver distances up to 4000 feet (1220 m).
- Accessories included: transmitter plug, (2) receptacle blades, extension leads, (2) 9V batteries, carrying case.

CAT. NO.	UPC NO.	DESCRIPTION
2008	38786	Power Finder™ Open Circuit Tracer
38787	38787	Receiver
38788	38788	Transmitter
36928	36928	Transmitter Plug
36929	36929	Receptacle Blades (2), AC
36930	36930	Test Lead
38789	38789	Plastic Case

SPECIFICATIONS

Capacity	0 to 480V AC/DC
Case Size	12" x 8-3/4" x 2" (305 mm x 222 mm x 51 mm)
Weight	2.4 lbs. (1089 g)
Distance	3000 ft. - 4000 ft. (915 m-1220 m)

Power Finder™ Closed Circuit Tracer



- Fast, simple energized circuit tracing.
- Traces circuits in nonmetallic conduit.
- Finds shorts to ground.
- Supports transmitter-to-receiver distances up to 4 miles (6.5 km).
- Accessories included: transmitter plug, (2) receptacle blades, test leads, (2) 9V batteries, carrying case.

CAT. NO.	UPC NO.	DESCRIPTION
2007	36924	Power Finder™ Closed Circuit Tracer
38584	38584	Power Finder™ Closed Circuit Tracer for High Voltage (same as above unit plus includes high voltage adapter)
38583	38583	High Voltage Adapter
36925	36925	Receiver*
36926	36926	Transmitter*
36928	36928	Transmitter Plug*
36929	36929	Receptacle Blades (2), AC*
36930	36930	Test Lead*
36927	36927	Plastic Case*

* 2007/36924 & 38584 both include these items

SPECIFICATIONS

Capacity	2007 – 9 to 300V AC/DC. 38584 – 9 to 680 VAC, 9 to 1000 VDC
Case Size	12" x 8-3/4" x 2" (305 mm x 222 mm x 51 mm)
Weight	2.4 lbs. (1089 g)
Distance	3000 ft. - 4000 ft. (915 m -1220 m)

Breaker Finder



- Easily trace energized wires and circuits in household wiring.
- Compact receiver unit features adjustable sensitivity for precise location of breaker, fuse, or wire.
- Added code window allows easy identification of the transmitter signal from power line noise.

CAT. NO.	UPC NO.	DESCRIPTION
2012	07578	Breaker Finder

SPECIFICATIONS

Transmitter	
Range	300 feet (91.4 m) in typical household wiring
Voltage Range	100-125VAC, 50/60Hz
Receiver	
Dual LED Indicators	For signal and low battery
7-segment LED Display	For indication of coded tracing signal
Overvoltage Protection	Category III, 150V per UL-3111-1

Locators Application Guide

	BLL-200	501	PE2003	508S	521	528
Trace concealed wiring in walls and floors	•	•		•		
Locate junction box relays and transformers	•					
Locate switch gear	•					
Find shorts to ground	•	•	• ³	•	• ¹	• ²
Trace wires in PVC (nonmetallic conduit)	•	•		•		
Find opens in a circuit	•	• ⁴	• ³	• ⁴	•	•
Localize power and lighting panels	•					
Operate on energized circuits	•	•	•	•	•	•
Operate on low voltage circuits	•	•	•	•	•	•
Operate on high voltage circuits (600VAC)	•					
Operate on unenergized circuits	•	•	•	•	•	•
Trace shielded cable	•	• ⁵		• ⁵	• ⁵	• ^{5,6}
Trace wires in metal conduit	•					
Sort wires and trace coax cable		• ⁷		• ⁷	• ⁶	• ⁶
Auto gain circuitry for improved accuracy	•					
AC voltage range	0-600V	0-240V	0-240V	0-240V	0-120V	0-50V
DC voltage range	0-300V	0-500V	0-400V	0-500V	0-250V	0-50V
Distance—receiver from transmitter	20 ft.	• ⁹	5000 ft.	1000 ft.	• ⁸	• ⁸
Transmitter battery	(4) AAA	(8) AA	12V rechargeable	(1) 9V	(2) 6V	(8) D
Receiver battery	(4) AA	(1) 9V	(1) 9V	(1) 9V	(1) 9V	(1) 9V

1. 100,000 ohms and less—both ends isolated from grounds.

2. 10,000 ohms and less

3. Does not locate the path—has to be predetermined and only in direct burial applications. 5,000,000 and less.

4. Clean Opens (All Conductors)

5. Transmitter connected to metallic shield.

6. Will trace coax providing the band is in place at the remote end—will disrupt service.

7. No sorting (high RF bleeds) can trace coax if transmitter connected to braid.

8. Low frequency locators need a "path to earth" (dirt), 5000 ft. on an open conductor and 2500 ft. on a metallic pipe at 3 ft. deep.

9. Direct Connection 3000 ft at 3 ft deep
 Inductive Coupler 1000 ft at 3 ft deep
 Inductive Antenna 700 ft at 3 ft deep

Buried Line Locator



CAT. NO.	UPC NO.	DESCRIPTION
BLL-200	07796	Buried Line Locator

- Lightweight and ergonomically-balanced for comfortable, low-stress operation.
- Microprocessor-based circuitry delivers increased accuracy – and features auto-gain control in all environments.
- Automatic signal boost makes it easy to trace lines, even those with very weak signals.
- Low battery indicator.
- Receiver may be used in active or passive mode.
- Traces 20 feet (6 m) underground and provides depth readings up to 15 feet (4.6 m).
- Receiver locates multiple passive frequencies with only a single switch setting – more convenient and time saving.
- Transmitter clamp fits conduit and pipe up to 3" trade size.

SPECIFICATIONS

Transmitter		Receiver	
Operating Voltage	0-600 VAC, 0-300 VDC	Depth Range	Measures: 0-15 ft. Traces: 0-20 ft.
Current	13mA (open line), 150mA (live or shorted line)	Depth Resolution	± (10% reading + 0.2 ft.) 0.1 ft. increments
Frequency	33.3kHz	Passive Trace Frequency	12Hz-24kHz
Operating Temperature	0°F to 120°F (-17°C to 50°C)	Operating Temperature	0°F to 120°F (-17°C to 50°C)
Size	7.5" x 4" x 2.1" (190.5 mm x 101.6 mm x 53 mm)	Size	4.1" x 8.5" x 38" (104.1 mm x 215.9 mm x 965.2 mm)
Power	6 VDC (4 AA batteries)	Power	6 VDC (4 AA batteries)
Weight	15 oz. (425 g) (with batteries and clamp)	Weight	1 lb. 12 oz. (794 g)

Tracker II™



Headset (accessory)
 Cat. No. HS-1
 UPC No. 08695

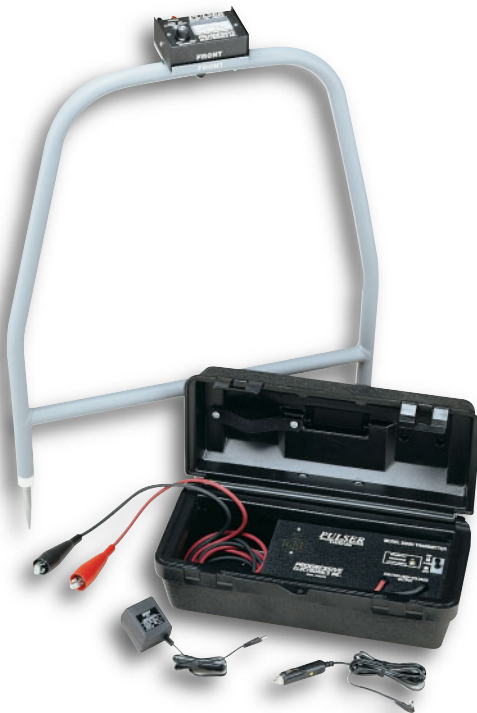
CAT. NO.	UPC NO.	DESCRIPTION
501	08662	Tracker II™

- High frequency transmitter provides range up to 4000 feet (1219 m) and depths to 7 feet (2 m).
- The transmitter offers three methods of connection: direct, inductive coupler, or inductive antenna.
- Inductive coupler clamps around the wire or pipe for use on active lines or where isolating the line is not an option.
- Inductive antenna is built into the case housing and allows the transmitter to be placed on the ground over the wire path to radiate a signal down onto the conductor.
- 32" (813 mm) lightweight receiver provides both audible and visual indications of signal strength for accurate identification.
- Transmitter output and receiver sensitivity are both fully adjustable for maximum accuracy.
- Includes transmitter assembly, receiver assembly, inductive coupler (clamp), inductive antenna (built-in), two 8 foot (2.4 m) test leads with heavy-duty alligator clips, and a durable polyethylene case.
- Optional headset is available for use in high traffic areas or other noisy environments.
- 1 year warranty.

SPECIFICATIONS

Power Requirements	Transmitter – (8) AA batteries; Receiver – (1) 9V battery
Battery Life	Transmitter – 30 hours nominal; Receiver – 10 hours nominal
Transmitter Frequency	447.5kHz
Transmitter Power	40Vp-p (140mW) maximum
Voltage Protection	240VAC/500VDC
Automatic Shut Off	90 Min. Transmitter and Receiver
Construction	Transmitter/Receiver – powder coated aluminum, Case – vacuum formed polyethylene
Dimensions	Transmitter – 4.25" x 3" x 3.25"; Receiver – 32" x 2.75" x 4"; Case – 33.5" x 8.25" x 3.75"
Weight	6.7 lbs. (complete kit)

Pulser Fault Locator



- Portable transmitter “pulses” a high voltage signal that radiates into the earth at the location of the faults.
- With the A-frame mounted receiver, a visual analog meter points the way to the source of the voltage.
- Multiple faults on a single wire can be identified indicating the need to replace instead of repairing.
- Extra long test leads feature heavy-duty alligator clips for use on multiple cable types.
- Includes a rechargeable transmitter, receiver, A-frame, ground stake, 120V AC charger, 12 volt DC (cigarette lighter) adapter, and complete operating instructions.
- Battery-operated (1) 12V and (1) 9V included.
- 1-year warranty.

CAT. NO.	UPC NO.	DESCRIPTION
PE2003	08666	Pulser

SPECIFICATIONS

Power Requirements	Transmitter: (1) 12V rechargeable battery; Receiver: (1) 9V battery
Battery Life	Transmitter: 23 hours per charge; Receiver: 200 hours
Transmitter Power	2400VDC peak
Voltage Protection	240VAC/400VDC
Construction	Transmitter – aluminum housing in polyethylene case; Receiver – powder coated aluminum
Dimensions	Transmitter – 17" x 8.5" x 6.5" (421 mm x 215 mm x 160 mm) in case Receiver – 33.5 x 21.75" x 3.25" (840 mm x 550 x 8 mm) on A-Frame
Weight	12.5 lbs. complete

Wire Finder/Mini Locator



- Traces energized or degenerated wires in walls and drop ceilings.
- Provides reliable results on buried cables to depths of 3' (1 m) and lengths up to 1000' (308 m).
- Determines the approximate depth of the wire before digging.
- Compact design.
- Easy to understand operations.
- Fully adjustable transmitter and receiver for accurate locating.
- Quick change test leads for use in any industry, even international power outlets.
- Voltage protection to allow use on live AC circuits.
- Automatic shut-off to prevent accidental battery discharge.
- Housed in a durable, molded carrying case with a quick reference operation guide on the inside of the lid.
- Battery-operated: (2) 9V batteries included.
- 1-year warranty.

CAT. NO.	UPC NO.	DESCRIPTION
508S	08678	Wire Finder/Mini Locator

SPECIFICATIONS

Power Requirements	(1) 9V each (transmitter and receiver, included)
Battery Life	Transmitter 35 hours nominal; Receiver 20 hours nominal
Transmitter Frequency	447.5kHz
Transmitter Power	9Vp-p (11mW)
Voltage Protection	240VAC/500VDC
Construction	Transmitter/Receiver – high impact ABS plastic, Case – vacuum formed polyethylene
Dimensions	Transmitter – 4" x 2.3" x 1", Receiver – 6" x 2.35" x 1", Case – 9.5" x 8" x 3"
Weight	2.6 lbs.

Wire and Valve Locator



- Adjustable transmit power allows you to select the best signal for maximum performance.
- Transmitter's high power output offers extended range and use on higher resistance wire paths that other locators can't touch.
- Receiver provides both audible and visual indications of signal strength.
- Pistol-style design of the receiver makes it easy for you to move along quickly to locate even the longest wire path.
- Rugged headphones block ambient noise and improve "feel" for the signal.
- Includes transmitter, receiver, headset, ground stake, and complete instructions.
- Battery-operated: (2) 6V lanterns and (1) 9V included.
- 1-year warranty.

CAT. NO.	UPC NO.	DESCRIPTION
521	08663	Wire and Valve Locator

SPECIFICATIONS

Power Requirements	Transmitter: (2) 6V lantern; Receiver: (1) 9V battery
Battery Life	transmitter – 30 hours nominal, receiver – 100 hours nominal
Transmitter Frequency	1748Hz
Transmitter Power	750Vp-p 285Vrms
Voltage Protection	120VAC/250VDC
Construction	Powder coated aluminum housing in polyethylene case
Case Dimensions	17.375" x 10 x 8.75"
Weight	12 lbs. complete

Wire And Valve Locator



- Connected to a buried wire, the unit supplies audible indications to identify the path and approximate depth of the wire.
- Easy to understand instructions make it possible for first time users to quickly locate buried valves and wire breaks.
- "One step" transmitter automatically adjusts signal output to the most effective level while the compact receiver allows you to adjust the volume (gain) to suit the environment.
- Battery-operated and completely self-contained for use at remote locations.
- Both the transmitter and receiver include automatic shut-off to prevent battery drain.
- Includes transmitter, receiver, ground stake, instruction manual, and quick reference instruction label inside case.
- 1-year warranty.

CAT. NO.	UPC NO.	DESCRIPTION
528	08664	Wire and Valve Locator

SPECIFICATIONS

Power Requirements	Transmitter – (8) D batteries; Receiver – (1) 9V battery
Battery Life	Transmitter – 50 hours nominal, Receiver – 50 hours nominal
Transmitter Frequency	2900 Hz
Transmitter Power	300Vp-p, 100Vrms maximum (20-30mA rms load matching current)
Voltage Protection	120VAC/250VDC
Automatic Shut-off	Transmitter – 100 min., receiver – 90 min.
Construction	Transmitter – powder coated aluminum in polyethylene case; receiver – ABS plastic
Dimensions	Transmitter – 13.5" x 9.25" x 3.25" (in case), receiver – 6.25" x 2.375" x 1" with 5' antenna
Weight	5.6 lbs. complete with batteries

Model 24 Station Master



- Battery-powered.
- Activate solenoids at the valve.
- Save steps during system installs and service.
- Safely holds a working solenoid open for over three hours.
- Two foot test leads come equipped with heavy-duty alligator clips that feature a piercing pin allowing you to connect the unit without cutting or stripping the wires.
- 1-year warranty.

CAT. NO.	UPC NO.	DESCRIPTION
24	08655	Station Master

SPECIFICATIONS

Power Requirements	(2) 9V batteries
Battery Life	3 hours continuous
Voltage Output	36VDC peak, 12V sustained
Voltage Protection	50V AC or DC
Construction	High impact ABS plastic
Dimensions	2.3" x 1.5" x 3.4" (60 mm x 40 mm x 8.5 mm)
Weight	8.3 oz. with batteries

Inspector GFCI and Circuit Tester


 calibration
 service
 available


- Allows instant testing of GFCI receptacles or GFCI circuit breaker protected circuits.
- Indicates whether a GFCI will trip at 3, 5, 7, or 10mA.
- Checks 120VAC grounded outlets for correct/incorrect wiring.
- LED indicators signal correct wiring, open ground, open neutral, open hot, hot/ground reversed, and hot/neutral reversed.

CAT. NO.	UPC NO.	DESCRIPTION
5708i	34524	Inspector GFCI and Circuit Tester
5708i-C*	07641*	Inspector GFCI and Circuit Tester

* Includes Certificate of Calibration

SPECIFICATIONS

Capacity	120VAC, 3-wire systems	
Test Duration	Current (mA)	Time Duration (Sec.)
	3	15
	5	5
	6	4
	7	3
	10	2
Size	5-3/8" x 2-5/8" x 1-3/4" (137 mm x 67 mm x 44 mm)	
Cord Length	16" (406 mm)	
Weight	0.5 lb. (227 g)	
Accuracy	Current: 10% at nominal voltage; time: 1.5%	
Measurement Category	Cat II, 150V per UL 3111-1	

GFCI and Circuit Tester



- Allows instant testing of GFCI receptacles or GFCI circuit breaker protected circuits.
- Checks 120VAC grounded outlets for correct/incorrect wiring.
- LED indicators signal correct wiring, open ground, open neutral, open hot, hot/ground reversed, and hot/neutral reversed.

CAT. NO.	UPC NO.	DESCRIPTION
5708	34523	GFCI and Circuit Tester
5708-C*	07640*	GFCI and Circuit Tester

* Includes Certificate of Calibration

SPECIFICATIONS

Capacity	120VAC, 3-wire systems
Time	4-second interval between mA test impulses; 200 MS pulse duration
Size	5-3/8" x 2-5/8" x 1-3/4" (137 mm x 67 mm x 44 mm)
Cord length	16" (406 mm)
Weight	0.5 lb. (227g)
Accuracy	Current: 10% at nominal voltage; Time: approx. 12%
Measurement Category	Cat II, 150V per UL 3111-1

Circuit Testers



- Just plug it in for instant 120VAC grounded outlets correct/incorrect wiring indication.
- Three neon indicators show correct wiring, open ground, open neutral, open hot, hot/ground reversed, and hot/neutral reversed.
- 93-10-GFI also tests GFCI receptacles or GFCI circuit breaker protected circuits.

CAT. NO.	UPC NO.	DESCRIPTION
93-10-GFI	07577	GFCI Circuit Tester
93-10	00582	Circuit Tester

SPECIFICATIONS

Capacity	120VAC
Size	3-3/4" x 1-1/2" x 1" (95 mm x 38 mm x 25 mm)
Weight	0.1 lb. (45g)

Insulation Testing Comparison Chart

		5990	5882	5880	5778
Test Voltage	250V		•		•
	500V	•	•	•	•
	1000V	•	•	•	•
	2500V	•			
	5000V	•			
Range	250V		50k-2000MΩ		0-25MΩ
	500V	500k-500GΩ	100k-2000MΩ	100k-2000MΩ	0-50MΩ
	1000V	700k-500GΩ	200k-2000MΩ	200k-2000MΩ	0-100MΩ
	2500V	5M-500GΩ			
	5000V	20M-500GΩ			
Continuity			0-20Ω	0-20Ω	
Resistance			0-400kΩ	0-400kΩ	
Display Type		Analog	Digital	Digital	Analog
Backlit			•	•	
Count			4000	4000	
Analog bar graph			•	•	
UL 3111-1 listed			•	•	
Measurement category		III, 600V	II, 300V	II, 300V	
CE		•	•	•	

5kV Megohmmeter



- Four test voltages: 500V, 1000V, 2500V, and 5000V.
- Resistance measurement range up to 500GΩ.
- Extra-large analog display for easy viewing.
- Accessories included: (4) 1.5V D batteries, integrated carrying case, test leads, snap-on test lead pouch.

CAT. NO.	UPC NO.	DESCRIPTION
5990	07665	5kV Megohmmeter

SPECIFICATIONS

Insulation Tests	
Test Voltage	500, 1000, 2500, 5000V
Range	500k to 500GΩ
Voltage Test Range	600V AC/DC
Measurement Category	Cat III, 600V per IEC 61010-1

Digital/Analog Megohmmeter



CAT. NO.	UPC NO.	DESCRIPTION
5882	07573	Digital/Analog Multimeter
5882-C*	07639*	Digital/Analog Multimeter
5880	07572	Digital/Analog Multimeter
5880-C*	07638*	Digital/Analog Multimeter
5883	07591	Remote Probe

* Includes Certificate of Calibration

5880 features:

- Autoranging AC/DC default voltmeter with test inhibitor and warnings for enhanced user safety.
- Extra large digital display with backlight and analog bar graph.
- Weather resistant against dust and water to IP44.
- Multiple test voltage ranges.
- Measure up to 2000MΩ resistance.

5882 adds:

- Tests three voltage ranges: 250, 500, and 1000V.
- Timer function for dielectric absorption and polarization index measurements.
- Accessories included: (6) 1.5V AA batteries, test leads, case.

SPECIFICATIONS

Insulation Tests

Test Voltage	5882: 250, 500, 1000V
	5880: 500, 1000V
Range	250V: 50k – 2000MΩ
	500V: 1000k – 2000MΩ
	1000V: 200k – 2000MΩ

Automatic Discharge

Continuity Range	0-20Ω
Resistance Range	0-400kΩ
Voltage Test Range	0-600V AC/DC
Display	4000-count, backlit 34-segment analog bar graph
Measurement Category	Cat II, 300V per UL 3111-1

Manual-Crank Megohmmeter



- Compact, field ready – does not require batteries or AC power.
- Hand crank meter designed for non-destructive insulation tests of electrical installations, machines, equipment, transformers and electric motors.
- Features (3) test voltages and (3) measuring ranges.
- Leather case and leads included.

CAT. NO.	UPC NO.	DESCRIPTION
5778	34555	Manual-Crank Megohmmeter
5778-C*	07636*	Manual-Crank Megohmmeter
5778TL	34727	6' (1.83 m) Ext. Leads with Alligator Clamps

* Includes Certificate of Calibration

SPECIFICATIONS

Capacity	Megohm Ranges: 25, 50, 100 DC Voltage Ranges: 250, 500, 1000V
-----------------	--

Noncontact Phase Sequence Indicator



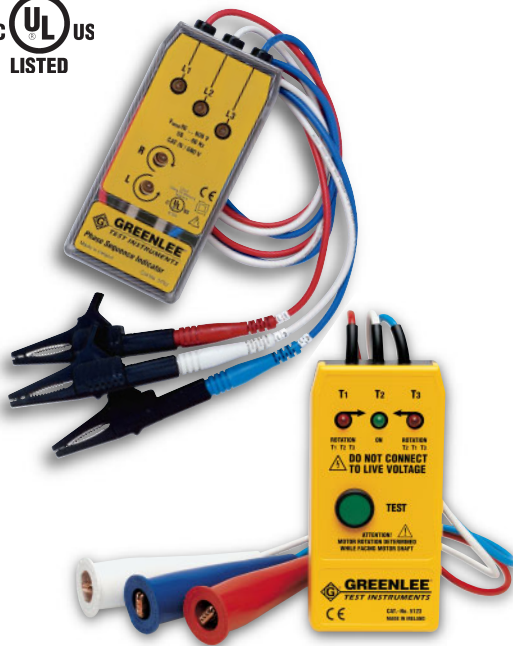
- Noncontact detection of phase sequence.
- Self-adjusting to correct phase if line frequency varies.
- Auto shutoff for maximum battery life.
- Proximity sensor means safe, noncontact sequence.
- Accessories included: (1) 9V battery, case.

CAT. NO.	UPC NO.	DESCRIPTION
5712	07575	Noncontact Phase Sequence Indicator

SPECIFICATIONS

Frequency Required	50/60Hz
Phase Lock	Holds phase for 12 seconds from last indications.
Overvoltage Protection	IEC 61010-1, 600V CAT III

Motor Rotation and Phase Sequence Indicator Kit



- Assists in correct motor installation by identifying the phases of a three-phase circuit and the rotation of an unenergized motor to prevent damage to motor or electrical system.
- Identifies L1, L2, L3 phases and motor leads and indicates rotation of the motor before installation.
- Easy clockwise and counterclockwise indication.
- Case included.

CAT. NO.	UPC NO.	DESCRIPTION
5779	07576	Motor Rotation and Phase Sequence Indicator Kit
TC-20	07535	Carry Case

SPECIFICATIONS

Phase Sequence Indicator (Cat. No. 5702)

Overvoltage Protection IEC 61010-1 Category III, 600V

Motor Rotation Indicator (Cat. No. 5123)

Two LEDs indicate motor rotation

Phase Sequence Indicator



- Identifies L1, L2, L3 phases and indicates rotation of the motor before installation.
- Clockwise and counterclockwise indication via neon lamps.

CAT. NO.	UPC NO.	DESCRIPTION
5702	07574	Phase Sequence Indicator

SPECIFICATIONS

Live Phase Indicators	Three neon lamps
Motor rotation Indicators	Two neon lamps
Measurement Category	Cat III, 600V per UL 3111-1

Motor Rotation Indicator



- Tests unenergized 3 phase motor to determine phase sequence for desired rotation.

CAT. NO.	UPC NO.	DESCRIPTION
5123	34514	Motor Rotation Indicator

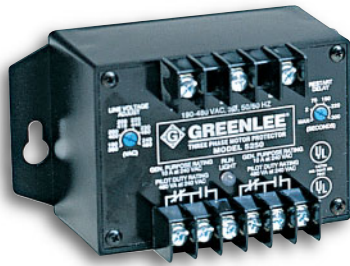
SPECIFICATIONS

Indicators	Two LEDs
-------------------	----------



Do not use Motor Rotation Indicator on live circuits.

Adjustable Time-Delay Restart Motor Protectors



- Monitor 3-phase power and help prevent damage to motors caused by undervoltage, phase imbalance, phase loss and phase reversal conditions.
- Adjustable voltage range.
- Microprocessor controlled.
- Adjustable time delay reset: manual and from 2 to 300 seconds.

CAT. NO.	UPC NO.	DESCRIPTION
5250	34960	Three-Phase Motor Protector with adjustable time delay restart

SPECIFICATIONS

Capacity	Adjustable voltage range – 190 to 480VAC
DPDT Relay	Pilot duty – 480VA at 240V AC General purpose – 10A at 240V AC
Size	2.2" x 4" x 2.8" (56 mm x 102 mm x 71 mm)
Weight	14 oz. (397g)

Three-Phase Motor Protector



- Monitor 3-phase power and help prevent damage to motors caused by undervoltage, phase imbalance, phase loss and phase reversal conditions.
- Adjustable voltage range.
- Microprocessor controlled.

CAT. NO.	UPC NO.	DESCRIPTION
5102	34958	Three-Phase Motor Protector

SPECIFICATIONS

Capacity	Adjustable voltage range – 190-480 VAC
SPDT Relay	Pilot duty – 480VA at 240V AC General purpose – 10A at 240V AC
Size	2.2" x 4" x 2.8" (56 mm x 102 mm x 71 mm)
Weight	9 oz. (397 g)

Plug-in Motor Protector



- Three-phase protector helps prevent damage to motors caused by undervoltage, phase loss, phase imbalance and phase reversal conditions.
- Adjustable voltage range.
- Microprocessor controlled.
- Includes socket (5201SK).

CAT. NO.	UPC NO.	DESCRIPTION
5201	34959	Plug-in Motor Protector
5201SK	30044	Octal 8 Pin Socket

SPECIFICATIONS

Capacity	Adjustable voltage range – 190 to 480 VAC
SPDT Relay	480VA at 120/240V AC
Size	3.5" x 2.4" x 1.8" (89 mm x 61 mm x 46 mm)
Weight	9 oz. (255 g)

Deluxe Temperature Gun



- Safe, noncontact temperature measurement.
- Optical resolution 50:1 at focus point.
- Programmable High and Low Alarm limits.
- Circular laser sighting system.
- Separate display for Min, Max, Dif, or Avg reading.
- Logs up to 12 temperature readings.
- Convenient 7 second display hold.
- Recalls last reading for easy comparisons.
- Display temperatures in either Celsius or Fahrenheit.
- Optional remote contact probe. (Cat. No. 07130)
- (1) 9V battery, carry case and wrist strap included.

CAT. NO.	UPC NO.	DESCRIPTION
TG-350	07133	Deluxe Temperature Gun

SPECIFICATIONS

Target Temperature Range -32 to 760°C (-25 to 1400°F)

Accuracy vs. Target Temperature @23°C (73°F) Ambient Temperature

Above 73°F (23°C): ±1% or ±2°F (±1°C), whichever is greater

0°F to 73°F (-18° to 23°C): ±3°F (±2°C)

-15°F to 0°F (-26° to -18°C): ±4°F (±2.5°C)

-25°F to -15°F (-32° to -26°C): ±5°F (±3°C)

Repeatability < ±0.5% or < ±2°F (1°C), whichever is greater

Ambient/Operating Temperature Range 32°F to 120°F (0°C to 50°C)

Relative Humidity 10% to 95%, noncondensing at <86°F (30°C)

Response Time 500mSec, 95% response

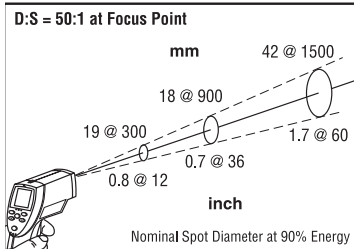
Spectral Response 8-14µm

Emissivity 0.1 to 1.0 digitally adjustable

Temperature Display Resolution 0.1°F or 0.1°C

Weight 11 oz. (320 g)

TG-350



Hand-Held Thermometer



- Safe, noncontact temperature measurement with laser aim.
- Convenient, seven-second display hold.
- Reads in either Celsius or Fahrenheit, changes scales instantly.
- Accurate, easy laser targeting makes it quick and easy to aim precisely, may be turned off when not needed to conserve battery.
- (1) 9V battery included.

CAT. NO.	UPC NO.	DESCRIPTION
THH-500	07583	Hand-Held Thermometer

SPECIFICATIONS

Response Time 500mS, 95% response

Target Temperature Range 0°F to 500°F (-18°C to 260°C)

Spectral Response 7-18µm

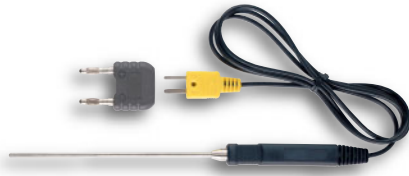
Emissivity Preset at 0.95

Ambient/Operating Temperature Range 32°F to 122°F (0°C to 50°C)

Relative Humidity 0%-95%, noncondensing

Accuracy
 212°F to 500°F (100° to 260° C) ± 2%
 77°F to 212°F (25° to 100°C) ± 3°F (± 2°C)
 30°F to 77°F (-1° to 25°C) ± 5°F (± 3°C)
 0°F to 30°F (-18° to 1°C) ± 7°F (± 4°C)

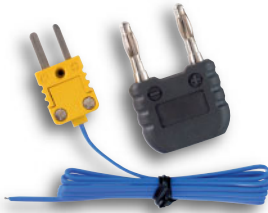
Immersion Temperature Probe



- Suitable for liquids and gels.
- Measurement range: -40°F to 1472°F (-40°C to 800°C).
- Probe length: 4.72" ± 0.2" (120 mm ± 5 mm).
- Accuracy: ± 2.2°C (4°F) or 0.75%, whichever is greater.
- Type K thermocouple.

CAT. NO.	UPC NO.	DESCRIPTION
TPI-1	06569	Immersion Temperature Probe

Bead Temperature Probe



- For surface and air/gas temperature measurement.
- Not suitable for liquids.
- Measurement range: -40°F to 399°F (-40°C to 204°C).
- Probe length: 39.4" ± 0.2" (1 m ± 5 mm).
- Type K thermocouple.

CAT. NO.	UPC NO.	DESCRIPTION
TPB	07592	Bead Temperature Probe

Surface Temperature Probe



- For flat or slightly convex surfaces, perfect for measurement of hot rollers and plates.
- Measurement range: -40°F to 932°F (-40°C to 500°C).
- Probe length: 4.72" ± 0.2" (120 mm ± 5 mm).
- Accuracy: ± 2.2°C (4°F) or 0.75%, whichever is greater.
- Type K thermocouple.

CAT. NO.	UPC NO.	DESCRIPTION
TPSFC	06570	Surface Temperature Probe

Sound Level Meter



- Noise measurement adapted to dB(A) weighting.
- Compact and light, easy to take to any site.
- Accessories included: (1) 9V battery.

CAT. NO.	UPC NO.	DESCRIPTION
93-20	34451	Sound Level Meter

SPECIFICATIONS

Capacity	Low – 35 to 80dB; High – 75 to 120dB
Audible Range	"A" Scale
Frequency	20-20,000Hz
Weight	8 oz. (227g)
Size	6-3/8" x 2-1/2" x 1-1/2" (162 mm x 64 mm x 38 mm)

Digital Light Meter



- Measures incandescent, fluorescent, metal halide, high-pressure sodium, and halogen lamp output.
- Color- and cosine-corrected for enhanced accuracy.
- Measures up to 50,000 lux.
- Peak and data hold means no lost measurements.
- (1) 9V battery and carry case included.

CAT. NO.	UPC NO.	DESCRIPTION
93-172	06060	Digital Light Meter
93-172-C*	07084*	Digital Light Meter
06200	06200	Carry Case
06061	06061	Sensor
06083	06083	Sensor Cover

* Includes Certificate of Calibration

SPECIFICATIONS

Ranges

Foot Candles 0.01-5,000Fc (20/200/2,000/5,000)

Lux 0.1-50,000 lux (200/2,000, 20,000/50,000)

Accuracy

Incandescent Light Source ± 4%

Other Light Sources ± 7%

Temperature Range 0° to 40° C (32° to 104° F)

Sampling Rate 2.5 times per second

Gas Lamp Tester



- Test most fluorescent lamps, low pressure sodium vapor, high pressure sodium discharge lamps, neon tubes, mercury vapor and metal halide lamps. Not for use with energy saving fluorescent lamps.
- Checks starters, resistors, ignitors, capacitors, photo cells and non-electronic ballasts.
- Indicates AC/DC voltage and continuity.
- Includes detachable antenna, batteries, leads, probes, clamps and holster.

CAT. NO.	UPC NO.	DESCRIPTION
5715	34529	Gas Lamp Tester
5713	34528	Holster
35450	35450	Replacement Battery Door
5710	34525	Antenna
5786	34574	Small Alligator Clamps (2)
5711	34526	Probe & Leads Set
5781	34557	36" (914 mm) Extension Leads (2)
5783	34556	Push-on Probes (2)

SPECIFICATIONS

Capacity Voltage – up to 500 VAC & VDC; Continuity – to 300 kΩ

Size 6" x 2-3/4" x 1-3/4" (152 x 70 x 45 mm); Antenna – 27" (686 mm)

Weight 2.4 lbs. (1.1 kg) **Batteries** 2 – 9V, included

Lamp Tester



- Tests HID and fluorescent lamps.
- Live conductor sensing.
- Compact, rugged housing with carry case.

CAT. NO.	UPC NO.	DESCRIPTION
LT-100	07541	Lamp Tester
TC-10	07534	Carry case

SPECIFICATIONS

Live Conductor Indication 60-250VAC, 40-60Hz

Continuity Verification 0-5MΩ (test current: <7μA)

Lamp Tester Voltage 3kV/160kHz (test current:<200μA)

Measurement Category Cat II, 250V per UL 31111-1

Cable Length Meters



These meters feature:

- Direct read length measurements up to 1999 ft. (609.3 m) in 12 sizes of copper or aluminum insulated cable up to 500 kcmil (240 mm²). 3-1/2 digit LCD read-out.
- Calibration coil included for compensation of temperature coefficients.

CAT. NO.	UPC NO.	DESCRIPTION
2004	36186	Cable Length Meter – Measurements in Feet
2004M	36347	Cable Length Meter – Measurements in Meters for AWG and kcmil cable sizes
2004E	36481	Cable Length Meter – Measurements in Meters for mm ² cable sizes
2004CA	36251	Calibration Coil
2006	34469	Clamps
36187	36187	Leather Case
34916	34916	Canvas Accessory Bag

Includes leather case, canvas accessory bag, batteries and large clamps.

SPECIFICATIONS

Capacity	2004 – 10 AWG - 500 kcmil 2004M – 10 AWG - 500 kcmil 2004E – 1.5 - 240 mm ²
Cable Size – Cross Section	2004 & 2004M – 10, 8, 6, 4, 2, 1/0, 2/0, 3/0, 4/0 AWG; 250, 350 & 500 kcmil 2004E – 1.5, 2.5, 4, 6, 10, 16, 25, 50, 70, 120, 185 & 240 mm ²
Measuring Length	15 feet through 1999 feet in 1 ft increments
Accuracy	Dependent on dimensional stability & purity of wire, typically 2%.
Size	5-3/4" x 3" x 2-1/2" (146 mm x 76 mm x 64 mm)
Weight	.8 lb. (.36 kg)
Batteries	2 – 9V, included

Cable Length Meters



Both meters feature:

- Easy to operate, calibrate and set for cable being measured. 4-1/2 digit LCD read-out.
- Calibration coil included for compensation of temperature coefficients.

CAT. NO.	UPC NO.	DESCRIPTION
2003	34466	Cable Length Meter – Measurements in Feet
2003M	35441	Cable Length Meter – Measurements in Meters
2003BC	34718	Battery Charger
2003CA	34465	Calibration Coil
2006	34469	Clamps
2003C	34717	Leather Case
34916	34916	Canvas Accessory Bag

Includes leather case, canvas accessory bag, built-in battery, battery charger and large clamps.

SPECIFICATIONS

Capacity	16 AWG - 1000 kcmil, insulated cable direct; 2000 kcmil with conversion chart
Cable Size – Cross Section	16, 14, 12, 10, 8, 6, 4, 3, 2, 1, 1/0, 2/0, 3/0, 4/0 AWG; 250, 300, 350, 400, 500, 600, 700, 750, 1000 kcmil (Conversion chart for 4 additional sizes.) 2003M – 1.5 to 500 mm ²
Measuring Length	
2003	15 feet through 1999.9 feet in 1/10 ft increments; 2000 to 19999 feet in 1 ft increments
2003M	5 meters through 1999.9 meters in 1/10 meter increments; 2000 to 6000 meters in 1 meter increments
Accuracy	Dependent on dimensional stability & purity of wire, typically 2%.
Size	8" x 4-11/16" x 4-3/8" (203 mm x 119 mm x 111 mm)
Weight	4 lbs. (1.81 kg)

Wire Sorter



- Easy, one-person sorting of up to 10 wires at a time.
- Also indicates opens, shorts to ground, conduit or other wires.
- LED read-out on Identifier shows number between 0 and 9.
- LED indicator on Marker lights if voltage is present.
- For use on unenergized circuits only.
- Complete kit includes, Marker unit, Identifier unit, leads, battery and padded carrying case.
- Order 5775TD/34553 Wire Marker Tape for use with this unit.

SPECIFICATIONS

Capacity	Sorts 10 Wires up to 3 miles (4.8 km) max. (dependent on conductor diameter)
Sizes	Marker – 4-1/2" x 1-15/16" x 1" (114 x 49 x 25 mm) Identifier – 5-13/16" x 3" x 1-5/8" (148 x 76 x 41 mm) Case – 14" x 11-3/4" x 3-1/4" (356 x 300 x 83 mm)
Conductor Resistance	820Ω max.
Voltage on Marker	100 VDC or 70 VAC max. (Marker LED will light if voltage is present. Sorter should be used only on unenergized circuits.)
Weight	3 lbs. (1.36 kg)
Battery	1 – 9V, included

CAT. NO.	UPC NO.	DESCRIPTION
5775VS	34542	Wire Sorter
5775TL	34871	Test Leads
5775VSC	35397	Padded Plastic Case

Wire Marker Tape



5775TD
 Dispenser –
 10 rolls of Tape, Numbers 0-9.

- Compact dispenser holds 10 rolls of marker tape.
- Each roll contains 75 number strips.
- Pressure sensitive numbers stick to wire.
- Number refills available.
- Use with 5775VS/34542 Wire Sorter.

CAT. NO.	UPC NO.	DESCRIPTION
5775TD	34553	Wire Marker Tape

SPECIFICATIONS

Includes	10 rolls of tape, one each numbers 0-9.
-----------------	---

Electrical Maintenance Kit



93-602 Digital Multimeter features:

- Measures AC/DC voltage, DC current, and resistance.
- Diode, hFE, and continuity tests expand capability.
- Polarity, low battery, and overload indicators for added convenience.
- Accessories included: (1) 9V battery, test leads, carry case.

2012 Breaker Finder features:

- Compact receiver unit features adjustable sensitivity for precise location of breaker, fuse, or wire.
- Added code window allows easy identification of the transmitter signal from power line noise.
- Accessories included: (1) 9V battery, carry case.

93-10-GFI GFCI Circuit Tester:

- Three neon indicators show correct wiring, open ground, open neutral, open hot, hot/ground reversed, and hot/neutral reversed.

CAT. NO.	UPC NO.	DESCRIPTION
TKR-10	07707	Electrical Maintenance Kit

SPECIFICATIONS

93-602 Digital Multimeter

Voltage Ranges

ACV 200.0, 600V

DCV 2.000, 20.00, 200.0, 600V

DC Current 2.000, 20.00, 200.0mA

Resistance 200.0Ω; 2.000, 20.00, 200.00kΩ; 2.000MΩ

Overvoltage Protection IEC 61010-1 Category II, 600V

2012 Breaker Finder Transmitter

Range 300 feet (91.4 meters) in typical household wiring

Voltage Range 100-125VAC, 50-60Hz

Overvoltage Protection IEC 61010-1 Category III, 150V

Receiver

Dual LED Indicators For signal and low battery

7-segment LED Display For indication of coded tracing signal

93-10-GFI GFCI Circuit Tester

Capacity 120VAC

Size 3-3/4" x 1-1/2" x 1" (95 mm x 38 mm x 25 mm)

Weight 0.1lb (45 g)

Deluxe Electrical Test Lead Kit



- Kit contains: (2) modular test probes with sharp stainless steel tip, (2) 48" (1.2 m) flexible test lead (TTLK) with straight and right angle meter plugs, two each of Grabber clips with alligator tips (TGA-2), pincer tips (TPG-2) and hook tips (TGH-2), large alligator clips (TLA-2), and a nylon carrying case.
- Measurement category: Probes, Cat III, 1000V per UL-3111; Cat IV, 600V per IEC 61010; Large alligator clips, Cat IV, 600V per IEC 61010; Other components, Cat III, 1000V per UL-3111, Cat IV, 1000V per IEC 61010.
- Maximum current 10 amps.

CAT. NO.	UPC NO.	DESCRIPTION
TDTLK	07524	Deluxe Electrical Test Kit

Industrial Test Lead Kit



- Kit contains: (2) modular test probes with sharp stainless steel tip, (2) 48" flexible test leads (TTLK) with straight and right angle meter plugs, Grabber clips with alligator tips (TGA-2), and a nylon carrying case.
- Measurement category: Probes, Cat III, 1000V per UL-3111; Cat IV, 600V per IEC 61010; Other components, Cat III, 1000V per UL-3111, Cat IV, 1000V per IEC 61010.
- Maximum current 10 amps.

CAT. NO.	UPC NO.	DESCRIPTION
TITLK	07523	Industrial Test Lead Kit

Test Lead Kit



- Kit contains: (1) 48" (1.2 m) long insulated test leads (TTL-2), (2) modular test probes.
- Measurement category: Probes, Cat III, 1000V per UL-3111; Cat IV, 600V per IEC 61010; Leads, Cat III, 1000V per UL-3111, Cat IV, 1000V per IEC 61010.
- Maximum current 10 amps.

CAT. NO.	UPC NO.	DESCRIPTION
TTLK	07522	Test Lead Kit

Medium Alligator Clips



- Insulated clip with sheathed receptacle.
- For use with test leads and test lead kits, Cat. Nos. TTL-2, TTLK, TITLK, and TDTLK.
- Set of 2 clips, one black, one red.
- Jaw opens to 0.3" (7.6 mm).
- Measurement category II, 300V per UL-3111-1; Cat IV, 600V per IEC 61010-1.
- Maximum current 5 amps.

CAT. NO.	UPC NO.	DESCRIPTION
TMA-2	07514	Medium Alligator Clips

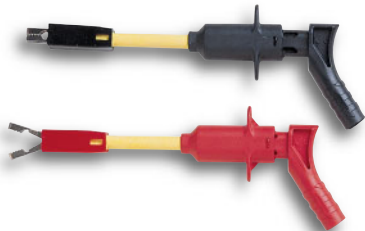
Extra-Large Alligator Clips



- Insulated clip with sheathed receptacle.
- For use with test leads and test lead kits, Cat. Nos. TTL-2, TTLK, TITLK, and TDTLK.
- Set of 2 clips, one black, one red.
- Jaw opens to 1" (25.4 mm).
- Measurement category IV, 600V per IEC 61010.
- Maximum current 10 amps.

CAT. NO.	UPC NO.	DESCRIPTION
TLA-2	07515	Extra-Large Alligator Clips

Grabber with Alligator Tip



- Sheathed receptacle for protection.
- For use with test lead and test kits, Cat. Nos. TTL-2, TTLK, TITLK, and TDTLK.
- Set of 2 clips, one black, one red.
- Overall length 7" (177.8 mm).
- Attaches to terminals up to 0.50" (12.7 mm) in diameter.
- Measurement category III, 1000V per UL-3111; Cat IV, 1000V per IEC 61010.
- Maximum current 10 amps.

CAT. NO.	UPC NO.	DESCRIPTION
TGA-2	07516	Grabber with Alligator Tip

Grabber with Pincer Tip



- Sheathed receptacle for protection.
- For use with test lead and test kits, Cat. Nos. TTL-2, TTLK, TITLK, and TDTLK.
- Set of 2 clips, one black, one red.
- Overall length 6.5" (165 mm).
- Attaches to terminals up to 0.16" (4.1 mm) in diameter.
- Measurement category III, 1000V per UL-3111; Cat IV, 1000V per IEC 61010.
- Maximum current 10 amps.

CAT. NO.	UPC NO.	DESCRIPTION
TGP-2	07517	Grabber with Pincer Tip

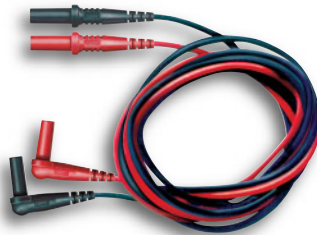
Grabber with Hook Tip



- Sheathed receptacle for protection.
- For use with test lead and test kits, Cat. Nos. TTL-2, TTLK, TITLK, and TDTLK.
- Set of 2 clips, one black, one red.
- Overall length 6.5" (165 mm).
- Hooks onto terminals up to 0.1" (2.5 mm) in diameter.
- Measurement category III, 1000V per UL-3111; Cat IV, 600V per IEC 61010.
- Maximum current 10 amps.

CAT. NO.	UPC NO.	DESCRIPTION
TGH-2	07519	Grabber with Hook Tip

Insulated Test Leads



- 48" (1.2 m) long flexible silicon insulated wire.
- Straight and right-angle plug meter plugs.
- Set of 2 leads, one black, one red.
- For use with T-series Greenlee Test Instrument accessories.
- Measurement category III, 1000V per UL-3111; Cat IV, 600V per IEC 61010.
- Maximum current 10 amps.

CAT. NO.	UPC NO.	DESCRIPTION
TTL-2	07520	Insulated Test Leads

Sure-Grip Test Leads



- 48" (1.2 m) long flexible silicon insulated wire.
- Right-angle meter plugs.
- Comfort-grip overmolded probes.
- Stainless steel tip for maximum durability.
- Set of 2 leads, one black, one red.
- Measurement category III, 1000V per UL-3111; Cat IV, 600V per IEC 61010.
- Maximum current 10 amps.

CAT. NO.	UPC NO.	DESCRIPTION
TSG-2	07521	Sure Grip Test Leads

Thermocouple Adapter



- Allows temperature probes with miniconnectors to be used with DMMs or clamp meters that are designed with a temperature measurement function via a banana jack input.

CAT. NO.	UPC NO.	DESCRIPTION
TA	07525	Thermocouple Adapter

DMM Boot



- For 200-series and 500-series Greenlee PRO Multimeters.
- Durable rubber construction protects your meter from damage.

CAT. NO.	UPC NO.	DESCRIPTION
TPBS	07579	DMM Boot (dark green)

DMM Boot



- For 800-series and DML-series Greenlee PRO Multimeters.
- Durable rubber construction protects your meter from damage.

CAT. NO.	UPC NO.	DESCRIPTION
TPBL	07580	DMM Boot (dark green)

Deluxe Carrying Case



- Durable nylon carrying case.
- Inside pocket for test leads.
- With carry strap and double-stitched belt loop.

CAT. NO.	UPC NO.	DESCRIPTION
TC-5	07588	Deluxe Carrying Case

SPECIFICATIONS

Size 7-3/4" x 3" x 1-1/2" (196.9 mm x 76.2 mm x 38.1 mm)

Deluxe Carrying Case



- Durable nylon carrying case.
- Inside pocket for test leads.
- With carry strap and double-stitched belt loop.

CAT. NO.	UPC NO.	DESCRIPTION
TC-10	07534	Deluxe Carrying Case

SPECIFICATIONS

Size	9-1/4" x 3" x 1-3/4" (235.0 mm x 76.2 mm x 44.5 mm)
-------------	---

Deluxe Carrying Case



- Durable nylon carrying case.
- Inside pocket for test leads.
- With carry strap and double-stitched belt loop.

CAT. NO.	UPC NO.	DESCRIPTION
TC-15	07595	Deluxe Carrying Case

SPECIFICATIONS

Size	11-1/4" x 3" x 2" (285.8 mm x 76.2 mm x 50.8 mm)
-------------	--

Deluxe Carrying Case



- Durable nylon carrying case.
- Inside pocket for test leads.
- With carry strap.

CAT. NO.	UPC NO.	DESCRIPTION
TC-30	07536	Deluxe Carrying Case

SPECIFICATIONS

Size	11-1/4" x 4-1/4" x 2" (285.8 mm x 108 mm x 50.8 mm)
-------------	---

Deluxe Carrying Case



- Durable nylon carrying case.
- Inside pocket for test leads.
- Elastic straps inside to hold multiple instruments.
- With carry strap.

CAT. NO.	UPC NO.	DESCRIPTION
TC-20	07535	Deluxe Carrying Case

SPECIFICATIONS

Size	7-3/4" x 6-1/4" x 2" (196.9 mm x 158.8 mm x 50.8 mm)
-------------	--



- Durable nylon carrying case.
- Inside pocket for test leads.
- Elastic straps inside to hold multiple instruments.
- With carry strap.

CAT. NO.	UPC NO.	DESCRIPTION
TC-28	07715	Deluxe Carrying Case

SPECIFICATIONS

Size	9" x 6-1/4" x 2" (228.6 mm x 158.8 mm x 50.8 mm)
-------------	--

Deluxe Carrying Case



- Durable nylon carrying case.
- Velcro open/close flap for easy access.
- Inside pocket for test leads.
- With carry strap and double-stitched belt loop.

CAT. NO.	UPC NO.	DESCRIPTION
TC-50	07746	Deluxe Carrying Case

SPECIFICATIONS

Size 8-1/4" x 6" x 2" (210 mm x 152 mm x 51 mm)



- Durable nylon carrying case.
- Velcro open/close flap for easy access.
- Inside pocket for test leads.
- With carry strap and double-stitched belt loop.

CAT. NO.	UPC NO.	DESCRIPTION
TC-55	07747	Deluxe Carrying Case

SPECIFICATIONS

Size 11-1/2" x 6" x 2" (292.1 mm x 152.4 mm x 51 mm)

Deluxe Carrying Case



- Rugged hard-side carrying case.
- Foam padding to protect contents.
- Lockable handle for added security.

CAT. NO.	UPC NO.	DESCRIPTION
TC-60	07752	Deluxe Carrying Case

SPECIFICATIONS

Size 14-1/8" x 10-3/8" x 3-1/2" (358.8 mm x 263.5 mm x 88.9 mm)

Deluxe Carrying Case



- Rugged hard-side carrying case.
- Foam padding to protect contents.
- Lockable handle for added security.

CAT. NO.	UPC NO.	DESCRIPTION
TC-65	07753	Deluxe Carrying Case

SPECIFICATIONS

Size 13-1/2" x 11" x 4" (342.9 mm x 279.4 mm x 101.6 mm)

FUSE SELECTION GUIDE

Catalog number:	DMF-100	DMF-150	DMF-200	DMF-250	DMF-300	DMF-350	DMF-400	DMF-450	DMF-500	DMF-550	DMF-600	DMF-650	DMF-700	DMF-750
AM-600												✓		
AM-600T												✓		
AM-1000		✓												
DM-50			✓											
DM-55			✓											
DM-100										✓				
DM-110										✓				
DM-200				✓	✓									
DM-210				✓	✓									
DM-500	✓					✓								
DM-510	✓					✓								
DM-800							✓	✓						
DM-810							✓	✓						
DM-820							✓	✓						
DM-860							✓	✓						
DML-430							✓	✓						
DML-54							✓	✓						
IPM-300											✓			
IPM-400														✓
PDMM-10			✓											
5878													✓	
5880													✓	
5882													✓	
93-502			✓											
93-602		✓												
93-606		✓												

FUSE CROSS REFERENCE

Catalog Number	Bussman	Littelfuse	Ferraz	Amperage	Voltage	Interrupting Rating (Amps)
DMF-100	GDA-160mA	216.160		160 mA	250 V	1500
DMF-150	GDA-500mA	216.500		500 mA	250 V	1500
DMF-200	GDA-200mA	216.200		200 mA	250 V	1500
DMF-250			500V FA 0,63A 6,3X32	0.63 Amp	500 V	200,000
DMF-300			500V FA 12,5A 6,3X32	12.5 Amp	500 V	20,000
DMF-350	KTK 15	KLK 15		15 Amp	600V	100,000
DMF-400	KTK 1	KLK 1		1 Amp	600V	100K,000
DMF-450		585-15		15 Amp	1000V	10,000
DMF-500	AGC-10			10 Amp	250V	200
DMF-550			500V FA 16A 6,3X32	16A	500V	10,000
DMF-600	GMA-63mA	217.063		63 mA	250V	35
DMF-650	AGC-1/2			500mA	250V	1500
DMF-700			660V FA 0,63A 6,3X32	0.63A	660V	30,000
DMF-750		R451.125		125 mA	125V	50

TEST LEAD KIT COMPATIBILITY

Catalog numbers TTL-2, TSG-2, TTLK, TTLK, and TDTLK are compatible with all Greenlee instruments with IEC-compliant shrouded banana jacks.

	TL-400	TL-80	IPTLK-300	IPTLK-400	IPTWK
CM-400	✓				
CMT-80		✓			
IPM-300			✓		✓
IPM-400				✓	✓
IPK-40				✓	✓

SOFTWARE COMPATIBILITY

	DMSC-2	DMSC-8L	DMSC-9CMPL-100-1A
DM-200	✓		
DM-210	✓		
DM-800		✓	
DM-810		✓	
DM-820		✓	
DM-860			✓
DML-54		✓	
DML-430		✓	
CMPL-100			✓

INSTRUMENT CASE COMPATIBILITY

	TC-5	TC-10	TC-15	TC-20	TC-28	TC-30	TC-50	TC-55	IPC-10	IPC-20
AM-600 Series						✓				
AM-1000						✓				
CM-300 Series	✓									
CM-400		✓								
CM-600 Series		✓								
CM-700 Series		✓								
CM-800 Series		✓								
CM-900 Series		✓								
CM-1000 Series						✓				
CM-1100						✓				
CM-1200						✓				
CM-1300 Series						✓				
CM-1500 Series						✓				
CMA-40		✓								
CMA-60		✓								
CMAF Series				✓	✓					
CMGL-10		✓								
CMI-100						✓				
CMI-200								✓		
CMP-200						✓		✓		
CMPL-100							✓			
CMT Series		✓								
DM-200 Series				✓	✓					
DM-500 Series				✓	✓					
DM-800 Series				✓	✓					
DML Series				✓	✓					
DVC Series			✓							
HPA-10	✓									
IPK-40									✓	✓
IPM-100	✓									
IPM-300										✓
IPM-400										✓
IPPM modules									✓	
LT-100		✓								
SDMM-1		✓								
SM-100						✓				
SVC Series		✓								
THH-500	✓									
THM-250	✓									
TPA-10	✓									
2010		✓								
2012			✓	✓						
5702				✓						
5708		✓								
5708i		✓								
5723				✓						
5779				✓						
6701		✓								
93-602				✓	✓					
93-606				✓	✓					

BOOT/HOLSTER COMPATIBILITY

	TPBS	TPBL	TPBS-P1	TPBL-P2	IPB-300	TMB
DM-200	✓		✓			
DM-210	✓		✓			
DM-500	✓		✓			
DM-510	✓		✓			
DM-800		✓		✓		
DM-810		✓		✓		
DM-820		✓		✓		
DM-860		✓		✓		
DML-54		✓		✓		
DML-430		✓		✓		
IPM-300					✓	
IPM-400					✓	
TM-200						✓
TML-30						✓