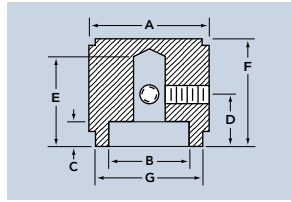


MACHINED ALUMINUM KNOBS



PV SERIES

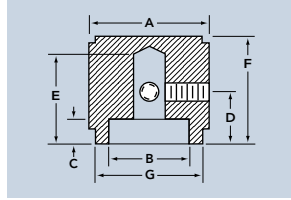


Part Number		A	B	C	D	E	F	G	2 Set Screws
Style	Diam.	Diam.	Height	Height	Height	Height	Height	Diam.	
PV-12	.500	.375	.160	.295	.510	.622	.450		6-32
PV-19	.750	.590	.160	.295	.510	.622	.695		6-32
PV-25	.937	.708	.160	.295	.510	.622	.885		6-32
PV-32	1.250	.975	.160	.295	.510	.622	1.195		6-32

PV Series knobs come in a Natural or Black Anodized finish.



PB SERIES

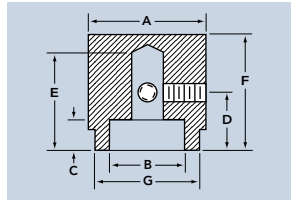


Part Number		A	B	C	D	E	F	G	2 Set Screws
Style	Diam.	Diam.	Height	Height	Height	Height	Height	Diam.	
PB-12	.500	.375	.120	.330	.640	.790	.450		6-32
PB-19	.750	.590	.120	.330	.640	.790	.710		6-32
PB-25	.937	.708	.120	.330	.640	.790	.885		6-32
PB-32	1.250	.975	.120	.330	.640	.790	1.195		6-32

PB Series knobs come in a Natural or Black Anodized finish.



PVL SERIES

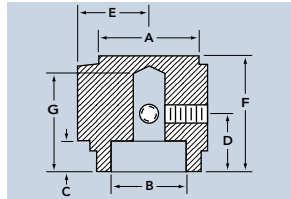


Part Number		A	B	C	D	E	F	G	2 Set Screws
Style	Diam.	Diam.	Height	Height	Height	Height	Height	Diam.	
PVL-12	.500	.375	.177	.295	.510	.622	.445		6-32
PVL-19	.750	.590	.177	.295	.510	.622	.655		6-32
PVL-25	.937	.708	.177	.295	.510	.622	.885		6-32
PVL-32	1.250	.975	.177	.295	.510	.622	1.195		6-32

PVL Series knobs come in a Natural or Black Anodized finish.



PKP SERIES

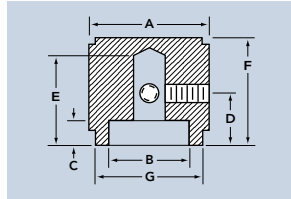


Part Number		A	B	C	D	E	F	G	2 Set Screws
Style	Diam.	Diam.	Height	Height	Radius	Height	Height	Height	
PKP-12	.500	.375	.120	.320	.375	.630	.510		6-32
PKP-19	.750	.590	.120	.320	.510	.630	.510		6-32
PKP-25	.937	.708	.120	.320	.629	.630	.510		6-32

PKP Series knobs come in a Natural or Black Anodized finish.



PV TWO-TONE SERIES

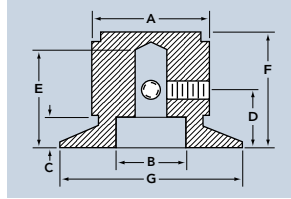


Part Number		A	B	C	D	E	F	G	2 Set Screws
Style	Diam.	Diam.	Height	Height	Height	Height	Height	Diam.	
PV-12 BA	.500	.375	.160	.295	.510	.622	.450		6-32
PV-19 BA	.750	.590	.160	.295	.510	.622	.695		6-32
PV-25 BA	.937	.708	.160	.295	.510	.622	.885		6-32
PV-32 BA	1.250	.985	.160	.295	.510	.622	1.195		6-32

PV Two-Tone Series knobs come in a Natural and Black Anodized finish.



PVS TWO-TONE SERIES

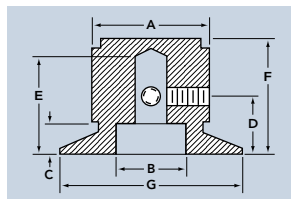


Part Number		A	B	C	D	E	F	G	2 Set Screws
Style	Diam.	Diam.	Height	Height	Height	Height	Height	Diam.	
PVS-12 BA	.500	.375	.177	.295	.510	.622	.750		6-32
PVS-19 BA	.750	.590	.177	.295	.510	.622	1.120		6-32
PVS-25 BA	.937	.708	.177	.295	.510	.622	1.640		6-32

PVS Two-Tone Series knobs come in a Natural and Black Anodized finish.



PVS SERIES



Part Number		A	B	C	D	E	F	G	2 Set Screws
Style	Diam.	Diam.	Height	Height	Height	Height	Height	Diam.	
PVS-12	.500	.375	.177	.295	.510	.622	.750		6-32
PVS-19	.750	.590	.177	.295	.510	.622	1.120		6-32
PVS-25	.937	.708	.177	.295	.510	.622	1.640		6-32

PVS Series knobs come in a Natural or Black Anodized finish.

EXAMPLE: PB-12A-1

Series	Diameter	Finish	Shaft Hole
PB	12	A	1

ORDERING GUIDE FOR MACHINED ALUMINUM SERIES

Series	Diameter	Finish/Color	Shaft Hole
PB	12- 1/2"	A- Clear Anodize	1- 1/8" Round
PV	19- 3/4"	B- Black Anodize	2- 1/4" Round
PKP	25- 1/4"	BA-2-tone	
PVL	32- 1/4"		
PVS			

All of the above knobs are available for .125" and .250" shaft sizes.

