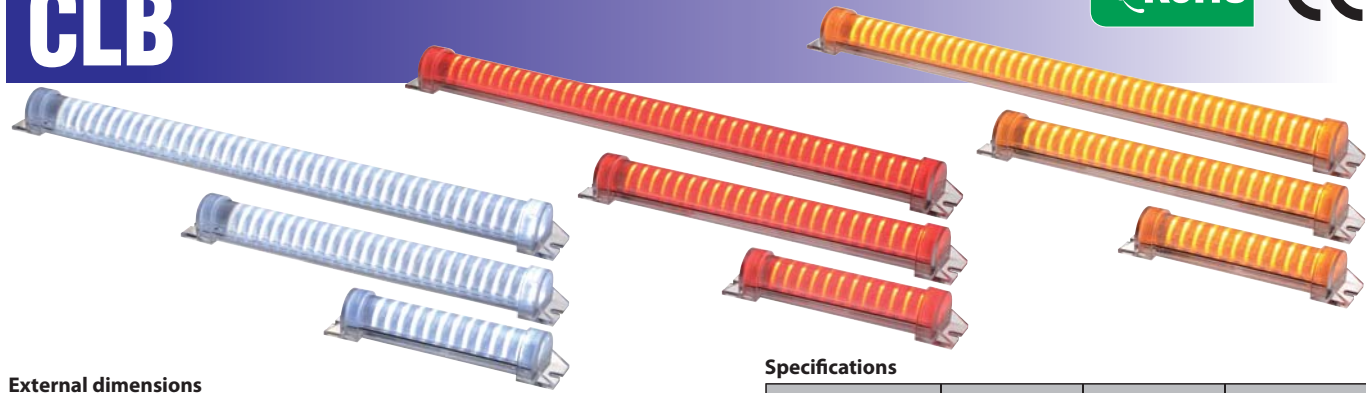
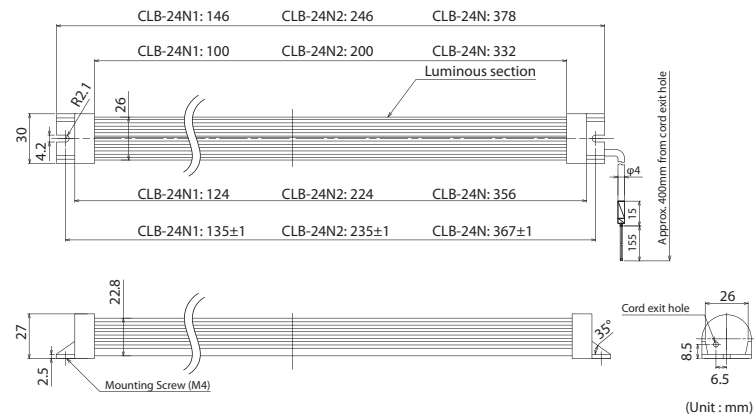


LED Light Bar

CLB



External dimensions



Specifications

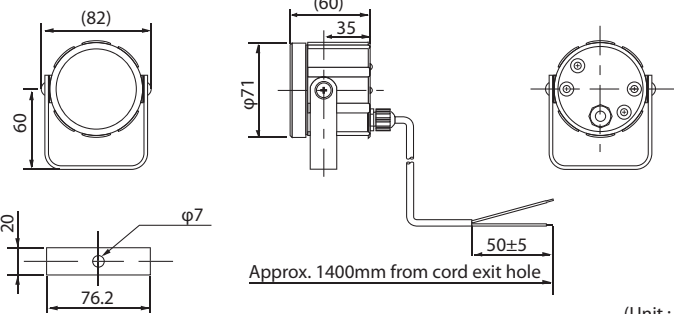
Model	CLB-24N1-			CLB-24N2-			CLB-24N-		
	R	Y	C	R	Y	C	R	Y	C
LED color									
Rated voltage	DC24V (No polarity)								
Operating voltage range	DC24V ± 1V								
Rated current consumption(mA)	35 ⁺³ ₋₅	35 ⁺⁵ ₋₅	60 ⁺¹⁰ ₋₁₀	70 ⁺¹⁰ ₋₁₀	70 ⁺¹⁰ ₋₁₀	120 ⁺²⁰ ₋₂₀	122 ⁺¹⁸ ₋₁₈	122 ⁺¹⁸ ₋₁₈	224 ⁺⁵⁰ ₋₄₀
Operating temperature range	-30°C ~ +60°C								
Relative humidity	Less than 90% RH (No condensation)								
Main body	Polycarbonate								
Protection Rating	IP42								
Luminous intensity at optical center(lm*)	20	20	85	40	40	185	60	60	300
Mounting Direction	Indoor: Horizontal or vertical (up and down)								
Vibration resistance	19.6m/s ²								
Agency Approval	CE / RoHS								
Mass	41g ± 10%			60g ± 10%			86g ± 10%		

LED Work Light

CLE



External dimensions



Specifications

Mode	CLE-24	CLE-24N
	Wide Beam	Narrow Beam
Glass surface	Frosted	Clear
Rated voltage	DC24V (No polarity)	
Rated power consumption	3W	
Operating voltage range	Rated Voltage ±10%	
Operating temperature range	-25°C ~ +60°C	
Protection Rating	IP65f	
Luminous intensity (at optical center)	20cd	130cd
Mounting Direction	Horizontal, vertical (up and down)	
Vibration resistance	19.6m/s ²	
Mass	0.3kg	
Agency Approval	CE	

PATLITE Corporation

8-8, Matsuyamachi, Chuo-ku, Osaka, Japan 542-0067
International Division, Sales and Marketing Department TEL.+81-6-6763-8220 FAX.+81-6-6763-8221

PATLITE (U.S.A.) Corporation
20130 S. Western Ave., Torrance, CA 90501, U.S.A. TEL.+1-310-328-3222 FAX.+1-310-328-2676

PATLITE Corporation/European Office
Teinfalt strasse 8/4.Stock 1010 Vienna, Austria TEL.+43-1-961-0655 FAX.+43-1-961-0655-210

PATLITE (SINGAPORE) PTE LTD
2 Havelock Road, #05-01/02, Apollo Centre, Singapore 059763 TEL.+65-6226-1111 FAX.+65-6324-1411

PATLITE (CHINA) Corporation
Block E, No.9 FL, Hua Du Bldg., No.828-838 Zhang Yang Road, Pudong Dist., Shanghai 200122 China TEL.+86-21-68761533 FAX.+86-21-68769688

<http://www.patlite.co.jp/int/> E-mail: overseas@patlite.co.jp

CAUTION
To ensure correct use of these products, read the Instruction Manual prior to use.
Failure to follow all safeguards can result in fire, electric shock, or other accidents.
Specifications are subject to change without notice.



For the benefit of mankind and the earth, Patlite is committed to developing environmentally friendly products.



1210A 0804

PATLITE®

LED Luminaire Series

- PATLED's LED Light Bar Model CLF
- PATLED's LED Work Light Model CLM
- LED Light Bar Model CLB
- LED Work Light Model CLE

PATLED's®

LED luminaries provide superior performance compared to conventional luminaries

Low power consumption, low heat generation, high luminous intensity, and long service life.

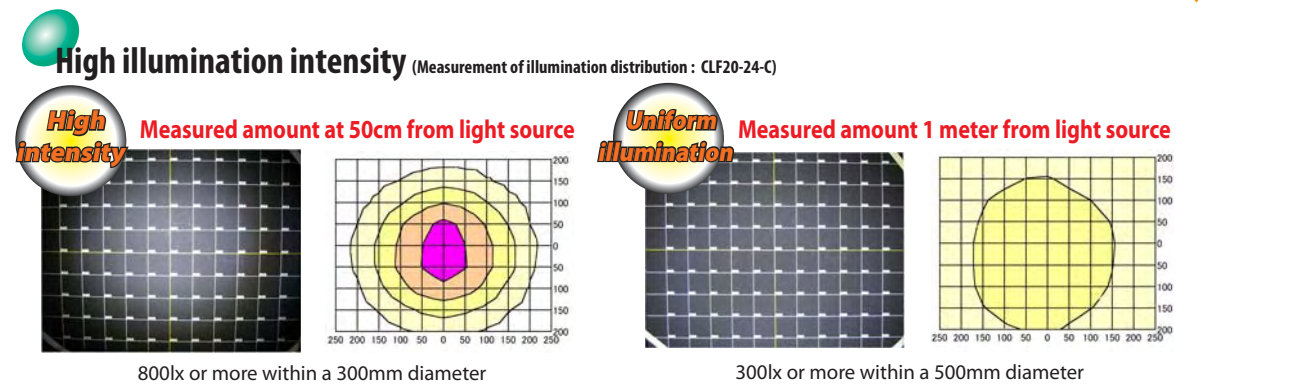
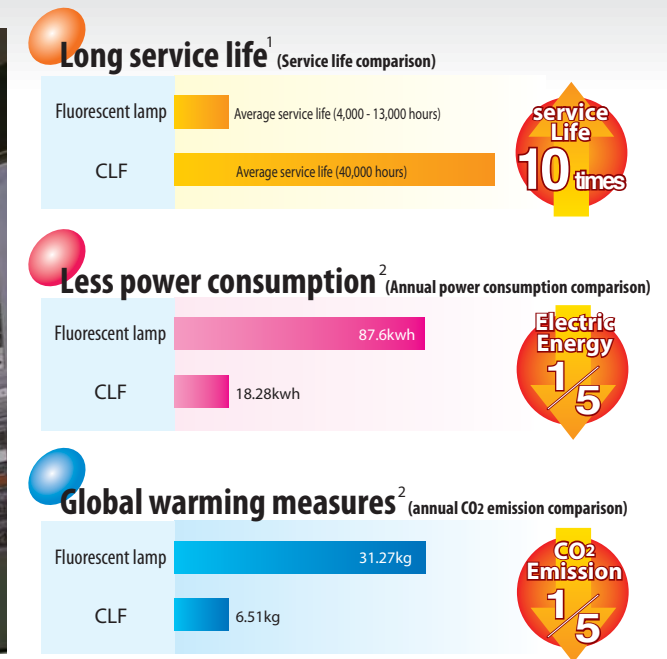


www.patlite.co.jp

PATLED[®]s

PATLITE's LED luminaries, PATLED[®]s series, is designed as the next generation luminary devices that serve a wide range of applications in the factory automation field.

PATLED'S series provide superior performance over conventional luminaries



lx : Luminous intensity . . . Amount of light power of the illuminated area

PATLED's (CLM and CLF series) are designed to satisfy the technical requirements for luminary devices. PATLED's have CE Marking and are RoHS Directive compliant for use in overseas countries.

Example of recommended standards for luminous intensity

CE Marking Work-plane illuminance 500lx or more
(International Commission on Illumination)

Model CLF20-24-C

1. LED life is when its brightness decreases to 70% of initial brightness
2. Calculation of annual CO2 emission, comparison between 100V20W fluorescent lamp and CLF20-24-C. Assumed 10 hour operation per day. Amount of CO2 emission is 0.357kg per hour.

CLF



Waterproof Illumination LED Light Bar Model CLF

High power 1,700lx illumination* for precise work operation

1,700lx illumination and daylight color temperature are suitable for performing precise work.
* Luminous intensity at 50cm (CLF20-24-C)

Water and dustproof IP67 construction

Robust aluminum body, polycarbonate cover and silicone gasket securely protect the product. Rubber gasket is placed on the backside of body to meet IP67 construction for flush mounting.



Steady Light Source

Compared to fluorescent lights, the steady light generated by the CLF reduces eye fatigue and misjudgement of rotating objects even without the use of a high frequency inverter.

The light emitted from the unit does not contain infrared or UV rays which radiate heat and damage materials

Stable operation -30°C to +60°C

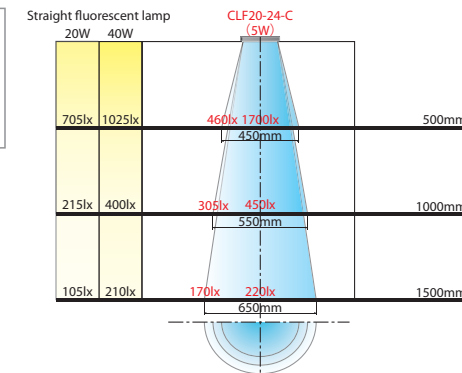
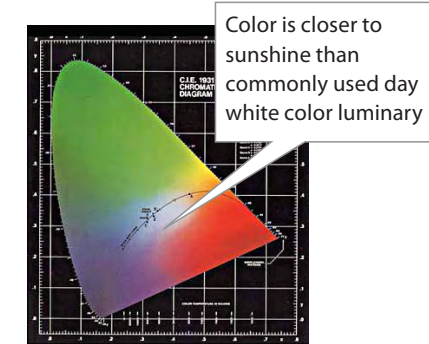


White color LED is perfect for machine tool and control panel applications



Red Semiconductor manufacturing machinery, tester, etc.
Yellow Semiconductor manufacturing machinery, cleanroom environment, etc.

Specifications of red color type and yellow color type may be different from those of white color type



Daylight color close to sunshine

Daylight color (6,500-7,500K) is defined as a color close to sunshine at noon, and is suitable for recognizing shapes, precise work, test and research applications. (Close to D65 light source)

Illumination simulation

The specially designed lens gives uniform illumination and intense luminosity over a widerange. As a replacement of florescent lamps, the CLF series also provide long service life and maintenance-free operation.

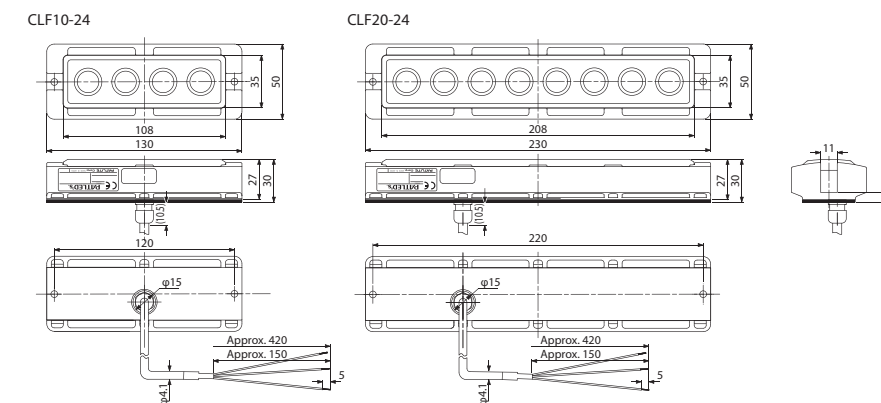
Water and dustproof IP67 construction

Power cable is drawn from the backside of body. When flush mounting, the cable will not be exposed and the cable bushing is not required. Multiple units can be installed vertically or horizontally without any space between the units.

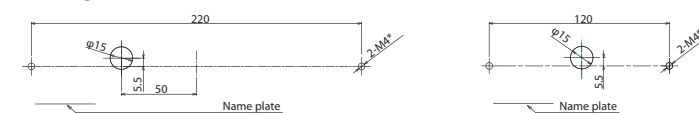
Vertical mounting



External dimensions



Mounting dimensions



* When mounting with supplied nuts : φ4.5

(Unit : mm)

Model	CLF10-24			CLF20-24		
LED color	R	Y	C	R	Y	C
Rated voltage	DC24V (No polarity)					
Operating voltage range	Rated voltage±10%					
Power consumption	2.5W			5W		
Light source	High intensity LED×4			High intensity LED×8		
Luminous intensity at optical center (lx/50cm)	240	320	850	470	630	1,700
Main body	Housing : Aluminum			Cover : Polycarbonate		
Operating temperature range	-30°C - +60°C (No condensation 90% RH or less)					
Installation	Indoor, Forward Direction					
Protection rating	IP67					
Vibration resistance	19.6m/S ²					
Mass	205g±10g			345g±10g		

CLM

PATLED⁺s



Oil resistant spot illumination
LED work light
 Model CLM-24

Superior luminous intensity of 500cd at optical center

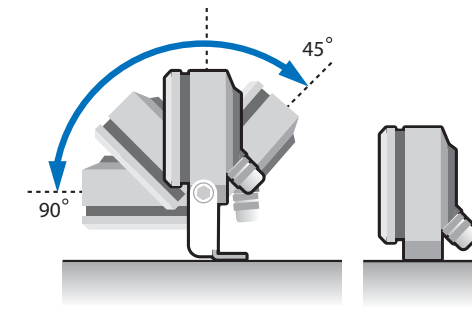
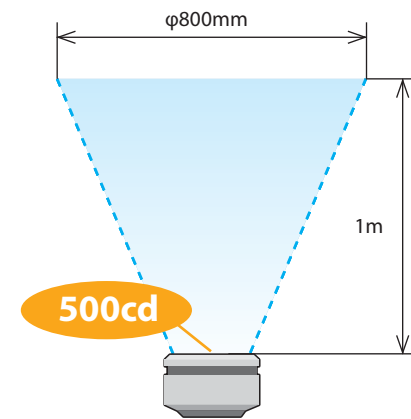
High intensity LED is used for light source. Power consumption is only 3W and heat generation is greatly reduced.

Water, oil and dust resistant IP67f construction

IP67f construction is suitable for machine tool application where oil resistance is essential. Body is made of robust aluminum.

RoHS Directive compliant and lead-free soldering design

CLM-24 is RoHS compliant and environmentally conscious materials are used.



Luminous intensity of 500cd at optical center

Five super-bright LEDs deliver 500cd of luminous intensity at the optical center while consuming only 3W of electricity and generating very little heat. Illumination is also evenly distributed over an 800mm diameter at 1 meter from the light source.

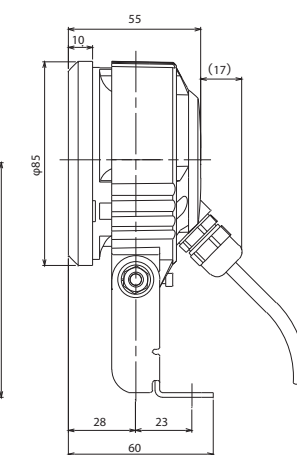
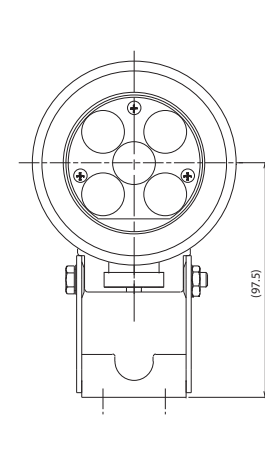
Mounting in any direction is possible

CLM-24 can be mounted in any direction by adjusting the mounting angle. Body and mounting bracket is securely fixed with a screw placed on the backside of body. Direct Mounting is also possible when mounting bracket is removed.

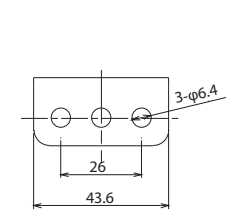
Efficient heat radiation design

Specially designed aluminum body with heat sink provides durable construction, low operating temperature and bright, stable, LED function.

External dimensions



Mounting dimensions



*Power cable length : 1400 mm from cable exit
 *Do not stare into beam CLASS 2 LASER

(Unit: mm)

Model	CLM-24
Rated voltage	DC24V (No polarity)
Operating voltage range	21.6V~26.4V
Rated power consumption	3W
Rated current consumption	100 ± 5mA
Light source	High intensity LEDx5
Luminous intensity (at optical center)	500cd (at optical center)
Main body	Aluminum die cast (baked surface finish)
Glass surface	Tempered glass
Operating temperature range	-30°C - +60°C (No condensation 90% RH or less)
Mounting Direction	Horizontal, vertical (up and down)
Protection rating	IP67f
Vibration resistance	19.6m/S ² JIS C 0911-1984 30Hz
Mass	0.45kg