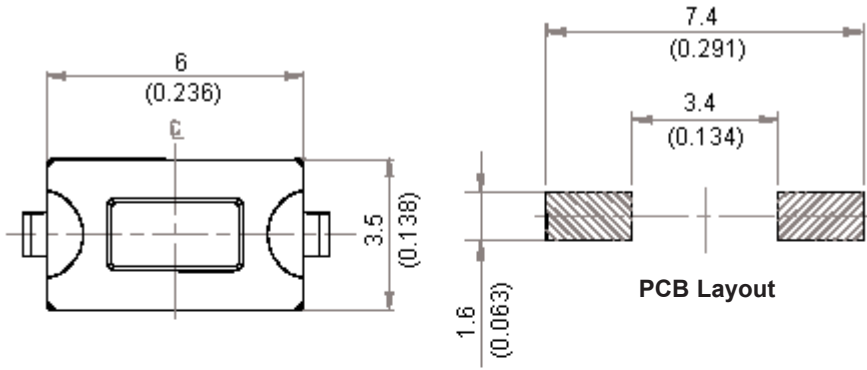
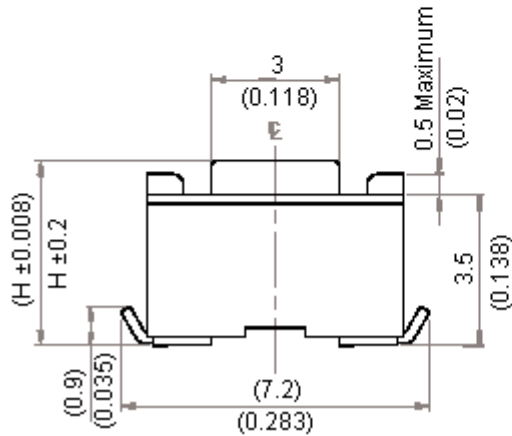


REVISIONS

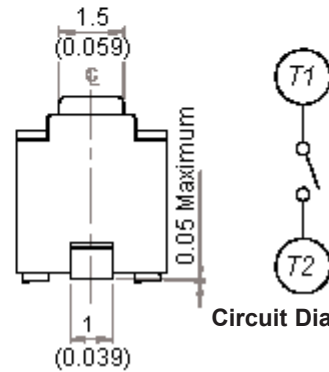
ECN #	REV	DESCRIPTION	DRAWN	DATE	CHECKD	DATE	APPRVD	DATE
-	A	RELEASED	SID	04/5/12	AMU	04/5/12		18/5/12



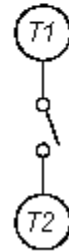
PCB Layout



General Tolerance Maximum ±0.2 mm



Dimensions : Millimetres (Inches)



Circuit Diagram

Features:

- Sharp click feel with a positive tactile feedback. Due to small movement distance (stroke), user experiences distinct sensation when the switch clicks into place
- Ultra miniature and light weight structure suitable for high density mounting Economic but high reliability
- Insert moulding in the contact with special treatment prevents flux build-up during soldering and permits auto-dipping

Specifications:

Materials

- Cover : Stainless steel
- Base : Nylon or PPA high temperature thermoplastic
Colour : Black
- Stem : Nylon high temperature thermoplastic
Colour : Salmon (320 gf)
- Contact Disc : Stainless steel with silver cladding
- Terminal : Brass with silver cladding

Mechanical

- Operation force : 320 ±80 gf salmon (S)
- Stroke : 0.25 (+0.2 / -0.1 mm)
- Operating Temperature Range : -25°C to +70°C
- Storage Temperature Range : -30°C to +80°C
- Vibration Test : MIL-STD-202F method 201A
 - Frequency : 10 - 55 - 10 Hz / 1 minute
 - Directions : X, Y, Z three mutually perpendicular directions
 - Time : 2 hours each direction
- High reliability

Important Notice : This data sheet and its contents (the "Information") belong to the members of the Premier Farnell group of companies (the "Group") or are licensed to it. No licence is granted for the use of it other than for information purposes in connection with the products to which it relates. No licence of any intellectual property rights is granted. The Information is subject to change without notice and replaces all data sheets previously supplied. The Information supplied is believed to be accurate but the Group assumes no responsibility for its accuracy or completeness, any error in or omission from it or for any use made of it. Users of this data sheet should check for themselves the information and the suitability of the products for their purpose and not make any assumptions based on information included or omitted. Liability for loss or damage resulting from any reliance on the Information or use of it (including liability resulting from negligence or where the Group was aware of the possibility of such loss or damage arising) is excluded. This will not operate to limit or restrict the Group's liability for death or personal injury resulting from its negligence. Multicomp is the registered trademark of the Group. © Premier Farnell plc 2012.

<p>TOLERANCES:</p> <p>UNLESS OTHERWISE SPECIFIED, DIMENSIONS ARE FOR REFERENCE PURPOSES ONLY.</p>	DRAWN BY:	DATE:	DRAWING TITLE:			
	SID	04/05/12				
	CHECKED BY:	DATE:	SIZE	DWG NO.	ELECTRONIC FILE	REV
	AMU	04/05/12	A	M10000250	233660_2_DWG	A
	APPROVED BY:	DATE:	SCALE: NTS	U.O.M.: mm (Inches)	SHEET: 1 OF 3	
	18/05/12					



PART NO.

DTSM-32S-B

REVISIONS

ECN #	REV	DESCRIPTION	DRAWN	DATE	CHECKD	DATE	APPRVD	DATE
-	A	RELEASED	SID	04/5/12	AMU	04/5/12		18/5/12

Mechanical

Shock Test : MIL-STD-202F Method 213B
 Condition A
 Gravity : 50 G (peak value), 11 milliseconds
 Direction and times : 6 sides and 3 times in each direction
 High reliability

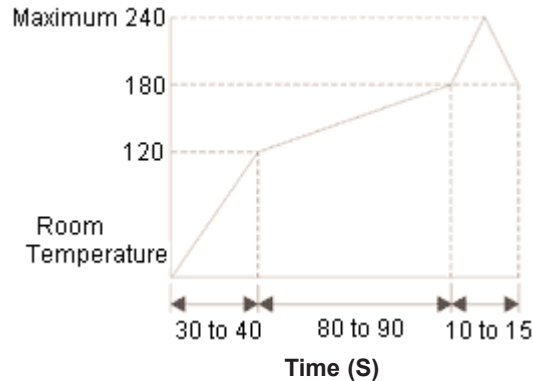
Electrical

Electrical Life : 50,000 cycles for 320 gf
 Contact Resistance : 100mΩ maximum
 Insulation Resistance : 100 MΩ minimum at 500 V dc
 Dielectric Strength : 250 V ac / 1 minute
 Contact Arrangement : 1 pole 1 throw

Soldering Process

Hand Soldering : Use a soldering iron of 30 watts, controlled at 608°F (320°C) approximately 2 seconds while applying solder
 Reflow Soldering : When applying reflow soldering, the peak temperature or the reflow oven should be set to 240°C maximum condition for soldering (Reflow and Non-washable type)
 Wave Soldering : Recommended solder temperature at 500°F (260°C) maximum. 5 seconds, for through hole type. Subject to PCB 1.6 mm thickness

Reflow Temperature Profile



Important Notice : This data sheet and its contents (the "Information") belong to the members of the Premier Farnell group of companies (the "Group") or are licensed to it. No licence is granted for the use of it other than for information purposes in connection with the products to which it relates. No licence of any intellectual property rights is granted. The Information is subject to change without notice and replaces all data sheets previously supplied. The Information supplied is believed to be accurate but the Group assumes no responsibility for its accuracy or completeness, any error in or omission from it or for any use made of it. Users of this data sheet should check for themselves the Information and the suitability of the products for their purpose and not make any assumptions based on information included or omitted. Liability for loss or damage resulting from any reliance on the Information or use of it (including liability resulting from negligence or where the Group was aware of the possibility of such loss or damage arising) is excluded. This will not operate to limit or restrict the Group's liability for death or personal injury resulting from its negligence. Multicomp is the registered trademark of the Group. © Premier Farnell plc 2012.

TOLERANCES:

UNLESS OTHERWISE SPECIFIED, DIMENSIONS ARE FOR REFERENCE PURPOSES ONLY.

DRAWN BY:	DATE:
SID	04/05/12
CHECKED BY:	DATE:
AMU	04/05/12
APPROVED BY:	DATE:
	18/05/12

DRAWING TITLE:			
Tact Switch			
SIZE	DWG NO.	ELECTRONIC FILE	REV
A	M10000250	233660_2_DWG	A
SCALE: NTS		U.O.M.: mm (Inches)	SHEET: 2 OF 3



PART NO.

DTSM-32S-B

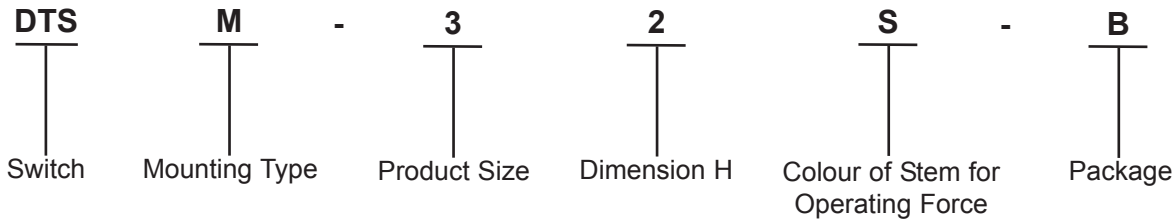
REVISIONS

ECN #	REV	DESCRIPTION	DRAWN	DATE	CHECKD	DATE	APPRVD	DATE
-	A	RELEASED	SID	04/5/12	AMU	04/5/12		18/5/12

Specification Table

Current Rating at 12 V dc (mA)	Part Number
50	DTSM-32S-B

Part Number Explanation:



- Switch** : Tactile switch
- Mounting Type** : M = Surface Mounting Type
- Product Size** : 3 = 3.5 × 6
- Dimension H** : 2 = 5 mm
- Colour of the Stem Operating Force** : S = Salmon, 320 gf
- Package** : B = Tube Package

www.element14.com
www.farnell.com
www.newark.com

Important Notice : This data sheet and its contents (the "Information") belong to the members of the Premier Farnell group of companies (the "Group") or are licensed to it. No licence is granted for the use of it other than for information purposes in connection with the products to which it relates. No licence of any intellectual property rights is granted. The Information is subject to change without notice and replaces all data sheets previously supplied. The Information supplied is believed to be accurate but the Group assumes no responsibility for its accuracy or completeness, any error in or omission from it or for any use made of it. Users of this data sheet should check for themselves the information and the suitability of the products for their purpose and not make any assumptions based on information included or omitted. Liability for loss or damage resulting from any reliance on the Information or use of it (including liability resulting from negligence or where the Group was aware of the possibility of such loss or damage arising) is excluded. This will not operate to limit or restrict the Group's liability for death or personal injury resulting from its negligence. Multicomp is the registered trademark of the Group. © Premier Farnell plc 2012.

TOLERANCES: UNLESS OTHERWISE SPECIFIED, DIMENSIONS ARE FOR REFERENCE PURPOSES ONLY.	DRAWN BY:	DATE:	DRAWING TITLE: Tact Switch			
	SID	04/05/12				
	CHECKED BY:	DATE:	SIZE A	DWG NO. M10000250	ELECTRONIC FILE 233660_2_DWG	REV A
	AMU	04/05/12				
	APPROVED BY:	DATE:	SCALE: NTS		U.O.M.: mm (Inches)	
	18/05/12					