

37 4101, 37 4102,
37 4103 and 37 4104



37 5101



37 5102



Features:

- Offers a grey 'non-marking' rubber tyre on a black nylon centre including thread guards which is available with plain bore

The wheels can be fitted in the following castor housings:

- Top plate swivel, fixed and swivel with foot brake
- Threaded stem swivel and threaded stem with foot brake

37 5104



37 6101, 37 6102,
37 6103 and 37 6104



37 8101, 37 8102
and 37 8103



37 9101, 37 9102, 37
9103 and 37 9104



Recommended Uses:

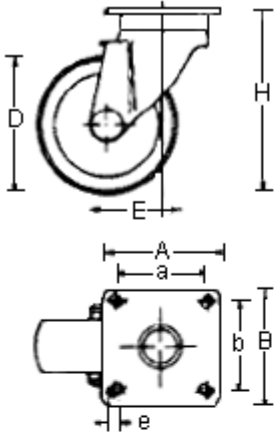
This wheel type is recommended for light duty applications

Specifications:

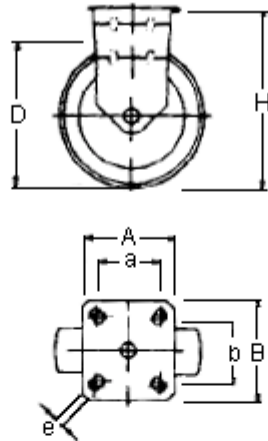
In accordance with ISO 2175. Defines castor and / or wheel application appropriate with environmental conditions-load, speed of use, temperature, floor condition and cycle time

Type : Plain bearing bore

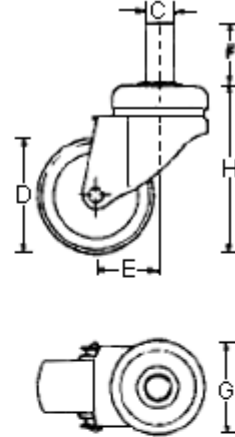
37 4101, 37 4102, 37 4103
and 37 4104



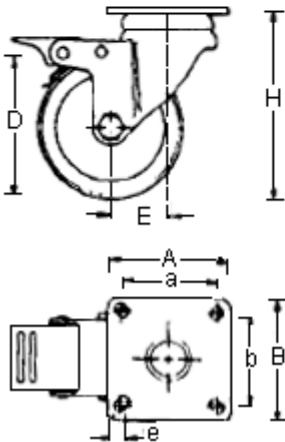
37 5101, 37 5102
and 37 5104



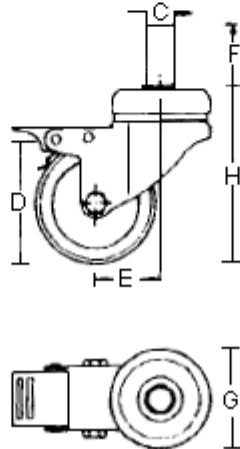
37 6101, 37 6102, 37 6103
and 37 6104



37 8101, 37 81032
and 37 8103



37 9101, 37 9102, 37 9103
and 37 9104



Dimensions : Millimetres

Specification Table

Description	Wheel Diameter (D)	Thread Width (b)	Overall Height (H)	Plate Dimensions (A x B)	Hole Spacing (a x b)	Hole Width (e)	Offset (E)	Carrying Capacity (kg)	Part Number
Castor, Apparatus, Swivel Top	50	24	68	55 x 55	40 x 40	6	25	35	37 4101
Castor, Apparatus, Swivel Top	60		85	60 x 60	45 x 45		21	50	37 4102
Castor, Apparatus, Swivel Top	80		106				25	55	37 4103
Castor, Apparatus, Swivel Top	100		121				32	55	37 4104

Dimensions : Millimetres

Castors



Description	Wheel Diameter (D)	Thread Width (b)	Overall Height (H)	Plate Dimensions (A x B)	Hole Spacing (a x b)	Hole Width (e)	Offset (E)	Carrying Capacity (kg)	Part Number
Castor, Apparatus, Fixed Top	50	20	68	55 x 55	40 x 40	6	-	35	37 5101
Castor, Apparatus, Fixed Top	60	24	85	60 x 60	45 x 45			50	37 5102
Castor, Apparatus, Fixed Top	100	24	121					55	37 5104

Description	Wheel Diameter (D)	Thread Width (b)	Overall Height (H)	Stem Diameter (C)	Stem Length (F)	Plate Diameter (C)	Offset (E)	Carrying Capacity (kg)	Part Number
Castor, Apparatus, Swivel*	50	20	66	8 m	15	35	25	35	37 6101
Castor, Apparatus, Swivel*	60	24	83	12 m	25	41	21	50	37 6102
Castor, Apparatus, Swivel*	80		104				25		
Castor, Apparatus, Swivel*	100		121				32	37 6104	

*Threaded stem swivel castor

Description	Wheel Diameter (D)	Thread Width (b)	Overall Height (H)	Plate Dimensions (A x B)	Hole Spacing (a x b)	Hole Width (e)	Offset (E)	Pedal Length	Carrying Capacity (kg)	Part Number
Castor, Apparatus, Swivel Top**	50	20	68	55 x 55	40 x 40	6	25	76	35	37 8101
Castor, Apparatus, Swivel Top**	60	24	85	60 x 60	45 x 45		21	84	50	37 8102
Castor, Apparatus, Swivel Top**	80		106				25	91	55	37 8103

**Swivel castor with foot brake

Description	Wheel Diameter (D)	Thread Width (b)	Overall Height (H)	Stem Diameter (C)	Stem Length (F)	Plate Diameter (C)	Offset (E)	Pedal Length	Carrying Capacity (kg)	Part Number
Castor, Apparatus, Swivel***	50	20	66	8 m	15	35	25	76	35	37 9101
Castor, Apparatus, Swivel***	60	24	83	12 m	25	41	21	84	50	37 9102
Castor, Apparatus, Swivel***	80		104				25	91		
Castor, Apparatus, Swivel***	100		124				32	95	37 9104	

***Threaded stem castor with foot brake

Dimensions : Millimetres

Important Notice : This data sheet and its contents (the "Information") belong to the members of the Premier Farnell group of companies (the "Group") or are licensed to it. No licence is granted for the use of it other than for information purposes in connection with the products to which it relates. No licence of any intellectual property rights is granted. The Information is subject to change without notice and replaces all data sheets previously supplied. The Information supplied is believed to be accurate but the Group assumes no responsibility for its accuracy or completeness, any error in or omission from it or for any use made of it. Users of this data sheet should check for themselves the Information and the suitability of the products for their purpose and not make any assumptions based on information included or omitted. Liability for loss or damage resulting from any reliance on the Information or use of it (including liability resulting from negligence or where the Group was aware of the possibility of such loss or damage arising) is excluded. This will not operate to limit or restrict the Group's liability for death or personal injury resulting from its negligence. DURATOOL is the registered trademark of the Group. © Premier Farnell plc 2012.

www.element14.com
www.farnell.com
www.newark.com
www.cpc.co.uk
www.mcmelectronics.com

