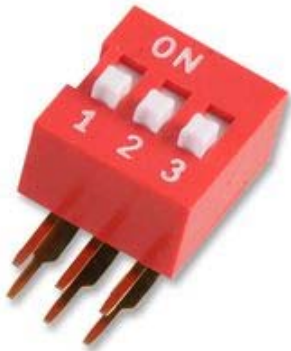
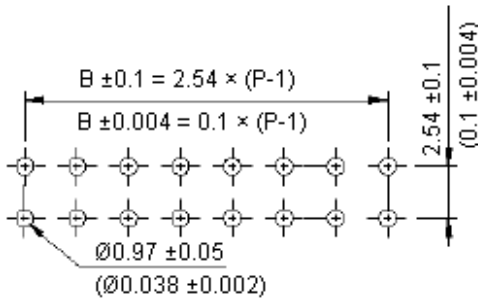
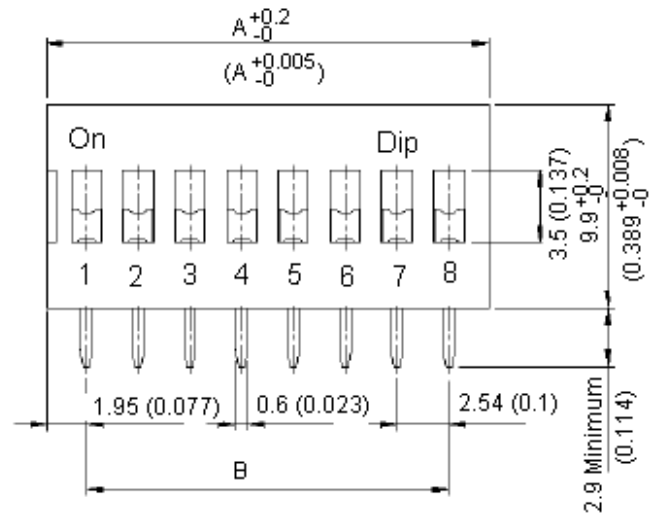
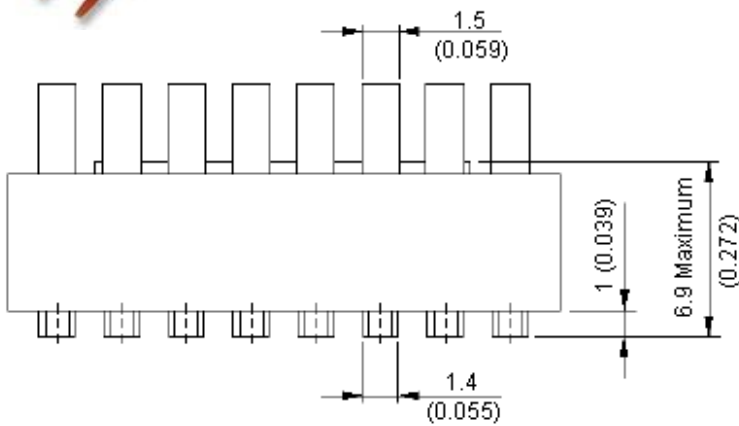


Dual In Line Switches

Right Angle and Piano Types



MCDA



PCB Layout

Schematic (Typical)



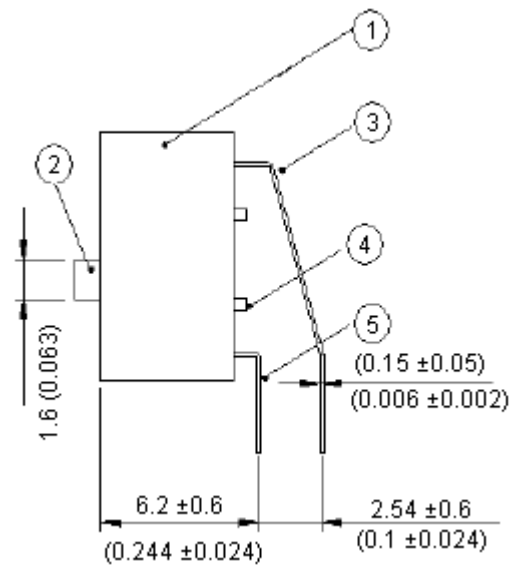
2, 3, 4, 5, 6, 7, 8, 9, 10, 12 Positions Available

Specification Table

Number of Positions	A	B	Part Number
3	8.98 (0.354)	5.08 (0.2)	MCDA03
5	14.06 (0.554)	10.16 (0.4)	MCDA05
7	19.14 (0.754)	15.24 (0.6)	MCDA07
9	24.22 (0.954)	20.32 (0.8)	MCDA09

Dimensions : Millimetres (Inches)

Dimensions : Millimetres (Inches)



Dimensions : Millimetres (Inches)

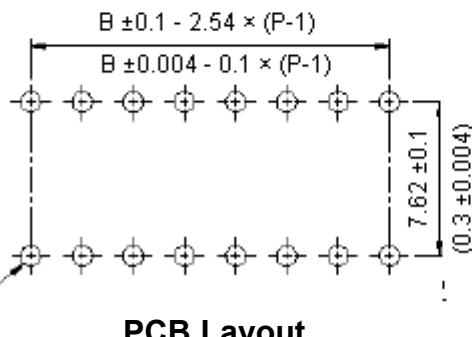
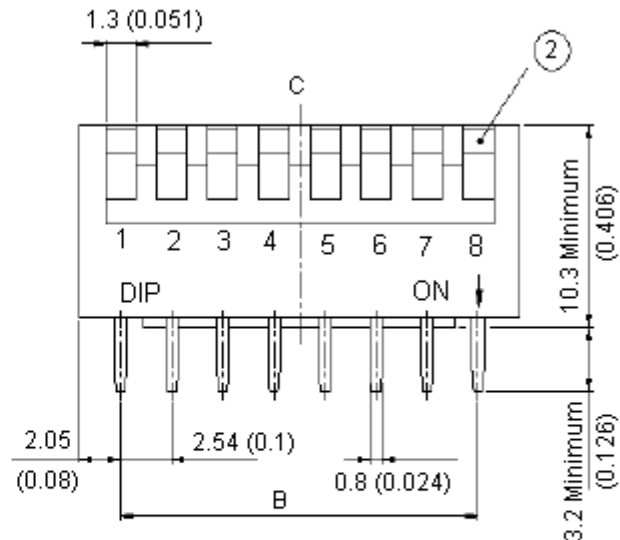
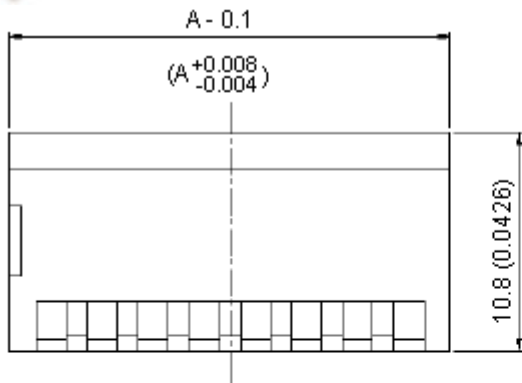


Dual In Line Switches

Right Angle and Piano Types



MCDP



PCB Layout

Dimensions : Millimetres (Inches)

Schematic (Typical)

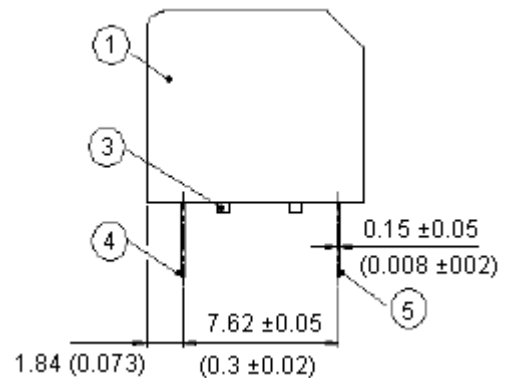


2, 3, 4, 5, 6, 7, 8, 9, 10, 12 Positions Available

Specification Table

Number of Positions	A	B	Part Number
3	9.18 (0.361)	5.08 (0.2)	MCDP03
5	14.26 (0.561)	10.16 (0.4)	MCDP05
7	19.34 (0.761)	15.24 (0.6)	MCDP07
9	24.42 (0.961)	20.32 (0.8)	MCDP09

Dimensions : Millimetres (Inches)



Dimensions : Millimetres (Inches)



Dual In Line Switches

Right Angle and Piano Types

Specifications:

Mechanical:

Mechanical Life	: 2,000 operations per switch
Maximum Operating Force	: 400 gf (MCDP series) and 1,000 gf (MCDA series)
Stroke	: 2 mm
Operating Temperature	: -20 to +70°C
Storage Temperature	: -40 to +85°C

Electrical:

Electrical Life	: 2,000 operations per switch 24 V dc, 25 mA
Non-switching Rating	: 100 mA, 50 V dc
Switching Rating	: 25 mA, 24 V dc
Maximum Contact Resistance	: 50 mΩ at initial
Minimum Insulation Resistance	: 100 MΩ at 500 V dc
Dielectric Strength	: 500 V ac / 1 minute
Circuit	: SPST

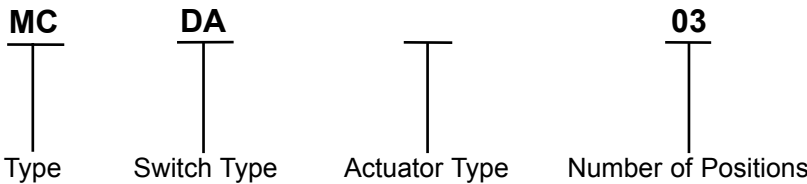
Materials:

Base	: UL 94V-0 PBT thermoplastic Colour : Black
Cover	: UL 94V-0 PBT thermoplastic Colour : Red, black and blue
Actuator	: UL 94V-0 PBT high thermoplastic Colour : White
Contact	: Phospor bronze with gold plating over nickel
Top Seal	: Polyester film
Potting Material	: Epoxy

Soldering Process:

Keep all switch contacts in their "OFF" position for all operations
 Wave soldering : Recommended temperature at 500°F (260°C) maximum 5 seconds for through hole type
 Hand soldering : Use a soldering iron of 30 W, controlled at 350°C approximately maximum 5 s
 Make sure switch is in "OFF" position during soldering process or it will decrease the operating force and meanwhile increase the contact resistance
 Do not wash the switch body except top tape sealed type, which suitable for spray cleaning method from top of the s / w

Part Number Explanation:



Switch Type	: DA = Right Angle Type Dip Switch DP = Piano Type Dip Switch
Actuator Type	: = Raised Actuator for MCDA series, = Short Key for MCDP series
Number of Positions	: 03 = 3 Positions 05 = 5 Positions 07 = 7 Positions 09 = 9 Positions

Important Notice : This data sheet and its contents (the "Information") belong to the members of the Premier Farnell group of companies (the "Group") or are licensed to it. No licence is granted for the use of it other than for information purposes in connection with the products to which it relates. No licence of any intellectual property rights is granted. The Information is subject to change without notice and replaces all data sheets previously supplied. The Information supplied is believed to be accurate but the Group assumes no responsibility for its accuracy or completeness, any error in or omission from it or for any use made of it. Users of this data sheet should check for themselves the Information and the suitability of the products for their purpose and not make any assumptions based on information included or omitted. Liability for loss or damage resulting from any reliance on the Information or use of it (including liability resulting from negligence or where the Group was aware of the possibility of such loss or damage arising) is excluded. This will not operate to limit or restrict the Group's liability for death or personal injury resulting from its negligence. Multicomp is the registered trademark of the Group. © Premier Farnell plc 2012.