

800 Series DC Permanent Magnet Motors

- ☞ Larger external rear output bearing for fast starts & stops
- ☞ Quiet operation
- ☞ Rotation direction: CW and CCW
- ☞ Pear shape gear box provides wide range of gear ratios
- ☞ Double-ended shaft option
- ☞ 4 to 24 VDC



Model 800HN



Model 800P

Cramer 800 Series DC Permanent Magnet Motors can be found in these applications and more:



Automatic Teller
Machings



Marine
Navigation Aids



Ticket Dispensers



Aircraft Lighting

800 Series DC Permanent Magnet Motors

Applications



ATMs

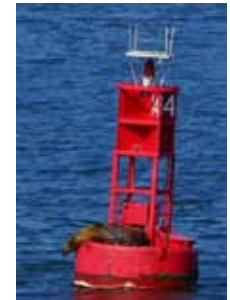


Aircraft Lighting



Ticket Dispensers

Marine Navigation Aids



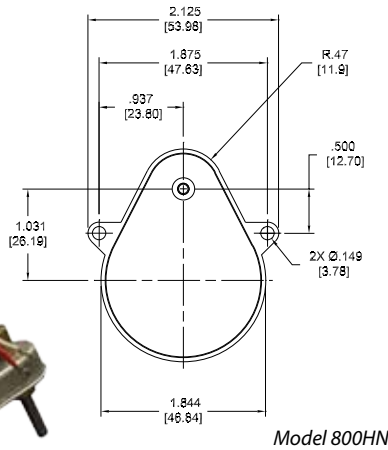
Dimensions



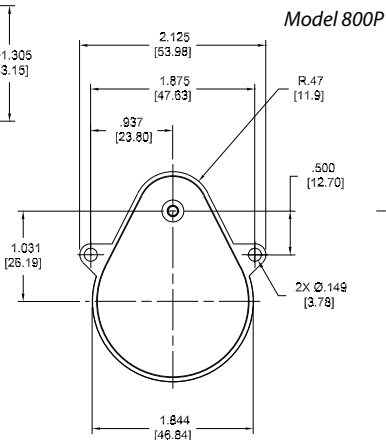
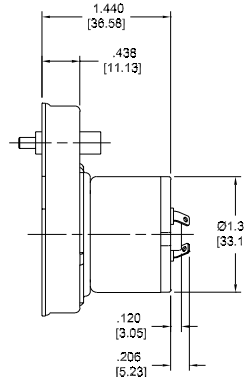
Model 800HN



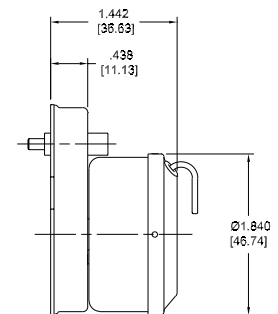
Model 800P



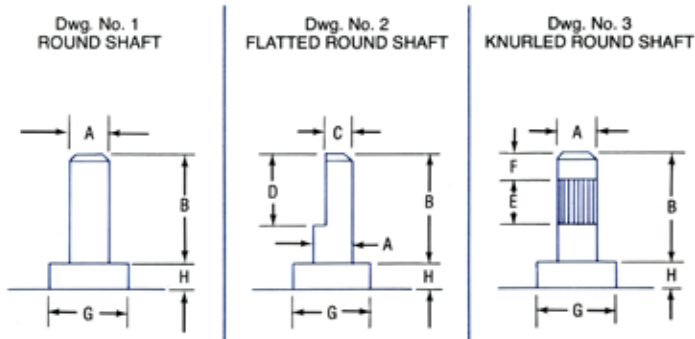
Model 800HN



Model 800P



Shaft Information



To better assist you in selecting a motor that meets your specifications, please provide the following information:

- Shaft type (round, flat or knurled)
- Shaft diameter (A)
- Shaft length (B)
- Shaft width at flat (C)
- Shaft length at flat (D)

- Knurl length (E)
- Knurl set back (F)
- Bearing OD (G)
- Bearing height (H)

For additional shaft and motor specification information, please visit www.mhrhodes-cramer.com "Shaft Information" page.

Specifications

Model	800P and 800HN
Starting Torque @ 1 RPM	60 oz. in.
Running Torque @ 1 RPM	60 oz. in.
Current Input (No load)	as low as 18 ma.
Standard Voltage	4 to 24 VDC
Operating Temperature Range	+77°F to 185°F (+25°C to 85°C)
Gear Train Rating	Standard Duty
Static	90 oz. in.
Dynamic	30 oz. in.
Noise Suppression	Varistor type
Mounting Centers (Round)	2.125 in. (53.975 mm)
Mounting Centers (Pear)	1.875 in. (47.625 mm)
Standard Mounting	2 hole
Agency Approval	N/A

Options

- Extended shafts for manual rotation of motor or actuator
- Double-ended shafts for actuation of two devices

www.mhrhodes.com



M.H. Rhodes Cramer Company
105 Nutmeg Road South • South Windsor, CT 06074 USA
Toll Free: 877.684.6464 • PH: 860.291.8402 • FX: 860.620.0897