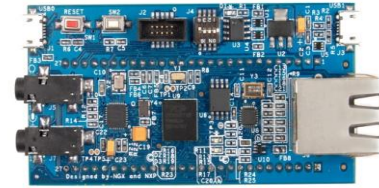


# LPC1830-Xplorer

2500Rs

LPC1830-Xplorer is a breakout board for LPC1830 cortex-M3 based microcontroller. The LPC1830 microcontroller has flash and flashless parts. For flashless microcontroller has 200KB SRAM, two 32KB SRAM blocks with separate bus. 64KB ROM containing boot code and on-chip software drivers. 32-bit OTP. For flash microcontroller 1MB dual bank flash, 136KB SRAM, Ethernet MAC, one USB 2.0 Device/Host/OTG interface with DMA support, one USB2.0 Host/Device interaface with DMA, on-chip full-speed PHY and ULPI interface to external high-speed PHY, 4 UARTS with DMA support, 2 C\_CAN 2.0B, 2 SSPs, 2 I2C, 2 I2S, LCD controller, 8 GPDMA, up to 164 GPIO, 1 10-bit DAC, 2 10-bit ADCs, and RTC.



LPC1830-Xplorer has been developed in partnership with NXP semiconductors Inc.

Salient features of the board include:

- Controller: LPC1830, 100 pin BGA
- PCB: 4-layer (86mm x 40mm, RoHS Compliant)
- Two LEDs
- One user switch and one reset switch
- Boot select switch
- 32Mb Quad flash
- On board crystals for controller, RTC and audio codec
- On board Ethernet PHY, 50 MHz Oscillator and RJ45 connector with magnetics
- On board audio codec and audio jacks
- On board USB host power switch
- On board Micro SD card slot
- Two USB ports, one HS (High speed) port and one FS (Full Speed) port
- 10-pin cortex debug header
- Unused I/Os brought to a header