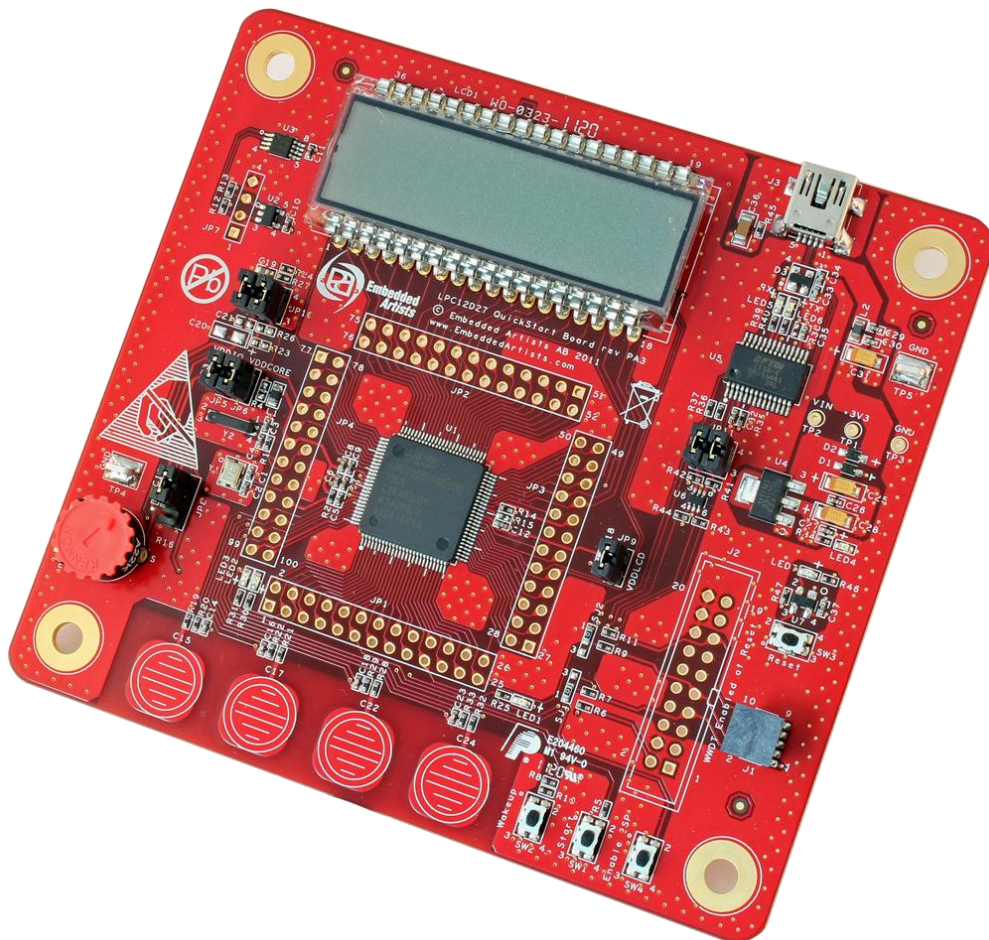


LPC12D27 QuickStart Board User's Guide



*Get Up-and-Running Quickly and
Start Developing Your Applications On Day 1!*

Embedded Artists AB

Davidshallsgatan 16
211 45 Malmö
Sweden

info@EmbeddedArtists.com
<http://www.EmbeddedArtists.com>

Copyright 2011-2012 © Embedded Artists AB. All rights reserved.

No part of this publication may be reproduced, transmitted, transcribed, stored in a retrieval system, or translated into any language or computer language, in any form or by any means, electronic, mechanical, magnetic, optical, chemical, manual or otherwise, without the prior written permission of Embedded Artists AB.

Disclaimer

Embedded Artists AB makes no representation or warranties with respect to the contents hereof and specifically disclaim any implied warranties or merchantability or fitness for any particular purpose. Information in this publication is subject to change without notice and does not represent a commitment on the part of Embedded Artists AB.

Feedback

We appreciate any feedback regarding improvements on this document. Please send comments to support@EmbeddedArtists.com.

Trademarks

All brand and product names mentioned herein are trademarks, services marks, registered trademarks, or registered service marks of their respective owners and should be treated as such.

Table of Contents

1	Document Revision History	4
2	Introduction	5
2.1	Features	5
2.2	ESD Precaution	6
2.3	General Handling Care	6
2.4	Code Read Protection	6
2.5	CE Assessment	6
2.6	Other Products from Embedded Artists	7
2.6.1	Design and Production Services	7
2.6.2	OEM / Education / QuickStart Boards and Kits	7
3	The LPC12D27 QuickStart Board Design	8
3.1	Block Diagram	8
3.2	Board Overview	9
3.3	Usage of CPU Pins	10
3.4	Schematic Walkthrough	11
3.4.1	Page 2	11
3.4.2	Page 3	11
3.4.3	Page 4	12
3.5	Default Jumper Positions	13
3.6	Things to Note about the Hardware	13
3.6.1	Rework Wire	13
4	Getting Started	14
4.1	Demo Application	14
4.2	Program Development	14
4.3	Compiling the Demo Application	14
4.4	Program Download	17
4.4.1	SWD Interface	17
4.4.2	Using LPCXpresso IDE/Debugger	18
4.4.3	UART-ISP	21
4.5	Console Interface via UART-to-USB Bridge	24
4.5.1	FTDI USB Driver	24
4.5.2	USB Driver Behavior	27
5	Further Information	28

1 Document Revision History

<i>Revision</i>	<i>Date</i>	<i>Description</i>
A	2011-11-24	First version of document.
B	2012-01-13	Added note about CE marking.

2 Introduction

Thank you for buying Embedded Artists' *LPC12D27 QuickStart Board* based on NXP's LPC12D27 ARM Cortex-M0 microcontroller with integrated LCD controller.

This document is a User's Guide that describes the *LPC12D27 QuickStart Board* hardware design.

2.1 Features

Embedded Artists' *LPC12D27 QuickStart Board* with NXP's LPC12D27 microcontroller lets you get up-and-running quickly. The small sized board offers many features that ease your learning curve and speed up your program development. The features of the *LPC12D27 QuickStart Board* are:

- NXP's LPC12D27 ARM Cortex-M0 microcontroller in 100-pin LQFP package, with 8 KByte internal SRAM and 128 Kbyte internal FLASH.
- 12.0000 MHz external crystal. The LPC12D27 runs at frequencies up to 45 MHz. With on-chip PLL the maximum frequency is 36MHz (PLL multiplies external crystal frequency by 3).
- All LPC12D27 pins available on expansion connector (100 mil/2.54 mm pitch dual rows around processor).
- UART-to-USB bridge interface to LPC12D27 UART
 - Mini-B USB connector.
 - Proper ESD protection.
 - Support for automatic UART ISP program download .
- Flexible powering, with on-board 800mA 3.3V voltage regulator
 - Can be powered from USB connector, JTAG connector (if supported by JTAG debugger interface) or an external +5V supply.
- LCD with 8 14-segment characters.
- 32 Kbit I2C E2PROM for storing non-volatile parameters.
- LM75 I2C temperature sensor.
- Trimming potentiometer on analog input.
- 4 capacitive sensors.
- "555 timer" circuit.
- Onboard reset generation and reset push-button.
- Push-button for enabling Bootloader mode of the LPC12D27.
- Push-button for enabling start logic of the LPC12D27 .
- Push-button for wakeup logic of the LPC12D27.
- Possibility to measure current consumption for LPC12D27 core, I/O and LCD controller parts individually.
- LEDs on pin PIO0_12 (active low), PIO0_27 and PIO0_28 (active high).
- SWD/JTAG connector
 - 2x5 pos, 50 mil/1.27 mm pitch, standard SWD/JTAG connector
 - Pad for older 2x10 pos, 100 mil/2.54 mm pitch JTAG connector

- Compact size: 110 x 100 mm (W x H)
 - Four layer PCB design for best noise immunity

2.2 ESD Precaution

Please note that the *LPC12D27 QuickStart Board* come without any case/box and all components are exposed for finger touches – and therefore extra attention must be paid to ESD (electrostatic discharge) precaution.

Make it a habit always to first touch the metal surface of the USB connector for a few seconds with both hands before touching any other parts of the board. That way, you will have the same potential as the board and therefore minimize the risk for ESD.



Note that Embedded Artists does not replace boards that have been damaged by ESD.

2.3 General Handling Care

Handle the *LPC12D27 QuickStart Board* with care. The board is not mounted in a protective case/box and is not designed for rough physical handling. Connectors can wear out after excessive use. The board is designed for evaluation and prototyping use, and not for integration into consumer or industrial end-products.

The *LPC12D27 QuickStart Board* has an eight character LCD. Do not exercise pressure on the display glass area. That will damage the display.

Note that Embedded Artists does not replace boards where the LCD has been improperly handled.

2.4 Code Read Protection

The LPC12D27 has a Code Read Protection function (specifically CRP3, see LPC12D27 datasheet/user's manual for details) that, if enabled, will make the LPC12D27 impossible to reprogram (unless the user program has implemented such functionality).

Note that Embedded Artists does not replace boards where the LPC12D27 has CRP3 enabled. It's the user's responsibility to not invoke this mode by accident.

2.5 CE Assessment

The *LPC12D27 QuickStart Board* is CE marked. See separate *CE Declaration of Conformity* document.

The *LPC12D27 QuickStart Board* is a class B product.

EMC emission test has been performed on the *LPC12D27 QuickStart Board*. The USB interface has been in use and also powered the device during the test. General expansion connectors where internal signals are made available (for example processor pins) have been left unconnected. Connecting other devices to the product via the general expansion connectors may alter EMC emission. It is the user's responsibility to make sure EMC emission limits are not exceeded when connecting other devices to the general expansion connectors of the *LPC12D27 QuickStart Board*.

Due to the nature of the *LPC12D27 QuickStart Board* – an evaluation board not for integration into an end-product – fast transient immunity tests and conducted radio-frequency immunity tests have not been executed. Externally connected cables are assumed to be less than 3 meters. The general expansion connectors where internal signals are made available do not have any other ESD protection than from the chip themselves. Observe ESD precaution.

2.6 Other Products from Embedded Artists

Embedded Artists have a broad range of LPC1000/2000/3000/4000 based boards that are very low cost and developed for prototyping / development as well as for OEM applications. Modifications for OEM applications can be done easily, even for modest production volumes. Contact Embedded Artists for further information about design and production services.

2.6.1 Design and Production Services

Embedded Artists provide design services for custom designs, either completely new or modification to existing boards. Specific peripherals and I/O can be added easily to different designs, for example, communication interfaces, specific analog or digital I/O, and power supplies. Embedded Artists has a broad, and long, experience in designing industrial electronics in general and with NXP's LPC1000/2000/3000/4000 microcontroller families in specific. Our competence also includes wireless and wired communication for embedded systems. For example IEEE802.11b/g (WLAN), Bluetooth™, ZigBee™, ISM RF, Ethernet, CAN, RS485, and Fieldbuses.

2.6.2 OEM / Education / QuickStart Boards and Kits

Visit Embedded Artists' home page, www.EmbeddedArtists.com, for information about other *OEM / Education / QuickStart* boards / kits or contact your local distributor.

3 The LPC12D27 QuickStart Board Design

This chapter describes the hardware design of the LPC12D27 QuickStart Board.

3.1 Block Diagram

The block diagram in Figure 1 below gives a quick overview of a design. It illustrates the major components in the design. The center of the design is the LPC12D27 MCU with integrated segment LCD controller from NXP. A number of external peripherals are connected to the LPC12D27 via I2C interface, analog inputs and digital I/O.

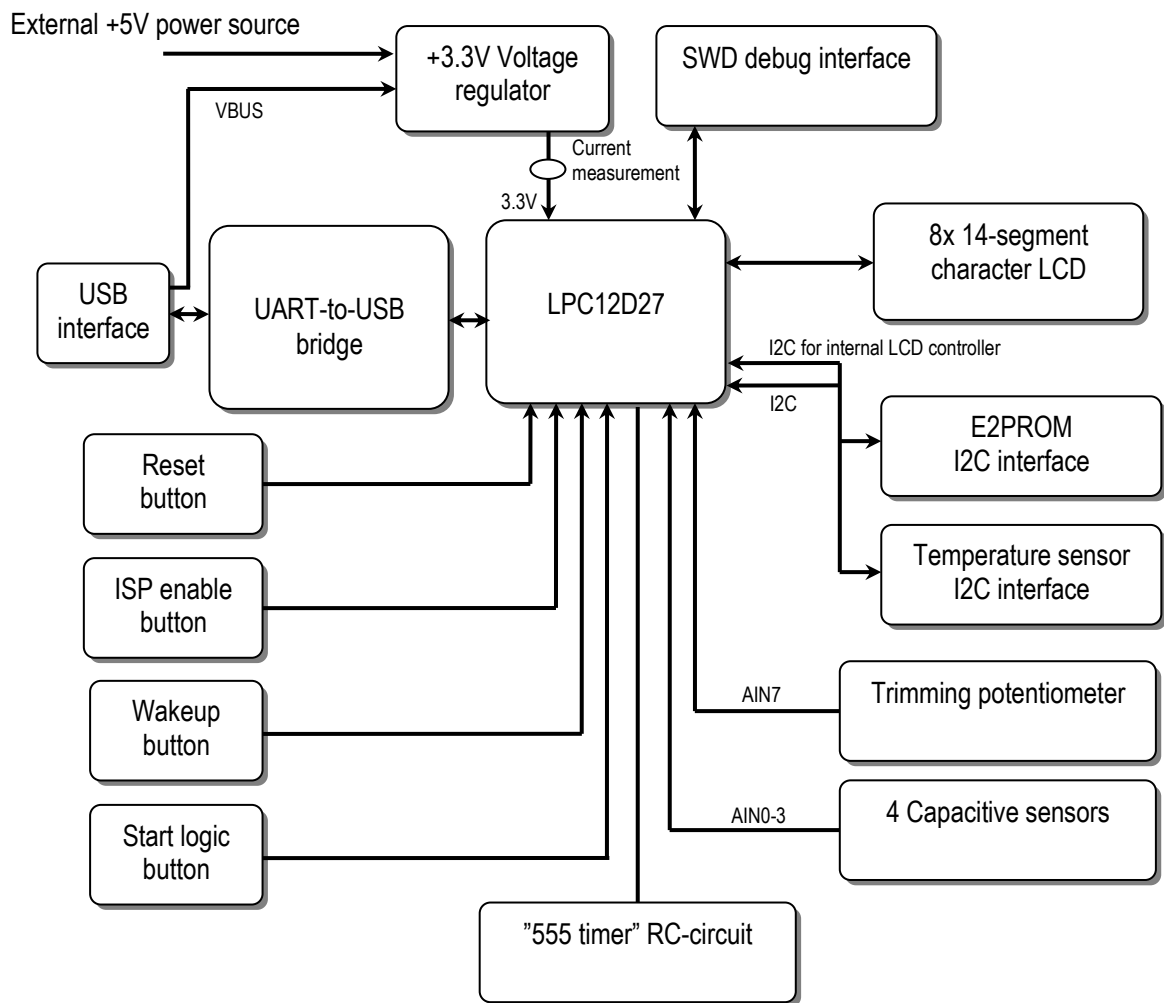


Figure 1 – LPC12D27 QuickStart Board Block Diagram

3.2 Board Overview

Figure 2 below illustrates the physical board structure.

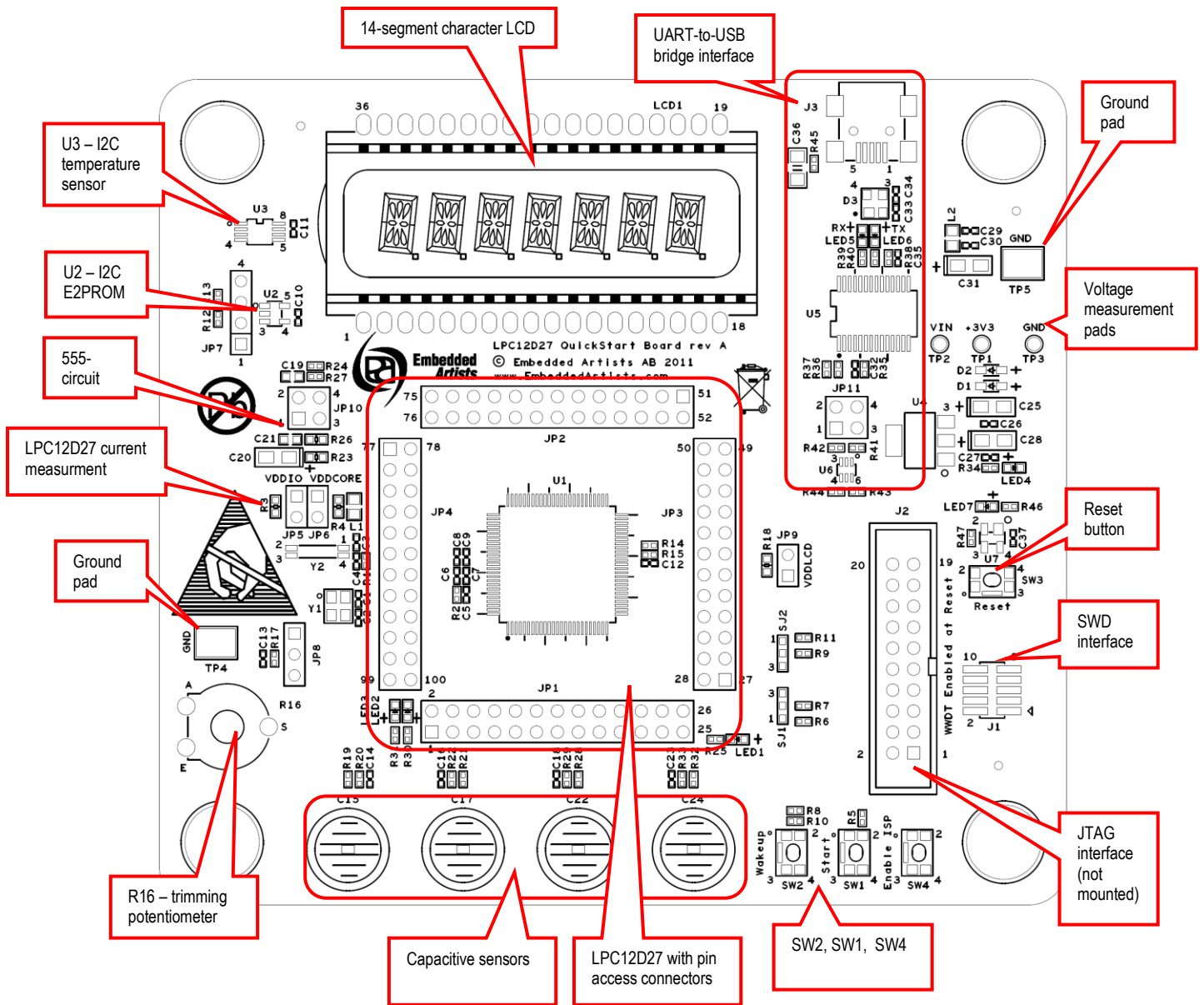


Figure 2 – LPC12D27 QuickStart Board Overview

3.3 Usage of CPU Pins

The table below lists which LPC12D27 pins that are used in the design. Many of the pins are free to use in customer extensions. All pins of the LPC12D27 are accessible via 100 mil pitch connectors around the chip on the pcb.

LPC12D27 pin	Usage
PIO0_0	Not used
PIO0_1	UART-RX, connected to uart-to-usb bridge
PIO0_2	UART-TX, connected to uart-to-usb bridge
PIO0_3	Not used
PIO0_4	Not used
PIO0_5	Connected to <i>Start Logic</i> push-button.
PIO0_6	Not used
PIO0_7	Not used
PIO0_8	Not used
PIO0_9	Not used
PIO0_10	I2C-SCL
PIO0_11	I2C-SDA
PIO0_12	ISP enable push-button. Connected to LED. Active low.
PIO0_13	Reset
PIO0_14	Not used
PIO0_15	Not used
PIO0_16	Not used
PIO0_17	Not used
PIO0_18	SWD interface SWCLK (alternative position)
PIO0_19	CMP0_0 – connected to capacitive sensor #0
PIO0_20	CMP0_1 – connected to capacitive sensor #1
PIO0_21	CMP0_2 – connected to capacitive sensor #2
PIO0_22	CMP0_3 – connected to capacitive sensor #3
PIO0_23	Connected to “555” circuit for emulation of an RC-timer
PIO0_24	CMP1_1 – connected to trimming potentiometer (alternative position)
PIO0_25	SWD interface SWDIO (default position)
PIO0_26	SWD interface SWCLK (default position)
PIO0_27	Connected to LED. Active high.
PIO0_28	Connected to LED. Active high.
PIO0_29	Connected to “555” circuit for emulation of an RC-timer

PIO0_30	Not used
PIO0_31	Not used
PIO1_0	Not used
PIO1_1	Not used
PIO1_2	SWD interface SWDIO (alternative position)
PIO1_3	Connected to <i>Wakeup</i> push-button
PIO1_4	AIN6 – connected to trimming potentiometer (default position)
PIO1_5	Not used
PIO1_6	Not used
PIO2_0	Not used
LCD signals	Connected to 14-segment character LCD

3.4 Schematic Walkthrough

3.4.1 Page 2

The center of the board is the LPC12D27 from NXP. It is a MCU based on the ARM Cortex-M0 core. LPC12D27 has many power modes to save power consumption. See datasheet for details. It is possible to measure the current consumption of the LPC12D27, both VDDIO and VDDCORE. Normally both jumpers in JP5/JP6 are inserted but if removed there are 5 ohm resistors that can be used for measuring the current consumption. 10mA current will give a 50mV voltage drop over a 5 ohm resistor. On page 3 in the schematic there is also possibility to measure the current consumption to the integrated LCD controller.

All pins of the LPC12D27 are directly accessible via JP1-JP4. These connection points are placed around the LPC12D27 chip on the board.

J1 is the SWD interface for LPC12D27, i.e., debug interface. It is the new and smaller footprint standard ARM debug connector. It has 2x5 pins in 50 mil pitch. There are also pads, J2, for the older and bigger debug connector standard, the 2x10 pos, 100 mil pitch shrouded IDC connector. If needed, this connector can be mounted.

SW1 is a start logic push button for waking the LPC12D27 from different low-power modes. Many pins can have this functionality. PIO0_5 has been selected for this board.

SW2 is a wake-up push button for waking the LPC12D27 from 'deep power down mode'. SW2 is connected to PIO1_3, which is the WAKEUP pin. A high-to-low transition on this pin will wake-up the LPC12D27 from 'deep power down mode'. PIO1_3 is the only pin that can wake-up the LPC12D27 from this mode.

3.4.2 Page 3

The integrated segment LCD controller is a separate chip inside the LPC12D27 package. It is the PCF8576D chip that is used. The MCU communicates with the LCD controller via I²C. All pins from the LCD controller are connected to the 14-segment LCD on the board. It is possible to measure the current consumption of the PCF8576D. Normally a jumper in JP9 is inserted but if removed there are 5 ohm resistors that can be used for measuring the current consumption. 10mA current will give a 50mV voltage drop over a 5 ohm resistor.

There is also a 32 kbit E²PROM and temperature sensor connected to I²C bus. The schematic show the I²C addresses of the different I²C devices. Details about the E²PROM, temperature sensor and LCD controller operations can be found in the respective datasheets.

There are two on-board 2Kohm pull-up resistors (pull-ups are always needed on I²C busses).

R16 is a 22K trimming potentiometer for simulating an arbitrary analog input signal. R16 can be connected to either analog input 6 (AD6), PIO1_4, or to comparator #1 input #1, PIO0_24.

There are four capacitive sensors connected to comparator #0 input 0-3 (PIO0_19, PIO0_20, PIO0_21, PIO0_22).

There is a RC-network (R24, R27, C19) for testing the "555 timer" functionality mode of comparator #1. If these fixed values cannot be used, both jumpers on JP10 can be removed. It is then possible to solder the values that are needed on R23, R26, C20/C21 positions. See the LPC12D27 Users Manual for details about the "555 timer" functionality.

There are three LEDs connected to the high-current capability outputs, PIO0_12 (active low) and PIO0_27 and PIO0_28 (active high). A 1Kohm resistor limits the diode current to about 1.7mA. See the datasheet for details about high-current capabilities of these pins.

3.4.3 Page 4

The UART-to-USB bridge is based on FT232RL and connects to the LPC12D27 UART. Functionality for automatic ISP activation is also included. This can be disabled by removing JP11 jumpers (which controls reset signal and bootload enable signal – PIO0_12). The USB interface is protected by ESD protection diode, D3.

SW3 is a reset push-button connected to a voltage supervisor that generates proper reset pulses when needed. See datasheet of U7 for details.

SW4 is an 'ISP enable' push-button. By pressing SW4 while resetting the LPC12D27 (pressing and releasing SW3) the In-System Programming (ISP) mode is entered. It is an internal boot loader mode of the LPC12D27. Communication takes place over the UART.

Note that it can be useful to enter ISP mode if the application program has programmed the internal PLL:s wrong, or disabled the debug/SWD interface. In these situations, it can be impossible to get contact with the LPC12D27 via the debug/SWD interface. The application program can be erased while in ISP mode and a new, correct application program can be downloaded.

The on-board 3.3V supply can be powered from the USB interface or from an external +5V supply. There is a LED that signals that +3.3V is present on the board. There are also two ground pads (TP4, TP5) for simplifying connection the ground cable of measurement devices, for example oscilloscope probes.

3.5 Default Jumper Positions

The default positions for the 8 jumpers on the board are shown below.

Note that some boards are incorrectly delivered with both jumpers in JP11 inserted.

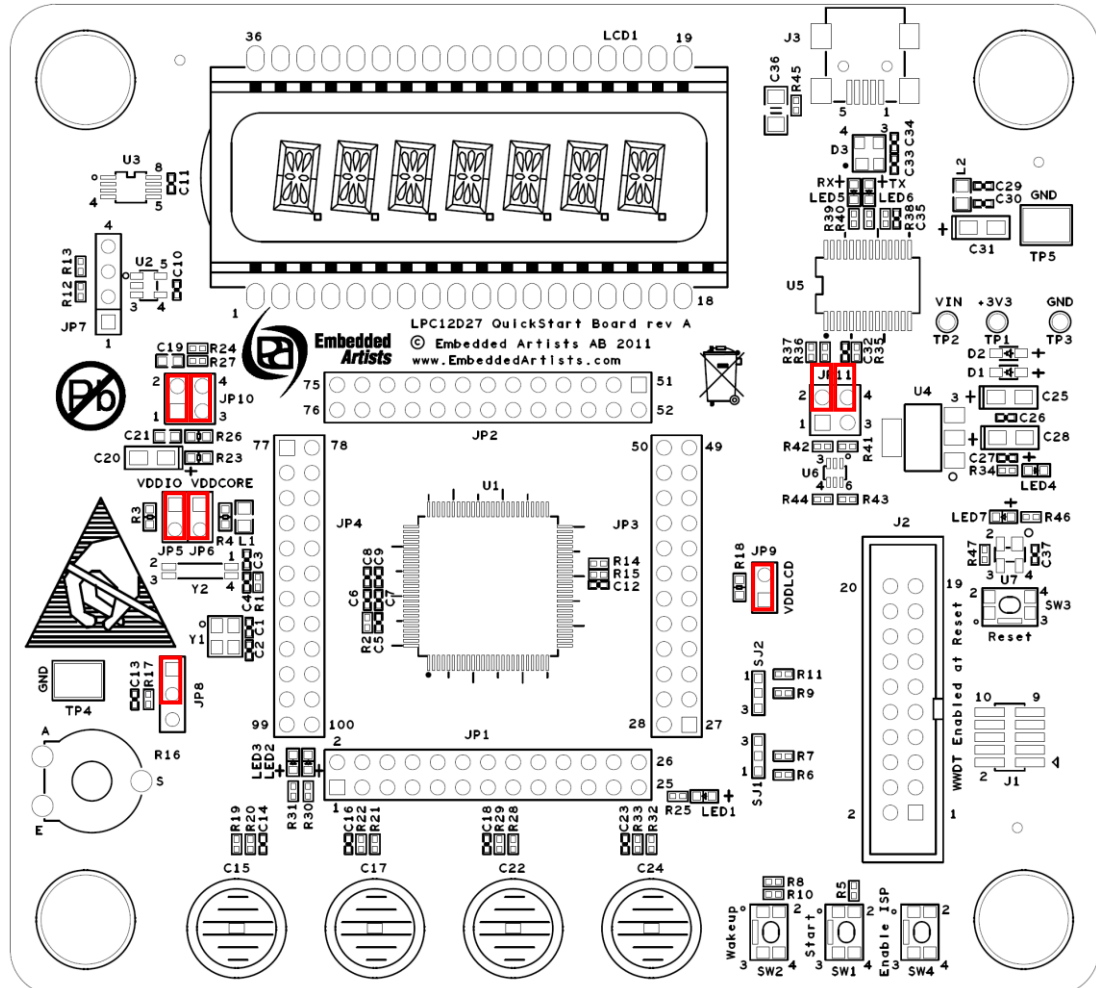


Figure 3 – LPC12D27 QuickStart Board Default Jumper Positions

3.6 Things to Note about the Hardware

3.6.1 Rework Wire

Revision A of the board contains a layout error that affects the trimming potentiometer, R16. There is a rework wire on the bottom side of the board to fix this problem.

4 Getting Started

This chapter contains information about how to get acquainted with the *LPC12D27 QuickStart Board*. **Please read this chapter first before start using the board - it will be well spent time!**

4.1 Demo Application

The board is preloaded with a demonstration application. This application begins with outputting a welcome message on the character LCD as well as over the UART.

The LEDs on PIO0_12/PIO0_27/PIO0_28 are toggled and the four capacitive sensors are active. Touching one of the capacitive sensors will activate a sub application:

- Cap sensor #0: Display the value of the trimming potentiometer
- Cap sensor #1: Display status of the 3 push buttons (SW1, SW2, SW4)
- Cap sensor #2: Display the reading from the I²C temperature sensor
- Cap sensor #3: Display the results of (startup) testing the I²C E²PROM and the RTC alternating

4.2 Program Development

This document does not contain information about how to write applications for the LPC12D27.

For information about how to get started with program development in general, see the LPCXpresso IDE documentation: www.nxp.com/lpcxpresso. LPCXpresso is a concept from NXP, containing both a program development environment (LPCXpresso IDE) and target boards – LPCXpresso boards (jointly developed by Embedded Artists). The target boards also contain a SWD/JTAG interface, called the LPC-LINK. The LPCXpresso IDE is free and well-supported on the LPCXpresso forum. It is recommended to use for program development on the *LPC12D27 QuickStart Board*.

The demo application for the *LPC12D27 QuickStart Board* can be downloaded from the Embedded Artists support site. This application has been developed in the LPCXpresso IDE. It is a good starting point for further development since it demonstrates all peripherals of the board and many features of the LPC12D27 processor.

4.3 Compiling the Demo Application

This section describes how to compile the demo application.

First make sure that the latest version of the LPCXpresso IDE is installed.

Secondly, import the package containing the demo application into the Eclipse workspace. The package can be downloaded (as a zip-file) from Embedded Artists support page after registering the product. The zip-file contains all project files and is a simple way to distribute complete Eclipse projects.

Select the *Import and Export* tab in the Quickstart menu and then *Import archived projects (zip)*, see figure below.

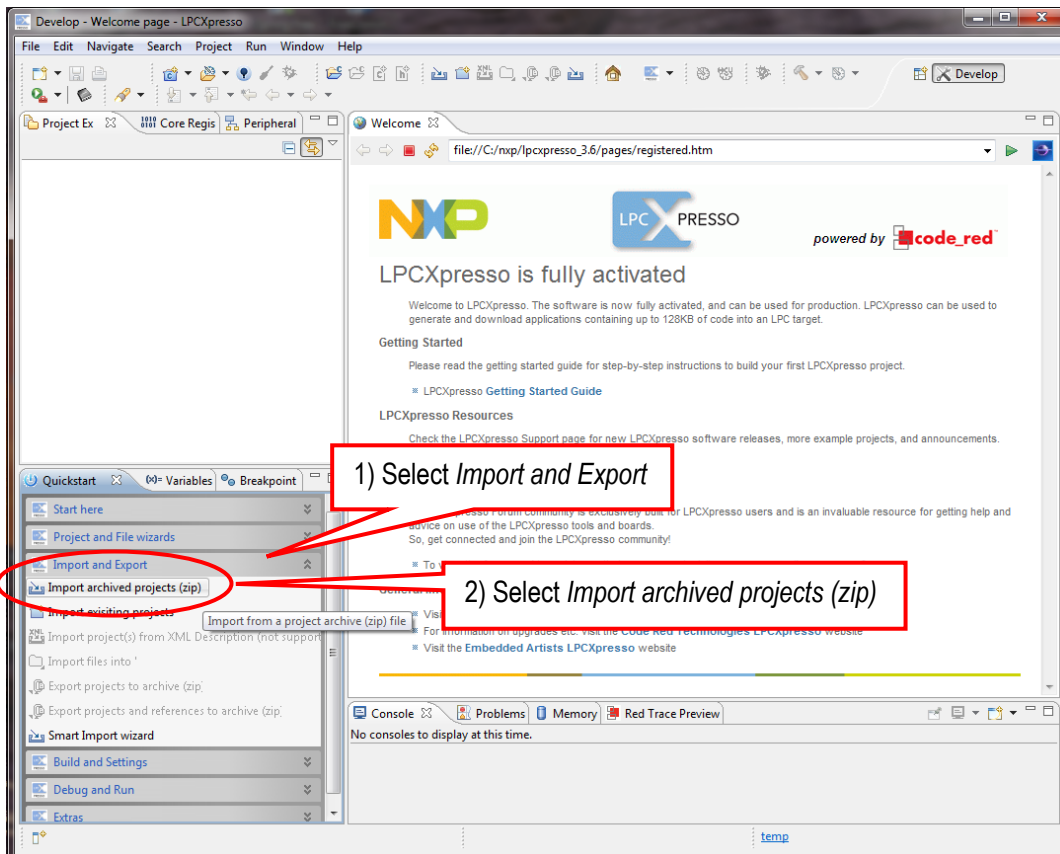


Figure 4 – LPCXpresso IDE Import Archived Project

Next, browse and select the downloaded zip file containing the archived sample applications. Make sure all sub-projects are selected, see figure below.

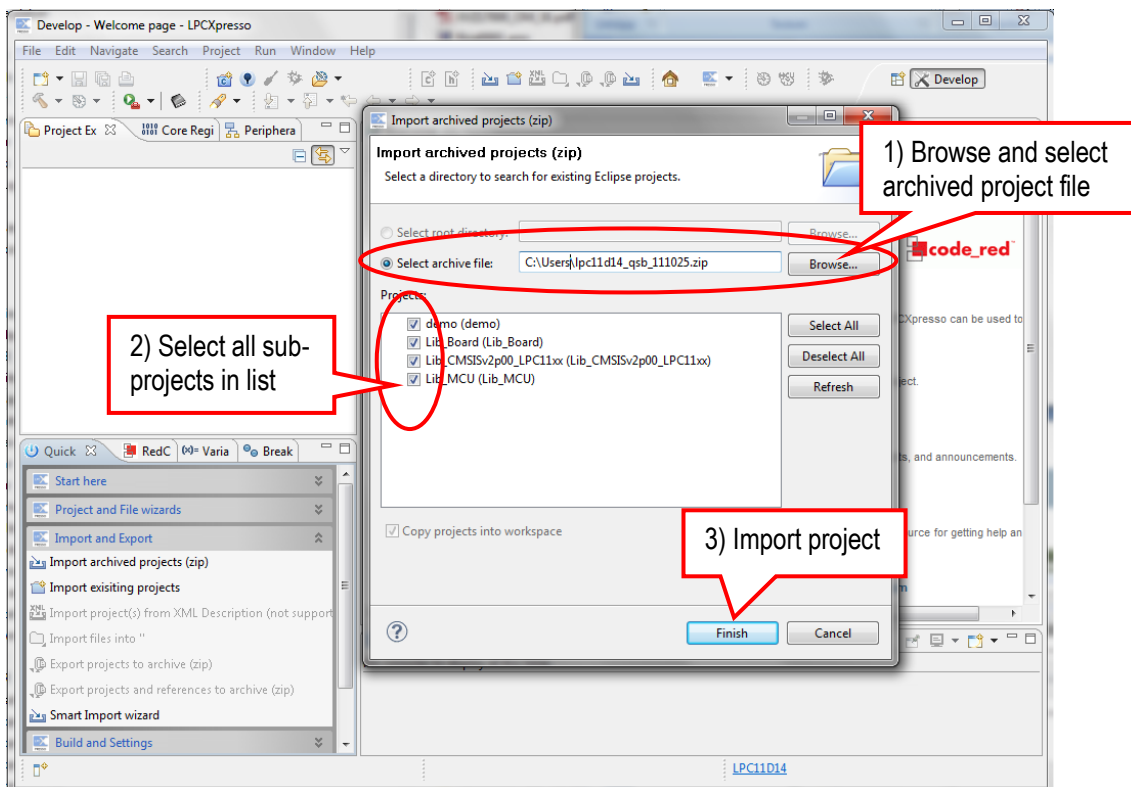


Figure 5 – LPCXpresso IDE Import Archived Project Window

All sample projects are now imported. Click (to select) the project named 'demo'. Browse and edit the project files. Build/clean/debug the project from the Quickstart menu (*Start here*), see picture below.

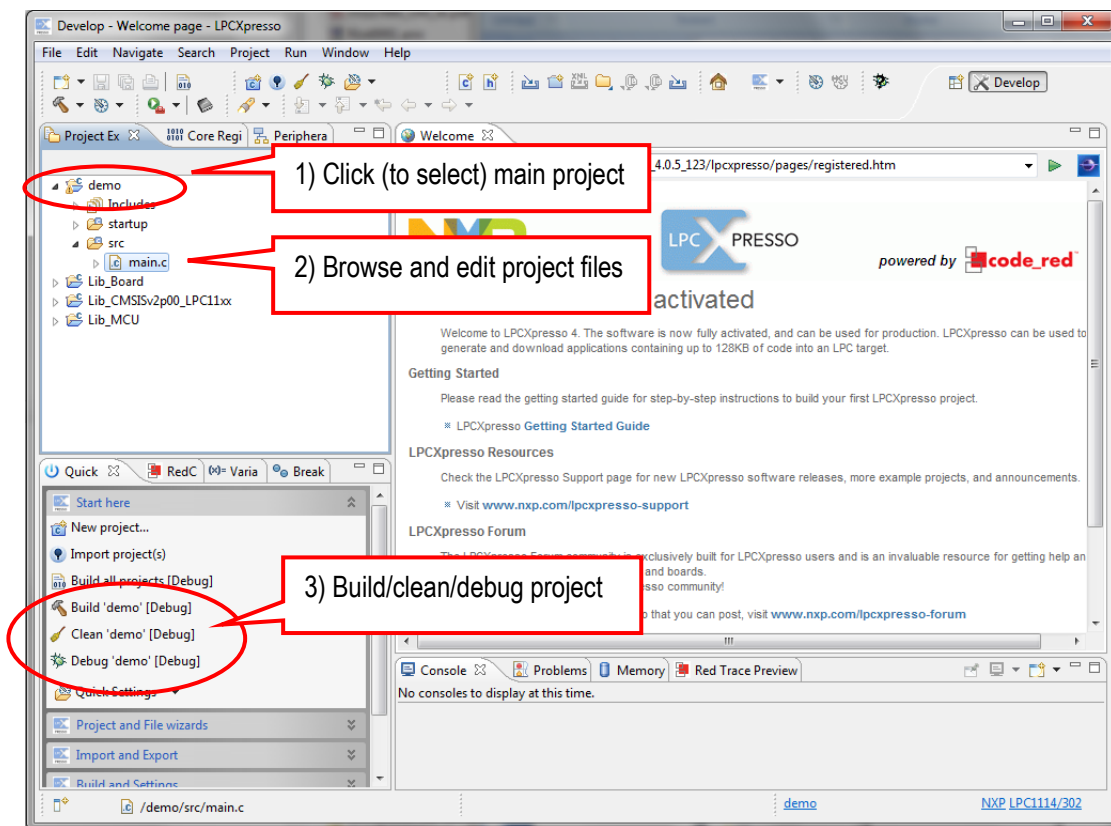


Figure 6 – LPCXpresso IDE Build/Debug Project

When debugging a project, make sure the *LPC12D27 QuickStart Board* is connected to the LPC-LINK debugger (see section 4.4 for a description). It is via LPC-LINK (SWD debug interface) that the application will be downloaded to the board. It is also via this interface that the actual debugging can take place by setting breakpoints, inspecting variable values, etc.

Using the *Debug project* functionality is the normal way of downloading an application to the LPC12D27. Section 4.4 describes how to download an application (binary image/hex-file) in general, without debugging it.

Sometimes an error message appears when trying to debug a project, i.e., download code. There are a couple of things to check:

1. Make sure last debug session has been ended.
2. Make sure the LPC-LINK is properly installed and connected. Especially check polarity of the small 10 pos SWD cable. Pin 1 in each end shall match each other.
3. Make sure that the LPC12D27 is in a mode where the debugger can take command over the processor. When the LPC12D27 is in a low-power mode it sometimes prohibits the debugger from connecting to the processor. The simplest way is to place the LPC12D27 in ISP/bootload mode. While resetting the LPC12D27 press the ISP Enable push-button.
 - a. Press both Reset (SW3) and ISP push-button (SW4)
 - b. Release the Reset push-button
 - c. Release the ISP push-button
 - d. The LPC12D27 is now in ISP/bootload mode.

4.4 Program Download

There are two ways to download applications in to the LPC12D27.

4.4.1 SWD Interface

The SWD interface is the recommended interface to use for program download since it also has the added benefit of being a debug interface useful during program development. How to use the debugger via LPCXpresso IDE is described in previous section 4.3 . Any SWD debug interface that supports ARM Cortex-M0 processors in general and the LPC1100 family in particular will work for downloading an application. Figure 7 below shows how the LPC-LINK (part of an LPCXpresso target board) is connected to the SWD interface of the *LPC12D27 QuickStart Board*. Note the orientation of the SWD cable. Pin 1 of the SWD connector in each end shall match each other.

An LPC-LINK unit can be created by cutting any LPCXpresso target board into half – the half that contains the embedded debugger part.



Figure 7 – LPC12D27 QuickStart Board connected to LPC-LINK, via SWD (picture show LPC11D14 board)

It is also possible to use the (physically) bigger 2x10 pos, 100 mil pitch ARM SWD/JTAG interface. Either solder a 2x10 pos, 100 mil pitch shrouded IDC connector to the *LPC12D27 QuickStart Board* or use Embedded Artists' adapter for the purpose (article number: EA-ACC-040). See Figure 8 below. Note that the SWD/JTAG debug pod used must support the SWD protocol in order to work.



Figure 8 – SWD/JTAG Adapter (EA-ACC-040)

4.4.2 Using LPCXpresso IDE/Debugger

This section describes how to download an application to the board.

2. Connect the LPC-LINK to the LPC12D27 SWD interface. Use a 10 pos flat cable. Also make sure the LPC-LINK is connected to the PC via a USB cable.
3. Make sure that the LPC12D27 is in a mode where the debugger can take command over the processor. When the LPC12D27 is in a low-power mode it sometimes prohibits the debugger from connecting to the processor. The simplest way is to place the LPC12D27 in ISP/bootload mode. While resetting the LPC12D27 press the ISP Enable push-button.
 - a. Press both Reset (SW3) and ISP push-button (SW4)
 - b. Release the Reset push-button
 - c. Release the ISP push-button
 - d. The LPC12D27 is now in ISP/bootload mode.
4. Make sure that the latest version of the LPCXpresso IDE is installed on the PC.
5. Import the sample application software package into the Eclipse workspace. This package can be downloaded from the Embedded Artists support page after registering the product. The demo application is one of the projects in the sample application package.
6. Click on the "Program Flash" icon from the tool bar, see picture below. The icon can be at different places depending on window size.

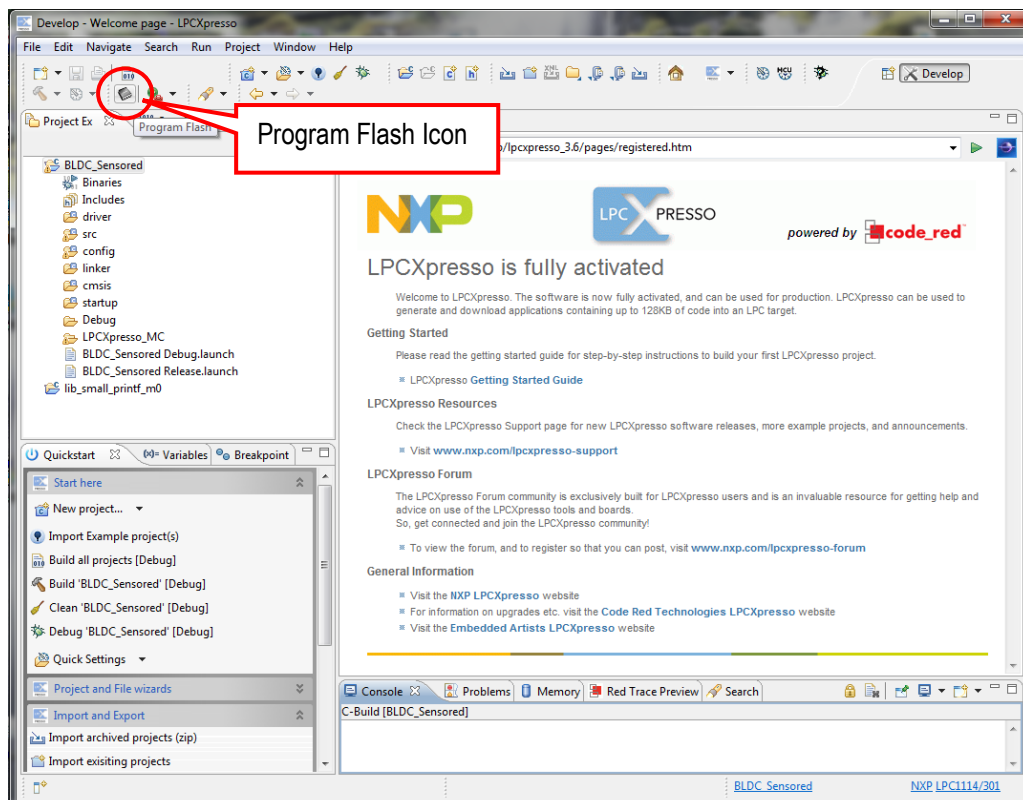


Figure 9 – LPCXpresso IDE Program Flash Icon

The next step is to select which processor to download to. Select LPC1227/301 from the list that is presented. Then press OK button. Note that this step is sometimes not needed because the LPCXpresso IDE can itself detect which processor it is connected to. Note that LPC12D27 does not exist as a separate item in the list. This is because the LPC12D27 internally consists of two chips, one LPC1227 and one PCF8576D.

The next step is to browse to the file to download. Press the “Browse” button.

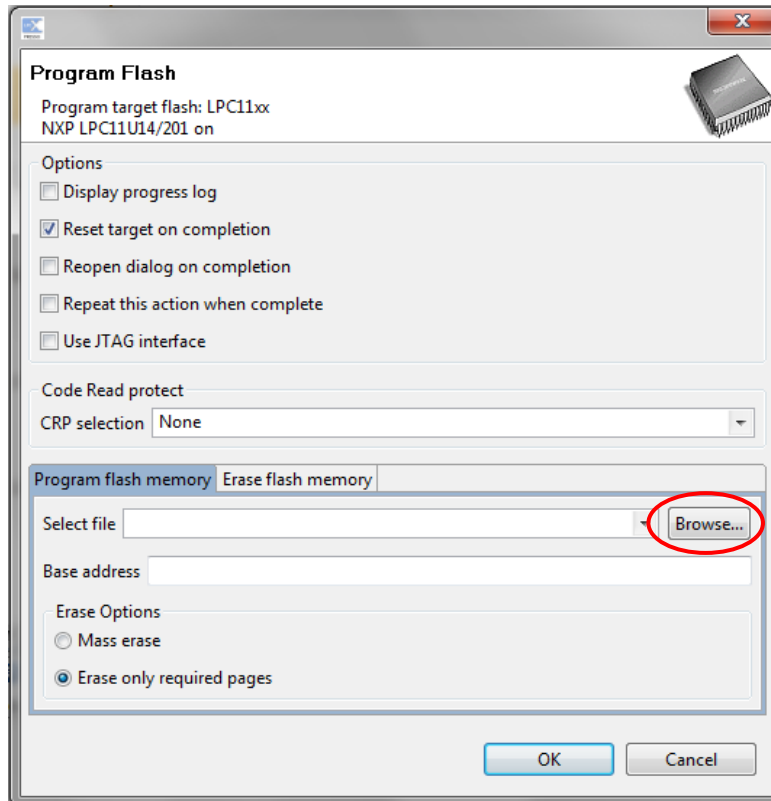


Figure 10 – LPCXpresso IDE Program Flash Window

Browse to the projects top directory and then “Debug”. In this subfolder there is either a file ending with *.axf or *.bin. Select one of these files. Press the “Open” button. Note that screen shot below is generic and does not reflect the directory structure or folder names for the LPC12D27 demo application.

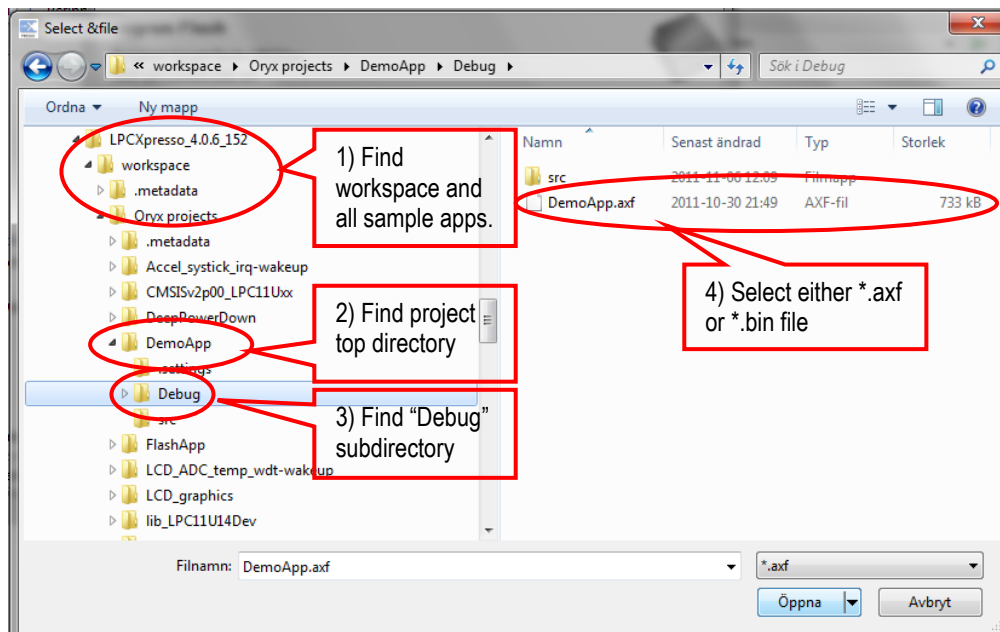


Figure 11 – Browse to File to Download

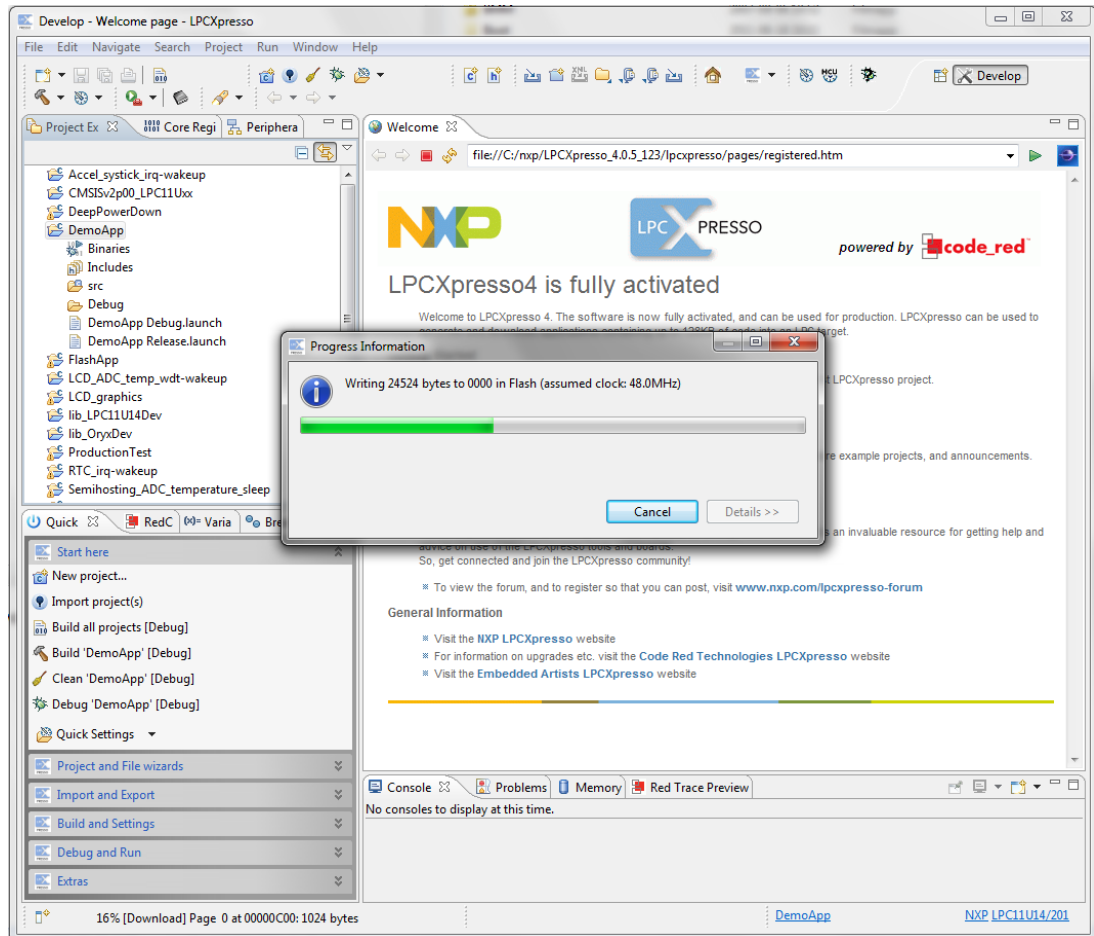


Figure 12 – LPCXpresso IDE Program Flashing in Progress

In case flashing fails, an error message like below will be displayed. This is an indication that the debugger could not connect to the LPC12D27. The most common reason is that the LPC12D27 was in a low-power mode where debug connection is not possible. Make sure the LPC12D27 is in ISP/bootload mode and try again. Also make sure the small 10-pos flat cable is connected between the *LPC12D27 QuickStart Board* and LPC-LINK.

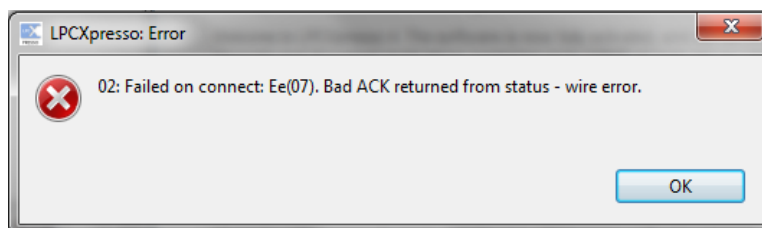


Figure 13 – LPCXpresso IDE Program Failing to Flash

There is an alternative way of initiating the program download process. From the workspace, right click on the *.axf or *.bin file (found under the “Debug” subdirectory). Then select “Binary Utility” and “Program Flash”.

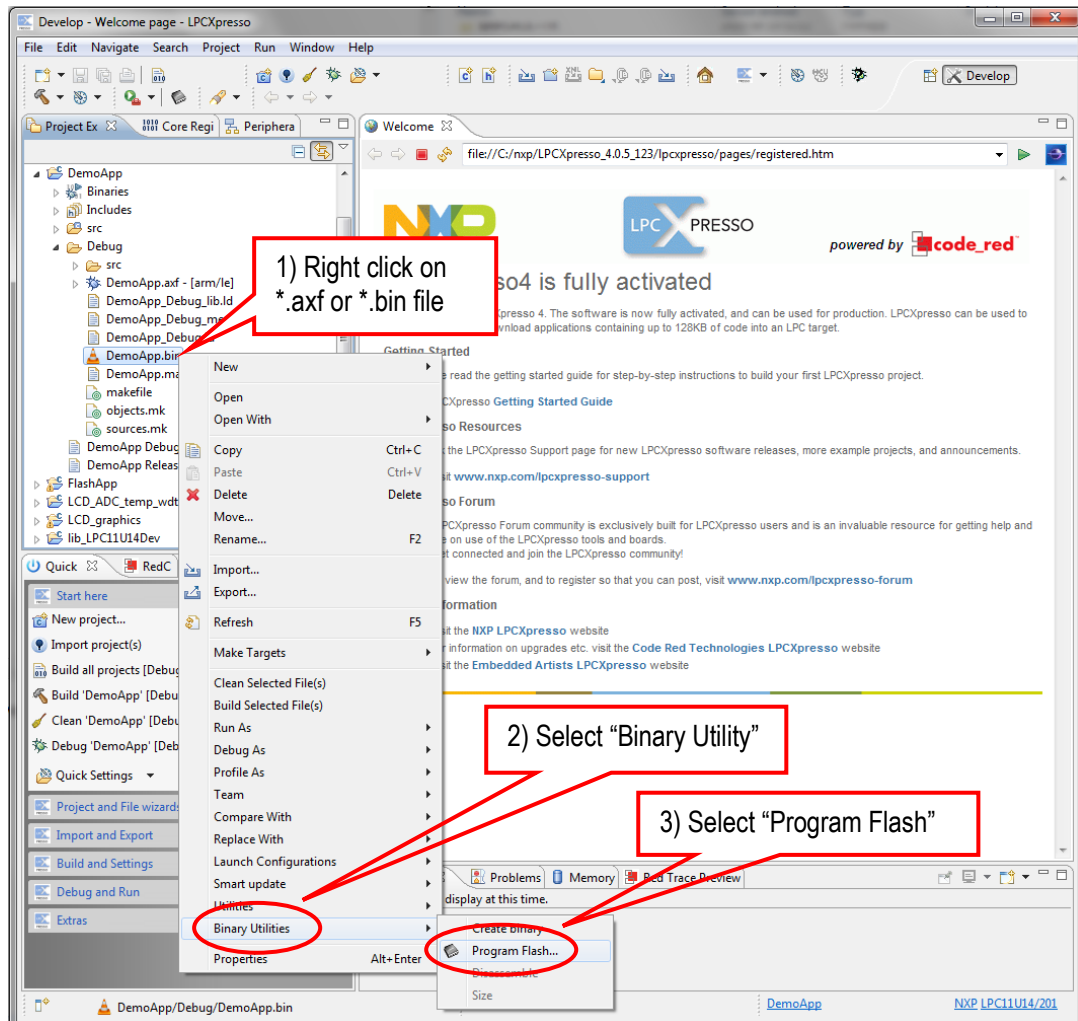


Figure 14 – LPCXpresso IDE Binary Utility

Press the reset push-button. The startup message from the demo application should be displayed on the LCD.

4.4.3 UART-ISP

The other alternative for program download is to use In-System Programming (ISP) over the UART. Note that this method does not provide any debugging functionality. It is only for downloading a binary image (often called hex-file) to the board. If debugging via a debugger is needed, the SWD interface should be used instead.

This section describes how to generate the hex file and then download the file to the *LPC12D27 QuickStart Board*.

The LPC12D27 MCU samples the state of the PIO0_12 pin immediately after a reset. If the pin is low, the UART-ISP mode is activated. By pressing the ISP Enable push-button, SW4, pin PIO0_12 is pulled low. ISP mode is activated this way:

1. Press both the ISP Enable push-button (SW4) and the reset push-button (SW3).
2. Release the reset push-button while keeping the ISP Enable push-button pressed.
3. Then finally release the ISP Enable push-button. The LPC12D27 is now in UART-ISP mode.

The sequence of steps can be done quickly. The minimum time between step 2 and 3 is in the region of 200mS (which is the reset pulse minimum time from U7 plus the time until the LPC12D27 samples the PIO0_12 pin).

By inserting both jumpers in JP11, it is possible to control the reset signal and PIO0_12 signal via the UART interface (UART-to-USB bridge) instead of via the push-buttons.

These are the steps to follow after both jumpers in JP11 have been inserted:

1. Download and install Flash Magic (<http://www.flashmagictool.com/>). Always use the latest version.
2. Build the application in the LPCXpresso IDE as mentioned in section 4.3 .
3. Open a command prompt in the directory containing the axf file. This can be done from the Utilities menu, see picture below.

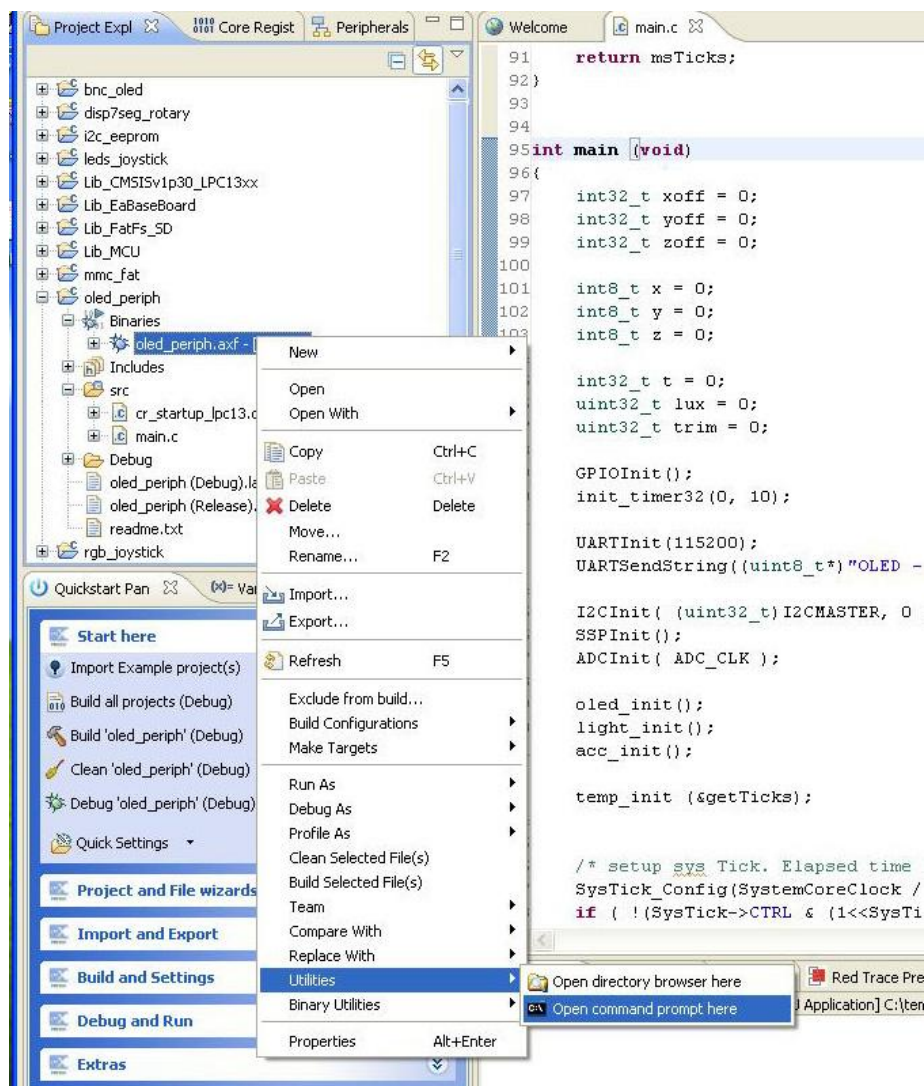


Figure 15 – LPCXpresso IDE Open Command Prompt

4. Convert the axf file to a hex file. In this example it is assumed that the sample application is named **demo**.

```
arm-none-eabi-objcopy -O ihex demo.axf demo.hex
```

5. Start Flash Magic, select correct Device, COM Port (the COM port associated with the target, section 4.5.1 describes the USB-to-UART bridge). Set baud rate to 38400, Interface to None and Oscillator to 12 MHz. Browse to the hex file to be download, see picture below.

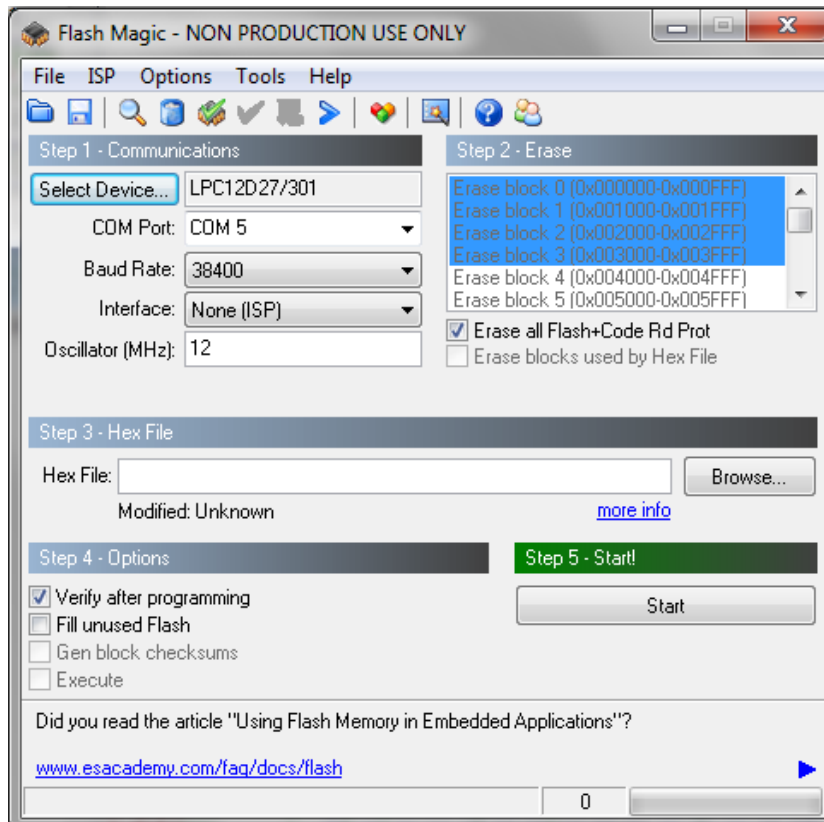


Figure 16 – Flash Magic

6. Make sure the advanced options are correctly set. Select the Options menu and then select Advanced Options. Then select the Hardware Config tab. See picture below for correct settings in order for automatic ISP activation to work. Also not that both jumpers in JP11 must be inserted on the *LPC12D27 QuickStart Board*.

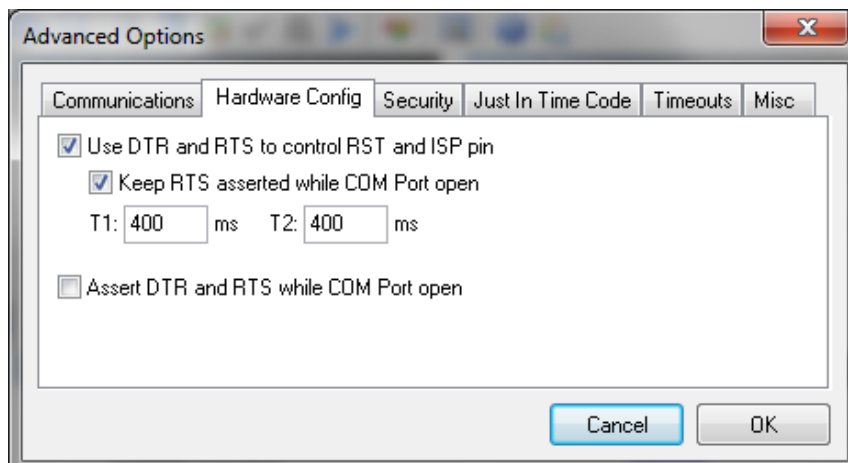


Figure 17 – Flash Magic, Advanced Options – Hardware Config

7. Click the Start button and the application will be downloaded to the target.

4.5 Console Interface via UART-to-USB Bridge

The *LPC12D27 QuickStart Board* contains a UART-to-USB bridge chip (FT232R from FTDI) that connects one of the UART channels on the *LPC12D27* MCU to a virtual COM port on the PC (via USB). It is this serial channel that is the console interface to the system.

Special USB drivers must be installed on the PC in order for the virtual COM port to be created. See subsection below for a description of how to install the FTDI USB driver.

4.5.1 FTDI USB Driver

A USB driver must be installed on the PC computer in order to get the UART-to-USB chip (FT232R) to function. Make sure to download the latest version of the driver, which can be found at the following URL: <http://www.ftdichip.com/Drivers/VCP.htm> (search for a FT232R driver for the operating system used on the PC).

When the *LPC12D27 QuickStart Board* is connected to the PC (via an USB cable) the PC will ask for a driver. Unpack/unzip the downloaded driver file and browse to the position of the driver files. After successful driver installation, a COM port will be created. Before any communication with the Board can take place the UART settings must be correctly set. The following description is valid for Windows™ XP, but other operating systems have similar dialog windows. See the USB driver documentation for details, if needed.

To change the UART settings, first open the System Properties dialog, as illustrated in the figure below.

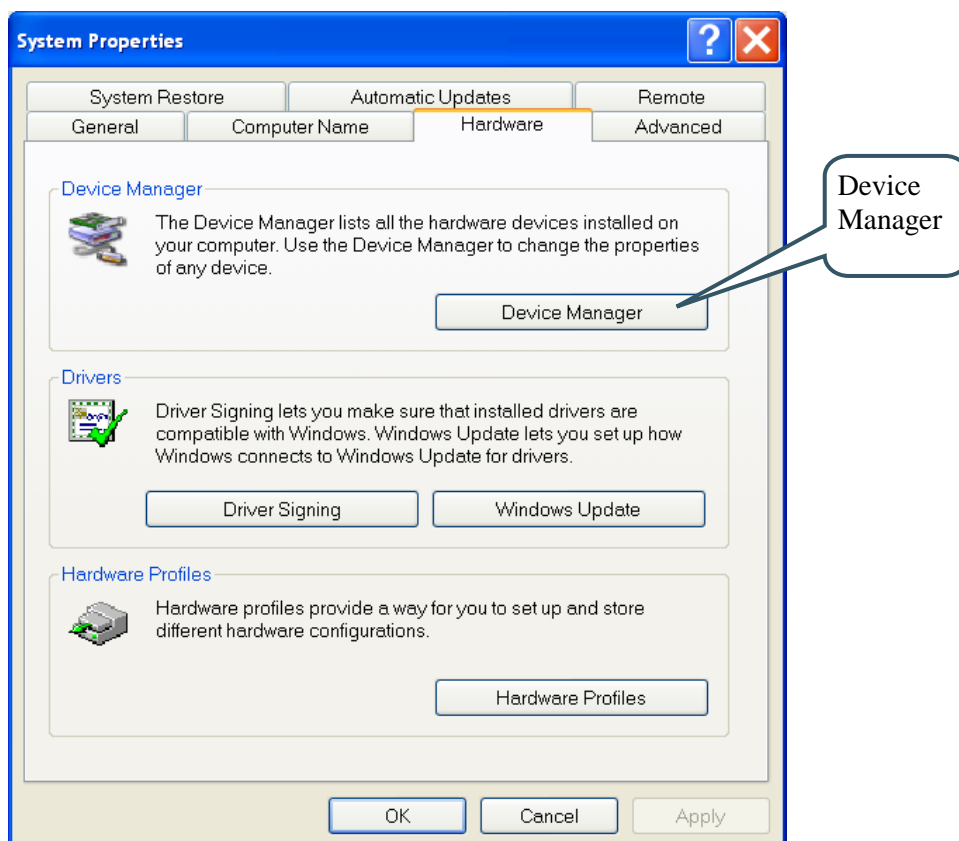


Figure 18 – System Settings Dialog

Then select the *Device Manager* and open the *Ports* list, as illustrated in Figure 19 – below.

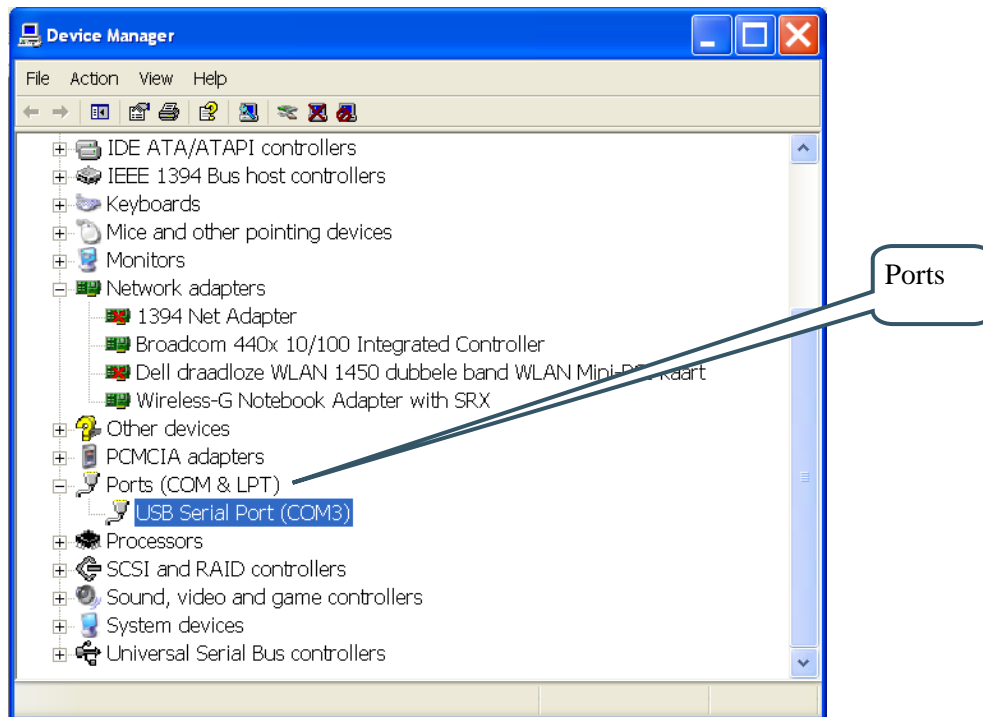


Figure 19 – Device Manager Dialog

The new COM port (USB Serial Port) will be listed under the *Ports* list. Right-click on the new USB Serial Port and select *Properties*, as illustrated in Figure 20 – below.

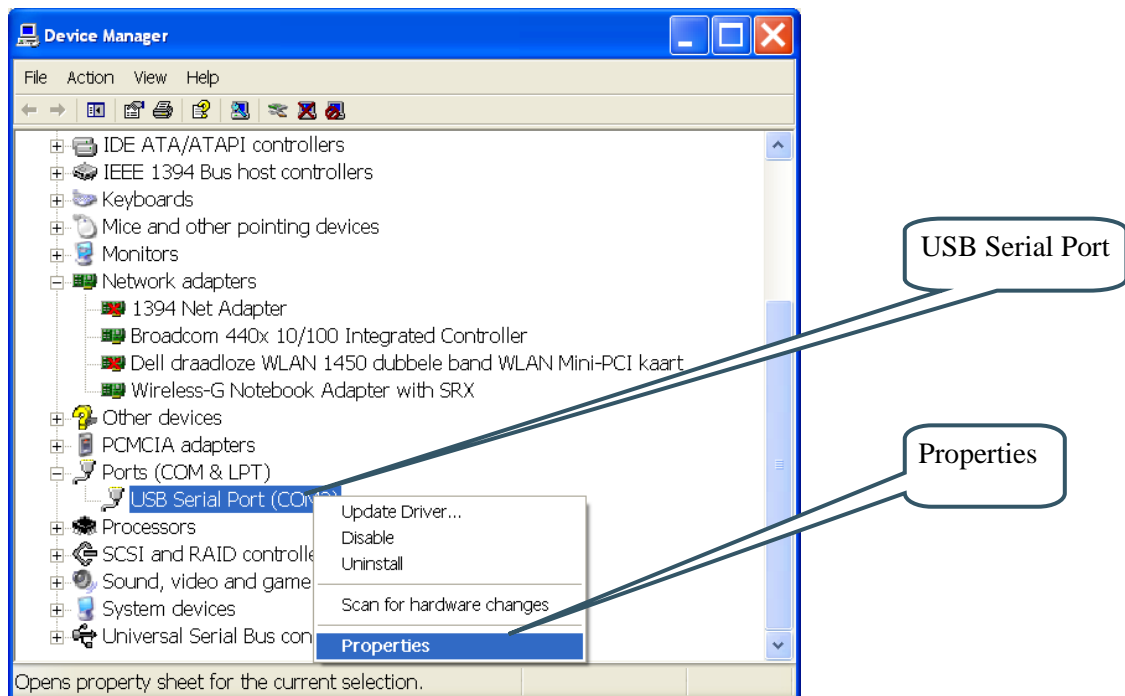


Figure 20 – Device Manager Port Dialog

Select 115200 bits per second, 8 data bits, none parity, 1 stop bit, and none flow control, as illustrated in Figure 21 – below. Then select *Advanced* settings. Please note that different application programs can use different baudrate settings for the serial channel. Other baudrates can also be used, depending on specific application.

Also note that it is normally not needed to set the used baudrate at all. The driver and FT232R chip will automatically handle different baudrates. The setting is only shown here for completeness.

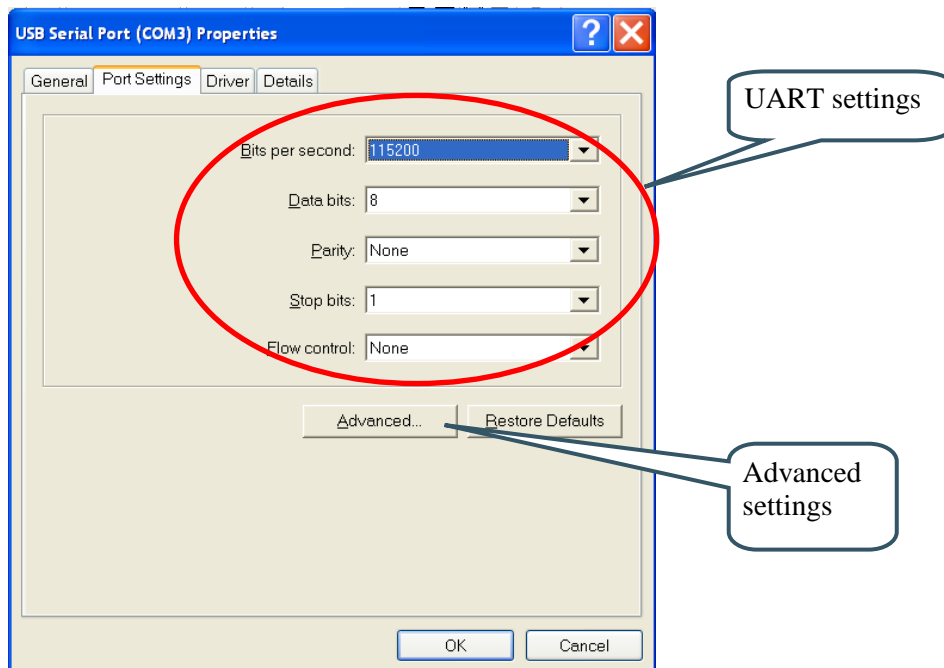


Figure 21 – USB Serial Port Properties Dialog

Select the desired COM port number under the *Advanced* settings dialog. Some terminal programs needs low COM port number, for example between 1 and 5. Very often the COM port number for the USB Serial Port is higher than this, therefore this need to be changed manually.

It is common that all COM ports with low numbers are listed as occupied, but test to change to a low number anyway. Very often it is no problem at all to do so.

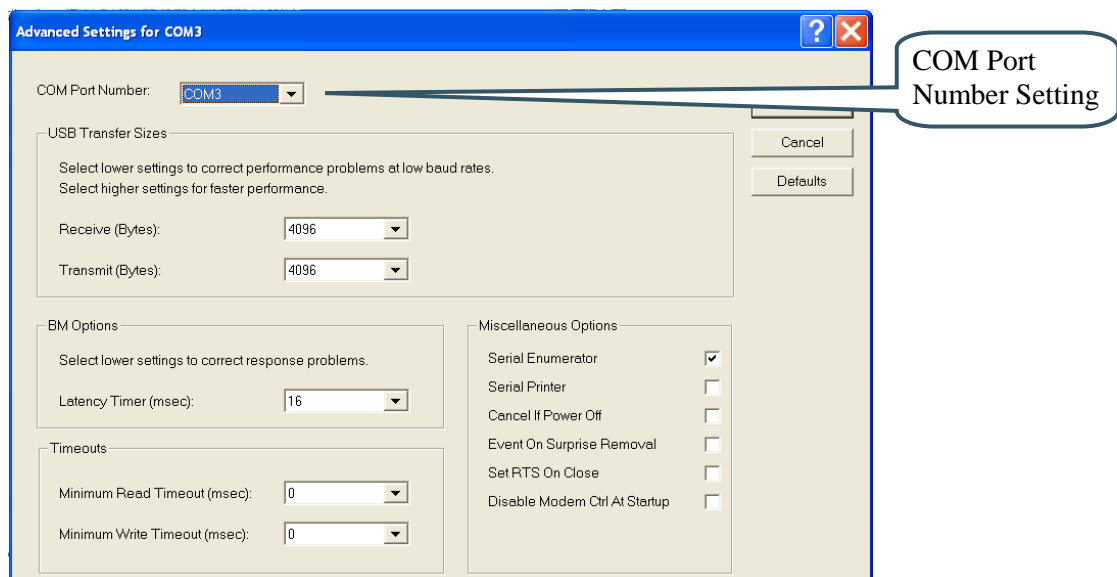


Figure 22 – Advanced USB Serial Port Properties Dialog

Finally it is time to test if the USB Serial Port has been successfully installed and configured. Start a terminal program. Connect to the correct COM port, with 38400 bits per second, 8N1, no flow control.

4.5.2 USB Driver Behavior

Sometimes the USB COM port does not enumerate properly when the board is connected to the PC. This is a known "feature" of the USB driver. If this problem occurs, just unplug the board shortly and then plug in again. A new COM port that can be accessed properly should be created the second time. This problem may occur after every time the PC is started (i.e., is power cycled).

5 Further Information

The LPC12D27 microcontroller is a complex circuit and there are a number of other documents with more information. The following documents are recommended as a complement to this document.

- [1] NXP's product page for the LPC12D27 – contains links to datasheet, user's manual, application notes and errata information
http://www.nxp.com/products/microcontrollers/cortex_m0/lpc12d00/LPC12D27FBD100.html
- [2] LPCware is the NXP MCU community where a lot of information is posted about the processors
<http://www.lpcware.com/>
- [3] ARM Processor Documentation
Documentation from ARM can be found at: <http://infocenter.arm.com/>.
- [4] Information on different ARM Architectures
<http://www.arm.com/products/processors/technologies/instruction-set-architectures.php>
- [5] ARMv6-M Architecture Reference Manual. Document identity: DDI 0419B
<http://infocenter.arm.com/help/index.jsp?topic=/com.arm.doc.ddi0419b/index.html>
- [6] Cortex-M0 Technical Reference Manual. Revision: r0p0
<http://infocenter.arm.com/help/index.jsp?topic=/com.arm.doc.ddi0432c/index.html>
- [7] LPCXpresso IDE: NXP's low-cost development platform for LPC families, which is an Eclipse-based IDE.
<http://ics.nxp.com/lpcxpresso/>
- [8] LPC1000 Yahoo Group. A discussion forum dedicated entirely to the NXP LPC1xxx series of microcontrollers.
<http://tech.groups.yahoo.com/group/lpc1000/>
- [9] LPC2000 Yahoo Group. A discussion forum dedicated entirely to the NXP LPC2xxx series of microcontrollers. This group might be more active than the LPC1000 group.
<http://tech.groups.yahoo.com/group/lpc2000/>

Note that there can be newer versions of the documents than the ones linked to here. Always check for the latest information/version.