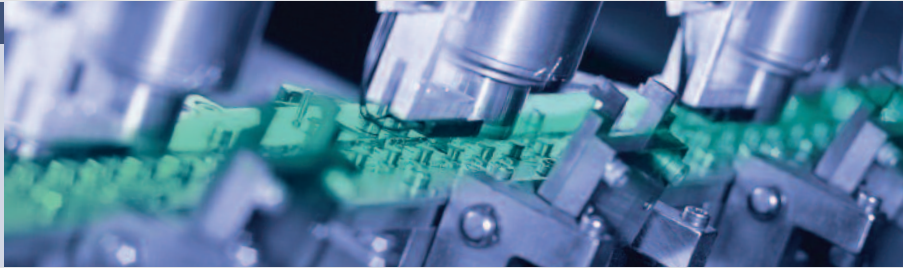




Sample Kit 2008



Chip Inductors

SIMID 0603-C

www.epcos.com

B82496X1

SMT Inductors

SIMID® 0603-C

L_R	nH	1.5	1.8	2.2	2.7	3.3	3.9	4.7	5.6
Q _{typ} (at 800 MHz)		50	50	50	40	40	40	40	40
f _L	MHz	100	100	100	100	100	100	100	100
I _R	mA	1500	1500	1500	1400	1200	1100	800	700
R _{max}	Ω	0.03	0.033	0.035	0.04	0.06	0.065	0.10	0.15
f _{res, min}	MHz	13000	12000	10000	10000	9000	8000	7000	6000
Ord. code	B82496	C3159A	C3189A	C3229A	C3279A	C3339A	C3399J	C3479J	C3569J
L_R	nH	6.8	8.2	10	12	15	18	22	27
Q _{typ} (at 800 MHz)		40	40	40	40	40	40	40	35
f _L	MHz	100	100	100	100	100	100	100	100
I _R	mA	700	650	600	450	420	400	380	360
R _{max}	Ω	0.15	0.18	0.20	0.35	0.40	0.45	0.50	0.55
f _{res, min}	MHz	6000	6000	5000	5000	4500	4000	4000	3000
Ord. code	B82496	C3689J	C3829J	C3100J	C3120J	C3150J	C3180J	C3220J	C3270J
L_R	nH	33	39	47	56	68	82	100	220
Q _{typ} (at 800 MHz)		35	35	35	35	35	35	30	25
f _L	MHz	100	100	100	100	100	100	100	25.2
I _R	mA	350	300	270	250	230	220	200	110
R _{max}	Ω	0.60	0.80	0.95	1.2	1.3	1.5	1.8	7.0
f _{res, min}	MHz	3000	2500	2500	2500	2000	2000	1800	1300
Ord. code	B82496	C3330J	C3390J	C3470J	C3560J	C3680J	C3820J	C3101J	C3221J

SIMID® is a registered trademark · Tolerance: A \pm 0.3nH, J \pm 5%. Additional values upon request

© EPCOS AG 2008