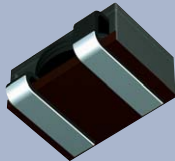




Sample Kit 2008



High-Power Inductors

HPI13 Series B82559A*A013

www.epcos.com

B82559X001

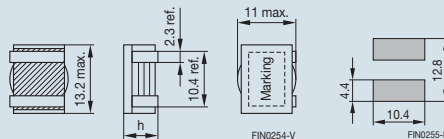
High-Power Inductors HPI13

SMD

L (inductance) ±10%	μH	0.5	0.95	1.1	1.4
$I_{sat, typ}$	A	30	25	20	22
$DCR_{max} \pm 15\%$	mΩ	0.78	1.12	1.72	1.5
Height h_{max}	mm	4.95	5.95	4.95	5.95
Ordering code	B82559	A0501A013	A0951A013	A0112A013	A0142A013
L (inductance) ±10%	μH	2.15	2.4	3.0	3.9
$I_{sat, typ}$	A	15	16.5	13	12
$DCR_{max} \pm 15\%$	mΩ	3.2	2.76	4.0	4.8
Height h_{max}	mm	4.95	5.95	4.95	5.95
Ordering code	B82559	A0222A013	A0242A013	A0302A013	A0392A013

- All values measured at 25 °C ambient temperature
- $I_{sat, typ}$ is current that will result in 20% reduction of nominal inductance
- Temperature response needs to be verified in specific applications; test results on request
- Operating temperature: -40 to +130 °C
- Flat wire winding: extremely low-resistance coil
- Self-leaded construction features under body termination for smallest possible footprint
- Special values and sizes on request
- Blister tape packaging:

Height of component	Reel
$h = 4.65 \text{ mm}$	750 pcs.
$h = 5.65 \text{ mm}$	550 pcs.



Mechanical dimensions and suggested pad layout (reference only)

Further product information: www.epcos.com

The *Important Notes* and the product-specific *Warnings and Cautions* must be observed (www.epcos.com/importantnotes).



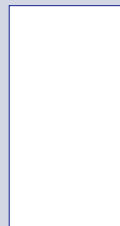
0.5 μH



0.95 μH



1.1 μH



1.4 μH



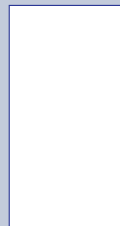
2.15 μH



2.4 μH



3.0 μH



3.9 μH

