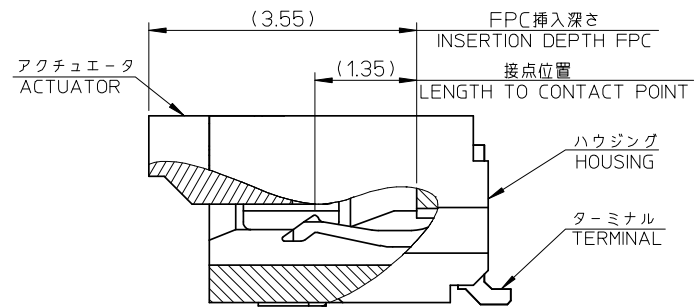
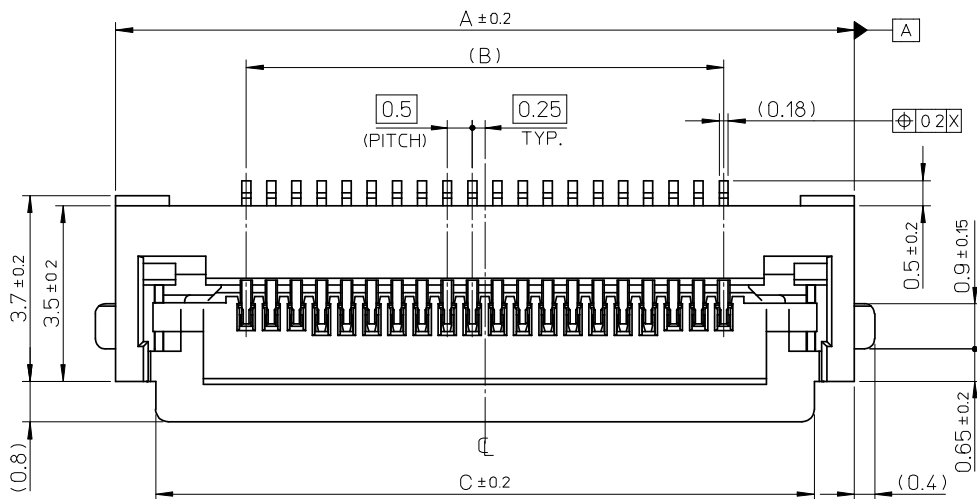
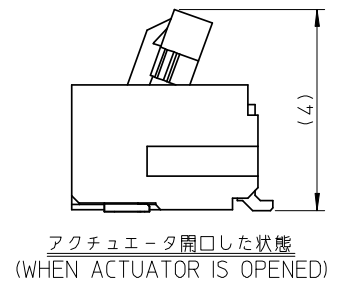
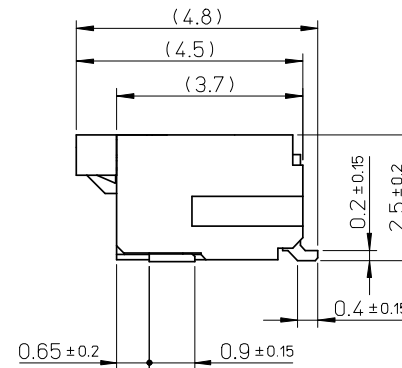
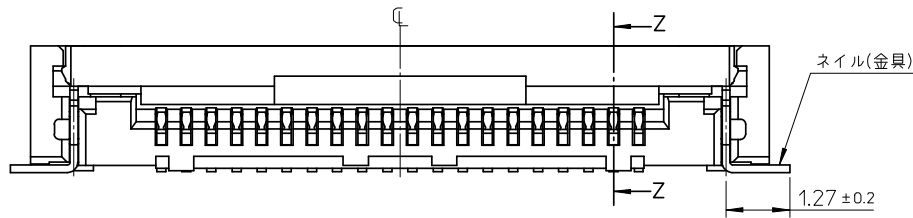


10 9 8 7 6 5 4 3 2 1

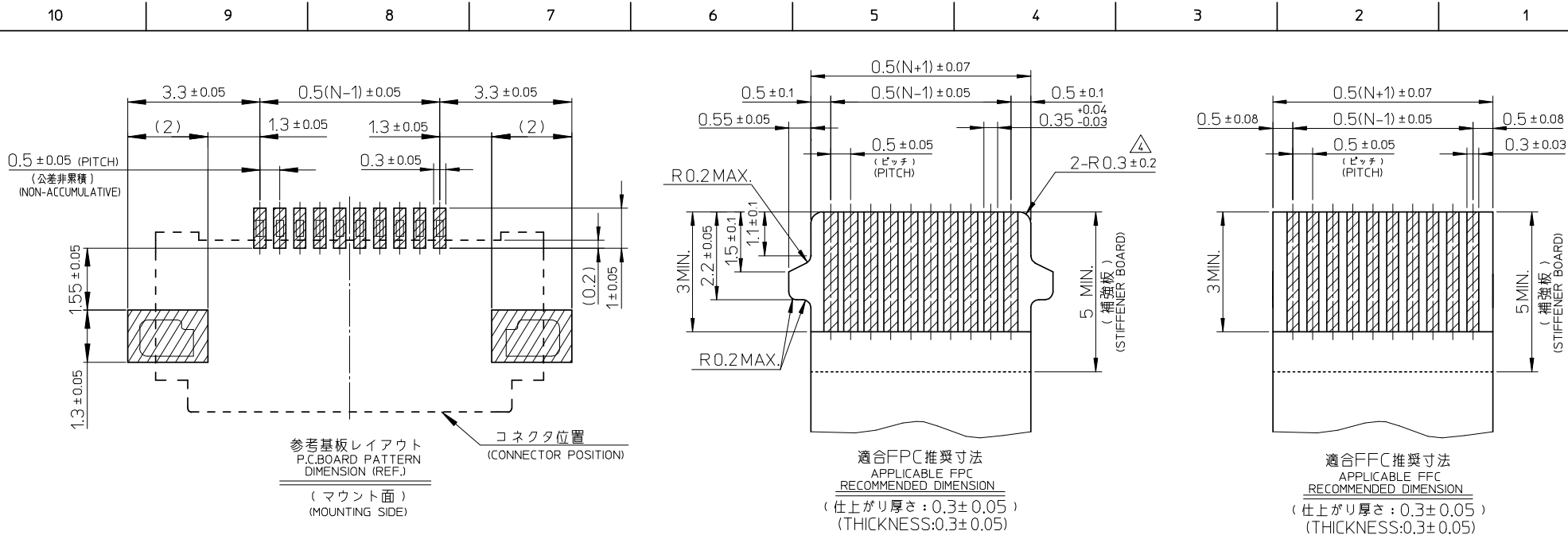


SECTION Z-Z



43.1	39.5	44.7	501559-8093	501559-8010	80
C	B	A	EMBOSSED TAPE	MATERIAL NO.	CIRCUITS
			ORDER No. オーダー番号		

REVISED EC NO: J2008-4264 DRWN: MWABEI 2008/06/13 CHKD: MHAYASHI 2008/06/13 APPR: NUKITA 2008/06/13	GENERAL TOLERANCES (UNLESS SPECIFIED)		DIMENSION STYLE MM ONLY		SCALE 10:1	DESIGN UNITS METRIC	THIRD ANGLE PROJECTION
	10 UNDER	± ---	DRAWN BY S. WATANABE	DATE 2005/06/27	TITLE 0.5FPC CONN. ZIF E/O HSG ASS'Y(H=2.5) -LEAD FREE-		
	10 OVER 30 UNDER	± ---	CHECKED BY H. HIRATA	DATE 2005/06/27	MOLEX INCORPORATED		
	30 OVER	± ---	APPROVED BY M. SASAO	DATE 2005/06/27	MATERIAL NO. SEE TABLE	DOCUMENT NO. SD-501559-001	SHEET NO. 1 OF 2
	ANGULAR ±1 °	DRAFT WHERE APPLICABLE MUST REMAIN WITHIN DIMENSIONS		THIS DRAWING CONTAINS INFORMATION THAT IS PROPRIETARY TO MOLEX INCORPORATED AND SHOULD NOT BE USED WITHOUT WRITTEN PERMISSION			



**注記 NOTES**

**1. 使用材料 MATERIAL**

- ハウジング : 液晶ポリマー ガラス充填, UL94-V0(ベージュ)
- HOUSING : LIQUID CRYSTAL POLYMER GLASS FILLED, UL94V-0(BEIGE)
- アクチュエータ : PPS ガラス充填, UL94-V0(茶)
- ACTUATOR : PPS GLASS FILLED, UL94V-0(BROWN)
- ターミナル : リン青銅(t=0.18)
- TERMINAL : PHOSPHOR BRONZE
- 金具 : リン青銅(t=0.15)
- FITTING NAIL : PHOSPHOR BRONZE

**2. めっき仕様 PLATING**

- ターミナル TERMINAL : ニッケル下地金めっき GOLD(Au) OVER NICKEL(Ni) PLATING.
- 金具 FITTING NAIL : ニッケル下地錫めっき TIN(Sn) OVER NICKEL(Ni) PLATING.

3. エンボステープ梱包時は、アクチュエータが閉じた状態とする。  
IN THE PACKAGE, ACTUATOR OF PART 501559-\*\*10 SHOULD BE CLOSED.

△ R0.3は、FPC導体部にかからないこと。  
R0.3 MUST NOT BE OVERLAPPED TO PATTERN OF FPC.

5. N: 極数 N: CIRCUIT.

**FPC/FFC について:**

打ち抜き方向は導体側から補強板側を推奨します。  
導体部については軟銅箔35μmまたは50μmを推奨します。

**ABOUT FPC/FFC**

RECOMMENDED PUNCHER DIRECTION : FROM CONDUCTOR SIDE TO STIFFENER FILM SIDE.  
RECOMMENDED CONDUCTOR SPEC : THICKNESS OF SOFT COPPER FOIL : 35 MICROMETER OR 50 MICROMETER.

**FPC について:**

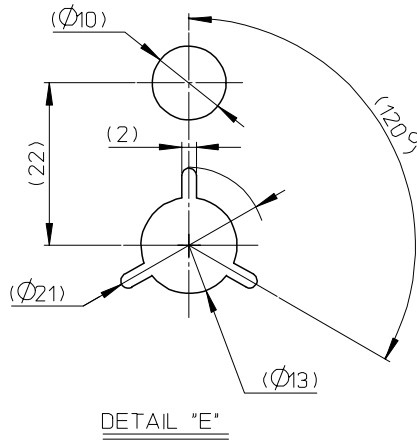
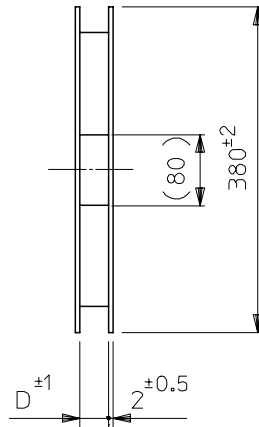
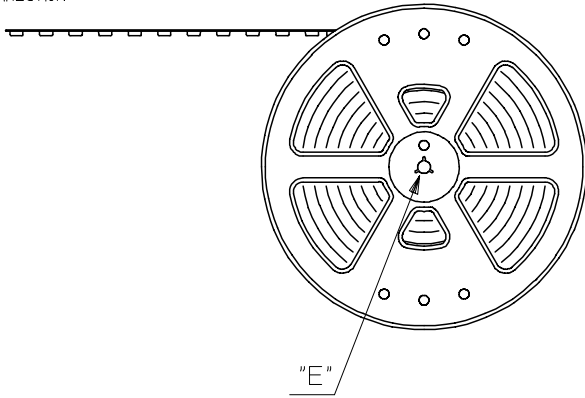
補強フィルム材質はポリイミドを推奨します。ベースフィルムは25μmを推奨します。  
接着剤は熱硬化接着剤を推奨します。  
尚、接着剤の接点部への付着は導通不良の原因になりますので、染み出しが無い様、お願い致します。

**ABOUT FPC**

RECOMMENDED MATERIAL/THICKNESS.  
STIFFENER FILM : POLYIMIDE  
BASE FILM THICKNESS : 25μm  
BONDING AGENT : THERMOSETTING BONDING AGENT  
PLEASE PUT APPROPRIATE AMOUNT OF ADHESIVE ON THE CONTACT AREA BECAUSE THE EXTRA ADHESIVE MAY CAUSE THE DEFECT IN ELECTRICAL CONTINUITY.

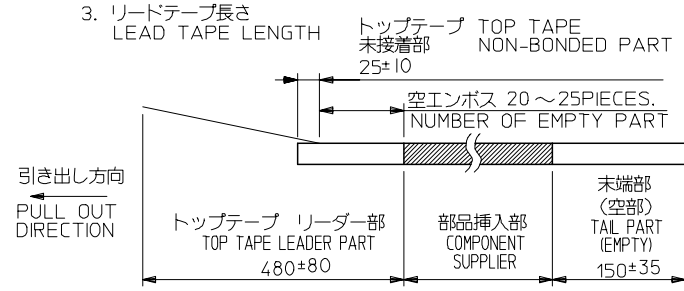
REVISED	EC NO. J2008-4264	2008/06/13	GENERAL TOLERANCES (UNLESS SPECIFIED)	DIMENSION STYLE	SCALE	DESIGN UNITS	THIRD ANGLE PROJECTION
	DRWN:WATABE	2008/06/13	10 UNDER ± ---	MM ONLY	---	METRIC	
	CHKD:HIYASHI	2008/06/13	10 OVER 30 UNDER ± ---	DRAWN BY DATE	TITLE	0.5FPC CONN. ZIF E/O HSG ASS'Y(H=2.5) -LEAD FREE-	
	APPR:NUKITA	2008/06/13	30 OVER ± ---	CHECKED BY DATE	0.5FPC CONN. ZIF E/O HSG ASS'Y(H=2.5) -LEAD FREE-		
REV			ANGULAR ±1 °	APPROVED BY DATE			
			DRAFT WHERE APPLICABLE MUST REMAIN WITHIN DIMENSIONS	MATERIAL NO.	DOCUMENT NO.		
				SEE SHEET 1			
				SIZE A3	THIS DRAWING CONTAINS INFORMATION THAT IS PROPRIETARY TO MOLEX INCORPORATED AND SHOULD NOT BE USED WITHOUT WRITTEN PERMISSION		

引き出し方向  
PULL OUT DIRECTION

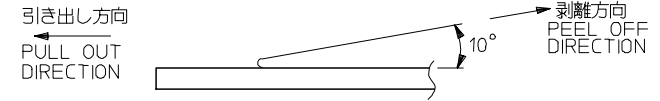


NOTES

- 製品詳細寸法については図面 SD-501559-001 を参照下さい。  
RE DETAILED DIMENSION, SEE SD-501559-001.
- 梱包数量：2000 個/リール  
NUMBER OF CONNECTORS：2000PCS/REEL



- トップテープの剥離強度  $0.59 \pm 0.34N$  (  $60 \pm 35gf$  ) (剥離方向は下図参照)  
<剥離速度：300mm/minutes (参考)>  
尚、本規格値は出荷時に適用。(但し、輸送時に剥離が発生しないこと。)  
PEELING OFF FORCE OF TOP TAPE :  $0.6 \pm 0.35N$  (  $60 \pm 35gf$  )  
(PEELING DIRECTION AS SHOWN IN FOLLOWING FIGURE)  
PEELING OFF SPEED : 300mm/minutes. (REFERENCE)  
THIS REQUIREMENT SHOULD BE APPLIED AT SHIPMENT.  
PEEL OFF SHOULD NOT BE ALLOWED , DURING TRANSPORTATION.



- 材料(MATERIAL)  
キャリアテープ(CARRIER TAPE) :ポリプロピレン(POLYPROPYLENE)  
トップテープ (TOPTAPE) : PET, PE  
リール(REEL): ポリスチレン (PS) <リサイクル材を含む>  
POLYSTYRENE (PS) <RECYCLE MATERIAL CONTAINED>

RELEASED EC NO: J2006-0896 DRWN:Y.TAKAYASU 2005/09/14 CHKDK:TAKAHASHI 2005/09/14 APPR:K.TAKAHASHI 2005/09/14 REV 0	GENERAL TOLERANCES (UNLESS SPECIFIED)		DIMENSION STYLE MM ONLY		SCALE ---	501559-xx93 MODEL NO.	DESIGN UNIT'S METRIC	THIRD ANGLE PROJECTION
	10 UNDER	±0.2	DRAWN BY S.WATANABE	DATE 2004/12/24	TITLE 0.5 FPC CONN E/O EMBSTP PKG HGT=2.5 -LEAD FREE-			
	10 OVER 30 UNDER	±0.25	CHECKED BY H.HIRATA	DATE 2004/12/24	MOLEX INCORPORATED			
	30 OVER	±0.3	APPROVED BY M.SASAO	DATE 2004/12/24	DOCUMENT NO. SD-501559-002			
	ANGULAR	±3 °	MATERIAL NO. SEE CHART		SHEET NO. 1 OF 2			
DRAFT WHERE APPLICABLE MUST REMAIN WITHIN DIMENSIONS		SIZE A3		THIS DRAWING CONTAINS INFORMATION THAT IS PROPRIETARY TO MOLEX INCORPORATED AND SHOULD NOT BE USED WITHOUT WRITTEN PERMISSION				

10 9 8 7 6 5 4 3 2 1

F

E

D

C

B

A

F

E

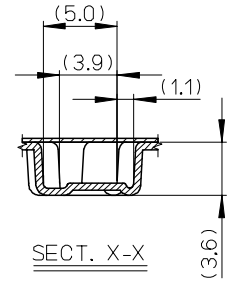
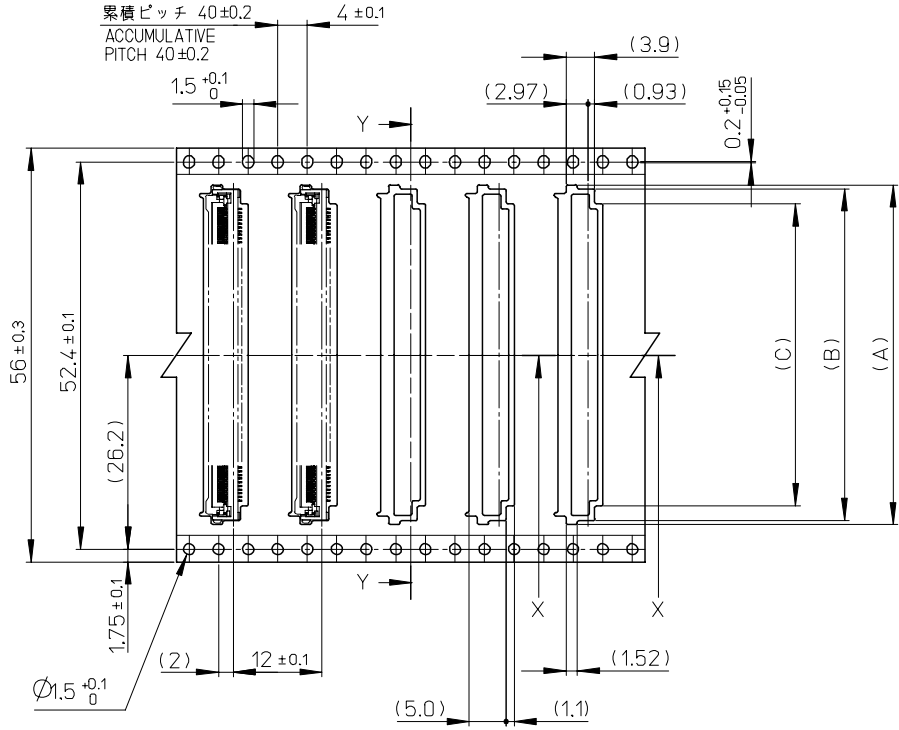
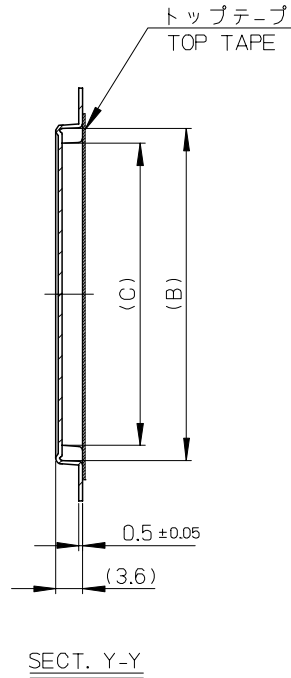
D

C

B

A

引き出し方向  
PULL OUT  
DIRECTION



MODEL NO.	501559-***93	56	57.5	40.9	44.9	46	501559-8093	80
CARRIER TAPE WIDTH		D	C	B	A		製品番号 MATERIAL NO.	極数 CIRCUIT
GENERAL TOLERANCES (UNLESS SPECIFIED)		DIMENSION STYLE MM ONLY		SCALE ---	DESIGN UNITS METRIC		THIRD ANGLE PROJECTION	
10 UNDER	± ---	DRAWN BY S. WATANABE		DATE 2004/12/16		TITLE 0.5 FPC CONN E/O EMBSTP PKG HGT=2.5 -LEAD FREE-		
10 OVER 30 UNDER	± ---	CHECKED BY H. HIRATA		DATE 2004/12/16		MOLEX INCORPORATED		
30 OVER	± ---	APPROVED BY M. SASAO		DATE 2004/12/16				
ANGULAR	± 1 °	MATERIAL NO.		DOCUMENT NO.		SHEET NO.		
DRAFT WHERE APPLICABLE MUST REMAIN WITHIN DIMENSIONS		SEE CHART		SD-501559-002		2 OF 2		
SIZE A3		THIS DRAWING CONTAINS INFORMATION THAT IS PROPRIETARY TO MOLEX INCORPORATED AND SHOULD NOT BE USED WITHOUT WRITTEN PERMISSION						