

## Rigid and Intermediate Metal Conduit Fittings

### Locknuts



140 Series  
141AL Series



106 Series

#### Application

- To connect externally threaded conduit or connector to a threadless opening in a box or enclosure
- To effectively bond conduit or connector to box or enclosure

#### Features

- Hardened steel/malleable iron/copper-free aluminum construction
- Tightens without deformation
- Locknuts specially designed to:
  - (i) Provide extended reach for clamping on thin boxes and enclosures
  - (ii) Cut through protective coating on box and enclosure, thereby ensuring ground continuity
  - (iii) Permit tightening from outside
  - (iv) Prevent loosening under vibration
- 106 Series provided with a hardened cone point screw

#### Standard Material

##### 140 Series & 106 Series

3/8" thru 2" steel (hardened) 2 1/2" thru 6"  
Malleable Iron  
All screws steel

##### 141AL Series

All copper-free aluminum

#### Standard Finish

All steel and malleable iron locknuts, including electro zinc-plated bonding screws and chromate coated all-aluminum locknut, degreased

#### Range

3/8" through 6" conduit (All threads straight pipe [NPS]) (140 Series)  
1/2" through 4" conduit (106 Series & 141AL Series)

#### Listed/Certified by

UL (UL File No. E-23018)  
CSA [catalog numbers 108, 109, 110 and 111. All 140 Series except catalog number 140.] (LR-2884, LR-4484)

#### Conforms to

UL 514B  
CSA C22.2 No. 18  
NEMA FB1  
NFPA 70  
Federal Specification replaced by A-A-50553  
Federal Standard H-28 (Threads)

#### Case Hardened Locknuts

Case hardened locknuts make fittings faster and easier to install. Case hardened locknuts do not slip or turn, thereby protecting the biting edge. Case hardened locknuts bite through paint into the enclosure, providing excellent continuity of ground (typical T&B/Thomas & Betts fitting with case hardened locknuts successfully passed minimum fault current of 10,000 amps RMS). Case hardened locknuts, when assembled in the intended manner, will not vibrate loose, thereby ensuring excellent ground continuity.

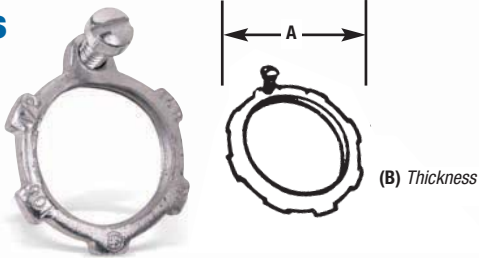
## Rigid and Intermediate Metal Conduit Fittings



T&B Fittings

Available in your choice of steel/malleable iron or aluminum.

### Locknuts



- Steel from 1/4" to 2" and malleable iron from 2 1/2" to 6"
- Aluminum 624 in all sizes



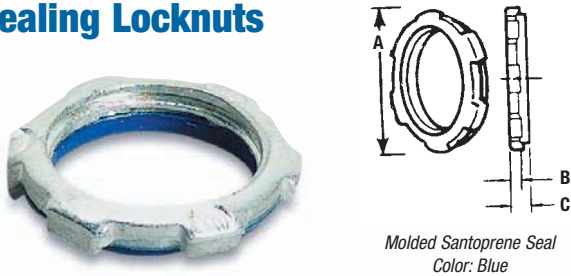
CAT. NO.	SIZE (IN.)	DIMENSIONS (IN.)	
		A	B
106†	1/4	1 1/8	.125
107†	3/8	1 1/8	.140
108	1	1 15/16	.170
109	1 1/4	2 1/2	.170
110	1 1/2	2 1/2	.170
111	2	3	.187
112†	2 1/2	3 13/32	.375
113†	3	4 13/16	.375
114†	3 1/2	4 29/32	.438
115†	4	5 1/2	.438

† Not CSA certified.  
Available with DURA-PLATE® Finish.

UL File No. E-3060  
CSA File No. 638

Provides positive seal against water and oil.

### Sealing Locknuts



- For use with rigid and intermediate metal conduits or fittings
- Provides watertight or raintight seal at all enclosures



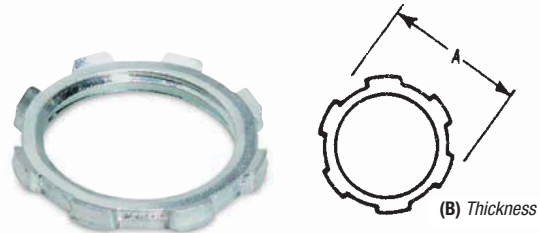
CAT. NO.	SIZE (IN.)	DIMENSIONS (IN.)		
		A	B	C
141SL	1/2	1.140	1/8	1/4
142SL	3/4	1.420	3/16	3/16
143SL	1	1.770	1/4	1/8
144SL	1 1/4	2.281	3/8	3/16
145SL	1 1/2	2.598	1/2	3/16
146SL	2	3.175	5/8	3/16

UL File No. E-23018  
CSA File No. 2884

Ensures positive bonding of conduit to box and prevents loosening due to vibration!

### Bonding Locknuts

- Steel or malleable iron (steel through 2")
- Can be used anywhere an ordinary locknut is installed
- Also can be used for Service Entrance applications in conformance with code
- T&B rigid conduit and EMT (thinwall) fittings comply with Federal Specification A-A-50553



CAT. NO.	STL. OR M.I.	ALUM.	SIZE (IN.)	DIMENSIONS (IN.)	
				A	B
139*	—	—	1/4	3/4	9/64
140*	—	—	3/8	15/16	9/64
141**	141AL	—	1/2	1 1/4	5/32
142**	142AL	—	3/4	1 3/8	3/16
143	143AL	—	1	1 11/16	13/64
144	144AL	—	1 1/4	2 1/2	1 1/4
145	145AL	—	1 1/2	2 1/2	1 1/4
146	146AL	—	2	3	7/32
147	147AL	—	2 1/2	3 3/16	1 1/32
148	148AL	—	3	4 1/16	1 1/32
149	149AL	—	3 1/2	4 13/16	1 5/32
150	150AL	—	4	5 1/16	1 5/32
151	151AL	—	4 1/2	5 15/16	1 1/32
152	152AL	—	5	6 1/2	1 1/32
153	153AL	—	6	7 3/4	1 9/32

\*Hex shape

\*\*Case hardened locknuts

Aluminum locknuts comply with federal standard of copper-free aluminum; less than .5% copper.

Available with DURA-PLATE® Finish.

UL File E-23018

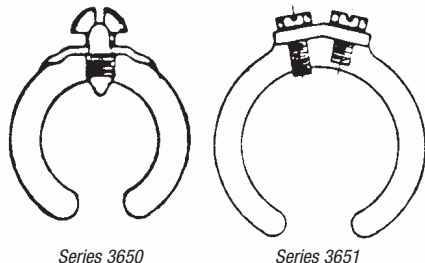
CSA File No. 2884

## Rigid and Intermediate Metal Conduit Fittings

Perfect for grounding old work or new!

### Bonding & Grounding Wedges

T&B Fittings



Series 3650

Series 3651

- Provides grounding without a jumper except in concentric knockouts
- When jumper is required, it fits under set screw in grounding wedge
- Update existing installations to meet code requirements for bonding (NEC Sect. 250-72e) without disconnecting wiring
- For use on new wiring, just loosen bushing, position wedge and tighten bushing and bonding screw

#### Application

- To effectively bond terminating fitting or conduit to a box or enclosure

#### Features

- Sizes 3/8" thru 6" equipped with an additional bonding screw to install bonding jumper where required
- Can be added to an existing installation without disconnecting conductors



Sealing Ring — Santoprene  
Thermoplastic Rubber

These sealing rings provide a liquid-tight, dust-tight seal of fitting at enclosures.



#### Standard Material/Finish

1/2" size Steel/Electro Zinc Plated  
3/4" thru 6" size Bronze/Tin Plated

#### Range

1/2" thru 6" conduit

#### Listed/Certified by

UL File #E3060  
CSA File #638

#### Conforms to

UL 467  
CSA C22.2 No. 41  
NFPA-70  
Federal Specification A-A-50552



### Grounding Wedges

CAT. NO.	SIZE
3650	1/2"
3651	3/4"
3652	1"
3653	1 1/4"
3654	1 1/2"
3655	2"
3656	2 1/2"
3657	3"
3658	3 1/2"
3659	4"
3661	5"
3662	6"

UL File No. E-3060

### Sealing Rings with Stainless Steel Retainer



CAT. NO.	CONDUIT SIZE	DIMENSIONS (IN.)	
		A	B ± 1/64
5302	1/2"	1 1/4	3/4
5303	3/4"	1 1/2	1 1/16
5304	1"	1 3/4	1 1/4
5305	1 1/4"	2 3/4	1 1/2
5306	1 1/2"	2 8/16	1 3/4
5307	2"	2 5/8	2 1/4
5308	2 1/2"	3 1/8	2 4/16
5309	3"	4 1/4	3 1/4
5311	4"	5 1/2	4 1/4

NEMA 3R, 4, 6 & 13

UL File No. E-13938

CSA File No. 2884



## Rigid and Intermediate Metal Conduit Fittings

### Blackjack® — Grounding Bushing

#### Innovative design makes installation quicker, easier.

The Blackjack® Grounding Bushing never has to be threaded onto a conduit. It is simply placed in position on either a threaded or non-threaded rigid or IMC conduit, with the grounding lug in perfect position to accept the grounding wire — even in tight installations.

*It's as simple as one, two, three!*

Compare the installation with conventional bushings that must be threaded onto the conduit. In tight areas, you may have to remove

the grounding lug, keep up with the loose parts and then reattach the lug. Then you still have to twist and turn the bushing to get the lug in position to accept the grounding wire.

The Blackjack bushing does away with these needless delays for good, making it the ideal grounding bushing — and the only logical choice for small spaces, corners and multiple conduit runs. And, because the grounding lug is an integral part of the bushing, it's designed not to fall off or get lost.

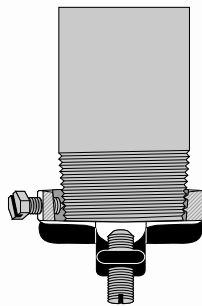
#### Innovative design improves performance.

##### The Blackjack® bushing provides superior ground continuity.

The design of the Blackjack bushing has an integral, cast-on grounding lug for better ground continuity. This means that the Blackjack bushing stands up to intense loads.

##### Secure grip forms lasting bond.

The Blackjack bushing's cone-point mounting screw bites securely into both threaded and non-threaded rigid conduits. And the Blackjack bushing's nylon locking patch is designed to prevent the screw from loosening due to vibration.



##### Reduce inventory.

Because the Blackjack Grounding Bushing is designed for threaded and non-threaded conduits, and the ground lugs are designed to handle an extended range, the number of parts in inventory is reduced by up to two-thirds without losing any application coverage.

Integral grounding lug enhances ground continuity. Added ground wire range taking reduces inventory. Accepts copper or aluminum ground wires.

Insulating nylon surface is 150° C rated and covers top of bushing, including lug corners.

Angle of lug screw improves accessibility when securing grounding wire.

Mounting screw with nylon locking patch has a cone point to lock bushing securely in place.



Insulator surface features a rounded design to reduce drag and prevent abrasion during wire pulling.

Cast "threads" opposite the mounting screw tighten the fit during installation.

### Blackjack® — Conduit Grounding Bushing

#### Lug Screw:

14-4: Slotted

14-2/0: Slotted

6-4/0: Internal Hex Drive

#### Standard Material/Finish

Body: Malleable Iron or Aluminum

Mounting Screw: (1/2"–2") Stainless Steel, (2 1/2"–6") Brass

Lug Screw: Stainless Steel

Finish: Zinc Plated or Mechanical Galvanized

#### Range

Conduit: 1/2" thru 6" threaded or threadless rigid/IMC

Wire Range: #14 AWG to 4/0 AWG CU/AL

#### Listed/Certified by

UL File #E3060

CSA File #LR2884

#### Conforms to

UL 514B & U.L. 467

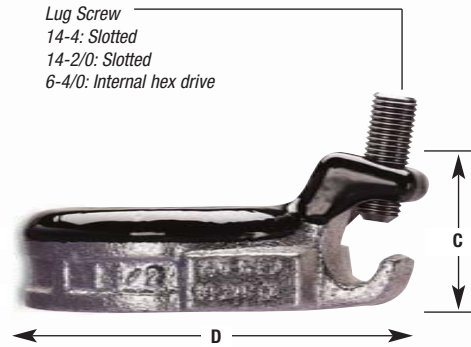
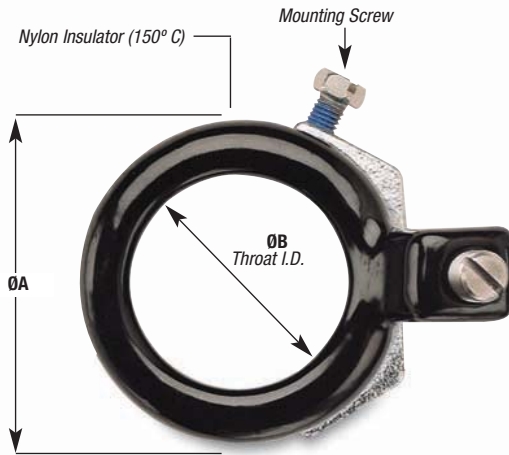
CSA C22.2 No. 18 & CSA C22.2 No. 41



## Rigid and Intermediate Metal Conduit Fittings

### Blackjack® Grounding Bushing Technical Information

T&B Fittings



For Threaded and Threadless Rigid and IMC Conduit

CAT. NO.		CONDUIT SIZE	ØA MAX.	ØB MIN. THROAT I.D.	C MAX.	D MAX.	E MAX.	WIRE RANGE
ZINC PLATED MALLEABLE IRON	ALUMINUM							
BG050-14-20	BGA050-14-20	½"	1.251	.569	1.181	2.134	.696	14-2/0
BG050-14-4	BGA050-14-4	½"	1.251	.569	1.027	1.940	.696	14-4
BG075-14-20	BGA075-14-20	¾"	1.533	.772	1.221	2.414	.696	14-2/0
BG075-14-4	BGA075-14-4	¾"	1.533	.772	1.030	2.168	.696	14-4
BG100-14-20	BGA100-14-20	1"	1.783	.993	1.181	2.581	.696	14-2/0
BG100-14-4	BGA100-14-4	1"	1.783	.993	1.027	2.368	.696	14-4
BG125-14-20	BGA125-14-20	1¼"	2.220	1.319	1.181	2.987	.759	14-2/0
BG150-14-20	BGA150-14-20	1½"	2.470	1.553	1.181	3.236	.696	14-2/0
BG200-14-20	BGA200-14-20	2"	2.830	2.010	1.181	3.766	.696	14-2/0
BG250-14-20	BGA250-14-20	2½"	3.418	2.412	1.181	4.341	.978	14-2/0
BG250-6-40	BGA250-6-40	2½"	3.418	2.412	1.524	4.526	.978	6-4/0
BG300-14-20	BGA300-14-20	3"	4.042	3.022	1.181	4.966	.978	14-2/0
BG300-6-40	BGA300-6-40	3"	4.042	3.022	1.524	5.139	.978	6-4/0
BG350-14-20	BGA350-14-20	3½"	4.542	3.491	1.181	5.467	.978	14-2/0
BG350-6-40	BGA350-6-40	3½"	4.542	3.491	1.524	5.639	.978	6-4/0
BG400-14-20	BGA400-14-20	4"	5.042	3.975	1.181	5.966	.978	14-2/0
BG400-6-40	BGA400-6-40	4"	5.042	3.975	1.524	6.139	.978	6-4/0
BG500-14-20	BGA500-14-20	5"	6.136	4.991	1.181	7.045	.978	14-2/0
BG500-6-40	BGA500-6-40	5"	6.136	4.991	1.524	7.207	.978	6-4/0
BG600-14-20	BGA600-14-20	6"	7.199	6.009	1.181	8.087	.978	14-2/0
BG600-6-40	BGA600-6-40	6"	7.199	6.009	1.524	8.409	.978	6-4/0

Suggested Specifications: Insulated grounding and bonding bushing (Series BG050-BG600)

Where code requires bonding and grounding of single or multiple metal conduits, or positive bonding and grounding of metal conduit to the box, enclosure or auxiliary gutter, the end of the conduit shall be equipped with an insulated metallic grounding and bonding bushing series BG050-14-20 as manufactured by Thomas & Betts.

Grounding and bonding bushings used shall be approved for the purpose and (i) Shall be of malleable iron/steel/aluminum construction adequately protected against corrosion.

(ii) Bushing insulator shall be listed or certified for 150° C/302° F application with a flammability rating of 94V-0. Insulator must be positively locked in place.

Please consult factory for mechanically galvanized.

## Rigid and Intermediate Metal Conduit Fittings



### Threaded Insulated Grounding Bushing

#### Application

- For quick installation of bonding jumper to multiple metal conduits (Rigid and IMC)
- Designed to bush conductors and prevent insulation damage

#### Features

- Ease of installation, lay in lug design
- Cast malleable iron body designed to lock insulator in place within body, reducing common assembly problem resulting in dislodging of insulator
- Insulator rated for 150° C/302° F application
- Look for the unique T&B blue color, ensuring the highest quality fitting

#### Standard Material/Finish

Body: Electro zinc plated

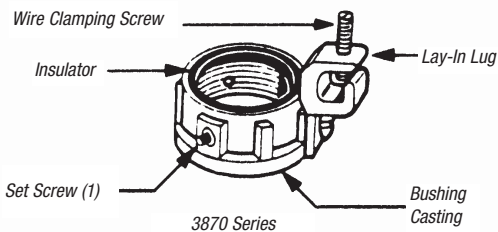
Lay-In Lug: Aluminum/tin plated

Insulator: Thermoplastic 150° C/302° F  
Application with 94V-0 flammability



T&B Fittings

CAT. NO.	CONDUIT SIZE	BUSHING DIA.	THROAT DIA.	LUG LENGTH	SWING RADIUS	BUSHING HEIGHT	WIRE RANGE AWG CU/AL
3870-TB	½"	1.125	.560	1.310	1.212	.657	14-4
3861	½"	1.125	.560	1.675	1.402	.657	8-2/0
3871-TB	¾"	1.420	.742	1.310	1.360	.660	14-4
3862	¾"	1.420	.742	1.675	1.550	.660	8-2/0
3872	1"	1.770	.944	1.310	1.535	.735	14-4
3882	1"	1.770	.944	1.675	1.725	.735	8-2/0
3873	1¼"	2.190	1.242	1.310	1.745	.735	14-4
3883	1¼"	2.190	1.242	1.675	1.935	.735	8-2/0
3874	1½"	2.468	1.449	1.310	1.884	.770	14-4
3884	1½"	2.468	1.449	1.675	2.074	.770	8-2/0
3875	2"	3.031	1.860	1.310	2.165	.770	14-4
3889	2"	3.031	1.860	1.675	2.355	.770	8-2/0
3876	2½"	3.516	2.222	1.310	2.408	.940	14-4
3886	2½"	3.516	2.222	1.675	2.598	.940	8-2/0
3993	2½"	3.516	2.222	2.230	2.928	.940	6-4/0
3877	3"	4.234	2.761	1.310	2.767	.975	14-4
3887	3"	4.234	2.761	1.675	2.957	.975	8-2/0
3994	3"	4.234	2.761	2.230	3.287	.975	6-4/0
3878	3½"	4.781	3.193	1.310	3.040	.975	14-4
3863	3½"	4.781	3.193	1.675	3.230	.975	8-2/0
3995	3½"	4.781	3.193	2.230	3.560	.975	6-4/0
3879	4"	5.328	3.623	1.310	3.314	.980	14-4
3864	4"	5.328	3.623	1.675	3.504	.980	8-2/0
3996	4"	5.328	3.623	2.230	3.834	.980	6-4/0
3880	5"	6.328	4.542	1.310	3.814	.985	14-4
3865	5"	6.328	4.542	1.675	4.000	.985	8-2/0
3998	5"	6.328	4.542	2.230	4.334	.985	6-4/0
3881	6"	7.406	5.458	1.310	4.353	1.200	14-4
3866	6"	7.406	5.458	1.675	4.543	1.200	8-2/0
3999	6"	7.406	5.458	2.230	4.875	1.200	6-4/0



Temperature rating 150° C

Meets Coast Guard Regulation CG293

Available with DURA-PLATE® Finish.

United States  
Tel: 901.252.8000  
800.816.7809  
Fax: 901.252.1354

Canada  
Tel: 450.347.5318  
Fax: 450.347.1976

Technical Services  
Tel: 888.862.3289

**Thomas & Betts**

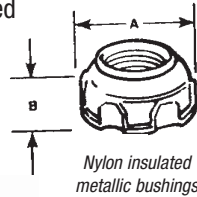
[www.tnb.com](http://www.tnb.com)



## Rigid and Intermediate Metal Conduit Fittings

### Meets and surpasses NEC® requirements! Insulated Throat Fittings

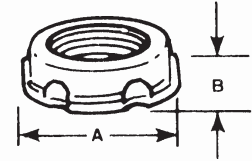
- Steel or malleable iron (steel through 1½")
- Exceeds NEC 373-6C requirements for protection of ungrounded connectors at entrance to raceways, pull boxes and junctions
- Recognizable by distinctive trademarked blue insulating liner in throat
- Reduces wire pulling effort by as much as 50%
- Temperature rating of 105° C
- Look for the unique T&B blue color, ensuring the highest quality fitting



Locknut-type base improves bonding and resists loosening under vibration.

### Metallic Bushings

- Aluminum, steel or malleable iron (steel through 1½")
- Smoothly rounded shoulder covers end of conduit
- Broad flange covers knockout hole
- High ribs for easy tightening with fingers or with wrench
- ½" to 1½" sizes, formed in steel, feature extra-smooth shoulders



CAT. NO.		SIZE	DIMENSIONS (IN.)	
STL. OR M.I.	ALUM.		A	B
1222	1222AL	½"	1½₂	²⁹⁄₆₄
1223	1223AL	¾"	1½₂	³¹⁄₆₄
1224	1224AL	1"	1½₂	¹⁷⁄₃₂
1225	1225AL	1¼"	1⁵⁄₁₆	²⁷⁄₃₂
1226	1226AL	1½"	2³⁄₁₆	²³⁄₃₂
1227	1227AL	2"	2¹⁷⁄₁₆	⁷⁄₈
1228	1228AL	2½"	3³⁄₁₆	⁷⁄₃₂
1229	1229AL	3"	3²⁷⁄₃₂	⁵⁄₁₆
1230	1230AL	3½"	4³⁄₁₆	1¹⁄₁₆
1231	1231AL	4"	4⁷⁄₁₆	1½₂
1232†	1232AL†	4½"	—	—
586	586AL	5"	5³⁄₃₂	1½₂
587	587AL	6"	7³⁄₁₆	1½₂

† Not CSA Certified

Catalog series 1222 thru 1232, 586 and 587 are available in aluminum. Add suffix AL to Cat. No. The aluminum series fittings are not CSA certified.

CAT. NO.			DIMENSIONS (IN.)	
STL. OR M.I.	ALUM.	SIZE	A	B
122	122AL	½"	1½₂	¹³⁄₃₂
123	123AL*	¾"	1¼	⁷⁄₁₆
124	124AL**	1"	1³⁄₁₆	½
125-TB	125AL	1¼"	1²⁹⁄₃₂	⁹⁄₁₆
126	126AL	1½"	2³⁄₃₂	¹³⁄₃₂
127	127AL	2"	2²¹⁄₃₂	⁵⁄₈
128	128AL	2½"	3³⁄₁₆	¾
129	129AL	3"	3²⁷⁄₃₂	¹³⁄₁₆
130-TB	130AL	3½"	4⁷⁄₁₆	¹⁵⁄₁₆
131-TB	131AL	4"	4¹⁷⁄₁₆	1
132-TB	—	4½"	5⁷⁄₁₆	1³⁄₆₄
133-TB	133AL	5"	6	1³⁄₁₆
134-TB	134AL	6"	7¼	1¼

\* Not UL Listed or CSA Certified

UL File No. E-23018

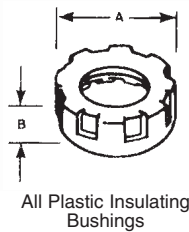
\*\* Not CSA Certified

CSA File No. 2884

Available with DURA-PLATE® Finish.

### Perfect threads for easy thread-on!

### Plastic Insulating Bushings



- Impact-resistant plastic insulation
- Ribbed for easy, secure gripping
- UL Listed 105° C



CAT. NO.	SIZE	DIMENSIONS (IN.)	
		A	B
222-TB	½"	1¹⁄₁₆	¾
223-TB	¾"	1½₂	¹³⁄₃₂
224	1"	1³⁄₁₆	⁹⁄₁₆
225-TB	1¼"	1²⁹⁄₃₂	⁹⁄₁₆
226	1½"	2²⁷⁄₃₂	⁹⁄₁₆
227	2"	2²⁷⁄₃₂	⁹⁄₁₆
228-TB	2½"	3³⁄₁₆	¾
229-TB	3"	4³⁄₁₆	¾
230-TB	3½"	4⁷⁄₁₆	⁷⁄₈
231	4"	5³⁄₁₆	⁷⁄₈
232	4½"	5¹¹⁄₁₆	1
233	5"	6³⁄₁₆	1
234	6"	7³⁄₁₆	1

UL Rated flame retardant 94V-1

## Rigid and Intermediate Metal Conduit Fittings



For threadless rigid conduit and intermediate metal conduit.

### Insulating Bushing

#### Application

- When assembled to the end of a threadless conduit, provides a well-rounded insulating surface over which conductors may be pulled or on which conductors may bear while in service

#### Features

- Designed to be popped onto, and bush, conduit end
- Fast, easy installation without screws
- High-impact thermoplastic construction

#### Standard Material

High-impact thermoplastic listed for 105° C (221° F) application  
Flammability Classification 94 V-1

#### Listed by

UL (UL File No. E-13938)  
CSA (LR-2884, LR-4484)

#### Standard Finish

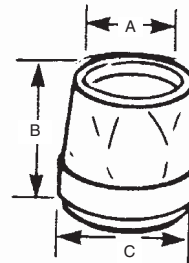
As molded

#### Conforms to

UL 514B  
NFPA 70

#### Range

½" through 4" conduit



TRIB-100



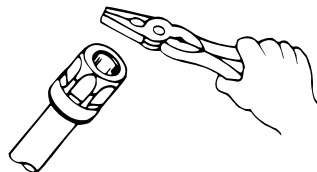
TRIB-75



TRIB-150



1. Cut conduit end squarely. Remove sharp edges and burrs on inside and outside diameters by reaming or filing.
2. Slip the pop-on bushing over the end of the conduit.
3. Using the flat surface of any standard utility tool such as an electrician's pliers (or a hammer with a block of wood for the larger sizes), strike the bushing on its top surface using a series of light blows until the end of the conduit rests against the bushing throat and conduit stop.



CAT. NO.	SIZE	DIMENSIONS (IN.)		
		A	B	C
TRIB-50	½"	19/32	19/32	11/16
TRIB-75	¾"	29/32	13/16	1¼
TRIB-100	1"	1	1½	11/8
TRIB-125	1¼"	15/16	1½	15/16
TRIB-150	1½"	111/32	13/8	21/16
TRIB-200	2"	13/8	111/16	21/8
TRIB-250	2½"	23/16	2	3¼
TRIB-300	3"	23/8	21/8	35/16
TRIB-350	3½"	3	23/8	41/8
TRIB-400	4"	31/2	23/4	5

I.M.C. sizes ½" thru 4"

UL Rated flame retardant 94V-1

UL File No. E-13938

CSA File No. 2884



# Rigid and Intermediate Metal Conduit Fittings

## Knockout Bushing

3210 Series



Provides smooth, rounded insulation surface for easy wire pulling!

- Quickly snaps into outlet box, switch box or other enclosure left vacant by wiring modifications or maintenance changes
- High-impact thermoplastic, one-piece construction
- Easily installed by hand
- UL Listed 105° C

### Application

- To bush knockout openings in metal boxes or enclosures

### Features

- One-piece construction designed to snap in place
- High-impact strength, self extinguishing, non-dripping (per UL 94) thermoplastic construction

### Standard Material

Thermoplastic rated for 105° C (221° F) application

### Standard Finish

As molded

### Range

.875" through 2.469" nominal diameter knockout opening (½" through 2" trade size knockouts)

Wall thickness of box or enclosure

.095" max. up to 1" trade size

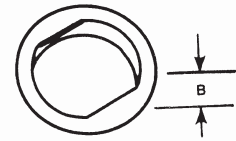
.140" max. 1¼" through 2" trade size

### Listed/Certified by

UL (UL File No. E-3803)  
CSA (LR-589,LR-4484)

### Conforms to

UL 514B  
CSA C22.2 No. 18  
NFPA 70-1999 (ANSI)



CAT. NO.	FOR USE IN KO SIZE*	DIMENSION (IN.)	
		A	B
3210	.875	.360	
3211	1.109	.360	
3212	1.375	.360	
3213	1.734	.400	
3214	1.984	.520	
3215	2.469	.520	

\* Per UL and NEMA standards. Refer to "Knockout Plugs" table on next page.

Oxygen index >28° UL 94V-1

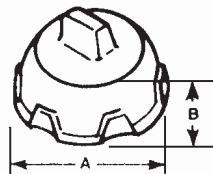
UL File No. E-3803 CSA File No. 589

Makes a workman-like seal against grit, plaster and mischief!

## Capped Bushings

### Capped Bushings

- Removable with pliers
- ½" through 1¼" sizes in steel
- 1½" and 2" sizes in malleable iron



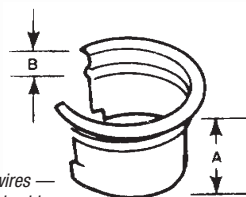
CAT. NO.	SIZE	DIMENSION (IN.)	
		A	B
1460	½"	1½"	1¾"
1461	¾"	1¼"	7/16"
1462	1"	1½"	½"
1463	1¼"	1¾"	9/16"
1464	1½"	2½"	1¾"
1465	2"	2¾"	¾"

UL File No. E-23018 CSA File No. 2884

Snaps into a regular bushing to make a UL Listed insulated bushing!

## INSULINER® Sleeves

- Converts ordinary bushing to code-approved insulated bushing without disturbing wiring
- For use with standard rigid conduit, EMT (thinwall conduit) or any standard bushed outlet
- Especially suited for use with flexible metallic conduit
- High-dielectric nylon material, rated 105° C



Slip over wires —  
insert into bushing —  
snaps into place

CAT. NO.	SIZE	DIMENSION (IN.)	
		A	B
422	½"	5/8"	.025
423	¾"	1¼"	.025
424	1"	7/8"	.025
425	1¼"	1"	.030
426	1½"	1"	.030
427	2"	1½"	.030
428	2½"	1¼"	.040
429	3"	1½"	.040
430	3½"	1¾"	.055
431	4"	2½"	.055
433	5"	2½"	.070
434	6"	2½"	.070

Oxygen index >28° UL File No. E-23018 CSA File No. 589

## Rigid and Intermediate Metal Conduit Fittings



Made from flame-retardant, non-dripping thermoplastic, UL rated 105° C!

### Knockout Plugs

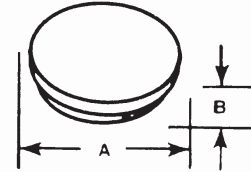
#### Application

- To plug unused knockout openings in a box or enclosure

#### Features

- One-piece construction designed to snap in place
- High impact strength self-extinguishing non-dripping (per UL-94) thermoplastic construction

1451 Series



105° C rated by UL. Made from flame retardant, non-dripping thermoplastic.



#### Standard Material

Thermoplastic rated for 105° C (221° F) application

#### Standard Finish

As molded

#### Range

.875" through 2.469" Nominal Diameter

Knockout opening (1/2" through 2" trade size knockouts)

Wall thickness of box or enclosure

.095" max. up to 1" trade size

.140" max. through 2" trade size.

#### Listed/Certified by

UL (UL File No. E13938)

CSA (LR589)

#### Conforms to

UL 514B

NFPA 70

CAT. NO.	SIZE	DIMENSIONS (IN.)	
		A	B
1451	1/2"	1.060	.400
1452	3/4"	1.300	.400
1453	1"	1.590	.400
1454	1 1/4"	1.860	.450
1455	1 1/2"	2.240	.570
1456	2"	2.740	.570

Wall thickness of electrical box .095 max.  
Meets Coast Guard Regulation CB293.  
UL File No. E-13938 CSA File No. 4484

Eliminates need for separate capped bushing or steel penny and bushing!

### Plug, Conduit, Connectors (Push-Penny® Plugs)

#### Application

- To plug open end of conduit or connector in order to prevent ingress of trash, dirt or moisture during construction and remodeling

#### Features

- Wide range of applications; can be used with rigid metal conduit, intermediate metal conduit, electrical metallic tubing, all connectors and all bushings
- Designed to stand up to normal handling and is functionally unaffected by moisture

- Economically seal out grout and plaster from any fitting or raceway conforming to CSA dimensional tolerances
- Just push into place
- Pressure holds plug fast against internal surface of fitting or raceway
- Made of flexible plastic

#### Standard Material

Polyethylene

#### Standard Finish

As molded

#### Listed/Certified by

CSA (LR2884, LR4484)

#### Conforms to

UL 514B

CSA C22.2 No. 18

NFPA 70

NEMA FB1



CAT. NO.	SIZE
1470	1/2"
1471	3/4"
1472	1"
1473	1 1/4"
1474	1 1/2"
1475	2"
1476*	2 1/2"
1477*	3"
1478*	3 1/2"
1479*	4"

\*Not CSA Certified.  
CSA File No. 2884  
UL not applicable.

Made to fit any bushing!

### Pennies — Steel

- Used under a bushing to seal end of conduit during construction
- Completely salvageable



CAT. NO.	SIZE	CAT. NO.	SIZE
815-TB	1/2"	821	2 1/2"
816	3/4"	822	3"
817	1"	824	3 1/2"
818	1 1/4"	823	4"
819	1 1/2"		
820	2"		

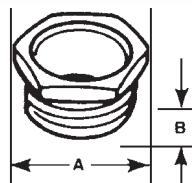
UL not applicable.  
CSA File No. 2884

## Rigid and Intermediate Metal Conduit Fittings

Bush holes in metal boxes or enclosures!

### CHASE® Nipples

T&B Fittings



- 3/8" and 1/2" sizes in steel
- 3/4" to 6" sizes in malleable iron
- 1/2" to 6" sizes in copper-free aluminum

STL. OR M.I.	CAT. NO.	ALUM.	SIZE	DIMENSIONS (IN.)	
				A	B
841TB	—		3/8"	15/16	7/16
842TB	842ALTB†		1/2"	1 1/16	43/64
843TB	843ALTB		3/4"	1 1/8	1 1/32
844	844AL†		1"	1 1/16	3/4
845	845AL†		1 1/4"	2 1/2	25/32
846	846AL		1 1/2"	2 3/8	1 1/8
847	847AL		2"	2 5/16	3 1/32
848	848AL		2 1/2"	3 3/8	1 1/8
849	849AL		3"	4 3/8	1 1/4
850	850AL		3 1/2"	5 1/8	1 1/8
851	851AL		4"	5 7/8	1 1/8
853	853AL		5"	6 1/2	1 1/8
854	854AL		6"	7 3/8	1 3/8

† Not UL Listed

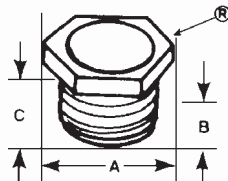
Available with DURA-PLATE® Finish.

UL File No. E-23018

CSA File No. 2884

Nylon insulator offers extra protection!

### CHASE® Nipples — Nylon-Insulated



- 3/8" and 1/2" sizes in steel
- 3/4" to 6" sizes in malleable iron
- 1/2" to 6" sizes in copper-free aluminum
- Look for the unique T&B blue color ensuring the highest quality fitting available

CAT. NO.	SIZE	DIMENSIONS (IN.)		
		A	B	C
1942	3/8"	1 1/4	7/16	1 19/32
1943	1/2"	1 1/8	17/32	2 1/32
1944	3/4"	1 1/16	2 1/32	2 7/8
1945	1"	2 1/2	2 5/32	3 1/32
1946	1 1/2"	2 3/8	3 1/16	4 1/32
1947	2"	2 5/16	3 1/32	4 1/32
1948	2 1/2"	3 3/8	4 1/8	5 1/8
1949	3"	4 3/8	5 1/8	6 1/32
1950	3 1/2"	5 1/8	6 1/8	7 1/32
1951	4"	6 1/8	7 1/8	8 1/32
1953	5"	7 1/8	8 1/8	9 1/32
1954	6"	8 3/8	9 1/8	10 1/32

UL File No. E-23018

CSA File No. 2884

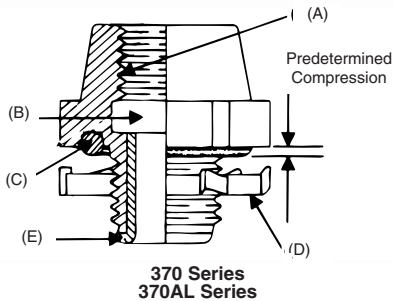


## Rigid and Intermediate Metal Conduit Fittings



For Threaded Rigid Metal Conduit/IMC/PVC Coated Rigid Metal Conduit.

### Threaded Hubs (Bullet® Hubs)



#### Application

- To connect threaded metal conduit (ferrous rigid/non-ferrous rigid/PVC coated/or intermediate metal) to a threadless opening in a box or enclosure in outdoors or indoor location exposed to continuous or intermittent moisture
- To positively bond conduit to box or enclosure

#### Features

- Rugged steel/malleable iron/copper-free aluminum construction
- Tapered internal threads for water-tight/dust-tight union (A)
- Threads relieved to prevent bottoming of conduit, ensuring sound assembly (B)
- Recessed sealing ring at box end; sealing ring captivated (C)
- Hardened steel/malleable iron/copper-free aluminum locknuts designed to provide high-quality ground continuity; extended reach of locknut permits clamping on thin boxes and enclosures (D)
- Insulated throat, insulates conductors, prevents abrasion and thinning of conductor insulation, reduces wire pull effort (E)
- Suitable for hazardous location use per following:
  - Class I Division 2, Class II Division 1 & 2, Class III Division 1 & 2 per NEC 501-4 (b); 502-4 (a) and 503-3 (a)
  - Class II Groups E, F, G, & Class III locations per CEC 18-202; 18-252; 18-302; 18-352
- PVC coated 485 Series
  - Protects connector from extremely corrosive surroundings without affecting integrity of electrical grounding path (F)
  - Provided with overlapping sleeve for additional seal (G)

National Electrical Code® states that, "Where practical, dissimilar metals in contact anywhere in the system shall be avoided to eliminate the possibility of galvanic action." The only exceptions, aluminum fittings and enclosures, are permitted to be used with steel conduit.

Joint Industrial Council (JIC) Electrical Standards also forbid dissimilar metals in contact for the same reason and require that the fittings for metal conduit be of malleable iron or ductile iron and have impact strength comparable to that of the conduit.

#### Copper-Free Aluminum

Copper free aluminum castings for fittings have a maximum of 0.4% copper. The most detrimental effect of higher percentage of copper on aluminum base alloy is its decrease in corrosion resistance.

#### Standard Material

	370-485 Series	370AL
Body:	½" thru 1" Steel 1¼" thru 6" Malleable Iron	All Copper-Free Aluminum
Locknut:	½" thru 2" Steel (hardened) 2½" thru 6" Malleable Iron	½" thru 2" Steel (hardened) 2½" thru 4" Copper-Free Aluminum

Screws: Steel (hardened)  
O-Ring: Buna N  
Insulator: Nylon  
Coating: PVC

#### Standard Finish

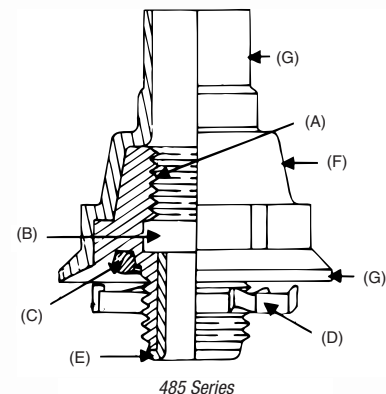
	370 Series	370AL Series	485 Series
Hub:	Electro Zinc Plated Chromate Coated	As Cast	PVC — Outside Electro Zinc Plated Chromate Coated Inside
Locknuts:	All Ferrous Locknuts Electro Zinc Plated and Chromate Coated		
Screws:	All Electro Zinc Plated and Chromate Coated		
Range:	370 Series	½" thru 6" Conduit	
	370AL & 485 Series	½" thru 4" Conduit	
		All hub threads — straight pipe	
		All female threads — taper pipe	(NPT)

#### Listed/Certified by

UL (UL File No: E-23018)  
CSA (LR-637, LR-23086)

#### Conforms to

UL 514B  
CSA C22.2 No. 18  
NFPA 70  
NEMA FB-1  
JIC EGP1; JIC EMP 1  
Federal Specification A-A-50553  
Federal Standard H-28 (Threads)

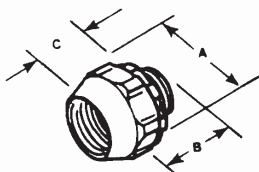


## Rigid and Intermediate Metal Conduit Fittings

### Nylon insulated! Steel/Malleable Iron and Aluminum Hub Connectors\*†



T&B Fittings



- Aluminum, steel or malleable iron (steel through 1")
- With neoprene O-ring, provides watertight threaded hub on enclosures
- UL Listed 105° C
- Look for the unique T&B blue color ensuring the highest quality fitting

STL. OR M.I.	ALUM.**	SIZE	DIMENSIONS (IN.)			WALL THICK (MAX.)
			A	B	C	
370	370AL	½"	1⅜	1¼	¾	⅝
371	371AL	¾"	1⅝	1¼	¾	⅝
372	372AL	1"	2⅝	1⅝	⅞	⅝
373	373AL	1⅝"	2⅞	1⅝	1	⅝
374	374AL	1½"	3⅝	1⅝	1	⅝
375	375AL	2"	3⅞	1⅝	1	⅝
376	376AL	2½"	4⅞	1⅝	1⅝	⅝
377	—	3"	5	2½	1½	½
378	—	3½"	5⅞	2½	1½	½
379	—	4"	6⅞	2½	1½	½
381	—	5"	8	3⅝	—	½
382	—	6"	9⅞	3⅝	—	½

\* Suitable for hazardous locations use in Class I, Div. 2; Class II, Div. 2; Class III, Div. 1 and 2 where general purpose equipment is specifically permitted per NEC Section 500-2(a).

\*\* Aluminum not available with insulated throat.

† UL Listed rain tight and CSA Certified watertight and dust tight

Available with DURA-PLATE® Finish.

UL File No. E-23018

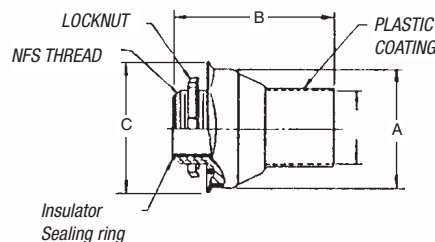
For STL.: CSA File No. 2284

For AL.: CSA File No. 0637

### PVC coating protects hub in corrosive environments!

#### PVC-Coated Hub for Rigid Conduit

- Steel in ½" to 1¼" sizes
- Malleable iron from 1½" to 4" sizes



Steel or malleable iron (steel thru 1¼").

CAT. NO.	CONDUIT SIZE	DIMENSIONS (IN.)		
		A	B	C
485	½"	1⅜	2⅞	1⅝
486	¾"	1⅞	2⅞	2⅞
487	1"	1⅞	2⅞	2⅞
488	1¼"	2⅞	3⅞	3⅞
489	1½"	2⅞	3⅞	3⅞
490	2"	3⅞	3⅞	4
491	2½"	3⅞	4	4½
492	3"	4⅞	4⅞	5⅞
493	3½"	5⅞	4⅞	5⅞
494	4"	5⅞	4⅞	6⅞

Suitable for hazardous locations use per Class I, Div. 2; Class II, Div. 1 & 2; Class III, Div. 1 & 2 NEC 501-4(b); 502-4(a) (2); 503-3(a) where general purpose equipment is specifically permitted per NEC Section 500-2(a).

## Rigid and Intermediate Metal Conduit Fittings



### Spacing Chart for Bullet® Hubs

CENTER TO CENTER SPACING CONDUIT SIZES (IN.)											MIN. SPACE FROM CENTER OF BULLET® HUB TO WALL OF BOX	KO DIAMETERS (MIN.)
½	¾	1	1¼	1½	2	2 ½	3	3½	4			
½	1⅞	1¾	1¾	2½	2½	2½	2½	3⅞	3½	3½	¾	⅞
¾	—	1¾	1¾	2¼	2¼	2¼	3	3½	3¾	4¾	⅞	1½
1	—	—	2	2½	2½	2½	3¾	3¾	3¾	4¼	1½	1½
1¼	—	—	—	2⅞	2⅞	3¼	3½	4	4¼	4½	1½	1¾
1½	—	—	—	—	3¼	3¼	3¾	4¾	4¾	4¾	1½	2
2	—	—	—	—	—	3¾	4	4½	4¾	5	1½	2½
2½	—	—	—	—	—	—	4¼	4¾	5	5½	2½	3
3	—	—	—	—	—	—	—	5½	5½	5½	2½	3½
3½	—	—	—	—	—	—	—	—	5½	6	2½	4½
4	—	—	—	—	—	—	—	—	—	6¼	3½	4½

T&B Fittings

### Bullet® Hub Connectors — Nylon Insulated



CAT. NO.	SIZE (IN.)	DESCRIPTION	PACKAGING		WT. PER 100
			CARTON	STD.	
401	½		25	100	20
402	¾		25	50	26
403	1	Steel or malleable iron (steel through	5	25	44
404-TB	1¼	1 inch). Used with a neoprene O-ring	5	25	75
405	1½	to provide a watertight* threaded hub	2	10	100
406-TB	2	on enclosures. Supplied with 106 series	1	5	138
407	2½	bonding locknut. Temperature rating: 105° C.	1	5	200
408	3		1	5	375
409	3½		—	1	425
410-TB	4		—	1	500

\*CSA LR2884. Certified watertight and dust tight.

### Spacing Chart for Bullet® Sealing Hubs

CENTER TO CENTER SPACING CONDUIT SIZES												MIN. SPACE FROM CENTER OF BULLET® HUB TO WALL OF BOX	KO DIAMETERS (MIN.)	
½	¾	1	1¼	1½	2	2½	3	3½	4	5	6			
½	1⅞	1¾	1¾	2½	2½	2½	2½	3⅞	3½	3½	4¾	5⅞	¾	⅞
¾	—	1¾	1¾	2¼	2¼	2¼	3	3½	3¾	4¾	4¾	5½	⅞	1½
1	—	—	2	2½	2½	2½	3¾	3¾	3¾	4¼	4¾	5⅞	1½	1½
1¼	—	—	—	2⅞	2⅞	3¼	3½	4	4¼	4½	5⅞	5½	1½	1¾
1½	—	—	—	—	3¼	3¼	3¾	4¾	4¾	4¾	7⅞	6⅞	1½	2
2	—	—	—	—	—	3¾	4	4½	4¾	5	6	6½	1½	2½
2½	—	—	—	—	—	—	4¼	4¾	5	5½	6	6½	2½	3
3	—	—	—	—	—	—	—	5½	5½	5½	6½	7½	2½	3½
3½	—	—	—	—	—	—	—	—	5½	6	6½	7½	2½	4½
4	—	—	—	—	—	—	—	—	—	6¼	7½	7½	3½	4½
5	—	—	—	—	—	—	—	—	—	—	8	8½	4	5½
6	—	—	—	—	—	—	—	—	—	—	—	8½	4½	6½

United States  
Tel: 901.252.8000  
800.816.7809  
Fax: 901.252.1354

Canada  
Tel: 450.347.5318  
Fax: 450.347.1976

Technical Services  
Tel: 888.862.3289

**Thomas & Betts**

[www.tnb.com](http://www.tnb.com)



# Rigid and Intermediate Metal Conduit Fittings

## T&B Hub



T&B Fittings



Never before has a single hub fit like this one. Designed for unequalled performance. The innovative engineering of the T&B® Hub will, quite simply, raise your performance expectations for threaded hubs. Look for the distinctive blue color to ensure the quality of a Thomas & Betts fitting.

- 1 Sealing Ring and Groove with innovative profile outperforms standard O-ring design. Sealing ring is captivated in place before installation and resists buckling or slipping during installation. The seal groove is designed for optimum compression of the sealing ring. The sealing ring is designed to provide a complete 360° seal, even when the conduit is not perpendicular with the enclosure. (See **Figure 1**)
- 2 Locknut Design with peripheral slots and a hexagonal/angled spline spaced every 30° enables easy application of torque with wrench or hammer and screwdriver. (See **Figures 2 & 3**)
- 3 Sharper and Deeper Teeth on locknut and body designed for a more penetrating bite for improved bonding to the enclosure.
- 4 Hexagonal/Splined Body Design for fast, easy installation with wrench or hammer and screwdriver.
- 5 Precision Machined Tapered Threads designed to create watertight union.
- 6 Insulated Throat molded from 105° C rated thermoplastic with a flammability rating of 94 V-0.

CAT. NO.	TRADE SIZE	A	B	C	D	E
		DIA.			MAX. PANEL THICKNESS	THROAT DIA.
H050-TB	½	1⅞	1⅞	¾	¾	1⅞
H075-TB	¾	1⅞	1⅞	29/32	¾	25/32
H100-TB	1	2	1⅞	1⅞	¾	1
H125-TB	1¼	2⅞	1⅞	1⅞	¾	1⅞
H150-TB	1½	2¾	1⅞	1⅞	¾	1⅞
H200-TB	2	3¼	1⅞	1⅞	¾	1⅞
H250-TB	2½	3¾	2⅞	1⅞	¾	2⅞
H300-TB	3	4⅞	2⅞	1⅞	¾	2⅞
H350-TB	3½	5	2⅞	1⅞	¾	3⅞
H400-TB	4	5½	2⅞	1⅞	¾	3⅞
H500-TB	5	6⅞	3⅞	1⅞	¾	4⅞
H600-TB	6	7⅞	3⅞	2	¾	6

Material – Hub and Locknut: zinc or copper-free aluminum  
 Insulating Throat: thermoplastic temp. rating – 105° C  
 Flammability Rating – 94V-0  
 Sealing Ring: Nitrile (BUNA "N")

For Aluminum Hubs add suffix A (i.e., H050A). For Chrome-Plated Hubs add suffix CP (i.e., H050CP). For 316 Stainless Steel Hubs add suffix GRSST (i.e., H050GRSST). (½" through 2" only) Meets NEMA sealing requirements for NEMA 3R, 4 & 13 enclosures.

UL Listed and CSA Certified. CSA Certified for hazardous locations Class II Groups E.F.G. Class III.

UL File No. E-23018 CSA File No. 4484

Chrome-Plated Hubs (suffix-"CP") are rated NEMA 4X.

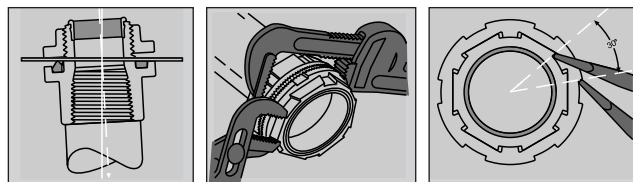
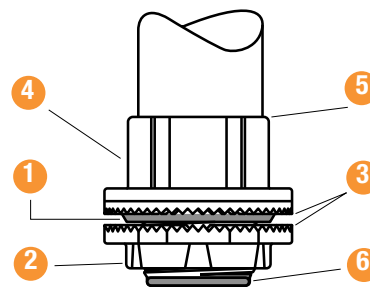
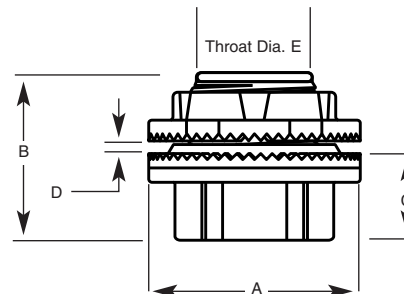


Fig. 1

Fig. 2

Fig. 3





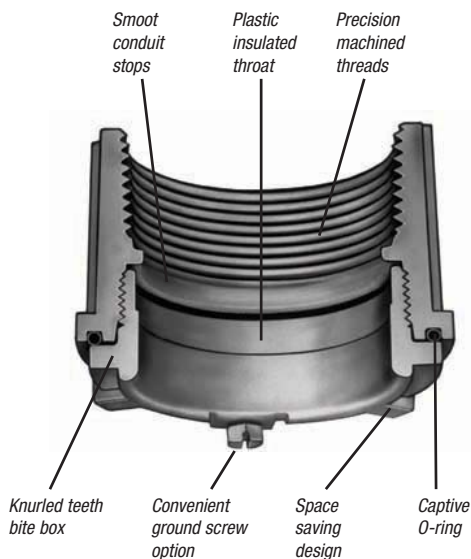
## Rigid and Intermediate Metal Conduit Fittings



HT, HTZ



HTGZ



### Raintight for Rigid or Intermediate Metal Conduit (IMC)

### Chase® Threaded Conduit Hubs

#### Applications:

- A fitting for connecting junction box to junction box, or junction box to the conduit system. The resulting connection maintaining ground continuity is raintight.
- Suitable for use where the system is normally hosed down (NEMA 4) for cleaning.

#### Features/Benefits:

- Plastic insulated throat, precision cast and machined surfaces permit safer wire pulling.
- Chase® design provides maximum space for wiring in the box. Locking nipple sits flush in the enclosure.
- Captive O-ring fits snugly in groove preventing loss and fumbling with parts.
- Knurled inner face of locking nipple provides 360 degrees of locking and bites through box wall to ensure grounding.
- Locking nipple has tightening lugs on two planes for easier assembly in hard to reach field conditions.
- Grounding hubs have a ground screw located within the enclosure providing a tamper-proof ground for device.
- Locking nipple design permits replacement of the box without disassembling the installation.

#### Standard Materials:

- HTZ Series: Certified die cast zinc alloy ZAMAK 3.
- HT Series: Die cast aluminum alloy A360 with less than .004 copper content (copper-free).
- O-ring: Buna N
- Insulating Sleeves: Plastic

#### Standard Finish:

- Aluminum lacquer finish

#### Compliances:

- UL Listed
- CSA Certified
- Suitable for use in Wet Locations
- NEMA 4



# Rigid and Intermediate Metal Conduit Fittings



## Chase® Hub with Insulated Throat

CAT. NO.	HUB SIZE	STD. PKG.	WT. LBS. APP. PER 100
HTZ1	½"	25	26
HTZ2	¾"	25	32
HTZ3	1"	25	45
HTZ4	1¼"	10	58
HTZ5	1½"	10	74
HTZ6	2"	10	93
HTZ7	2½"	5	202
HTZ8	3"	2	250
HTZ9*	3½"	2	300
HTZ10*	4"	2	360

\*Made to order item. Consult factory for lead time and minimum quantities.

## Chase® Hub with Insulated Throat and Ground Screw

CAT. NO.	HUB SIZE	STD. PKG.	WT. LBS. APP. PER 100
HTGZ1	½"	25	22
HTGZ2	¾"	25	34
HTGZ3	1"	25	44
HTGZ4	1¼"	10	61
HTGZ5	1½"	10	75
HTGZ6	2"	10	95
HTGZ7	2½"	5	204
HTGZ8	3"	2	265
HTGZ9	3½"	2	270
HTGZ10	4"	2	360

## Chase® Aluminum Hub with Insulated Throat

CAT. NO.	HUB SIZE	STD. PKG.	WT. LBS. APP. PER 100
HT1	½"	25	12
HT2	¾"	25	14
HT3	1"	25	20
HT4	1¼"	10	27
HT5	1½"	10	32
HT6	2"	10	44
HT7	2½"	5	85
HT8	3"	2	120
HT9	3½"	2	138
HT10	4"	2	155

## HTZ, HTGZ and HT

HUB SIZE	PANEL WIDTH						MIN. G	MAX. H	O-RING SIZE J
	A	B	C	D	E	F			
½"	1⅜	1⅜	¼	⅜	½-14	60	2½	5⁄64	214
¾"	1⅜	1⅜	¼	⅜	¾-14	60	1⅜	1¼	218
1"	1⅜	1⅜	¼	⅜	1-11½	60	1⅜	1⅜	222
1¼"	1⅜	2⅜	¼	¼	1¼-11½	60	1⅜	1⅜	225
1½"	1⅜	2⅜	¼	¼	1½-11½	60	1⅜	2¼	227
2"	1⅜	3⅜	¼	¼	2-11½	60	2⅜	2⅜	231
2½"	2¼	2¼	⅜	¼	2½-8	45	2⅜	3⅜	236
3"	2¼	4⅜	⅜	¼	3-8	45	3⅜	3⅜	241
3½"	2¼	4⅜	⅜	¼	3½-8	45	4	4⅜	245
4"	2⅜	5⅜	⅜	¼	4-8	45	4½	4⅜	248



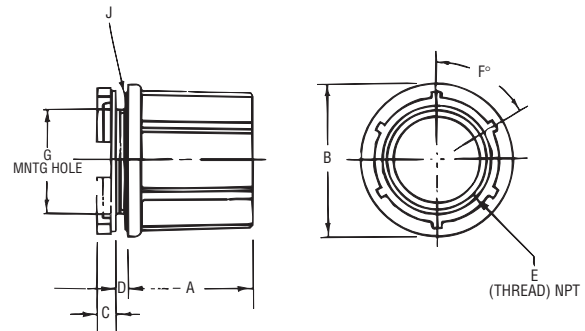
HTZ



HTGZ



HT

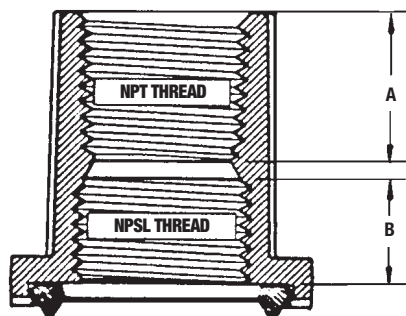
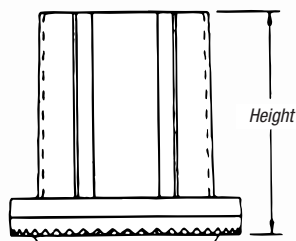
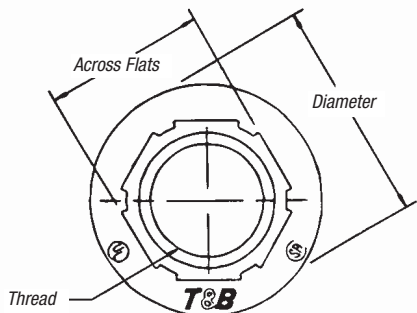


# Rigid and Intermediate Metal Conduit Fittings

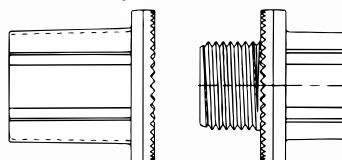
## T&B Bulkhead Fittings



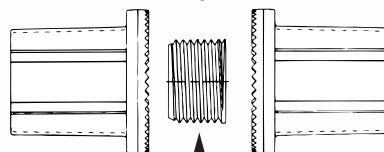
T&B Fittings



Bulkhead Fitting

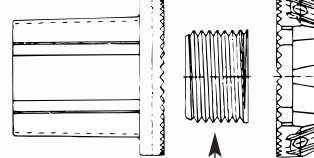


Thru Bulkhead Fitting



Nipple Nut  
Not Included

Thru Bulkhead Hub



Nipple Nut  
Not Included

CAT. NO.                      TRADE SIZE (IN.)

**Bulkhead Fitting**

H050BHD	1/2
H075BHD	3/4
H100BHD	1
H125BHD	1 1/4
H150BHD	1 1/2
H200BHD	2
H250BHD	2 1/2
H300BHD	3
H350BHD	3 1/2
H400BHD	4
H500BHD	5
H600BHD	6

**Thru Bulkhead Fitting**

H050TBF	1/2
H075TBF	3/4
H100TBF	1
H125TBF	1 1/4
H150TBF	1 1/2
H200TBF	2

**Thru Bulkhead Hub**

H050TBH	1/2
H075TBH	3/4
H100TBH	1
H125TBH	1 1/4
H150TBH	1 1/2
H200TBH	2

TRADE SIZE	THREAD	HEIGHT	DIAMETER	ACROSS FLATS	A (IN.)	B (IN.)
1/2"	1/2"-14"	1 1/2"	1 1/16"	1"	3/4	1/2
3/4"	3/4"-14"	1 5/8"	1 1/8"	1 1/4"	25/32	17/32
1"	1"-11 1/2"	1 11/16"	2"	1 1/2"	29/32	19/32
1 1/4"	1 1/4"-11 1/2"	1 25/32"	2 3/8"	1 7/8"	29/32	21/32
1 1/2"	1 1/2"-11 1/2"	1 3/8"	2 1/2"	1 5/8"	29/32	21/32
2"	2"-11 1/2"	1 27/32"	3 1/4"	2 1/2"	1 5/16	21/32
2 1/2"	2 1/2"-8"	2 3/32"	3 3/4"	3 3/8"	1 1/2	7/8
3"	3"-8"	2 3/8"	4"	3 5/8"	1 3/8	29/32
3 1/2"	3 1/2"-8"	2 3/8"	5"	4 1/2"	1 3/8	7/8
4"	4"-8"	2 3/8"	5 1/2"	4 7/8"	1 3/8	7/8
5"	5"-8"	2 3/8"	6 3/8"	5 7/8"	1 13/16	7/8
6"	6"-8"	3"	7 1/8"	7 1/2"	1 1/2	31/32

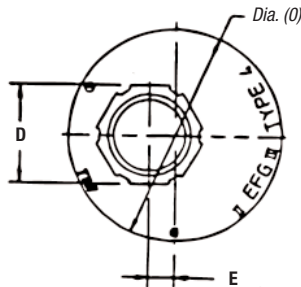
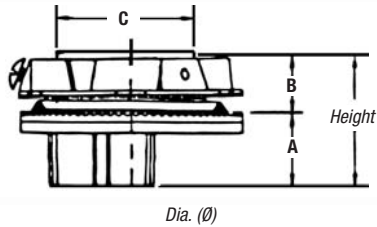
Material — Hub, Body and Locknut: Zinc or copper-free aluminum  
 Insulating Throat: Thermoplastic temp. rating – 105° C  
 Flammability Rating – 94V-0  
 Sealing Ring: Nitrile (BUNA "N")

For Aluminum Bulkheads add suffix A.                      CSA Certified for hazardous locations Class II Groups E,F,G. Class III.  
 For Chrome-Plated Bulkheads add suffix CP.                      UL File No. E-3060  
 Meets NEMA sealing requirements for NEMA 3R, 4 & 13 enclosures.                      CSA File No. 4484

# Rigid and Intermediate Metal Conduit Fittings



## Offset Reducers



CAT. NO.	TRADE SIZE	HEIGHT	DIA. (Ø)	(IN.)				
				A	B	C	D	E
H150-TB0750RGR	1½"-¾"	1 <sup>21</sup> / <sub>32</sub> "	2¼"	1 <sup>5</sup> / <sub>16</sub> "	2 <sup>3</sup> / <sub>32</sub> "	1 <sup>29</sup> / <sub>32</sub> "	1 <sup>1</sup> / <sub>32</sub> "	1 <sup>1</sup> / <sub>32</sub> "
H150-TB1000RGR	1½"-1"	1 <sup>25</sup> / <sub>32</sub> "	2¼"	1 <sup>1</sup> / <sub>16</sub> "	2 <sup>3</sup> / <sub>32</sub> "	1 <sup>29</sup> / <sub>32</sub> "	1 <sup>1</sup> / <sub>16</sub> "	½"
H150-TB1250RGR	1½"-1¼"	1 <sup>25</sup> / <sub>32</sub> "	2¼"	1 <sup>1</sup> / <sub>16</sub> "	2 <sup>3</sup> / <sub>32</sub> "	1 <sup>29</sup> / <sub>32</sub> "	1 <sup>1</sup> / <sub>8</sub> "	½"
H250-TB2000RGR	2½"-2"	2 <sup>1</sup> / <sub>8</sub> "	3¾"	1 <sup>1</sup> / <sub>16</sub> "	1 <sup>5</sup> / <sub>16</sub> "	2 <sup>29</sup> / <sub>32</sub> "	2 <sup>21</sup> / <sub>32</sub> "	¾"

Material – Offset Reducer and Locknut: Zinc or copper-free aluminum

Insulating Throat: Thermoplastic Temp. Rating – 105° C

Flammability Rating – 94V-0

Sealing Ring: Nitrile (BUNA "N")

For Aluminum Offset Reducer add suffix A.

For Chrome-Plated Offset Reducer add suffix CP.

Meets NEMA sealing requirements for NEMA 3R, 4 & 13 enclosures.

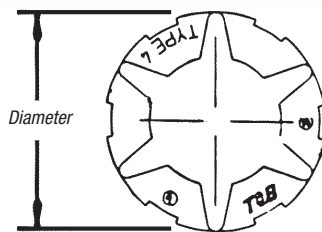
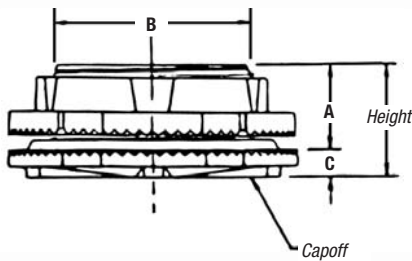
CSA Certified for hazardous locations Class II Groups E.F.G. Class III.

UL File No. E-3060

CSA File No. 4484

T&B Fittings

## Capoffs



CAT. NO.	TRADE SIZE	HEIGHT	DIAMETER	(IN.)		
				A	B	C
H050CAP	½"	1 <sup>13</sup> / <sub>32</sub> "	1 <sup>1</sup> / <sub>16</sub> "	1 <sup>19</sup> / <sub>32</sub> "	2 <sup>7</sup> / <sub>32</sub> "	¾"
H075CAP	¾"	1 <sup>15</sup> / <sub>32</sub> "	1 <sup>1</sup> / <sub>16</sub> "	1 <sup>19</sup> / <sub>32</sub> "	1 <sup>1</sup> / <sub>16</sub> "	¾"
H100CAP	1"	1 <sup>11</sup> / <sub>16</sub> "	2"	1 <sup>1</sup> / <sub>16</sub> "	1 <sup>1</sup> / <sub>16</sub> "	¼"
H125CAP	1¼"	1 <sup>25</sup> / <sub>32</sub> "	2½"	2 <sup>3</sup> / <sub>32</sub> "	1 <sup>21</sup> / <sub>32</sub> "	¼"
H150CAP	1½"	1 <sup>13</sup> / <sub>16</sub> "	2¾"	2 <sup>3</sup> / <sub>32</sub> "	1 <sup>29</sup> / <sub>32</sub> "	¼"
H200CAP	2"	1 <sup>27</sup> / <sub>32</sub> "	3¼"	2 <sup>3</sup> / <sub>32</sub> "	2 <sup>3</sup> / <sub>8</sub> "	¼"
H250CAP	2½"	2 <sup>9</sup> / <sub>32</sub> "	3¾"	¾"	2 <sup>29</sup> / <sub>32</sub> "	¼"
H300CAP	3"	2 <sup>1</sup> / <sub>16</sub> "	4"	¾"	3 <sup>1</sup> / <sub>32</sub> "	1 <sup>1</sup> / <sub>32</sub> "
H350CAP	3½"	2 <sup>9</sup> / <sub>16</sub> "	5"	2 <sup>9</sup> / <sub>32</sub> "	4 <sup>1</sup> / <sub>32</sub> "	1 <sup>1</sup> / <sub>32</sub> "
H400CAP	4"	2 <sup>9</sup> / <sub>16</sub> "	5½"	2 <sup>9</sup> / <sub>32</sub> "	4 <sup>1</sup> / <sub>2</sub> "	1 <sup>1</sup> / <sub>32</sub> "
H500CAP	5"	2 <sup>23</sup> / <sub>32</sub> "	6"	2 <sup>9</sup> / <sub>32</sub> "	5 <sup>1</sup> / <sub>16</sub> "	1 <sup>1</sup> / <sub>32</sub> "
H600CAP	6"	3"	7"	3 <sup>1</sup> / <sub>32</sub> "	6"	1 <sup>1</sup> / <sub>32</sub> "

Material – Capoff and Locknut: zinc or copper-free aluminum

Insulating Throat: Thermoplastic temp. rating – 105° C

Flammability Rating – 94V-0

Sealing Ring: Nitrile (BUNA "N")

For Aluminum Capoff add suffix A.

For Chrome-Plated Capoff add suffix CP.

Meets NEMA sealing requirements for NEMA 3R, 4 & 13 enclosures.

CSA Certified for hazardous locations Class II Groups E.F.G. Class III.

UL File No. E-3060

CSA File No. 4484

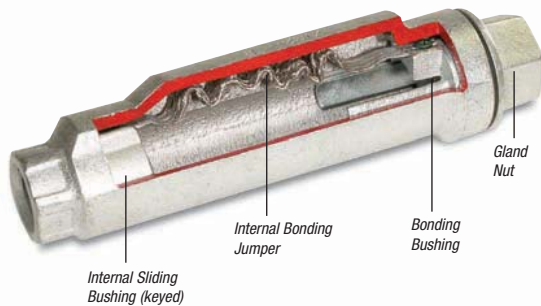


## Rigid and Intermediate Metal Conduit Fittings

T&B Fittings



8" Movement



4" Movement



XJG24-TB

### Innovative Design Makes Installations Easier.

- No disassembly necessary to install
- Fast, simple, and requires fewer steps
- True Internal Bonding Jumper — no external grounding strap required
- Tamper-proof internal jumper protected from the environment
- Exceeds code requirements for long conduit runs to permit linear movement

No disassembly required.

### XJG-TB Rigid Conduit Expansion Coupling

Whenever you install a rigid expansion coupling in a long conduit run, you normally need three hands, two strong backs and lots of patience. Now you can relax. With the no-hassle Rigid Conduit Expansion Coupling, installation's just a few turns and you're done.

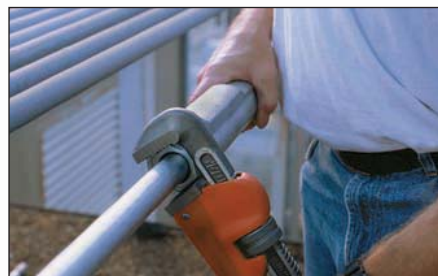
The T&B Rigid Conduit Expansion Coupling features innovations that provide conveniences to the installer, saving time and money on the job. There's no disassembly needed during the installation, requiring fewer tools and less opportunities for lost pieces. It also features a true internal bonding jumper, eliminating the need for external jumpers, so there are fewer parts to buy and install.

If you need a fitting that can give and take without a lot of hassle, reach for T&B's XJG-TB Rigid Conduit Expansion Coupling. It's the latest breakthrough in the industry's leading line of conduit fittings. Contact your local representative for more information regarding the XJG-TB Rigid Conduit Expansion Coupling and the complete line of conduit fittings from the name you trust for quality design and manufacturing, Thomas & Betts.



1

Slide the fitting onto the conduit until it stops at the internal sliding bushing. Tighten and you're ready. No parts to reassemble!



2

With a wrench, tighten the gland nut to compress the Teflon packing, creating a raintight seal around the conduit.



3

Thread the next length of conduit into the other end of the fitting and tighten. You're done!



## Rigid and Intermediate Metal Conduit Fittings



### XJG Conduit Expansion Coupling

CAT NO.	SIZE	MOVEMENT	A DIAMETER	B LENGTH	C HEIGHT
XJG24-TB	¾"	4"	2.43	10.00	2.75
XJG28-TB	¾"	8"	2.43	14.00	2.75
XJG34-TB	1"	4"	2.67	10.00	2.99
XJG38-TB	1"	8"	2.67	14.00	2.99
XJG44-TB	1¼"	4"	3.36	10.56	3.68
XJG48-TB	1¼"	8"	3.36	14.56	3.68
XJG54-TB	1½"	4"	3.36	10.56	3.68
XJG58-TB	1½"	8"	3.36	14.56	3.68
XJG64-TB	2"	4"	3.86	11.25	4.18
XJG68-TB	2"	8"	3.86	15.25	4.18
XJG74-TB	2½"	4"	4.96	12.12	5.25
XJG78-TB	2½"	8"	4.96	16.12	5.25
XJG84-TB	3"	4"	4.96	12.12	5.25
XJG88-TB	3"	8"	4.96	16.12	5.25
XJG94-TB	3½"	4"	6.37	12.87	6.75
XJG98-TB	3½"	8"	6.37	16.87	6.75
XJG104-TB	4"	4"	6.37	12.87	6.75
XJG108-TB	4"	8"	6.37	16.87	6.75
XJG1208-TB	5"	8"	7.99	18.87	8.56

Please consult Technical Services for special orders and availability of products not shown in this list.

### XJG Conduit Expansion Coupling for EMT

CAT NO.	SIZE IN. (MM)	MOVEMENT IN. (MM)	A LENGTH IN. (MM)	B HEIGHT IN. (MM)
XJG24-EMT	4" (101.6)	¾" (21)	17.39 (441.7)	2.75 (69.8)
XJG28-EMT	8" (203.2)	¾" (21)	21.39 (543.3)	2.75 (69.8)
XJG34-EMT	4" (101.6)	1" (27)	17.42 (442.5)	2.99 (75.9)
XJG38-EMT	8" (203.2)	1" (27)	21.42 (544.1)	2.99 (75.9)
XJG44-EMT	4" (101.6)	1¼" (35)	18.27 (464.1)	3.46 (87.88)
XJG48-EMT	8" (203.2)	1¼" (35)	22.27 (565.7)	3.46 (87.88)
XJG54-EMT	4" (101.6)	1½" (41)	18.69 (474.7)	3.68 (93.4)
XJG58-EMT	8" (203.2)	1½" (41)	22.69 (576.3)	3.68 (93.4)
XJG64-EMT	4" (101.6)	2" (53)	19.04 (483.6)	4.18 (106.2)
XJG68-EMT	8" (203.2)	2" (53)	23.04 (585.2)	4.18 (106.2)
XJG74-EMT	4" (101.6)	2½" (63)	23.23 (589.9)	4.52 (114.8)
XJG78-EMT	8" (203.2)	2½" (63)	27.23 (691.6)	4.52 (114.8)
XJG84-EMT	4" (101.6)	3" (78)	24.09 (611.9)	5.25 (133.4)
XJG88-EMT	8" (203.2)	3" (78)	28.09 (713.5)	5.25 (133.4)
XJG94-EMT	4" (101.6)	3½" (91)	28.70 (728.9)	6.00 (152.4)
XJG98-EMT	8" (203.2)	3½" (91)	28.70 (728.9)	6.00 (152.4)
XJG28-TB	4" (101.6)	4" (103)	29.30 (743.9)	6.75 (171.5)
XJG108-EMT	8" (203.2)	4" (103)	29.30 (743.9)	6.75 (171.5)

### Standard Materials / Finish

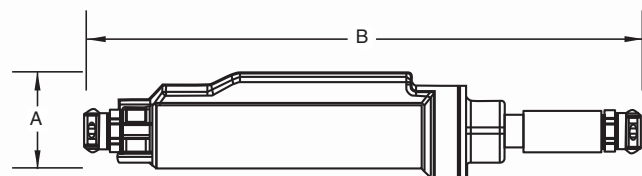
Body .....Ductile Iron, available PVC Coated  
 Internal Bonding Jumper .....Tinned Copper Braid  
 Exterior and Interior Finish .....Zinc Plating, Aluminum Acrylic Paint  
 Packing .....PTFE/Synthetic Fiber Material  
 (Teflon® Coated)

### Suggested Specifications

#### Expansion Fittings for Rigid Steel or Intermediate Metal Conduit

Where raceways require expansion fittings to compensate for thermal expansion and contraction and where expansion fittings and telescoping sections of metal raceway shall be made electrically continuous by bonding jumpers or other means:

- Fitting will be constructed from malleable or ductile iron with exterior and interior zinc plating for corrosion protection.
- The fitting shall be constructed so that disassembly is not required during installation.



XJG24-EMT

#### Listed / Certified By:

UL (File E23018, Std. 514B)  
 Suitable for Wet Locations

CSA (File LR2884, Std. C22.2 No. 18)  
 NEC 250.98

- Fitting shall be raintight after installation.
- The fitting shall have an internal bonding jumper constructed of a tinned copper braid, sized to meet UL fault current test requirements and comply with bonding requirements — NEC article 250.98
- External bonding jumper shall not be required to comply with NEC requirements.
- Accepted Manufacturers: Thomas & Betts - XJG-TB Series

## Rigid and Intermediate Metal Conduit Fittings

T&B Fittings



8123 Series



8130 Series



8120 Series

### Threadless Connector/Coupling

(For Threadless Rigid Metal Conduit and Intermediate Metal Conduit)

#### Application

- To connect and effectively bond threadless rigid metal conduit/intermediate metal conduit to a box or enclosure, or to couple ends of threadless conduit

#### Features

- Steel/Malleable Iron construction
- Case-hardened ring bites into conduit for high-quality continuity and grip
- Nylon insulator firmly secured in place protects conductors and reduces wire pulling effort by as much as 50%; prevents thread damage in handling
- Case-hardened steel locknut or malleable iron locknut designed to provide a positive bond
- Suitable for concrete-tight application
- Capable of carrying ground fault currents up to 10,000 amps RMS (½" through 1½" size) and 20,000 amps RMS (2" and above sizes) for a duration of current 3 cycles

#### Standard Material

Nut, Gland ½" to 1" Steel – 1¼" to 4" Malleable Iron  
 Body . . . . . All Malleable Iron  
 Ring . . . . . Steel (case hardened)  
 Insulator . . . . . Nylon  
 Locknut . . . . . ½" thru 2" Steel (hardened) 2" thru 4" Malleable Iron

#### Standard Finish

Electro Zinc Plated & Chromate Coated

#### Range

8123 & 8120 Series . . . ½" through 4" Size Conduit  
 8130 Series . . . . . ½" through 2" Size Conduit  
 All hub threads . . . . . Straight Pipe (NPS)

#### Conforms to

UL 514B  
 CSA C22.2 No. 18  
 NFPA 70  
 NEMA FB1  
 Federal Specification A-A-50553  
 Federal Standard H-28 (Threads)

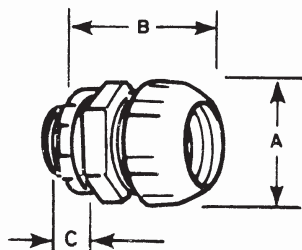
#### Listed/Certified by

UL (UL File No: E-23018)  
 CSA (LR-2884, LR-4484)

Split steel ring with diagonal serrations grips conduit and bites in for positive ground!

### Threadless Connectors — Nylon Insulated

- Makes a permanent connection
- Eliminates need for cutting a thread on conduit
- Insulation helps ensure continuity of service by protecting the conductor at the critical point — the connector bushing
- Malleable iron construction
- Look for the unique T&B blue color, ensuring the highest quality fitting



CAT. NO.		CONDUIT SIZE	DIMENSIONS (IN.)		
NYLON INSUL.	NON-INSUL.		A	B	C
8123	8121	½"	1½	1½	1½
8223	8221	¾"	1½	1¾	1½
8323	8321	1"	1¾	2	¾
8423	8421	1¼"	2	2½	1½
8523	8521	1½"	2½	2¾	¾
8623	8621	2"	3	2¾	2½
8723-TB	8721	2½"	4	3¾	1½
8823	8821	3"	4	4	1½
8853	8851	3½"	5	4	1½
8973	8971	4"	6	4	1½

Available with DURA-PLATE® Finish. UL File No. E-23018 CSA File No. 2884

## Rigid and Intermediate Metal Conduit Fittings

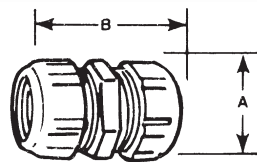


Just tighten with a wrench to make a UL Listed and CSA Certified concrete-tight connection!

### Threadless Couplings



- Eliminates need for conduit threading
- Malleable iron construction



CAT. NO.	SIZE	DIMENSIONS (IN.)	
		A	B
8120	½"	1½/₂	2
8220	¾"	1¾/₂	2¾/₁₆
8320	1"	1¾	2¾/₁₆
8420	1¼"	2¾	2¾/₁₆
8520	1½"	2¾	3¾
8620	2"	3¼	3¾/₁₆
8720	2½"	3¾/₁₆	5¾
8820	3"	4¾/₁₆	5¾
8850	3½"	5¾/₁₆	5¾
8970	4"	5¾/₁₆	5¾

Available with DURA-PLATE® Finish. UL File No. E-23018 CSA File No. 2884

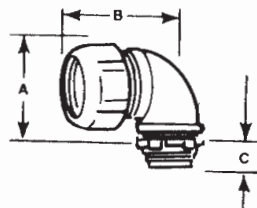
T&B Fittings

Ideal for entering enclosure or conduit body at right angles!

### Threadless Short Elbows — Nylon Insulated



- Eliminates need to thread conduit
- As with straight couplings, makes a concrete-tight connection
- Malleable iron construction



CAT. NO.	SIZE	DIMENSIONS (IN.)		
		A	B	C
8130	½"	1¾/₂	1¾	¾
8131	¾"	1¾	1¾	¾

Available with DURA-PLATE® Finish.

UL File No. E-23018

CSA File No. 2884

# Rigid and Intermediate Metal Conduit Fittings

## Set Screw Connector/Coupling

(For Threadless Rigid Metal Conduit and Intermediate Metal Conduit)



8125 Series



8124 Series

### Application

- To connect and effectively bond threadless rigid metal conduit or intermediate metal conduit to a box or enclosure or to couple ends of threadless conduit

- Coupling provided with positive center stop
- Suitable for concrete-tight application
- Capable of carrying ground fault currents up to 10,000 amps RMS (1/2" through 1 1/2" size) and 20,000 amps RMS (2" and above sizes).

### Standard Finish

Electro Zinc Plated & Chromate Coated

### Features

- Thickwall steel or malleable iron body
- Hardened hex head cup point screw to provide high-quality bond
- Screw captivated, will not vibrate loose
- Nylon insulated throat meets and exceeds all code requirements for bushing:
  - Prevents thinning of insulation
  - Reduces installation effort
  - Prevents first thread damage

### Standard Material

Body	1/2" thru 2" Steel
	2 1/2" thru 4" Malleable Iron
Locknut	1/2" thru 2" Steel (hardened)
	2 1/2" thru 4" Malleable Iron
Screw	Steel (hardened)
Insulator	Nylon

### Listed/Certified by

UL (UL File No: E-23018)  
CSA (LR-2884, LR-4484)

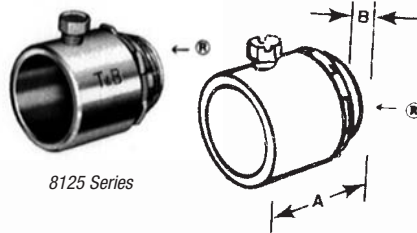
### Conforms to

UL 514B  
CSA C22.2 No. 18  
NFPA 70  
NEMA FB1  
Federal Specification A-A-50553  
Federal Standard H-28 (Threads)

## Eliminates the need for conduit threading!

### Insulated Set-Screw Connector

- Captive hex head screws tighten down onto conduit for positive holding strength and ground
- Furnished with insulated throats to reduce wire-pulling effort by as much as 50%
- Approved concrete-tight



8125 Series



CAT. NO.	CONDUIT SIZE	DIMENSIONS (IN.)	
		A	B
8125	1/2"	1 3/8	1 3/32
8225	3/4"	1 1/2	7/16
8325	1"	1 3/8	5/8
8425	1 1/4"	2	5/8
8525	1 1/2"	2 5/8	5/8
8625-TB	2"	2 1/8	1 1/8
8725-TB	2 1/2"	3 3/8	1
8825	3"	3 1/8	1
8855	3 1/2"	3 3/8	1 1/8
8975	4"	4 3/8	1 1/8

Sizes 1/2"-2" made of steel. Sizes 2 1/2"-4" are malleable iron.

Available with DURA-PLATE® Finish.

UL File No. E-23018 CSA File No. 2884

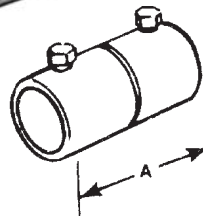
## No need to thread conduit ends when joining rigid conduit!

### Set-Screw Coupling

- Captive hex head screws provide positive holding strength and ground continuity
- Approved concrete-tight



8124 Series



CAT. NO.	CONDUIT SIZE	DIMENSION (IN.)
		A
8124	1/2"	2 1/2
8224	3/4"	2 1/8
8324-TB	1"	2 3/8
8424	1 1/4"	3
8524	1 1/2"	3 3/8
8624	2"	3 3/8
8724	2 1/2"	3 3/8
8824-TB	3"	4 1/4
8854	3 1/2"	4 5/8
8974	4"	5 3/8

Sizes 1/2"-2" made of steel; sizes 2 1/2"-4" are malleable iron.

Available with DURA-PLATE® Finish.

UL File No. E-23018 CSA File No. 2884



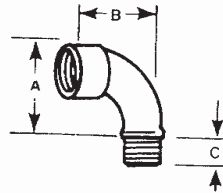
## Rigid and Intermediate Metal Conduit Fittings



Smoothly rounded shoulders protect conductor insulation!

### Bushed Elbows

- Non-insulated
- Malleable iron construction



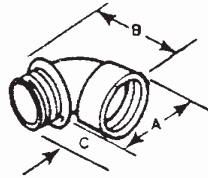
CAT. NO.	SIZE	DIMENSION (IN.)		
		A	B	C
460-TB	½"	1½"	1½"	¾"
461TB	¾"	1½"	2¼"	¾"
462	1"	1½"	2½"	¾"
463	1¼"	2¼"	3"	¾"

Available with DURA-PLATE® Finish. UL File No. E 23018. CSA File No. 2884

Integral insulation ensures a smooth bushing in every fitting!

### Short Elbows — Nylon Insulated

- Malleable iron construction



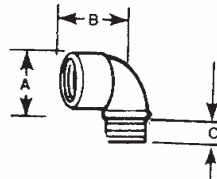
CAT. NO.	SIZE	DIMENSION (IN.)		
		A	B	C
4290	½"	1½"	1¼"	½"
4291	¾"	1½"	1½"	¾"
4292	1"	1½"	1½"	1½"
4293	1¼"	2½"	2½"	1½"
4294	1½"	2½"	2½"	1½"
4295	2"	3"	2½"	1½"

Available with DURA-PLATE® Finish. Not UL or CSA.

For non-insulated applications

### Short Elbows

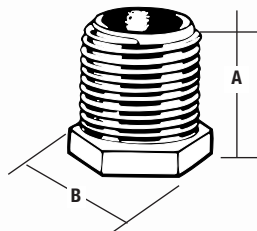
- Malleable iron construction



CAT. NO.	SIZE	DIMENSION (IN.)		
		A	B	C
4250	½"	1½"	1¼"	¾"
4251	¾"	1½"	1½"	½"
4252	1"	1½"	1½"	¾"
4253	1¼"	2½"	2½"	1½"
4254	1½"	2½"	2½"	1½"
4255	2"	3½"	2½"	1½"

Available with DURA-PLATE® Finish. U.L. File #E-23018 CSA File No. 589

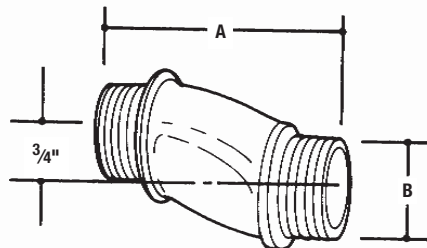
### Conduit Nipples — Die-Cast Zinc, 1" Long



CAT. NO.	SIZE	A	B
HA-211	½"	1"	15/16"
HA-212	¾"	1"	1¾"
HA-213	1"	1"	1¾"

UL File No. E-1275 ½" & ¾" only

### Offset Nipples — Die-Cast Zinc



CAT. NO.	SIZE	A	B
HO-221	½"	2.60"	1.00"
HO-222	¾"	2.62"	1.32"
HO-223	1"	2.68"	1.51"
HO-224	1¼"	2.85"	1.85"
HO-225	1½"	2.88"	2.08"
HO-226	2"	3.19"	2.71"

¾" offset

UL File No. E-1275

# Rigid and Intermediate Metal Conduit Fittings

## Threaded Erickson® 3-Piece Coupling

(For Threaded Rigid Metal Conduit and Intermediate Metal Conduit)

T&B Fittings



674 Series  
675AL Series

### Application

- To couple and effectively bond threaded ends of rigid metal conduit/intermediate metal conduit where neither length of conduit can be rotated

### Features

- Malleable Iron/Steel/Copper-free Aluminum construction
- Free fitting threads ensure easy assembly
- Permits conduit coupling without rotating either conduit
- Provides rigid in-line coupling with high- quality grounding; will not loosen under vibration
- Suitable for concrete-tight application
- Capable of carrying ground fault currents up to 10,000 amps RMS (½" through 1½" size) and up to 20,000 amps RMS (2" and above) (duration of fault current 3 cycles) (674 series tested)

### Standard Material

#### 674 Series

Bushing & Case . . . . . Malleable Iron  
Ring . . . . . Steel & Malleable Iron

#### 675AL Series

Bushing & Case . . . . . Aluminum  
Ring . . . . . Aluminum

### Standard Finish

674 Series: Electro Zinc Plated & Chromate Coated

675AL Series: Degreased

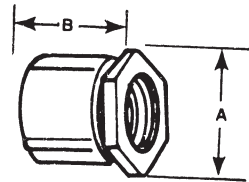
### Range

¾" thru 6" Conduit (malleable iron)  
½" thru 6" Conduit (aluminum)  
All straight pipe threads (NPS)

### Listings/Compliances

UL 514B  
CSA C22.2 No. 18  
NEMA FB1  
NFPA 70-1999 (ANSI)  
Federal Specification A-A-50553  
Federal Standard H-28 (Threads)  
Raintight

*With an ERICKSON® coupling, a conduit run may be completed when neither conduit can be turned. A conduit run may also be broken without taking down the whole run. Conduit joined with ERICKSON® Couplings is rigid and in line and vibration will not loosen the connections. Malleable iron.*



CAT. NO.	ALUM.* CAT. NO.	SIZE	DIMENSIONS (IN.)	
			A	B
674	—	¾"	1 ½"	1 ½"
675	675AL	½"	1 ½ <sub>32</sub> "	1 ¼"
676	676AL	¾"	1 ½ <sub>16</sub> "	1 ½ <sub>32</sub> "
677	677AL	1"	1 ¾ <sub>32</sub> "	1 ½"
678	678AL	1 ¼"	2 ¾"	1 ¾"
679	679AL	1 ½"	2 ¾"	1 ¾ <sub>32</sub> "
680TB	680AL	2"	3 ½ <sub>32</sub> "	2 ¾ <sub>32</sub> "
681	681AL	2 ½"	3 ¾ <sub>16</sub> "	2 ¾ <sub>16</sub> "
682	682AL	3"	4 ¾ <sub>16</sub> "	2 ¾ <sub>32</sub> "
683	683AL	3 ½"	5	3
684	684AL	4"	5 ½"	3 ¾ <sub>16</sub> "
685	685AL	4 ½"	6 ¼"	3 ¾ <sub>32</sub> "
686	686AL	5"	6 ¾ <sub>32</sub> "	3 ¾"
687	687AL	6"	8	4 ¾ <sub>32</sub> "

\*Copper-Free Aluminum concrete-tight. UL Listed and CSA Certified  
UL File No. E-23018 CSA File No. 2884

## Split Couplings

- Ideal for retrofit installations or in tight areas
- Fast installation
- Neoprene gasket provides a concrete-tight seal.
- Joins threaded conduit even when the conduit can't rotate.
- Approved for direct burial

### Specifications

- Material: Malleable Iron
- Gasket: Neoprene
- Plating: Zinc Plated
- Standards: UL Standard 514B, NEMA FB-1



T&B's Split Coupling is a simple method to join threaded conduits in retrofits or in snug areas. Available in ½" to 6".



½" and ¾"  
furnished with  
one screw



1" and 6"  
furnished with  
two screws



CAT. NO.	TRADE SIZE	DIMENSIONS (IN.)			WEIGHT PER 100
		A	B	C	
SPCP50	½"	2"	1 ¼"	1 ¼"	34.4
SPCP75	¾"	2 ½"	1 ¼"	1 ½"	39.4
SPCP100	1"	2 ¾"	1 ¾"	1 ¾"	60.0
SPCP125	1 ¼"	3 ¾"	1 ¾"	2 ¾"	75.0
SPCP150	1 ½"	3 ¾"	1 ¾"	2 ¾"	112.5
SPCP200	2"	3 ¾"	2"	2 ¾"	112.5
SPCP250	2 ½"	4 ¾"	3 ¾"	3 ¾"	275.0
SPCP300	3"	5 ¾"	3 ¾"	4 ¾"	300.0
SPCP350	3 ½"	6 ¾"	3 ¾"	4 ¾"	425.0
SPCP400	4"	6 ¾"	3 ¾"	5 ¾"	500.0
SPCP500	5"	8 ¾"	3 ¾"	6 ¾"	900.0
SPCP600	6"	9 ¾"	4 ¾"	7 ¾"	1,300.0

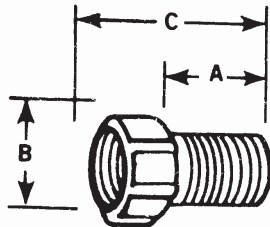
## Rigid and Intermediate Metal Conduit Fittings



The ideal solution for applications requiring longer thread length!

### Panel Connector Extensions

- Will combine with any fitting with a male thread
- Male thread of panel connector extension is 1" long
- Malleable iron construction



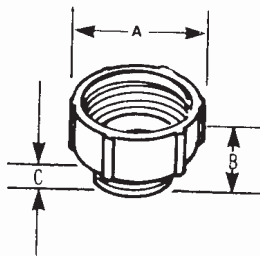
CAT. NO.	SIZE	DIMENSIONS (IN.)		
		A	B	C
1440	1/2"	1 1/4	1 3/32	1 7/8
1441	3/4"	1 3/8	1 11/32	2
1442	1"	1 1/4	1 19/32	1 5/16
1443	1 1/4"	1 1/4	1 15/16	1 5/8

UL File No. E-23018  
CSA File No. 2884

T&B Fittings

Adapt an outlet hole to the next larger size of conduit!

### Male Enlargers\*



CAT. NO.	SIZE	DIMENSIONS (IN.)		
		A	B	C
1245	1/2" to 3/4"	1 13/32	1 1/16	1/2
1246	3/4" to 1"	1 11/16	1 1/4	15/32
1244	1" to 1 1/4"	2 1/16	1 11/32	1/2
1247	1 1/4" to 1 1/2"	2 5/16	1 3/8	9/16

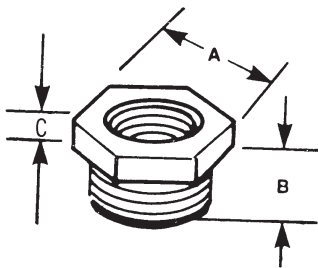
\* All items shown in this chart are suitable for use in hazardous locations where general purpose equipment is specifically permitted by the NEC; Class I, Div. 2; Class II, Div. 1 & 2; Class III, Div. 1 & 2, NEC 501-4(b); 502-4(a)(b); 503-3(a)(b).  
Available with DURA-PLATE® Finish.  
UL File No. E-23018  
CSA File No. 2884

- Built-in bushing covers rough ends of conduit
- Malleable iron construction

Adapt any outlet to the next smaller size of conduit!

### Female Reducers\*

- Hex shoulder for easy wrench tightening
- Malleable iron construction



CAT. NO.	SIZE	DIMENSIONS (IN.)		
		A	B	C
1250	3/4" to 1/2"	1 1/8	5/8	3/16
1261	1" to 1/2"	1 7/16	2 1/32	3/16
1251	1" to 3/4"	1 3/8	1 11/16	3/16
1262	1 1/4" to 1/2"	1 13/16	2 3/32	3/16
1263	1 1/4" to 3/4"	1 13/16	2 3/32	3/16
1252	1 1/2" to 1"	1 3/4	2 5/32	7/32
1253	1 1/2" to 1 1/4"	2	1 7/16	1/4
1254	2" to 1 1/2"	2 3/8	1 3/16	9/32
1255	2 1/2" to 2"	3	1 1/4	3/8
1256	3" to 2 1/2"	3 3/8	1 1/2	1/2
1257	3 1/2" to 3"	4 1/8	1 3/16	1/2
1258	4" to 3 1/2"	4 3/8	1 3/16	1/2

\* All items shown in this chart are suitable for use in hazardous locations where general purpose equipment is specifically permitted by the NEC; Class I, Div. 2; Class II, Div. 1 & 2; Class III, Div. 1 & 2, NEC 501-4(b); 502-4(a) (b); 503-3(a) (b).  
Available with DURA-PLATE® Finish. UL File No. E-23018 CSA File No. 2884

# Rigid and Intermediate Metal Conduit Fittings

## Stainless Steel Pipe Straps

T&B Fittings



Thomas & Betts offers stainless steel pipe straps to support and securely fasten rigid, IMC and EMT conduit. One and two-hole stainless steel straps are ideal for industrial applications such as petro-chemical plants, manufacturing plants, pulp and paper mills, food processing, power plants, refineries and mining operations. Steel City® stainless steel pipe straps are also useful in commercial applications in schools, hospitals, office buildings, airports, casinos and stadiums. To order, contact your local Thomas & Betts authorized distributor and ask about the complete offering of Steel City® straps, clamps and hangers.

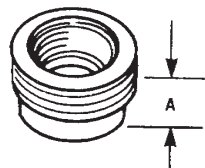
- Higher degree of corrosion resistance than traditional zinc plated or hot-dipped galvanized straps
- One and two-hole straps for EMT sizes ½" through 2"
- One and two-hole straps for Rigid and IMC size ½" through 4"
- 303 Stainless Steel

CAT. NO.	TRADE SIZE	WT. PER 100	HOLE DIA.	STD. PKG.
<b>One-Hole EMT Straps</b>				
TS101-SS	½"	2.21	¼"	25
TS102-SS	¾"	2.49	¼"	25
TS103-SS	1"	3.31	¼"	25
TS104-SS	1¼"	3.64	¼"	10
TS105-SS	1½"	3.87	¼"	5
TS106-SS	2"	4.03	¼"	5
<b>One-Hole Rigid/IMC Straps</b>				
HS100-SS	¾"	2.00	¾"	20
HS101-SS	½"	2.21	¾"	20
HS102-SS	¾"	2.49	¾"	20
HS103-SS	1"	3.48	¾"	20
HS104-SS	1¼"	3.76	¾"	10
HS105-SS	1½"	18.22	¾"	10
HS106-SS	2"	19.69	¾"	5
HS107-SS	2½"	67.21	¾"	5
HS108-SS	3"	76.45	¾"	5
HS110-SS	4"	80.18	¾"	5

CAT. NO.	TRADE SIZE	WT. PER 100	HOLE DIA.	STD. PKG.
<b>Two-Hole EMT Straps</b>				
TS901-SS	½"	2.21	¼"	25
TS902-SS	¾"	3.31	¼"	25
TS903-SS	1"	3.87	¼"	25
TS904-SS	1¼"	7.54	¼"	10
TS905-SS	1½"	12.21	¼"	5
TS906-SS	2"	18.23	¼"	5
<b>Two-Hole Rigid/IMC Straps</b>				
HS901-SS	½"	2.49	¾"	20
HS902-SS	¾"	3.64	¾"	20
HS903-SS	1"	4.15	¾"	20
HS904-SS	1¼"	8.17	¾"	10
HS905-SS	1½"	17.50	¾"	10
HS906-SS	2"	21.37	¾"	5
HS907-SS	2½"	21.54	¾"	5
HS908-SS	3"	25.72	¾"	5
HS909-SS	3½"	27.27	¾"	5
HS910-SS	4"	31.70	¾"	5

Reduces threaded opening in conduit bodies or any female threaded fitting!

## Threaded Reducers



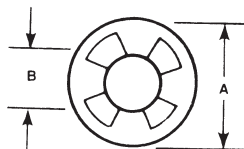
- Smooth, built-in bushing completely covers rough ends of conduit
- Malleable iron or steel construction (steel through 606, also 614 and 615)

CAT. NO.	STL. ON MI		SIZE	DIMENSION (IN.)	
	ALUM.			A	
600TB	600ALTB		½" to ¾"	¾"	5/16"
601TB	601ALTB		¾" to 1"	¾"	5/16"
602TB	602ALTB		1" to 1½"	¾"	5/8"
603TB	603ALTB		1" to 1½"	¾"	5/8"
604TB	604ALTB		1¼" to 1½"	1 1/8"	13/16"
605	605AL		1¼" to 1½"	1 1/8"	7/8"
606	606AL		1¼" to 1"	1 5/16"	15/16"
607	607AL		1½" to 1"	1 3/16"	13/16"
608	608AL		1½" to 1"	1 3/16"	13/16"
609	609AL		1½" to 1"	1 5/16"	15/16"
610	610AL		1½" to 1¼"	1 3/4"	¾"
611	611AL		2" to 1½"	1 5/8"	15/16"
612	612AL		2" to 1½"	1 5/8"	15/16"
613	613AL		2" to 1"	1 5/16"	15/16"
614	614AL		2" to 1¼"	1 5/16"	15/16"
615	615AL		2" to 1½"	1 7/8"	7/8"

UL File No. E-23018  
CSA File No. 2884

Reduce knockout hole in outlet box!

## Reducing Washers



- Used in pairs
- Interlock to form a rib that centers washers and conduit in knockout
- Galvanized steel construction

CAT. NO.	SIZE	DIMENSIONS (IN.)	
		A	B
3700	¾" to ¾"	1 1/8"	45/64"
3701	¾" to 1"	1 1/8"	7/8"
3702	1" to 1 1/8"	1 1/8"	45/64"
3703	1" to 1 1/8"	1 1/8"	7/8"
3704	1" to 1 1/8"	1 1/8"	1 1/32"
3705	1¼" to 1 1/8"	2"	45/64"
3706	1¼" to 1 1/8"	2"	7/8"
3707	1¼" to 1 1/8"	2"	1 1/32"
3708	1¼" to 1"	2"	1 23/64"
3709	1½" to 1 1/8"	2 1/4"	45/64"
3710	1½" to 1 1/8"	2 1/4"	7/8"
3711	1½" to 1 1/8"	2 1/4"	1 1/32"
3712	1½" to 1"	2 1/4"	1 23/64"
3713	1½" to 1 1/8"	2 1/4"	1 23/64"
3714	2" to 1 1/8"	2 1/4"	7/8"
3715	2" to 1 1/8"	2 1/4"	1 1/32"
3716	2" to 1"	2 1/4"	1 23/64"
3717	2" to 1 1/8"	2 1/4"	1 23/64"
3718	2" to 1 1/8"	2 1/4"	1 31/32"

UL File No. E-13938  
CSA File No. 2884



# Rigid and Intermediate Metal Conduit Fittings



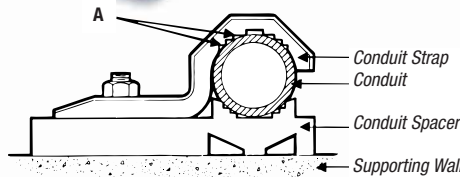
## For Rigid Metal Conduit and Intermediate Metal Conduit Conduit Straps

### Application

- To support and securely fasten rigid metal conduit and intermediate metal to the supporting surface

### Features

- Rugged malleable iron/copper-free aluminum construction — snugly fits on the conduit
- Designed to prevent accumulation of moisture and start of corrosion on vertical run of conduit (A)
- Galvanized finish 1275 Series
- Copper-free aluminum 1276AL Series



### Standard Material

1275 Series . . . . . 1976AL Series  
Malleable Iron . . . . . All copper-free aluminum

### Standard Finish

1275 Series . . . . . 1276AL Series  
Hot Dipped . . . As Cast Galvanized

### Range

1275 Series . . . . . 1276AL Series  
3/8" through . . . . . 1/2" through 6"  
conduit 6" conduit

### Listed/Certified by

CSA (LR-2884, LR-4484)

### Conforms to

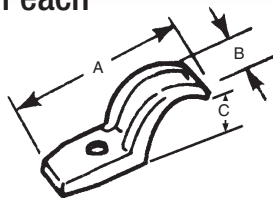
CSA C22.2 No. 18  
NFPA 70

T&B Fittings

## Designed for snug fit on each size of conduit!

### Pipe Straps — Malleable Iron or Aluminum

- High reinforcing ribs on each side increase strength and reduce weight
- Available in malleable iron with hot-dipped galvanized finish or in copper-free aluminum



CAT. NO.		SIZE	A	B	C	SCREW SIZE
MAL. IRON	ALUM.					
1275†	1275AL	3/8"	1 7/8"	1 1/16"	3/4"	#12
1276†	1276AL†	1/2"	2 3/32"	2 1/32"	1 1/32"	1/4"
1277†	1277AL†	3/4"	2 7/16"	1 1/16"	1 1/32"	1/4"
1278†	1278AL†	1"	3"	3/4"	1 1/32"	1/4"
1279†	1279AL†	1 1/4"	3 3/4"	1 3/16"	1 1/8"	5/16"
1280†	1280AL	1 1/2"	4 1/16"	1 5/16"	2 1/8"	3/8"
1281	1281AL	2"	5 3/16"	1 1/8"	2 1/64"	7/16"
1282*	1282AL	2 1/2"	5 9/16"	1 1/2"	2 3/4"	1/2"
1283*	1283AL	3"	6 1/16"	1 3/8"	3 1/32"	1/2"
1284	1284AL	3 1/2"	7 13/32"	1 3/4"	3 29/32"	5/8"
1285*	1285AL	4"	8 5/16"	1 7/8"	4 1/32"	5/8"
1286	—	4 1/2"	9 9/16"	1 15/16"	4 1/16"	5/8"
1287	—	5"	9 5/16"	2"	5 1/32"	5/8"
1288	—	6"	11 1/2"	2 1/8"	6 1/32"	5/8"

\* May be used with EMT of same size.

UL not applicable.

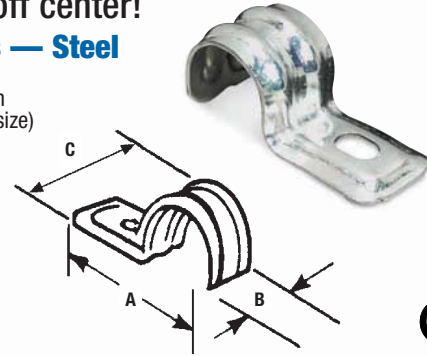
† Not snap-on type.

CSA File No. 2884

## Elongated bolt hole makes alignment easy, even when mounting-surface holes are off center!

### Pipe Straps — Steel

- Snap-on design (except for 3/8" size)
- Rugged steel construction



CAT. NO.	CONDUIT SIZE	A	B	C	SCREW SIZE
1210†	3/8"	1 1/32"	3/4"	1 1/16"	1/4"
1211	1/2"	2	3/4"	1 5/16"	1/4"
1212	3/4"	2 5/16"	3 3/4"	1"	1/4"
1213	1"	3 1/16"	3/4"	1 17/64"	1/4"
1214	1 1/4"	2 31/64"	1 3/8"	1 9/16"	3/8"
1215	1 1/2"	3 23/32"	1 13/16"	1 1/16"	3/8"
1216	2"	4 1/16"	2 5/16"	2 3/16"	3/8"

† Not snap-on type.

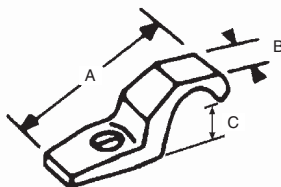
UL not applicable.

CSA File No. 2884

## PVC coating offers high corrosion resistance!

### PVC-Coated Straps for Rigid Conduit

- Designed to fit each size of conduit snugly
- High reinforcing ribs on each side increase strength and reduce weight
- Malleable iron construction



CAT. NO.	SIZE	BOLT SIZE	DIMENSIONS (IN.)		
			A	B	C
1275CR	3/8"	1/4"	1 1/8"	1 1/16"	3/4"
1276CR	1/2"	1/4"	2 1/32"	2 1/32"	1 1/32"
1277CR	3/4"	1/4"	2 1/16"	1 1/16"	1 1/32"
1278CR	1"	1/4"	3	3/4"	1 17/32"
1279CR	1 1/4"	3/8"	3 3/4"	1 3/16"	1 7/8"
1280CR	1 1/2"	3/8"	4 1/16"	1 5/16"	2 1/8"
1281CR	2"	1/2"	5 5/16"	1 1/8"	2 17/64"

UL not applicable.

United States  
Tel: 901.252.8000  
800.816.7809  
Fax: 901.252.1354

Canada  
Tel: 450.347.5318  
Fax: 450.347.1976

Technical Services  
Tel: 888.862.3289

**Thomas & Betts**

www.tnb.com

# Rigid and Intermediate Metal Conduit Fittings

## Conduit Spacers

(For Rigid Metal Conduit, Intermediate Metal Conduit and Electrical Metallic Tubing)



1350 Series



1351 Series

### Application

- Provides mounting surface for conduit where installation requires air space between conduit and supporting surface

### Features

- Prevents conduit rusting from wall condensation
- Spacers can be stacked one atop the other, facilitating installation and eliminating expensive conduit offsetting (A)
- Designed to cover wide range; marked with accurate size marking for proper positioning (B)
- Galvanized finish on 1350 Series
- Copper-free aluminum alloy, 1350AL Series

### Standard Material

1350 Series. . . . . 1350AL Series  
Malleable Iron. . . . . Copper-free aluminum

### Standard Finish

1350 Series. . . . . 1350AL Series  
Hot Dipped . . . . . As Cast Galvanized

### Range

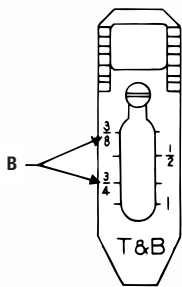
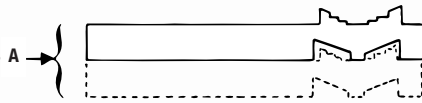
½" through 6" conduit

### Listed/Certified by

CSA (LR-2884, LR-4484, LR-4484)

### Conforms to

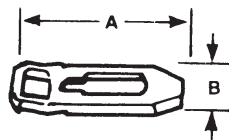
CSA C22.2 No. 18  
NFPA 70



Eliminates the need for costly offset-bending conduit and the possibility of corrosive moisture traps when conduit is mounted directly to a surface!

## Pipe Spacers

- Used with T&B conduit straps to provide space between conduit and mounting surface
- Premountable and stackable to eliminate offsetting
- Malleable iron construction with hot-dipped galvanized finish



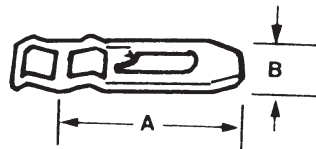
CAT. NO.		SIZE	SCREW SIZE	DIMENSIONS (IN.)	
MAL. IRON	ALUM.			A	B
1350	1350AL	½", ¾", 1"	#7	3"	⅞"
1351	1351AL	1¼"-1½"-2"	#12	5"	1⅞"
1352	1352AL	2½"-3"	#12	9⅞"	1¾"
1353	1353AL	3½"-4"	#14	7⅞"	2"
1354	—	4½"-5"-6"	#16	10⅞"	2⅞"

Conforms to NEC SECT. 300-5-c. UL not applicable. CSA File Nos. 2884 and 4484.

Prevents conduit rusting from wall condensation!

## Pipe Spacers — PVC Coated

- Eliminates the need for offset-bending of conduit
- Can be stacked for offsets on wall or into outlet box
- Corrosion-resistant, PVC-coated malleable iron construction



CAT. NO.	CONDUIT SIZE	SCREW SIZE	DIMENSIONS (IN.)	
			A	B
1350CR	½"-¾"-1"	#7	3	⅞
1351CR	1¼"-1½"-2"	#12	5	⅞
1352CR	2½"-3"	#12	6⅞	¾
1353CR	3½"-4"	#14	7⅞	2
1354CR	4½"-5"-6"	#16	10⅞	2⅞

UL not applicable. Conforms to NEC SECT. 300-5-c.



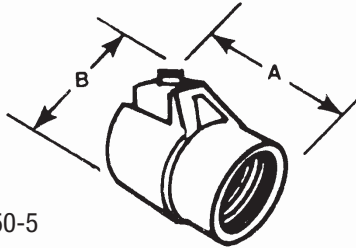
## Rigid and Intermediate Metal Conduit Fittings



One-piece fitting couples armored cable or flexible conduit to threaded rigid conduit!

### TITE-BITE® Combination Couplings — Armored Cable for Threaded Rigid

- Tite-Bite® wedge holds conduit securely with a double grip
- When used with a Chase® nipple, this fitting will connect flexible conduit to outlet boxes, enabling more wiring space in the box than the usual connector
- UL Listed as a grounding means under NEC 350-5
- Malleable iron construction



CAT. NO.	SIZE	DIMENSIONS (IN.)	
		A	B
440	1/2"	1 1/8"	1 27/32"
441	3/4"	1 1/4"	2 1/8"
442	1"	2"	2 17/32"

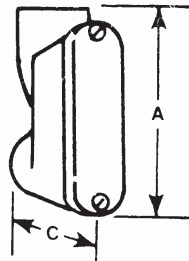
UL File No. E-23018  
CSA File No. 2884

T&B Fittings

Mount flat against wall, eliminating the need to offset conduit!

### Entrance Ells

- Designed for a straight pull in either direction
- Carefully bushed
- Make it easy to pull heavy wires without damage to insulation
- Made of copper-free aluminum



CAT. NO.	CONDUIT SIZE	DIMENSIONS (IN.)	
		A	C
1490	1/2"	3"	1 19/32"
1491	3/4"	3 3/16"	1 1/8"
1492	1"	4 1/4"	2 29/64"
1493	1 1/4"	5 31/64"	2 13/16"
1494	1 1/2"	6 1/4"	2 1/8"
1495	2"	6 3/4"	3 3/16"
1496	2 1/2"	13 3/64"	5 1/8"
1497	3"	13 3/64"	6 1/2"
1498	3 1/2"	16 7/32"	7 17/32"
1499	4"	16 7/32"	7 17/32"

UL File No. E-23018. CSA File Nos. 2884 and 589

Adjustable design fits a wide range of flange sizes!

### Adjustable Beam Clamps

- Includes bolts
- Steel construction

CAT. NO.	DESCRIPTION
700TB	Fits Flange 2 1/4"–7 3/8"
701	Fits Flange 7"–12"
703	Special Bolt and 3 Nuts

CSA File No. 2884.

Fits any flange, tapered or straight, up to 5/8" thick!

### Conduit Supports

- For use with standard rigid conduit, EMT or IMC
- Broad hook holds conduit at any desired angle
- Malleable iron construction



CAT. NO.	SIZE
690	1/2"
691TB	3/4"
692TB	1"
693TB	1 1/4"

CSA File No. 2884