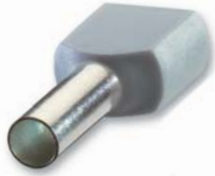


Sta-Kon® Insulated Ferrules



Features

- Ferrules ensure reliable electrical connections when terminating conductors in screw clamp terminal blocks.
- Fraying and breaking of wire strands is prevented and the possibility of an unreliable connection is minimized.
- Insulated ferrules prevent conductor breakage due to bending, wire stress or vibration, while facilitating wire insertions into the terminal block clamp.
- Ferrules are the preferred alternative to twisting wire stands or tinning the wire end before terminating into a terminal block.
- Ferrules are thin-walled copper tubes, which are mechanically crimped onto the ends of stranded wires.
- They are easy to use – simply strip the wire, slide the ferrule onto the end of the wire and crimp.

How to Apply a Ferrule

- Strip the insulation from the end of the wire and insert into the insulated end of the ferrule.
- Using the designated crimping tool, place the metal shaft into the tool's appropriate slot. Compress the tool to make a crescent-shape depression along the length of the ferrule.
- Insert the crimped ferrule into the terminal block.
- Tighten the ferrule and wire into the terminal block.

Materials

- High conductivity copper
- Tin plating



Insulated Ferrules

Cat. No.	Conductor Section		Color	Dimensions Inches/MM					Installation Tooling	Bag Pkg. Qty.	Case Pkg. Qty.
	AWG	MM²		A	B	øC	øD	E			
F2020	22	0.50	WHITE	.453 / 11.5	.236 / 6.0	.043 / 1.1	.098 / 2.5	.006 / 0.15	T1, T3 & ERG-2	500	5000
F2021	22	0.50	WHITE	.531 / 13.5	.315 / 8.0	.043 / 1.1	.098 / 2.5	.006 / 0.15	T1, T3 & ERG-2	500	10000
F2022	22	0.50	WHITE	.610 / 15.5	.394 / 10.0	.043 / 1.1	.098 / 2.5	.006 / 0.15	T1, T3 & ERG-2	500	5000
F2023	20	0.75	GREY	.472 / 12.0	.236 / 6.0	.051 / 1.3	.110 / 2.8	.006 / 0.15	T1, T3 & ERG-2	500	5000
F2024	20	0.75	GREY	.551 / 14.0	.315 / 8.0	.051 / 1.3	.110 / 2.8	.006 / 0.15	T1, T3 & ERG-2	500	10000
F2025	20	0.75	GREY	.630 / 16.0	.394 / 10.0	.051 / 1.3	.110 / 2.8	.006 / 0.15	T1, T3 & ERG-2	500	5000
F2026	20	0.75	GREY	.709 / 18.0	.472 / 12.0	.051 / 1.3	.110 / 2.8	.006 / 0.15	T1, T3 & ERG-2	500	5000
F2027	20	1.00	RED	.492 / 12.5	.236 / 6.0	.059 / 1.5	.118 / 3.0	.006 / 0.15	T1, T3 & ERG-2	500	5000
F2028	20	1.00	RED	.571 / 14.5	.315 / 8.0	.059 / 1.5	.118 / 3.0	.006 / 0.15	T1, T3 & ERG-2	500	10000
F2029	20	1.00	RED	.650 / 16.5	.394 / 10.0	.059 / 1.5	.118 / 3.0	.006 / 0.15	T1, T3 & ERG-2	500	5000
F2030	20	1.00	RED	.728 / 18.5	.472 / 12.0	.059 / 1.5	.118 / 3.0	.006 / 0.15	T1, T3 & ERG-2	500	5000
F2031	16	1.50	BLACK	.571 / 14.5	.315 / 8.0	.071 / 1.8	.134 / 3.4	.006 / 0.15	T1, T3 & ERG-2	500	10000
F2032	16	1.50	BLACK	.650 / 16.5	.394 / 10.0	.071 / 1.8	.134 / 3.4	.006 / 0.15	T1, T3 & ERG-2	500	5000
F2033	16	1.50	BLACK	.728 / 18.5	.472 / 12.0	.071 / 1.8	.134 / 3.4	.006 / 0.15	T1, T3 & ERG-2	500	5000
F2034	16	1.50	BLACK	.965 / 24.5	.708 / 18.0	.071 / 1.8	.134 / 3.4	.006 / 0.15	T1, T3 & ERG-2	500	5000
F2035	14	2.50	BLUE	.591 / 15.0	.315 / 8.0	.091 / 2.3	.165 / 4.2	.006 / 0.15	T1, T3 & ERG-2	500	10000
F2036	14	2.50	BLUE	.748 / 19.0	.472 / 12.0	.091 / 2.3	.165 / 4.2	.006 / 0.15	T1, T3 & ERG-2	500	5000
F2037	14	2.50	BLUE	.984 / 25.0	.708 / 18.0	.091 / 2.3	.165 / 4.2	.006 / 0.15	T1, T3 & ERG-2	500	5000
F2038	12	4.00	GREY	.889 / 17.5	.394 / 10.0	.114 / 2.9	.189 / 4.8	.008 / 0.20	T3 & ERG-2	500	5000
F2039	12	4.00	GREY	.787 / 20.0	.472 / 12.0	.114 / 2.9	.189 / 4.8	.008 / 0.20	T3 & ERG-2	500	5000
F2040	12	4.00	GREY	1.024 / 26.0	.708 / 18.0	.114 / 2.9	.189 / 4.8	.008 / 0.20	T3 & ERG-2	100	1000
F2041	10	6.00	YELLOW	.787 / 20.0	.472 / 12.0	.142 / 3.6	.244 / 6.2	.008 / 0.20	T3 & ERG-2	100	1000
F2042	10	6.00	YELLOW	.984 / 25.0	.708 / 18.0	.142 / 3.6	.244 / 6.2	.008 / 0.20	T3 & ERG-2	100	1000
F2043	8	10.00	RED	.827 / 21.0	.472 / 12.0	.181 / 4.6	.295 / 7.5	.008 / 0.20	T3 & ERG-2	100	1000
F2044	8	10.00	RED	1.063 / 27.0	.708 / 18.0	.181 / 4.6	.295 / 7.5	.008 / 0.20	T3 & ERG-2	100	1000
F2045	6	16.00	BLUE	.906 / 23.0	.472 / 12.0	.236 / 6.0	.346 / 8.8	.008 / 0.20	ERG-2	100	1000
F2046	6	16.00	BLUE	1.142 / 29.0	.708 / 18.0	.236 / 6.0	.346 / 8.8	.008 / 0.20	ERG-2	50	1000
F2047	4	25.00	YELLOW	1.142 / 29.0	.630 / 16.0	.295 / 7.5	.433 / 11.0	.008 / 0.20	ERG-2	50	500
F2048	4	25.00	YELLOW	1.220 / 31.0	.708 / 18.0	.295 / 7.5	.433 / 11.0	.008 / 0.20	ERG-2	50	500
F2049	4	25.00	YELLOW	1.378 / 35.0	.866 / 22.0	.295 / 7.5	.433 / 11.0	.008 / 0.20	ERG-2	50	500
F2050	2	35.00	RED	1.181 / 30.0	.630 / 16.0	.335 / 8.5	.492 / 12.5	.008 / 0.20	ERG-2	50	500
F2051	2	35.00	RED	1.260 / 32.0	.708 / 18.0	.335 / 8.5	.492 / 12.5	.008 / 0.20	ERG-2	50	500
F2052	2	35.00	RED	1.535 / 39.0	.984 / 25.0	.335 / 8.5	.492 / 12.5	.008 / 0.20	ERG-2	50	500
F2053	1/0	50.00	BLUE	1.417 / 36.0	.787 / 20.0	.413 / 10.5	.591 / 15.0	.014 / 0.35	ERG-2	50	500
F2054	1/0	50.00	BLUE	1.614 / 41.0	.984 / 25.0	.413 / 10.5	.591 / 15.0	.014 / 0.35	ERG-2	50	500
F4004	26	0.14	Grey	.413/10.5	.236/6.0	.031/8.0	.079/2.0	.010/25	T3, ERG2	500	10,000
F4005	26	0.14	Grey	.492/12.5	.315/8.0	.031/8.0	.079/2.0	.010/25	T3, ERG2	500	10,000
F4006	24	0.25	Yellow	.413/10.5	.236/6.0	.031/8.0	.079/2.0	.010/25	T3, ERG2	500	10,000
F4007	24	0.25	Yellow	.492/12.5	.315/8.0	.031/8.0	.079/2.0	.010/25	T3, ERG2	500	10,000
F4008	22	0.34	Purple	.413/10.5	.236/6.0	.031/8.0	.079/2.0	.010/25	T3, ERG2	500	10,000
F4009	22	0.34	Purple	.492/12.5	.315/8.0	.031/8.0	.079/2.0	.010/25	T3, ERG2	500	10,000

Ferrule Dimensions conform to DIN 46228, Part 4.