

AN-2022 LMZ1050x Evaluation Board

User's Guide



Literature Number: SNVA421C
January 2010—Revised August 2010

1	Introduction	6
2	Board Specifications	6
3	Evaluation Board Design Concept	6
4	Additional Component Footprints	6
5	Component Circuit Schematic	7
6	Complete Circuit Schematic	8
7	Connection Diagram	9
8	Performance Characteristics	9
9	Circuit Example: Complies with EN55022 Class B Radiated Emissions	14
10	PCB Layout Diagram	16

List of Figures

1	Component Schematic for Evaluation Board.....	7
2	Complete Evaluation Board Schematic	8
3	Efficiency Measurement Setup	9
4	Output Voltage Ripple Measurement Setup	9
5	Current Derating vs. Ambient Temperature LMZ10503, $V_{IN} = 5.0V$, $\theta_{JA} = 20^{\circ}C/W$	9
6	Current Derating vs. Ambient Temperature LMZ10504, $V_{IN} = 5.0V$, $\theta_{JA} = 20^{\circ}C/W$	10
7	Current Derating vs. Ambient Temperature LMZ10505, $V_{IN} = 5.0V$, $\theta_{JA} = 20^{\circ}C/W$	10
8	Current Derating vs. Ambient Temperature LMZ10503, $V_{IN} = 3.3V$, $\theta_{JA} = 20^{\circ}C/W$	10
9	Current Derating vs. Ambient Temperature LMZ10504, $V_{IN} = 3.3V$, $\theta_{JA} = 20^{\circ}C/W$	11
10	Current Derating vs. Ambient Temperature LMZ10505, $V_{IN} = 3.3V$, $\theta_{JA} = 20^{\circ}C/W$	11
11	Output Voltage Ripple $V_{IN} = 5V$, $V_{OUT} = 2.5V$, $I_{OUT} = 3A$, $4A$, & $5A$ LMZ10503 / LMZ10504 / LMZ10505	11
12	Load Transient Response $V_{IN} = 5.0V$, $V_{OUT} = 2.5V$ LMZ10503, $I_{OUT} = 400$ mA to $2.7A$, 20 MHz Bandwidth Limit	12
13	Load Transient Response $V_{IN} = 5V$, $V_{OUT} = 2.5V$ LMZ10504, $I_{OUT} = 400$ mA to $3.6A$, 20 MHz Bandwidth Limit	12
14	Output Voltage Ripple $V_{IN} = 3.3V$, $V_{OUT} = 2.5V$, $I_{OUT} = 3A$, $4A$, & $5A$ LMZ10503 / LMZ10504 / LMZ10505....	12
15	Load Transient Response $V_{IN} = 3.3V$, $V_{OUT} = 2.5V$ LMZ10503, $I_{OUT} = 300$ mA to $2.7A$, 20 MHz Bandwidth Limit	13
16	Load Transient Response $V_{IN} = 3.3V$, $V_{OUT} = 2.5V$ LMZ10504, $I_{OUT} = 400$ mA to $3.6A$, 20 MHz Bandwidth Limit	13
17	Load Transient Response $V_{IN} = 5.0V$, $V_{OUT} = 2.5V$ LMZ10505, $I_{OUT} = 500$ mA to $4.5A$, 20 MHz Bandwidth Limit	13
18	Load Transient Response $V_{IN} = 3.3V$, $V_{OUT} = 2.5V$ LMZ10505, $I_{OUT} = 500$ mA to $4.5A$, 20 MHz Bandwidth Limit	14
19	Component Schematic, $V_{IN} = 5V$, $V_{OUT} = 2.5V$, Complies with EN55022 Class B Radiated Emissions.....	14
20	Radiated Emissions (EN55022, Class B) $V_{IN} = 5V$, $V_{OUT} = 2.5V$, $I_{OUT} = 3A$ Tested on LMZ10503 Evaluation Board	15
21	Radiated Emissions (EN55022, Class B) $V_{IN} = 5V$, $V_{OUT} = 2.5V$, $I_{OUT} = 4A$ Tested on LMZ10504 Evaluation Board	15
22	Radiated Emissions (EN55022, Class B) $V_{IN} = 5V$, $V_{OUT} = 2.5V$, $I_{OUT} = 5A$ Tested on LMZ10505 Evaluation Board	15
23	Top Layer	16
24	Internal Layer I (Ground)	16
25	Internal Layer II (Ground)	17
26	Bottom Layer	17

List of Tables

1	Bill of Materials for Evaluation Board, $V_{IN} = 3.3V$ to $5V$, $V_{OUT} = 2.5V$	7
2	Output Voltage Setting ($R_{fb1} = 75\text{ k}\Omega$).....	7
3	Bill of Materials.....	14

AN-2022 LMZ1050x Evaluation Board

The LMZ1050x SIMPLE SWITCHER® power module is a complete, easy-to-use DC-DC solution capable of driving up to 3A, 4A, or 5A load with exceptional power conversion efficiency, output voltage accuracy, line and load regulation. The LMZ1050x is available in an innovative package that enhances thermal performance and allows for hand or machine soldering.

1 Introduction

The LMZ1050x SIMPLE SWITCHER® power module is a complete, easy-to-use DC-DC solution capable of driving up to 3A, 4A, or 5A load with exceptional power conversion efficiency, output voltage accuracy, line and load regulation. The LMZ1050x is available in an innovative package that enhances thermal performance and allows for hand or machine soldering.

The LMZ1050x can accept an input voltage rail between 2.95V and 5.5V and deliver an adjustable and highly accurate output voltage as low as 0.8V. One megahertz fixed frequency PWM switching provides a predictable EMI characteristic. Two external compensation components can be adjusted to set the fastest response time, while allowing the option to use ceramic and/or electrolytic output capacitors. Externally programmable soft-start capacitor facilitates controlled startup. The LMZ1050x is a reliable and robust solution with the following features: lossless cycle-by-cycle peak current limit to protect for over current or short-circuit fault, thermal shutdown, input under-voltage lock-out, and pre-biased startup.

2 Board Specifications

- $V_{IN} = 2.95V$ to 5.5V
- $V_{OUT} = 2.5V$ (default output voltage setting, refer to [Table 2](#) for other output settings)
- $\pm 2.5\%$ feedback voltage accuracy at 2.5V output (Including line and load regulation from $T_J = -40^\circ C$ to $125^\circ C$)
- $\pm 1.63\%$ feedback voltage accuracy over temperature
- $I_{OUT} = 0A$ to 3A, 4A, and 5A
- $\theta_{JA} = 20^\circ C / W$, $\theta_{JC} = 1.9^\circ C / W$
- Designed on four layers, the top and bottom layers are 1 oz. copper and the two inner layers are 1/2 oz. copper weight
- Measures 2.25 in. x 2.25 in. (5.8 cm x 5.8 cm) and is 62mil (.062") thick on a FR4 laminate

3 Evaluation Board Design Concept

The evaluation board is designed to demonstrate low conducted noise on the input and output lines, as seen in [Figure 11](#) and [Figure 14](#). Four input capacitors ($C_{in1} - C_{in4}$) and three output capacitors ($C_{o1} - C_{o3}$) are populated for this purpose. All the input and output filter capacitors are not necessary to comply with radiation standards. For a circuit example that passes radiated emissions standards (EN55022, class B) please refer to [Figure 19](#). Additionally, C_{in5} is present to reduce the resonance of the input line produced by the inductance and resistance in the cables connecting the bench power supply to the evaluation board and the input capacitors.

4 Additional Component Footprints

When the tracking feature of the LMZ1050x is used, remove the soft-start capacitor C_{SS} and use a resistor divider on designators R_{trkb} and R_{trkt} . The ground and V_{trk} post have been provided for easy connection.

The LMZ1050x eval board incorporates a precision enable circuit which is pulled high by a 100 k Ω pull up resistor to V_{IN} . This allows the user to pull low on the enable pin to ground. The top enable resistor is R_{ent} and the bottom enable resistor is R_{enb} . Refer to the Design Guideline and Operating Description section of the LMZ1050x data sheet for detailed design implementation.

Select FPGAs specify input inrush currents for particular power-up sequences and others require sequencing rails to avoid start-up or latch-up problems. To prevent early turn-on of the LMZ1050x in systems with multiple power rails, precision enable and tracking are useful as the main input voltage rail rises at power-up.

5 Component Circuit Schematic

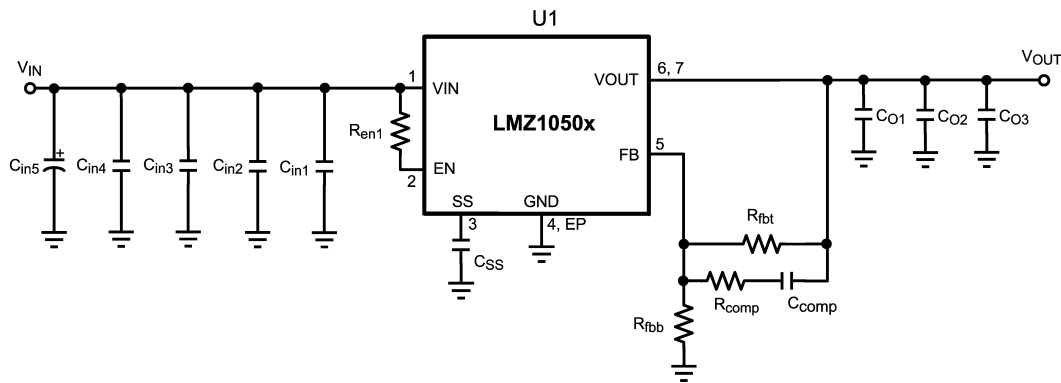


Figure 1. Component Schematic for Evaluation Board

Table 1. Bill of Materials for Evaluation Board, $V_{IN} = 3.3V$ to $5V$, $V_{OUT} = 2.5V$

Designator	Description	Case Size	Manufacturer	Manufacturer P/N	Quantity
U1	SIMPLE SWITCHER®	TO-PMOD-7	National Semiconductor	LMZ1050xTZ-ADJ	1
C_{in1}	1 μF , X7R, 16V	0805	TDK	C2012X7R1C105K	1
C_{in2} , C_{O1}	4.7 μF , X5R, 6.3V	0805	TDK	C2012X5R0J475K	2
C_{in3} , C_{O2}	22 μF , X5R, 16V	1210	TDK	C3225X5R1C226M	2
C_{in4}	47 μF , X5R, 6.3V	1210	TDK	C3225X5R0J476M	1
C_{in5}	220 μF , 10V, AL-Elec	E	Panasonic	EEE1AA221AP	1
C_{O3}	100 μF , X5R, 6.3V	1812	TDK	C4532X5R0J107M	1
R_{fbt}	75 k Ω	0805	Vishay Dale	CRCW080575K0FKEA	1
R_{fbb}	34.8 k Ω	0805	Vishay Dale	CRCW080534K8FKEA	1
R_{comp}	1.1 k Ω	0805	Vishay Dale	CRCW08051K10FKEA	1
C_{comp}	180 pF, $\pm 5\%$, C0G, 50V	0603	TDK	C1608C0G1H181J	1
R_{en1}	100 k Ω	0805	Vishay Dale	CRCW0805100KFKEA	1
C_{SS}	10 nF, $\pm 5\%$, C0G, 50V	0805	TDK	C2012C0G1H103J	1

Table 2. Output Voltage Setting ($R_{fbt} = 75$ k Ω)

V_{OUT}	R_{fbb}
3.3 V	23.7 k Ω
2.5 V	34.8 k Ω
1.8 V	59 k Ω
1.5 V	84.5 k Ω
1.2 V	150 k Ω
0.9 V	590 k Ω

6 Complete Circuit Schematic

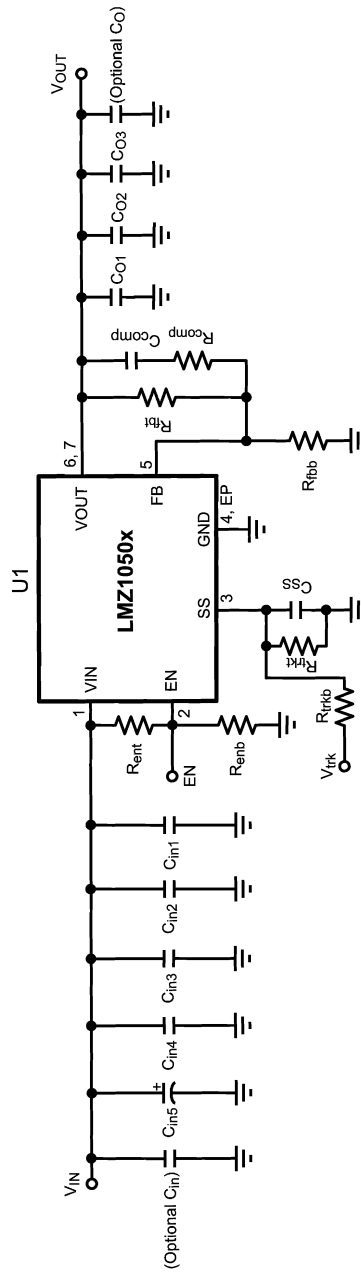


Figure 2. Complete Evaluation Board Schematic

7 Connection Diagram

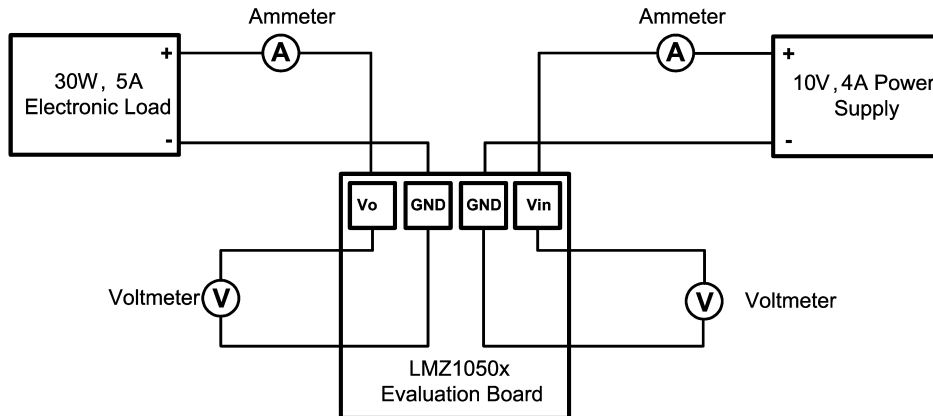


Figure 3. Efficiency Measurement Setup

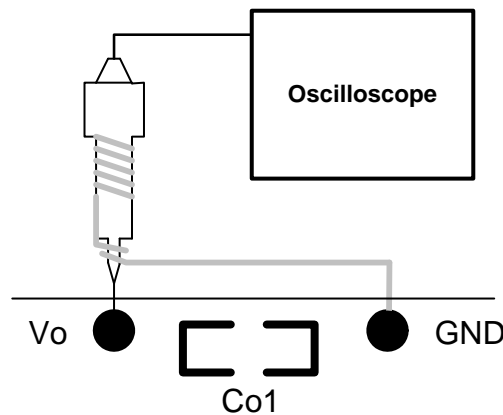


Figure 4. Output Voltage Ripple Measurement Setup

8 Performance Characteristics

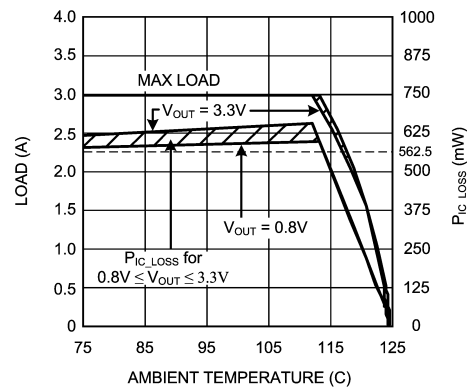


Figure 5. Current Derating vs. Ambient Temperature
LMZ10503, $V_{IN} = 5.0V$, $\theta_{JA} = 20^{\circ}C/W$

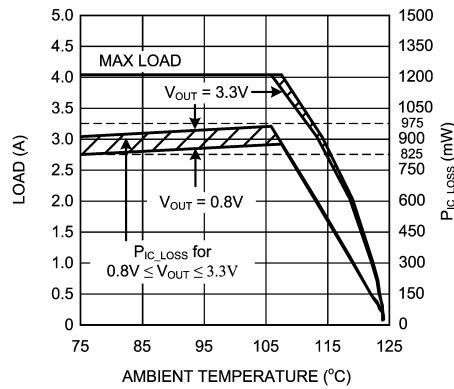


Figure 6. Current Derating vs. Ambient Temperature
LMZ10504, $V_{IN} = 5.0V$, $\theta_{JA} = 20^{\circ}C/W$

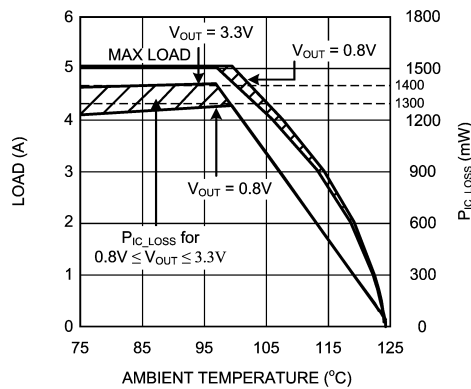


Figure 7. Current Derating vs. Ambient Temperature
LMZ10505, $V_{IN} = 5.0V$, $\theta_{JA} = 20^{\circ}C/W$

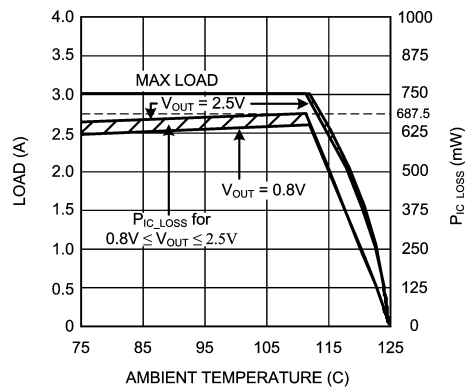


Figure 8. Current Derating vs. Ambient Temperature
LMZ10503, $V_{IN} = 3.3V$, $\theta_{JA} = 20^{\circ}C/W$

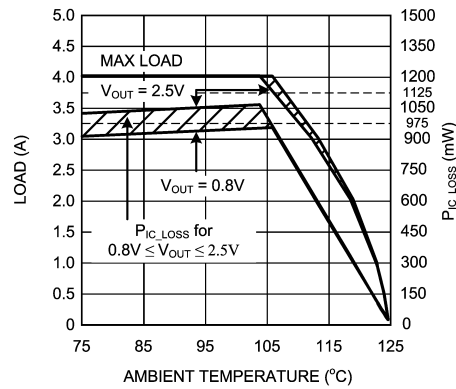


Figure 9. Current Derating vs. Ambient Temperature
LMZ10504, $V_{IN} = 3.3V$, $\theta_{JA} = 20^{\circ}C/W$

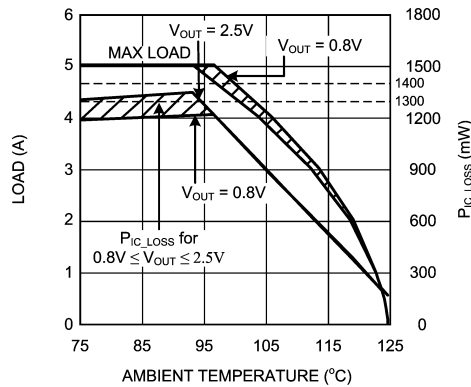


Figure 10. Current Derating vs. Ambient Temperature
LMZ10505, $V_{IN} = 3.3V$, $\theta_{JA} = 20^{\circ}C/W$

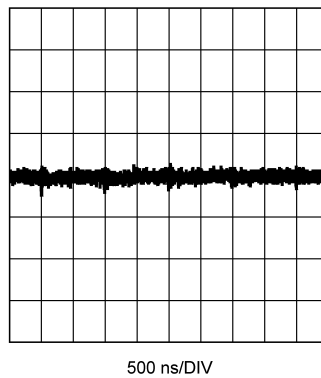


Figure 11. Output Voltage Ripple
 $V_{IN} = 5V$, $V_{OUT} = 2.5V$, $I_{OUT} = 3A, 4A, \& 5A$
LMZ10503 / LMZ10504 / LMZ10505

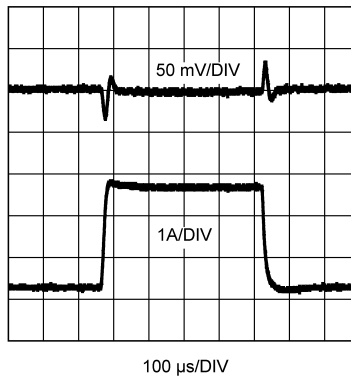


Figure 12. Load Transient Response
 $V_{IN} = 5.0V$, $V_{OUT} = 2.5V$
 LMZ10503, $I_{OUT} = 400\text{ mA to }2.7A$, 20 MHz Bandwidth Limit

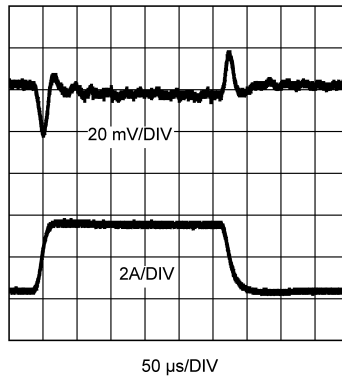


Figure 13. Load Transient Response
 $V_{IN} = 5V$, $V_{OUT} = 2.5V$
 LMZ10504, $I_{OUT} = 400\text{ mA to }3.6A$, 20 MHz Bandwidth Limit

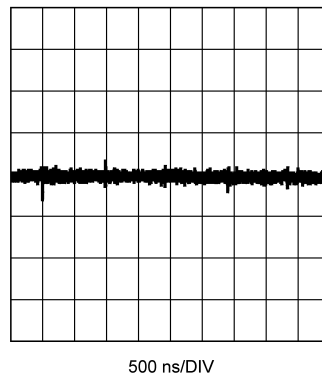


Figure 14. Output Voltage Ripple
 $V_{IN} = 3.3V$, $V_{OUT} = 2.5V$, $I_{OUT} = 3A, 4A, \text{ \& } 5A$
 LMZ10503 / LMZ10504 / LMZ10505

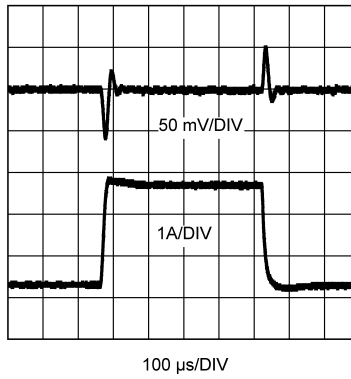


Figure 15. Load Transient Response
 $V_{IN} = 3.3V$, $V_{OUT} = 2.5V$
 LMZ10503, $I_{OUT} = 300\text{ mA}$ to $2.7A$, 20 MHz Bandwidth Limit

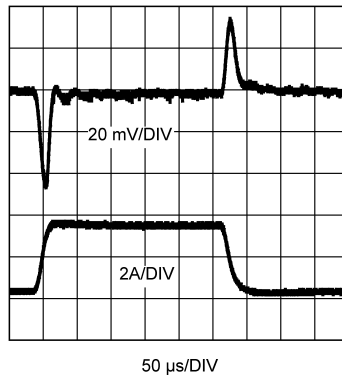


Figure 16. Load Transient Response
 $V_{IN} = 3.3V$, $V_{OUT} = 2.5V$
 LMZ10504, $I_{OUT} = 400\text{ mA}$ to $3.6A$, 20 MHz Bandwidth Limit

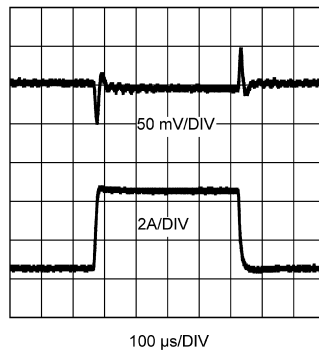


Figure 17. Load Transient Response
 $V_{IN} = 5.0V$, $V_{OUT} = 2.5V$
 LMZ10505, $I_{OUT} = 500\text{ mA}$ to $4.5A$, 20 MHz Bandwidth Limit

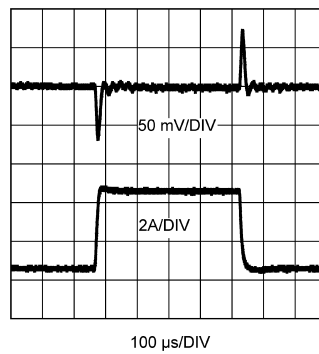


Figure 18. Load Transient Response
 $V_{IN} = 3.3V$, $V_{OUT} = 2.5V$
 LMZ10505, $I_{OUT} = 500\text{ mA}$ to $4.5A$, 20 MHz Bandwidth Limit

9 Circuit Example: Complies with EN55022 Class B Radiated Emissions

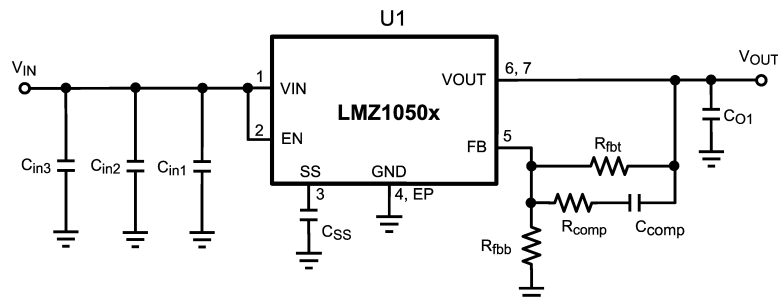


Figure 19. Component Schematic, $V_{IN} = 5V$, $V_{OUT} = 2.5V$, Complies with EN55022 Class B Radiated Emissions

Table 3. Bill of Materials

Designator	Description	Case Size	Manufacturer	Manufacturer P/N	Quantity
U1	SIMPLE SWITCHER®	TO-PMOD-7	National Semiconductor	LMZ10503/4/05TZ-ADJ	1
C_{in1}	1 μF , X7R, 16V	0805	TDK	C2012X7R1C105K	1
C_{in2}	4.7 μF , X5R, 6.3V	0805	TDK	C2012X5R0J475K	1
C_{in3}	47 μF , X5R, 6.3V	1210	TDK	C3225X5R0J476M	1
C_{O1}	100 μF , X5R, 6.3V	1812	TDK	C4532X5R0J107M	1
R_{fbt}	75 k Ω	0805	Vishay Dale	CRCW080575K0FKEA	1
R_{fbb}	34.8 k Ω	0805	Vishay Dale	CRCW080534K8FKEA	1
R_{comp}	1.1 k Ω	0805	Vishay Dale	CRCW08051K10FKEA	1
C_{comp}	180 pF, $\pm 5\%$, C0G, 50V	0603	TDK	C1608C0G1H181J	1
C_{SS}	10 nF, $\pm 5\%$, C0G, 50V	0805	TDK	C2012C0G1H103J	1

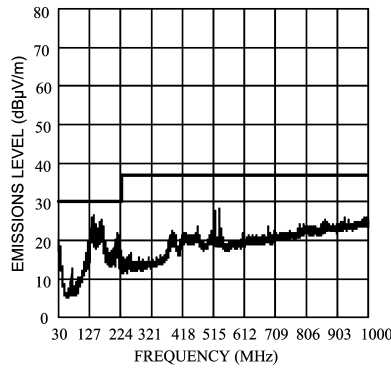


Figure 20. Radiated Emissions (EN55022, Class B)
 $V_{IN} = 5V, V_{OUT} = 2.5V, I_{OUT} = 3A$
 Tested on LMZ10503 Evaluation Board

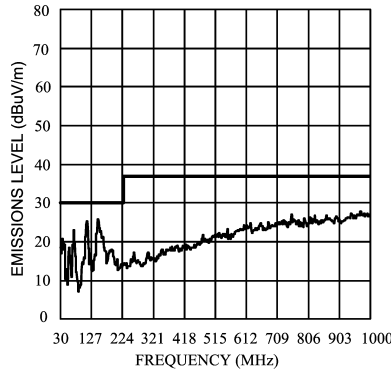


Figure 21. Radiated Emissions (EN55022, Class B)
 $V_{IN} = 5V, V_{OUT} = 2.5V, I_{OUT} = 4A$
 Tested on LMZ10504 Evaluation Board

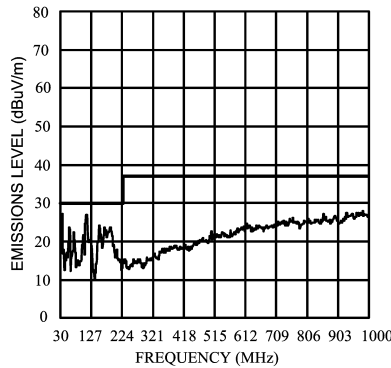


Figure 22. Radiated Emissions (EN55022, Class B)
 $V_{IN} = 5V, V_{OUT} = 2.5V, I_{OUT} = 5A$
 Tested on LMZ10505 Evaluation Board

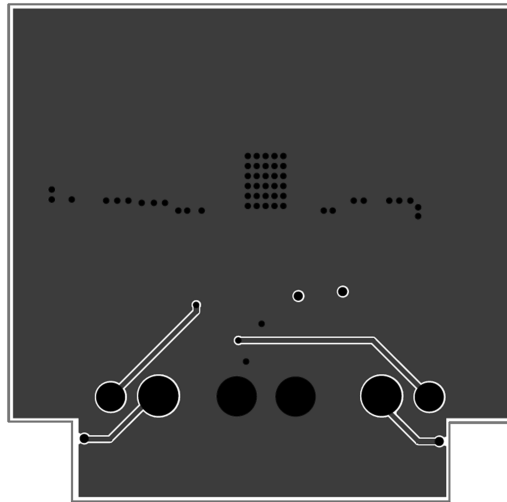


Figure 25. Internal Layer II (Ground)

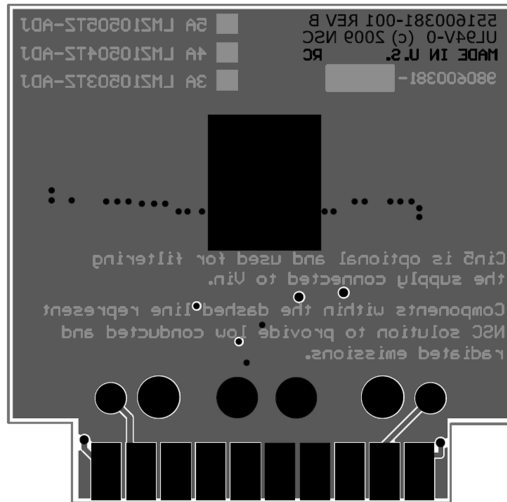


Figure 26. Bottom Layer

IMPORTANT NOTICE

Texas Instruments Incorporated and its subsidiaries (TI) reserve the right to make corrections, enhancements, improvements and other changes to its semiconductor products and services per JESD46, latest issue, and to discontinue any product or service per JESD48, latest issue. Buyers should obtain the latest relevant information before placing orders and should verify that such information is current and complete. All semiconductor products (also referred to herein as "components") are sold subject to TI's terms and conditions of sale supplied at the time of order acknowledgment.

TI warrants performance of its components to the specifications applicable at the time of sale, in accordance with the warranty in TI's terms and conditions of sale of semiconductor products. Testing and other quality control techniques are used to the extent TI deems necessary to support this warranty. Except where mandated by applicable law, testing of all parameters of each component is not necessarily performed.

TI assumes no liability for applications assistance or the design of Buyers' products. Buyers are responsible for their products and applications using TI components. To minimize the risks associated with Buyers' products and applications, Buyers should provide adequate design and operating safeguards.

TI does not warrant or represent that any license, either express or implied, is granted under any patent right, copyright, mask work right, or other intellectual property right relating to any combination, machine, or process in which TI components or services are used. Information published by TI regarding third-party products or services does not constitute a license to use such products or services or a warranty or endorsement thereof. Use of such information may require a license from a third party under the patents or other intellectual property of the third party, or a license from TI under the patents or other intellectual property of TI.

Reproduction of significant portions of TI information in TI data books or data sheets is permissible only if reproduction is without alteration and is accompanied by all associated warranties, conditions, limitations, and notices. TI is not responsible or liable for such altered documentation. Information of third parties may be subject to additional restrictions.

Resale of TI components or services with statements different from or beyond the parameters stated by TI for that component or service voids all express and any implied warranties for the associated TI component or service and is an unfair and deceptive business practice. TI is not responsible or liable for any such statements.

Buyer acknowledges and agrees that it is solely responsible for compliance with all legal, regulatory and safety-related requirements concerning its products, and any use of TI components in its applications, notwithstanding any applications-related information or support that may be provided by TI. Buyer represents and agrees that it has all the necessary expertise to create and implement safeguards which anticipate dangerous consequences of failures, monitor failures and their consequences, lessen the likelihood of failures that might cause harm and take appropriate remedial actions. Buyer will fully indemnify TI and its representatives against any damages arising out of the use of any TI components in safety-critical applications.

In some cases, TI components may be promoted specifically to facilitate safety-related applications. With such components, TI's goal is to help enable customers to design and create their own end-product solutions that meet applicable functional safety standards and requirements. Nonetheless, such components are subject to these terms.

No TI components are authorized for use in FDA Class III (or similar life-critical medical equipment) unless authorized officers of the parties have executed a special agreement specifically governing such use.

Only those TI components which TI has specifically designated as military grade or "enhanced plastic" are designed and intended for use in military/aerospace applications or environments. Buyer acknowledges and agrees that any military or aerospace use of TI components which have **not** been so designated is solely at the Buyer's risk, and that Buyer is solely responsible for compliance with all legal and regulatory requirements in connection with such use.

TI has specifically designated certain components which meet ISO/TS16949 requirements, mainly for automotive use. Components which have not been so designated are neither designed nor intended for automotive use; and TI will not be responsible for any failure of such components to meet such requirements.

Products

Audio	www.ti.com/audio
Amplifiers	amplifier.ti.com
Data Converters	dataconverter.ti.com
DLP® Products	www.dlp.com
DSP	dsp.ti.com
Clocks and Timers	www.ti.com/clocks
Interface	interface.ti.com
Logic	logic.ti.com
Power Mgmt	power.ti.com
Microcontrollers	microcontroller.ti.com
RFID	www.ti-rfid.com
OMAP Applications Processors	www.ti.com/omap
Wireless Connectivity	www.ti.com/wirelessconnectivity

Applications

Automotive and Transportation	www.ti.com/automotive
Communications and Telecom	www.ti.com/communications
Computers and Peripherals	www.ti.com/computers
Consumer Electronics	www.ti.com/consumer-apps
Energy and Lighting	www.ti.com/energy
Industrial	www.ti.com/industrial
Medical	www.ti.com/medical
Security	www.ti.com/security
Space, Avionics and Defense	www.ti.com/space-avionics-defense
Video and Imaging	www.ti.com/video

TI E2E Community

e2e.ti.com