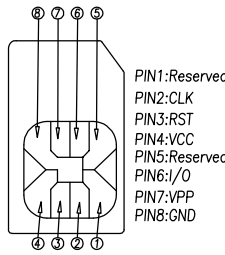
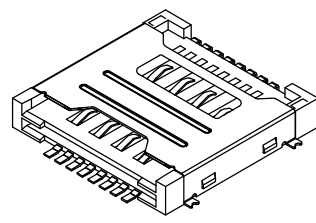
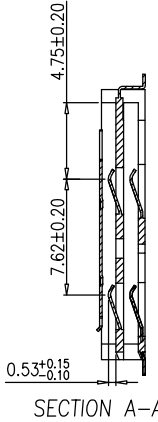
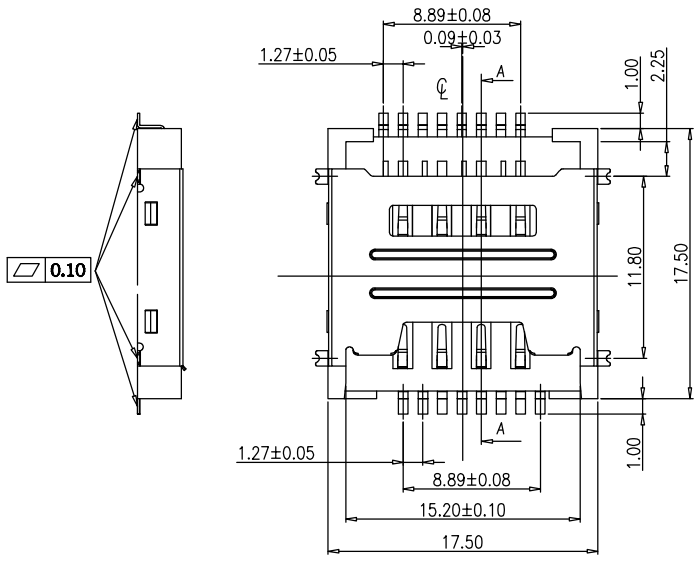


1 2 3 4 5 6 7 8

F
E
D
C
B
A

REV	MODIFICATION	DATE	DRAW
C	EN-11-1009	2011/10/07	Chris
D	EN-12-0726	2012/07/25	Chris
E	EN-12-1105	2012/11/06	Stacy



PIN1:Reserved
 PIN2:CLK
 PIN3:RST
 PIN4:VCC
 PIN5:Reserved
 PIN6:I/O
 PIN7:VPP
 PIN8:GND

NOTE:

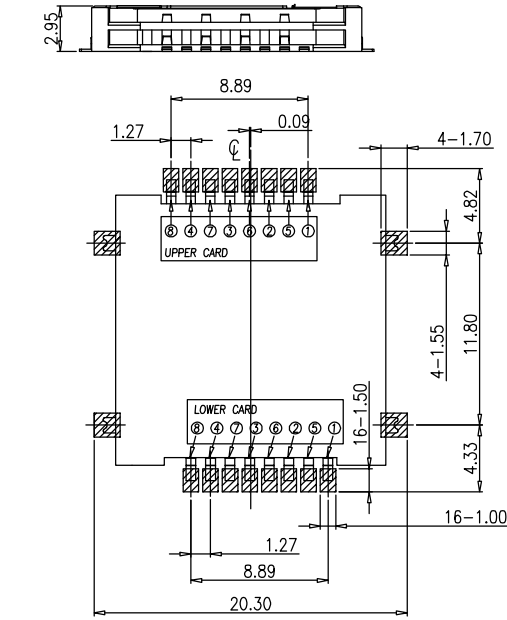
- MATERIAL:
 - A. HOUSING: LCP, UL 94-V0 COLOR: BLACK.
 - B. CONTACT: PHOSPHOR BRONZE t=0.15.
 - C. SHELL: STAINLESS STEEL t=0.15.
- 2.PLATING: Underplate: 50u" Nickel OVER ALL.
- 3.Electrical characteristics:
 - A. Operating voltage: 250V(AC/DC).
 - B. Current rating : 0.5 MAX.
 - C. Operating temperature: -25°C ~ +85°C.
 - D. Insulation resistance: 1000M ohme min. at 250VDC.
 - E. Dielectric withstanding voltage: 500 VAC/1minute.
 - F. Contact resistance: 100m ohme max.

Ordering Information:

SIMMP-208 XX BTO X

Contact Area Plating: _____
 01-Gold Flash.
 03-03u" Gold Plating.
 05-05u" Gold Plating.
 10-10u" Gold Plating.

Package Type:
 0 : Tray
 1 : Tape Reel



RECOMMENDED PCB LAYUOT
 (all tolerance are±0.05)

DIMENSION IN mm [Inch]	PROD. SPEC.	KINGFONT PRECISION INDUSTRIAL CO., LTD.	
TOLERANCE UNLESS OTHERWISE SPECIFIED	PKG. SPEC.	TITLE	CUSTOMER DRAWING
.X± 0.25 X.*± 2"	APPROVE	2 IN 1 16PIN SIM CARD H=2.9mm	
.XX± 0.15 .X.*± 1"	CHECK	FILE NO.	DWG NO. SIMMP-208XXBTOX
.XXX± 0.10 .XX*±	DRAW	SIZE A4	PROJ. SHEET 1 / 1
		SCALE 2:1	REV E