

# Superbright LED Retrofit Lamp Dimmable



## Features:

- 4W LED lamp designed as high quality replacement of 20W halogen GU10 lamps
- Dimmable 20-100%
- 25,000 hours rated life
- Suitable for indoor environments
- Available in 2,700K and 3,000K CCT with 80CRI
- Power factor >0.95
- Reduces energy consumption up to 80%
- Lasts 33 times longer than halogen lamps
- Mercury free
- UV and IR free
- UL File No. : E356190

## Specifications

Lamp Base Type	: GU10
Power Rating	: 4W
Bulb Size	: 50mm
Supply Voltage	: 120V
Average Bulb Life	: 25,000h
Power Factor	: 0.95

## Application Information

### Where does it used

- Art galleries and Museums
- Hospitality
- Residential
- Shopping Mall

### Applications

- Accent / Display Lighting
- Recessed Downlighting
- Showing Lighting
- Landscape Lighting

### Notes

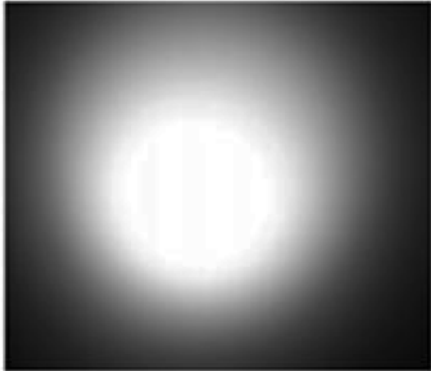
- Operating temperature range between -20°C and +50°C
- Suitable for dimmers or in luminaires controlled by a dimmer
- Not intended for use with emergency light fixtures
- Not for use where exposed to weather
- Not for use in totally enclosed and insulated fixtures

# Superbright LED Retrofit Lamp

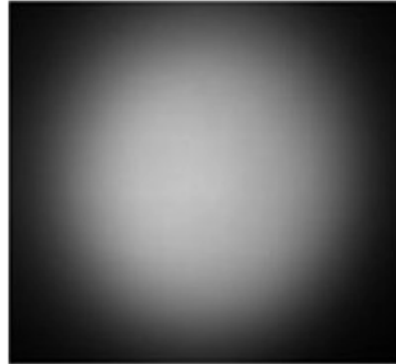
## Dimmable



### Light Spot



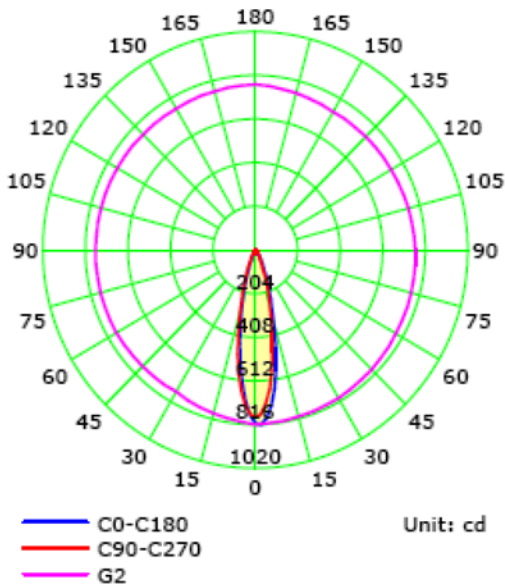
Beam angle : 25°



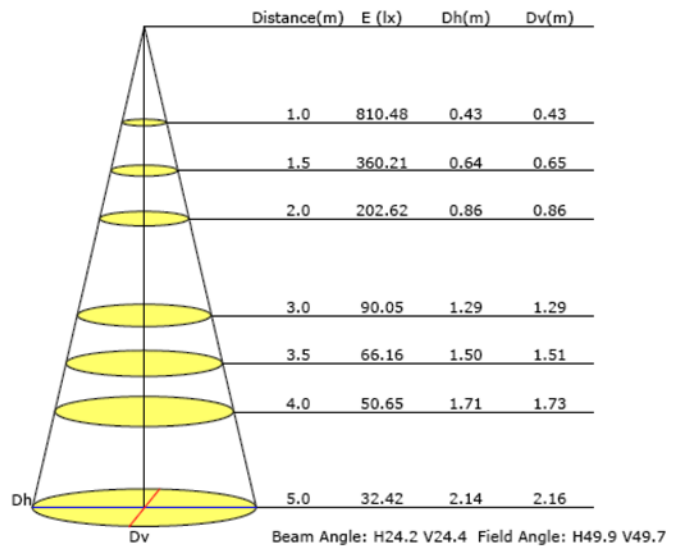
Beam angle : 40°

### Illumination Intensity Chart ( CREE Xlamp XP-E )

Luminous Intensity Distribution Curve



Illuminance at a Distance



All data above are based on WW, 25°

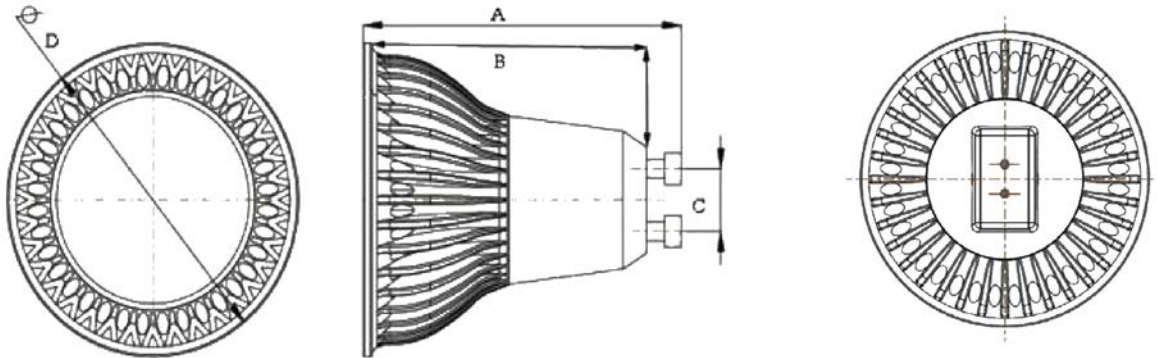


# Superbright LED Retrofit Lamp

## Dimmable



### Dimension



A (mm)	B (mm)	C (mm)	D (mm)	Weight (g)
55	50	10	50	60

### Part Number Table

Description	LED Colour	CCT	Beam Angle	Typical Lumens (lm)	CRI	Part Number
LED Lamp, GU10, 120V	Warm White	3,000K	25°	230	80	MR16-LEDGU10120V4W25-3000DIM
	Cool White	6,000K		270	70	MR16-LEDGU10120V4W25-6000DIM
	Warm White	3,000K	40°	230	80	MR16-LEDGU10120V4W40-3000DIM
	Cool White	6,000K		270	70	MR16-LEDGU10120V4W40-6000DIM

**Important Notice :** This data sheet and its contents (the "Information") belong to the members of the Premier Farnell group of companies (the "Group") or are licensed to it. No licence is granted for the use of it other than for information purposes in connection with the products to which it relates. No licence of any intellectual property rights is granted. The Information is subject to change without notice and replaces all data sheets previously supplied. The Information supplied is believed to be accurate but the Group assumes no responsibility for its accuracy or completeness, any error in or omission from it or for any use made of it. Users of this data sheet should check for themselves the Information and the suitability of the products for their purpose and not make any assumptions based on information included or omitted. Liability for loss or damage resulting from any reliance on the Information or use of it (including liability resulting from negligence or where the Group was aware of the possibility of such loss or damage arising) is excluded. This will not operate to limit or restrict the Group's liability for death or personal injury resulting from its negligence. Multicomp is the registered trademark of the Group. © Premier Farnell plc 2012.

