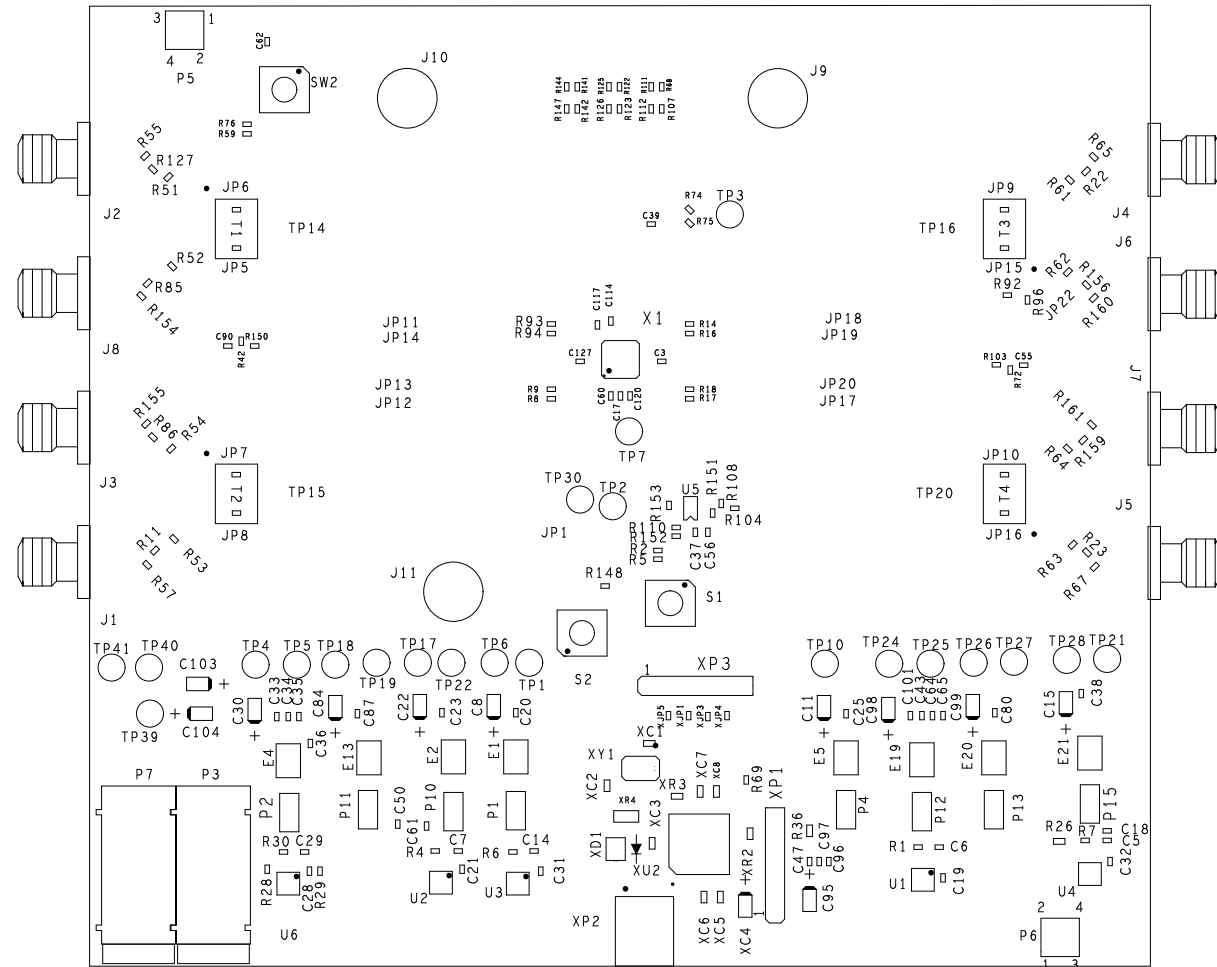
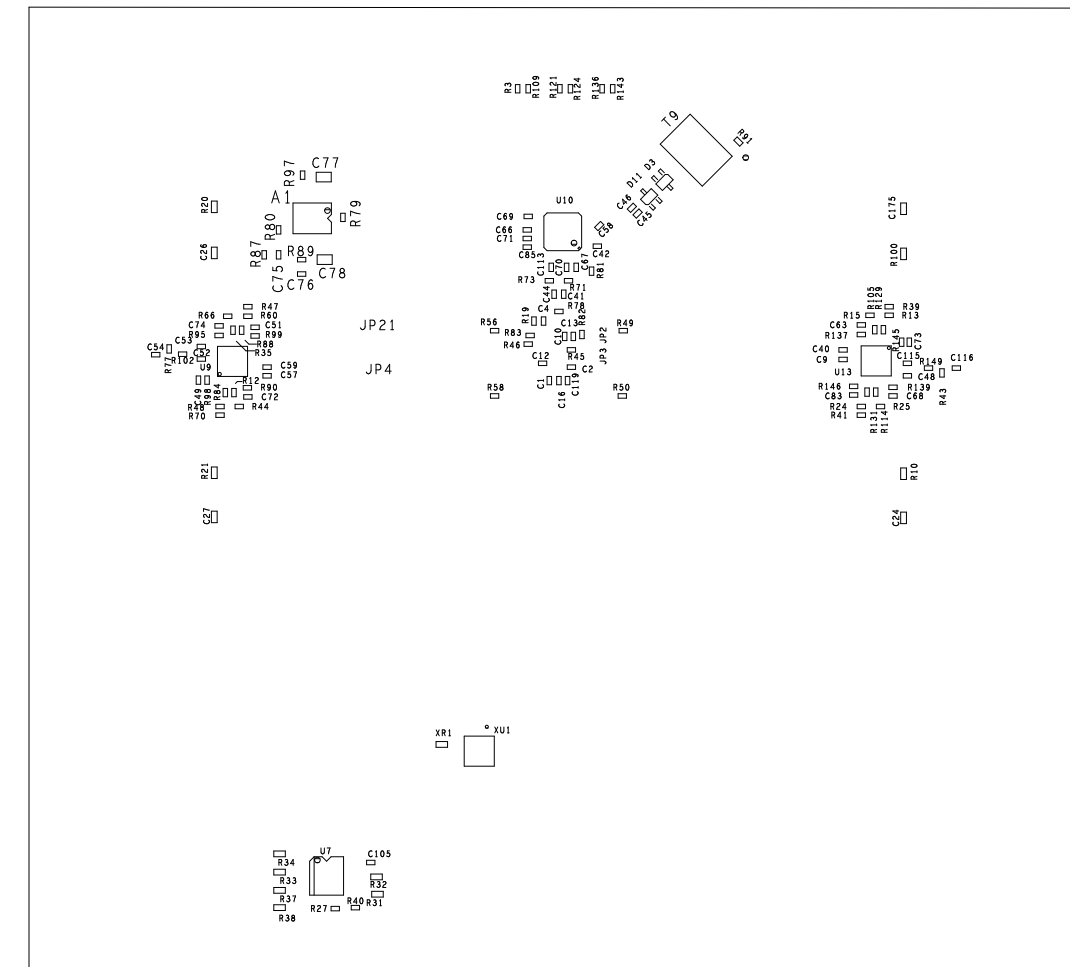



REVISIONS			
REV	DESCRIPTION	DATE	APPROVED
A	INITIAL RELEASE	22MAR10	L.M.
B	REMOVED SOCKET	07NOV10	L.M.
C	PIN CHANGES ON PART	23FEB11	L.M.



PRIMARY SIDE



SECONDARY SIDE

UNLESS OTHERWISE SPECIFIED DIMENSIONS ARE IN INCHES TOLERANCES DECIMALS FRACTIONS ANGLES .XX ±.010 ±.1/32 ±.2 .XXX ±.005	ASSEMBLY		 HSC DIVISION 831 WOBURN STREET WILMINGTON, MA 01887	
	APPROVAL	DATE	TITLE	
MATERIAL	DRAWN BY P.M.A.	22MAR10	AD9106 EVAL BOARD	
FINISH	DESIGNED	CHECKED	APPROVED	DATE
DO NOT SCALE DWG	MFG ENGINEER		SIZE C	FSCM NO DRAWING NUMBER HSC 09040
			SCALE 1/1	REV C
				SHEET 1 OF 1

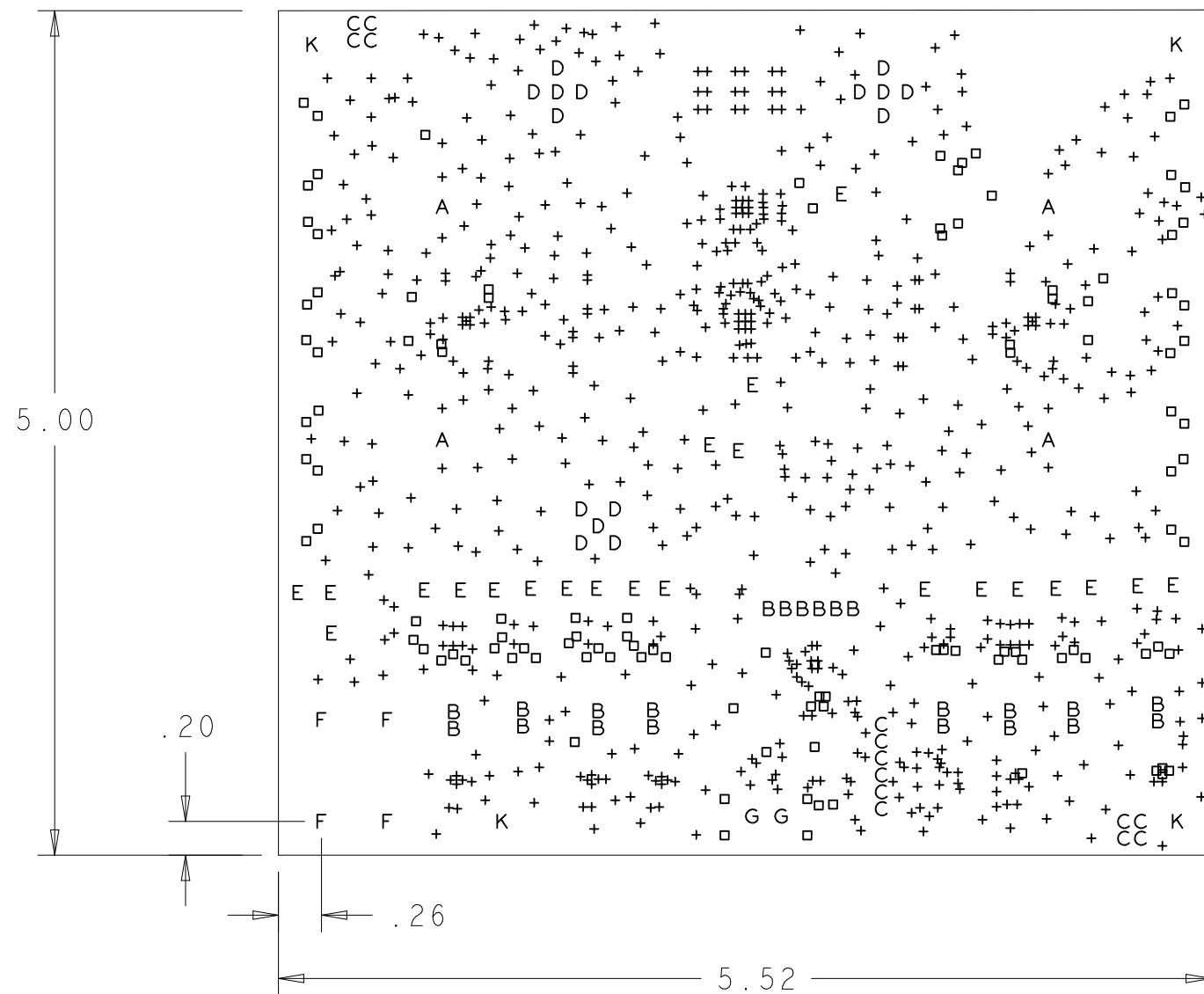
REVISIONS			
REV	DESCRIPTION	DATE	APPROVED
A	INITIAL RELEASE	22MAR10	L.M.
B	REMOVED SOCKET	07NOV10	L.M.
C	PIN CHANGES ON PART	23FEB11	L.M.

NOTES:

- ACCEPTABILITY; PER ANALOG DEVICES, INC. SPECIFICATION TST00115 LATEST REVISION.
- MATERIALS; FR-4, IN ACCORDANCE WITH IPC-L-130 (LATEST REV.). GLASS FABRIC BASE, EPOXY RESIN, FIRE RESISTANT.
- BONDING AGENT; PREIMPREGNATED B STAGE EPOXY GLASS CLOTH IN ACCORDANCE WITH IPC-L-109 (LATEST REV.).
- CLADDING; EXTERNAL LAYERS 1/2 OZ. COPPER, OVERPLATE TO 1 1/2 OZ. INTERNAL SIGNAL LAYERS 1 OZ. COPPER.
- SOLDER MASK; SHALL BE BLUE LIQUID PHOTOIMAGABLE (LPI) APPLIED ON BOTH SIDES OVER BARE COPPER AND SHALL MEET IPC-SM-840 (LATEST REV.) CLASS 3.
- SILK SCREEN; SHALL BE PERMANENT NON-CONDUCTIVE EPOXY INK, COLOR WHITE.
- U.L. RATING; 94VO MINIMUM.

FABRICATION:

1. REFER TO IPC-6010 SERIES (LATEST REV.), CLASS 2 FOR FABRICATION UNLESS OTHERWISE SPECIFIED.
2. UNDIMENSIONED HOLES TO BE LOCATED WITHIN +/- .005 OF THEIR TRUE POSITION WITH RESPECT TO ARTWORK.
3. PLATED HOLE WALL THICKNESS SHALL NOT BE LESS THAN .001 INCH MINIMUM AVERAGE, WITH NO READING LESS THAN .0008 BY CROSS SECTION.
4. HOLE DIAMETERS APPLY AFTER PLATING.
5. FINISHED CONDUCTOR WIDTHS SHALL NOT BE REDUCED FROM THE NOMINAL, INDICATED ON THE MASTER PATTERN, BY MORE THAN THE CONDUCTOR THICKNESS.
6. MINIMUM DESIGN LINE WIDTH IS .005 INCH.
7. MINIMUM DESIGN SPACING IS .005 INCH.
8. BOARD/PANEL MUST MEET IPC-A-600 (LATEST REV.) CLASS 2 FOR FLATNESS.
9. MFR. TO LEGIBLY ETCH OR STAMP/SCREEN WITH PERMANENT NON-CONDUCTIVE INK ON SECONDARY SIDE IN A CLEAR AREA UNLESS OTHERWISE INDICATED;
  - A. U.L. CODE
  - B. DATE CODE (STAMP)
  - C. FLAMMABILITY RATING
  - D. MFR. LOGO - DESIGNATED AREA.
  - E. SUCCESSFUL ELECTRICAL BOARD TEST.
  - F. LOT NUMBER - DESIGNATED AREA.
10. NON-FUNCTIONAL PADS MAY BE REMOVED FROM INNER SIGNAL LAYERS AT MFR. DISCRETION.
11. IF PAD SIZES PROVIDED ARE NOT LARGE ENOUGH TO MAINTAIN ANNULAR RING REQUIREMENT, MFR. MAY TEAR DROP PADS TO MAINTAIN ANNULAR RING AT PAD TO CIRCUIT INTERFACE ONLY AND MUST INSURE ELECTRICAL INTEGRITY. REPAIRS PER IPC-R-700 ARE ALLOWED.
12. MODIFICATIONS TO THE ARTWORK, OTHER THAN THOSE DESCRIBED ON THE FABRICATION DRAWING, ARE NOT ALLOWED WITHOUT WRITTEN AUTHORIZATION.
13. FINISH: SURFACES SHALL HAVE ENIG FINISH PLATED WITH 2-6 MICROINCHES OF IMMERSION GOLD OVER 100-200 MICROINCHES OF ELECTROLESS NICKEL.

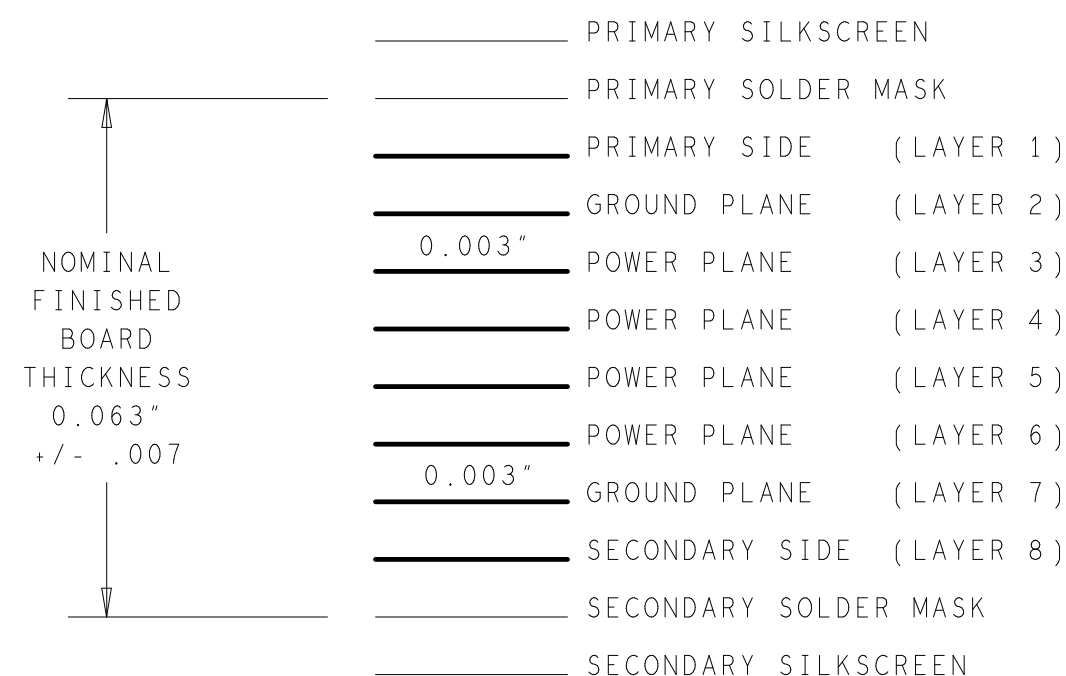


PRIMARY SIDE

HOLE TOLERANCE

UNLESS SPECIFIED  
 PLATED: +/- .003  
 NON PLATED: +/- .001

8 LAYER STACKUP

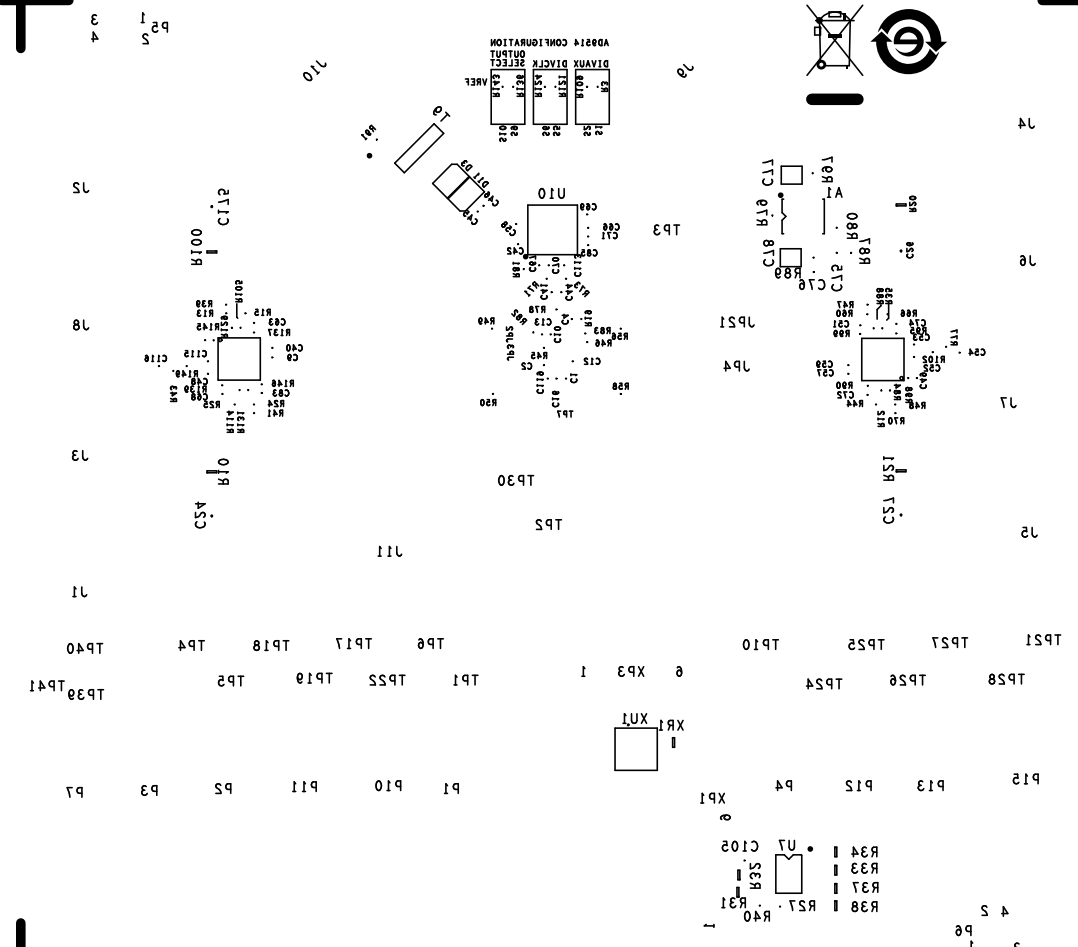
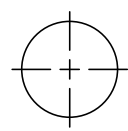
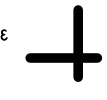
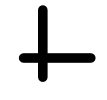
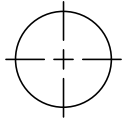
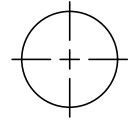


CHARACTERISTIC IMPEDANCE = 50 OHMS +/- 10%  
 ARTWORK LINE WIDTH FOR IMPEDANCE CONTROLLED LINES = 0.008 L1 & L8  
 DIFFERENTIAL IMPEDANCE = 100 OHMS +/- 10%  
 ARTWORK LINE WIDTH FOR IMPEDANCE CONTROLLED LINES = 0.005 L1 & L8

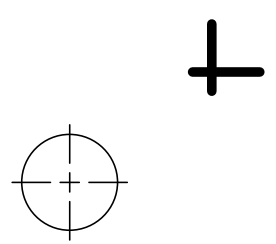
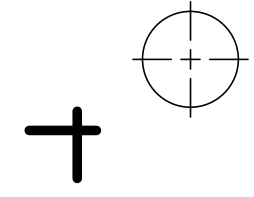
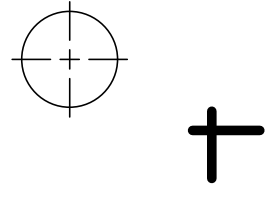
FINISHED HOLES IN MILS				
ALL UNITS ARE IN MILS				
FIGURE	SIZE	PLATED	QTY	TOLERANCE/NOTES
+	10.0	PLATED	709	
□	16.0	PLATED	114	
A	30.0	PLATED	4	
B	40.0	PLATED	22	
C	45.0	PLATED	14	
D	60.0	PLATED	15	
E	63.0	PLATED	22	
F	75.0	PLATED	4	
G	40.0	NON-PLATED	2	
K	155.0	NON-PLATED	4	

UNLESS OTHERWISE SPECIFIED DIMENSIONS ARE IN INCHES TOLERANCES DECIMALS FRACTIONS ANGLES .XX +/- .010 --1/32 +/- 2 .XXX +/- .005	NCDRILL		ANALOG DEVICES		HSC DIVISION 831 WOBURN STREET WILMINGTON, MA 01887	
	APPROVAL	DATE	TITLE			
MATERIAL	DRAWN BY P.M.A.	22MAR10	AD9106 EVAL BOARD			
FINISH	CHECKED		SIZE C	FSCM NO	DRAWING NUMBER HSC 09040	REV C
	APPROVED		SCALE 1/1	SHEET 1 OF 1		
DO NOT SCALE DWG						

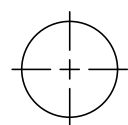
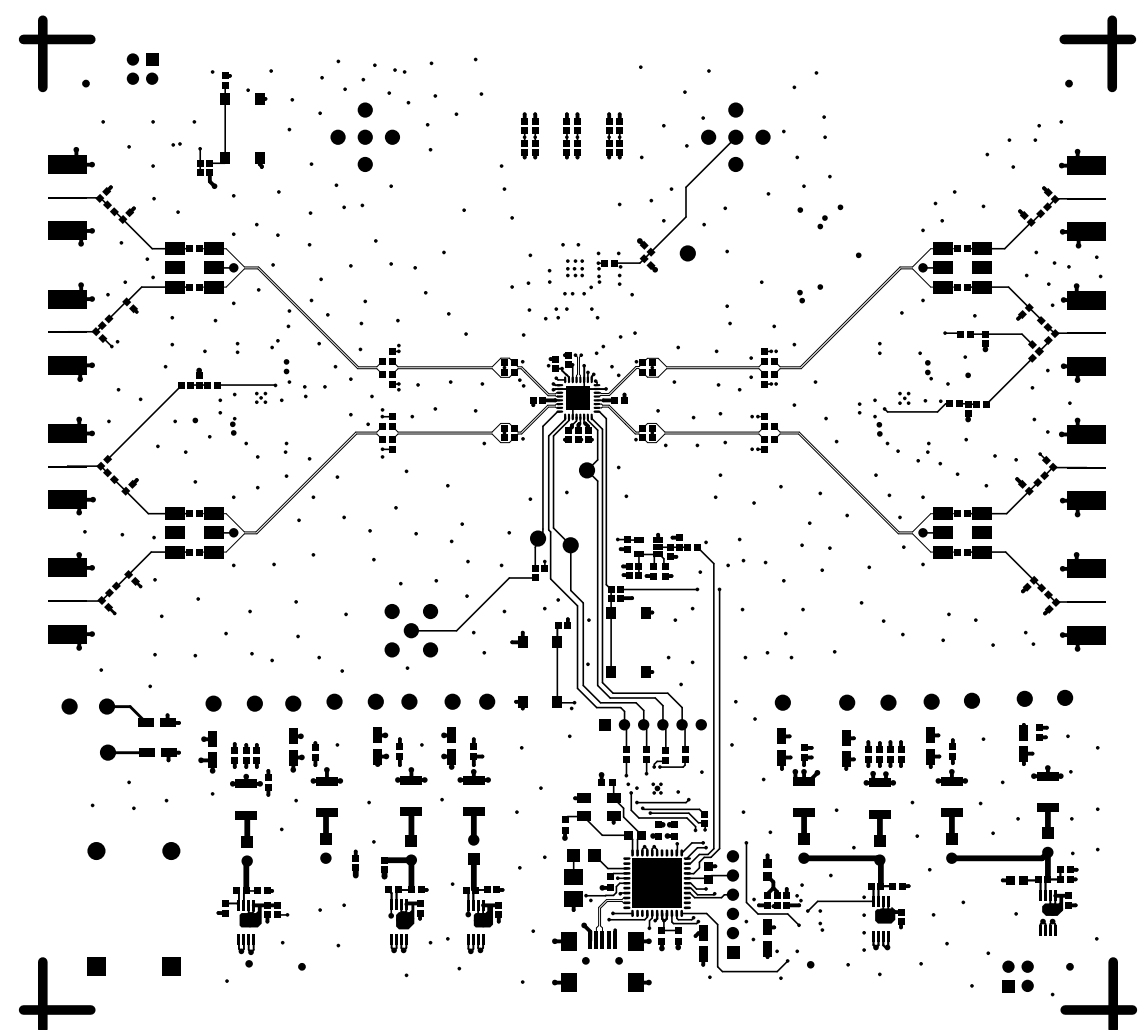
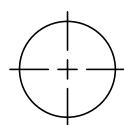
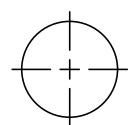
SILKSCREEN SECONDARY  
HSC 09040  
REV C



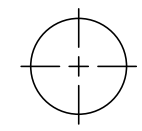
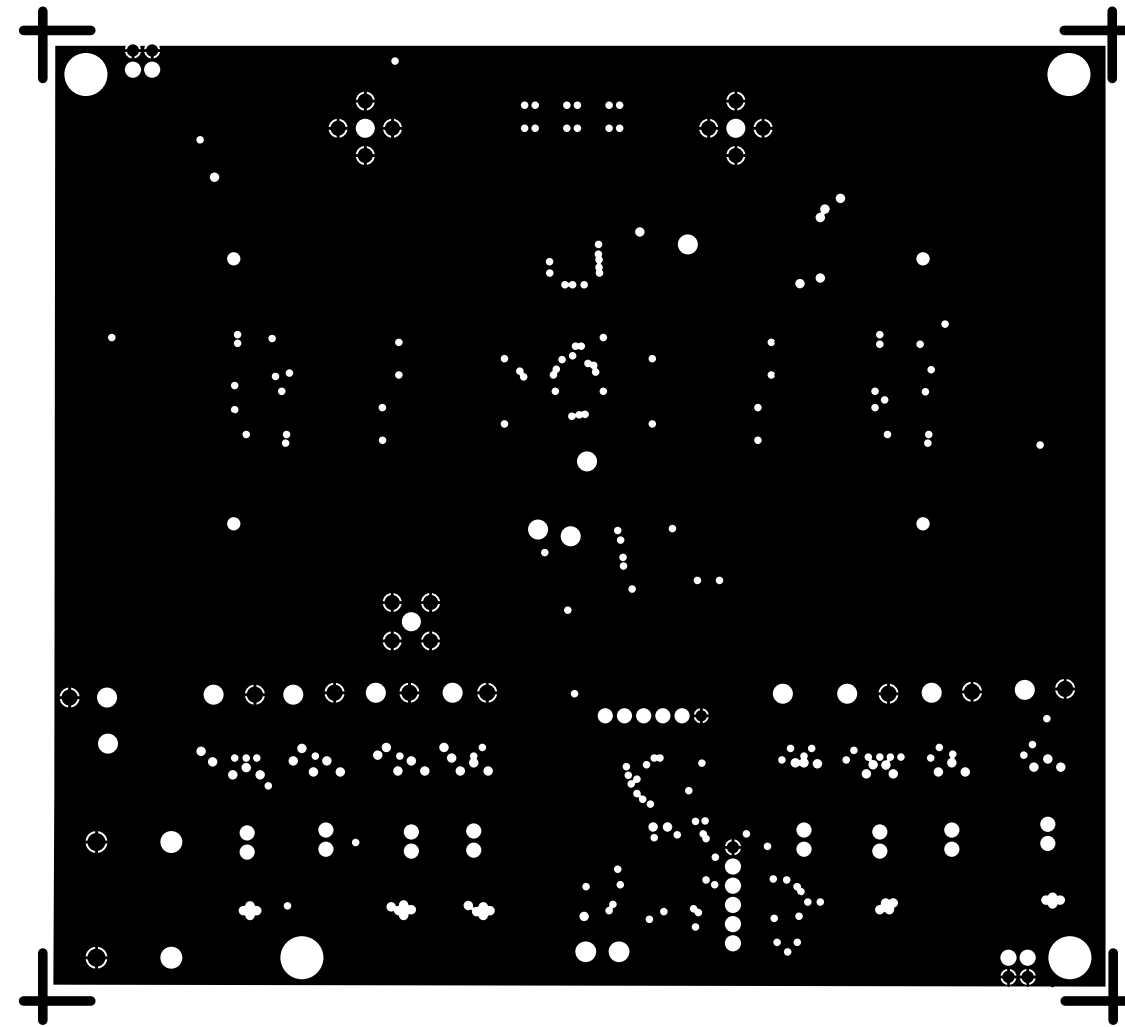
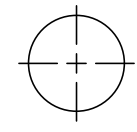
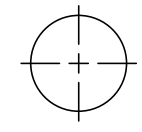
GOLDMASK PRIMARY  
HSC 09040  
REV C



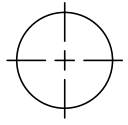
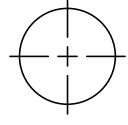
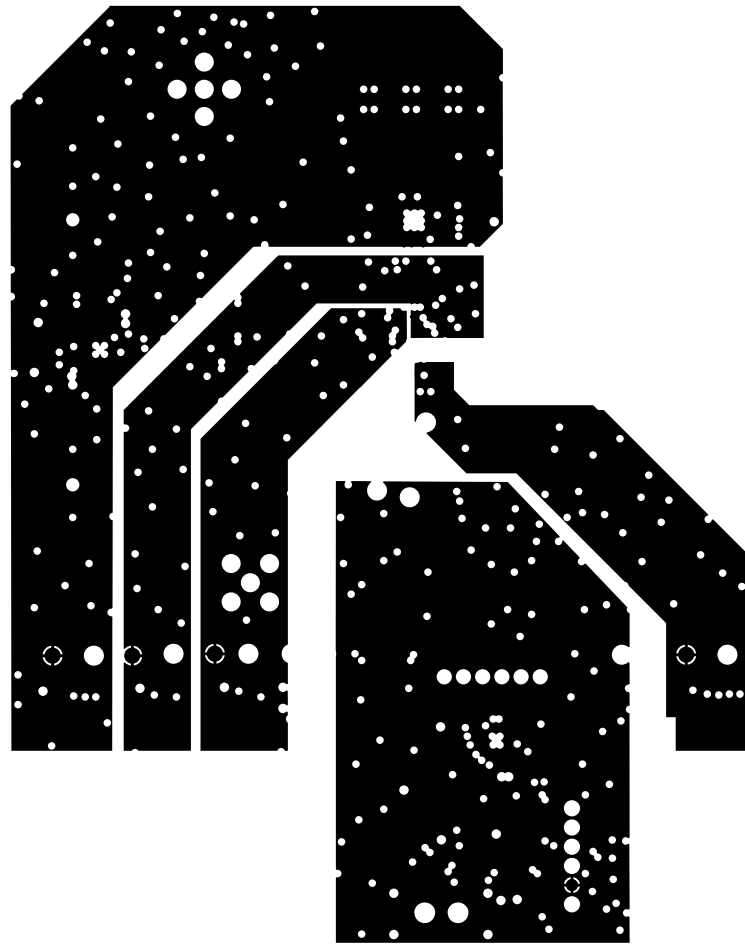
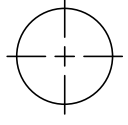
L1 PRIMARY  
HSC 09040  
REV C



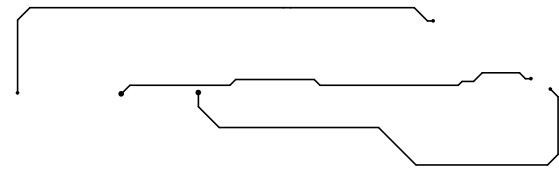
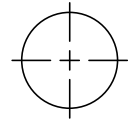
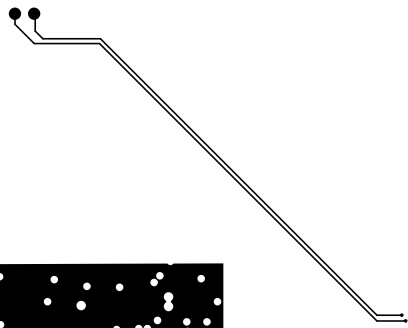
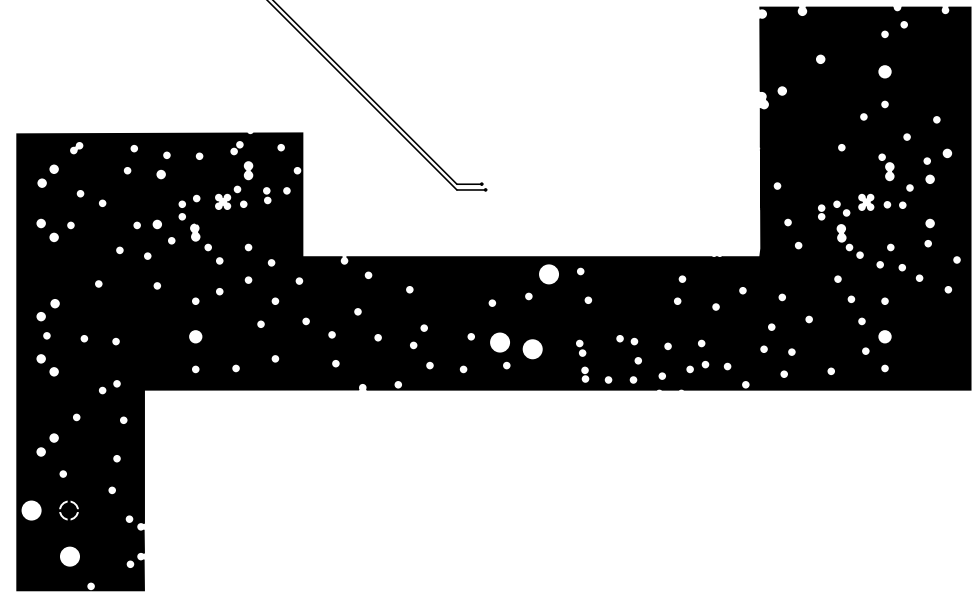
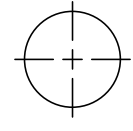
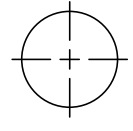
L2 GROUND  
HSC 09040  
REV C



L3 POWER  
HSC 09040  
REV C

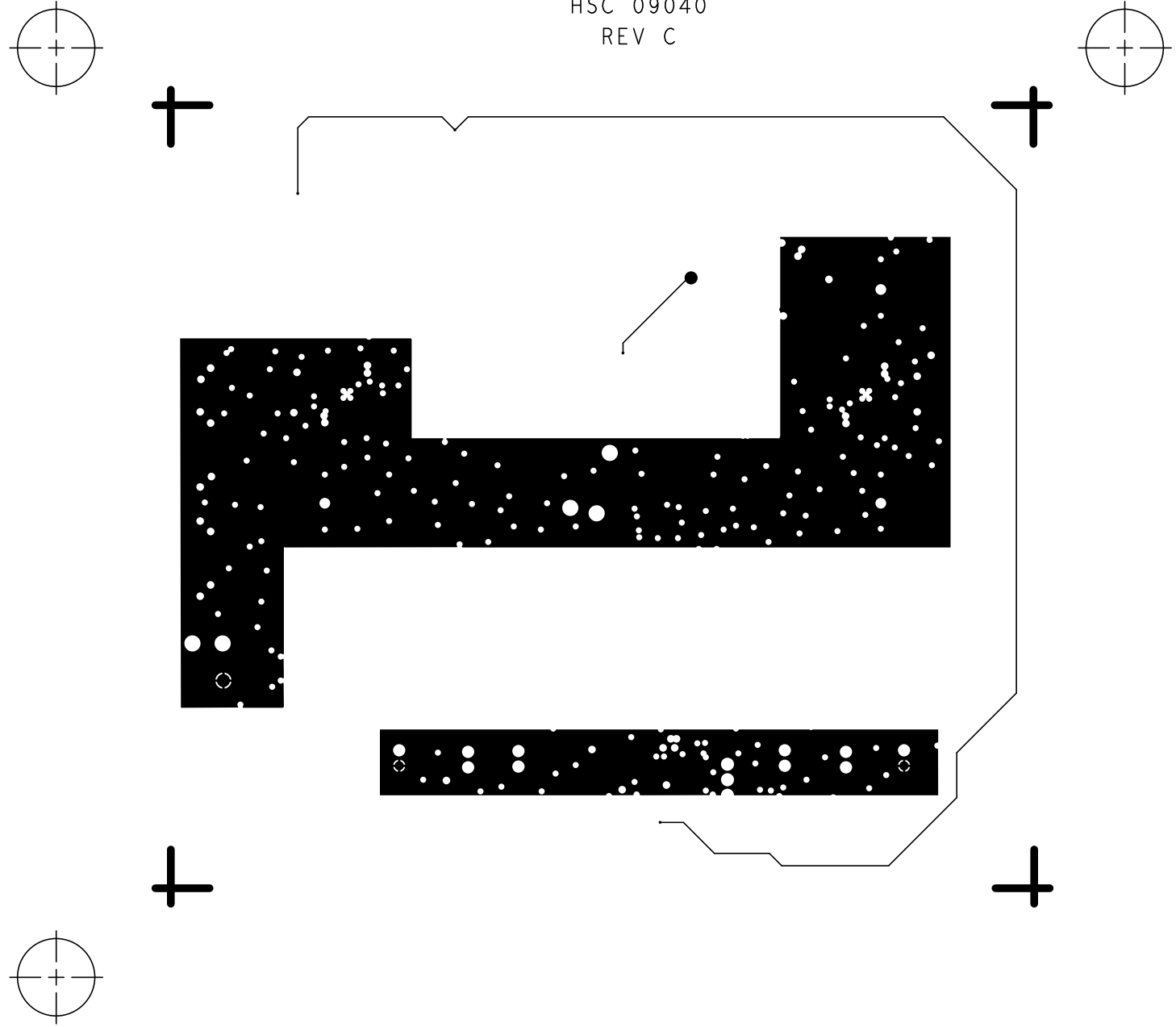


L4 POWER  
HSC 09040  
REV C

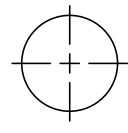
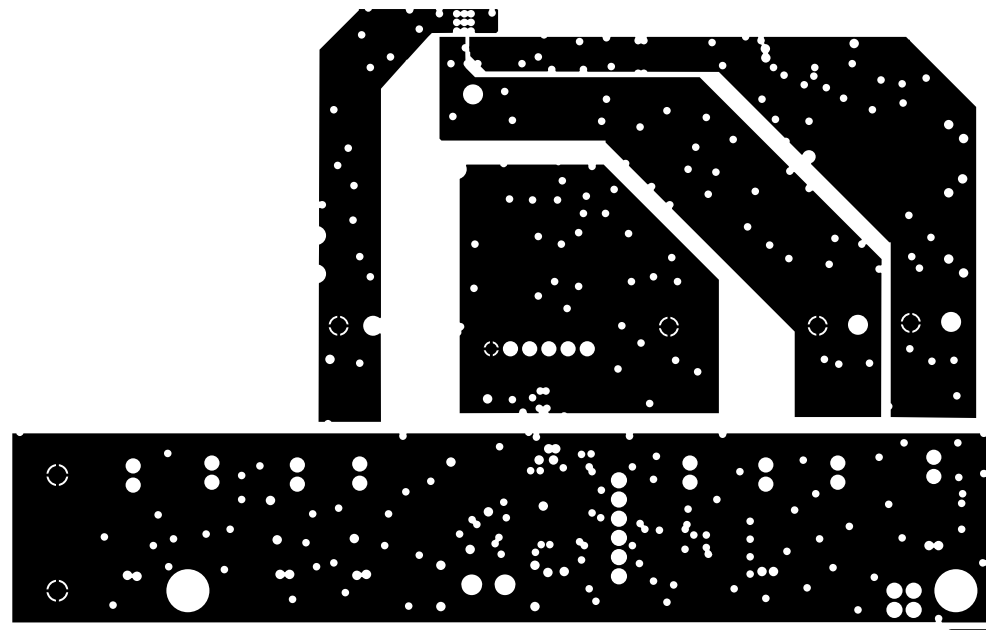
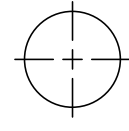
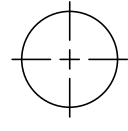




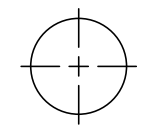
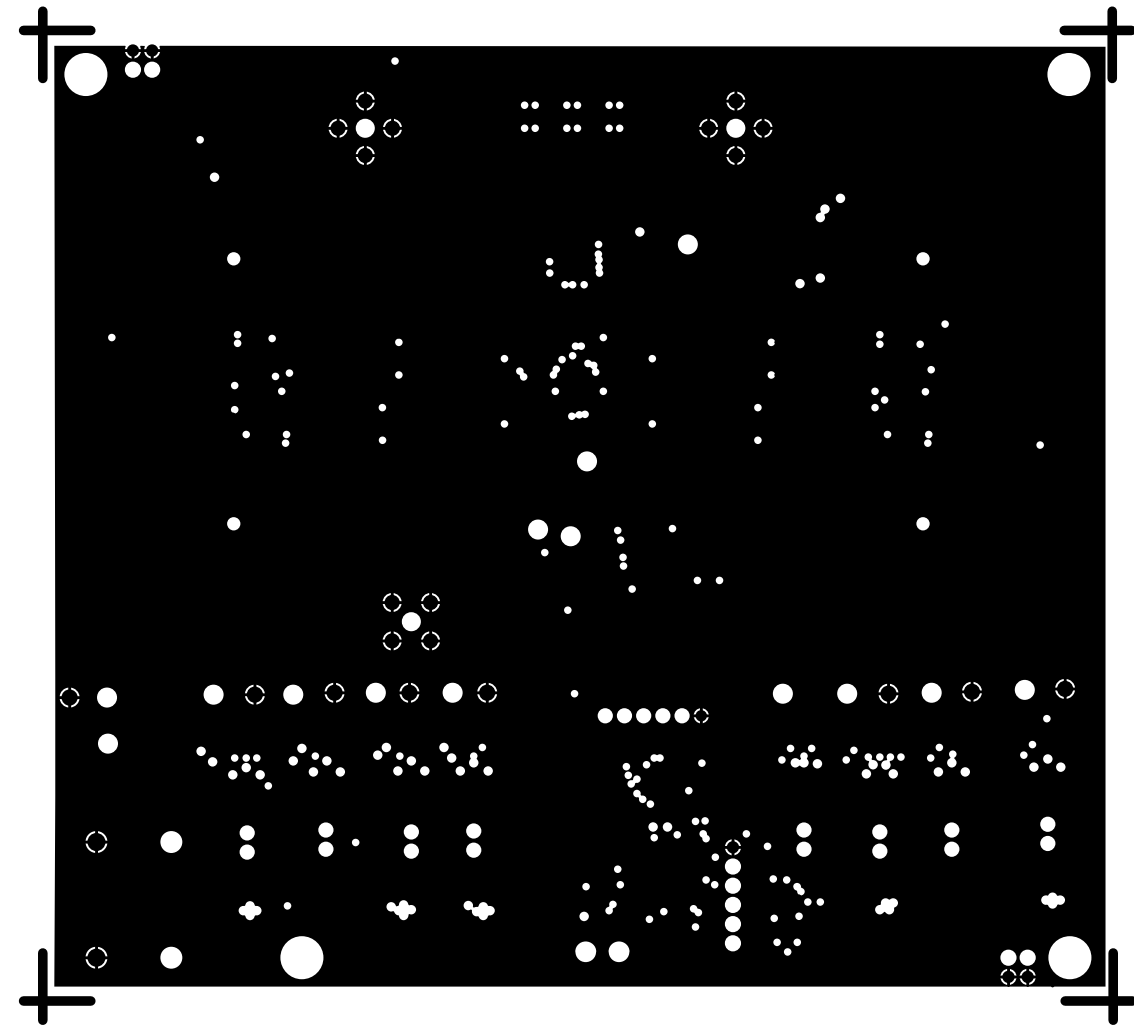
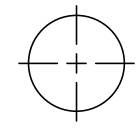
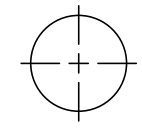
L5 POWER  
HSC 09040  
REV C



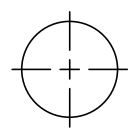
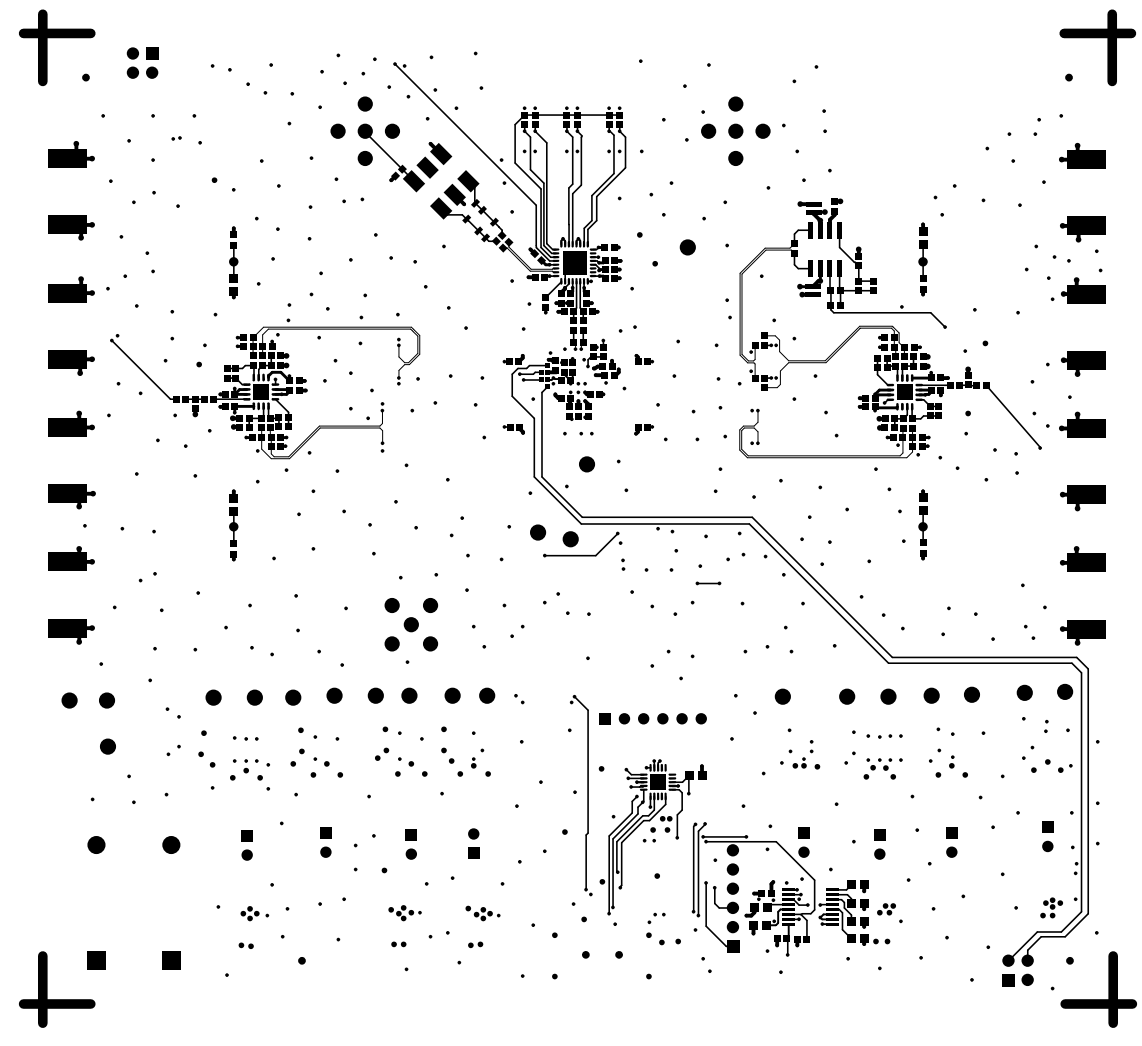
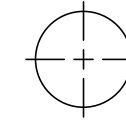
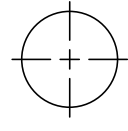
L6 POWER  
HSC 09040  
REV C



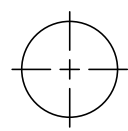
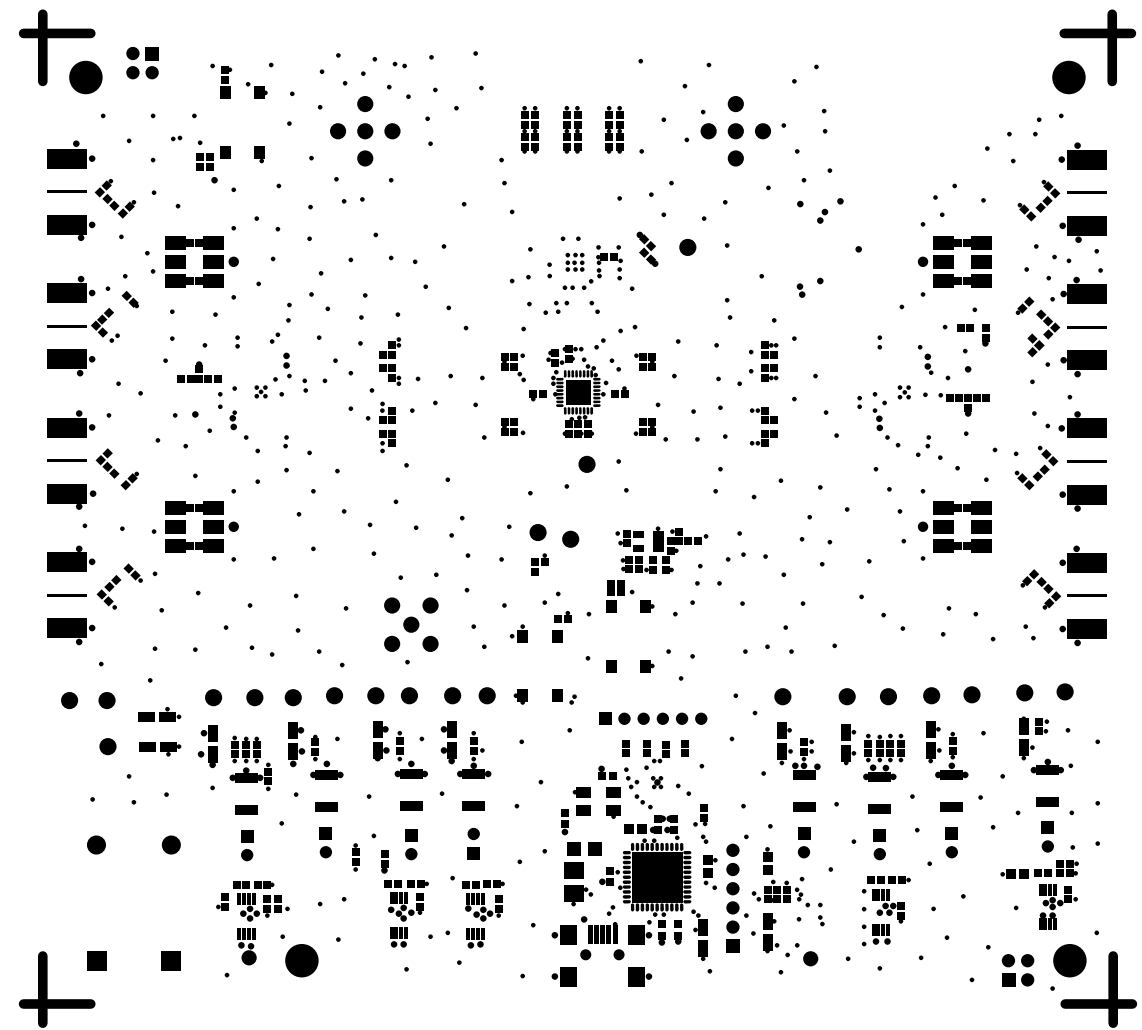
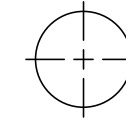
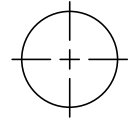
L7 GROUND  
HSC 09040  
REV C



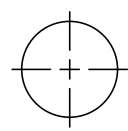
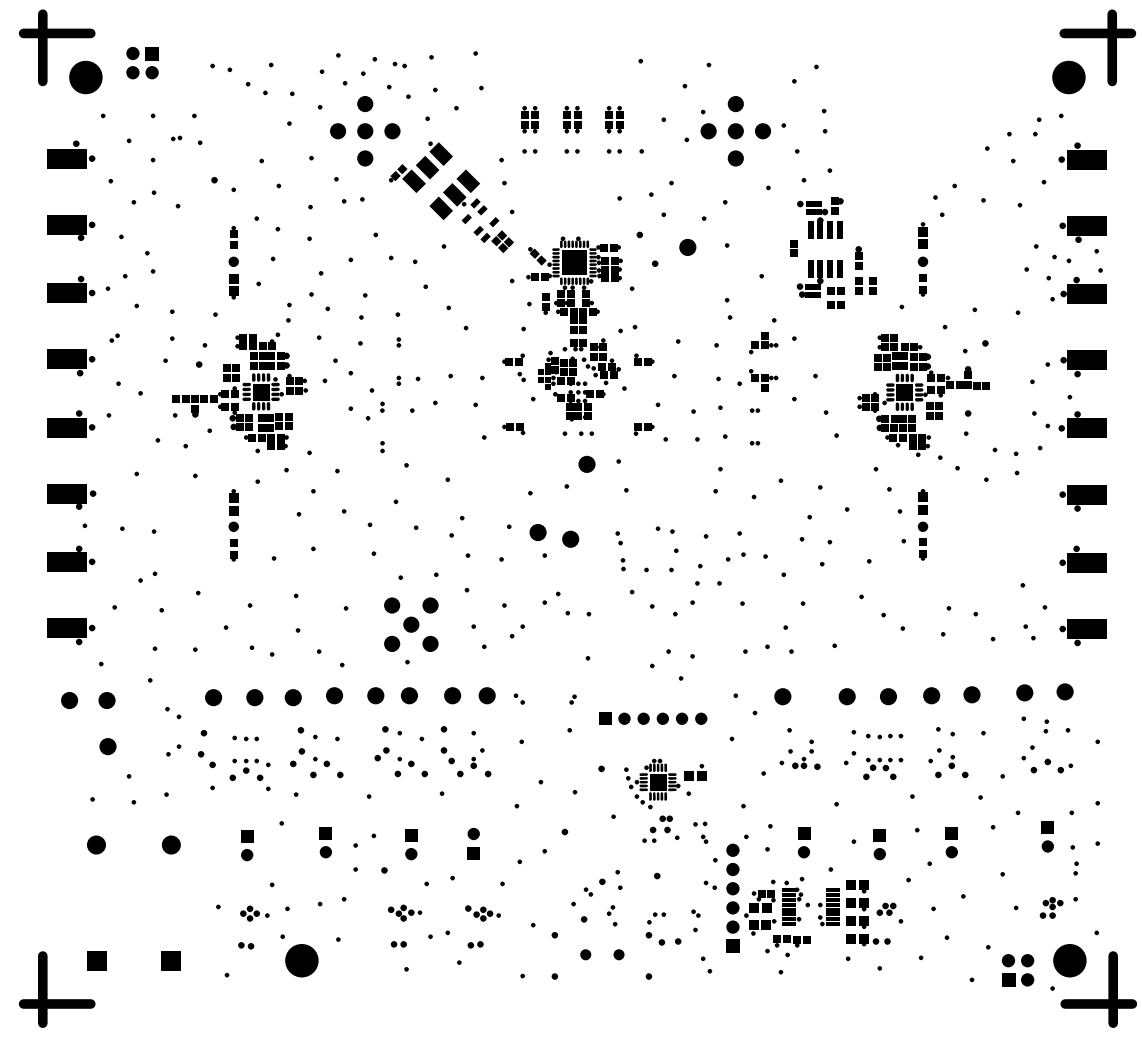
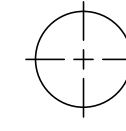
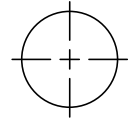
L8 SECONDARY  
HSC 09040  
REV C



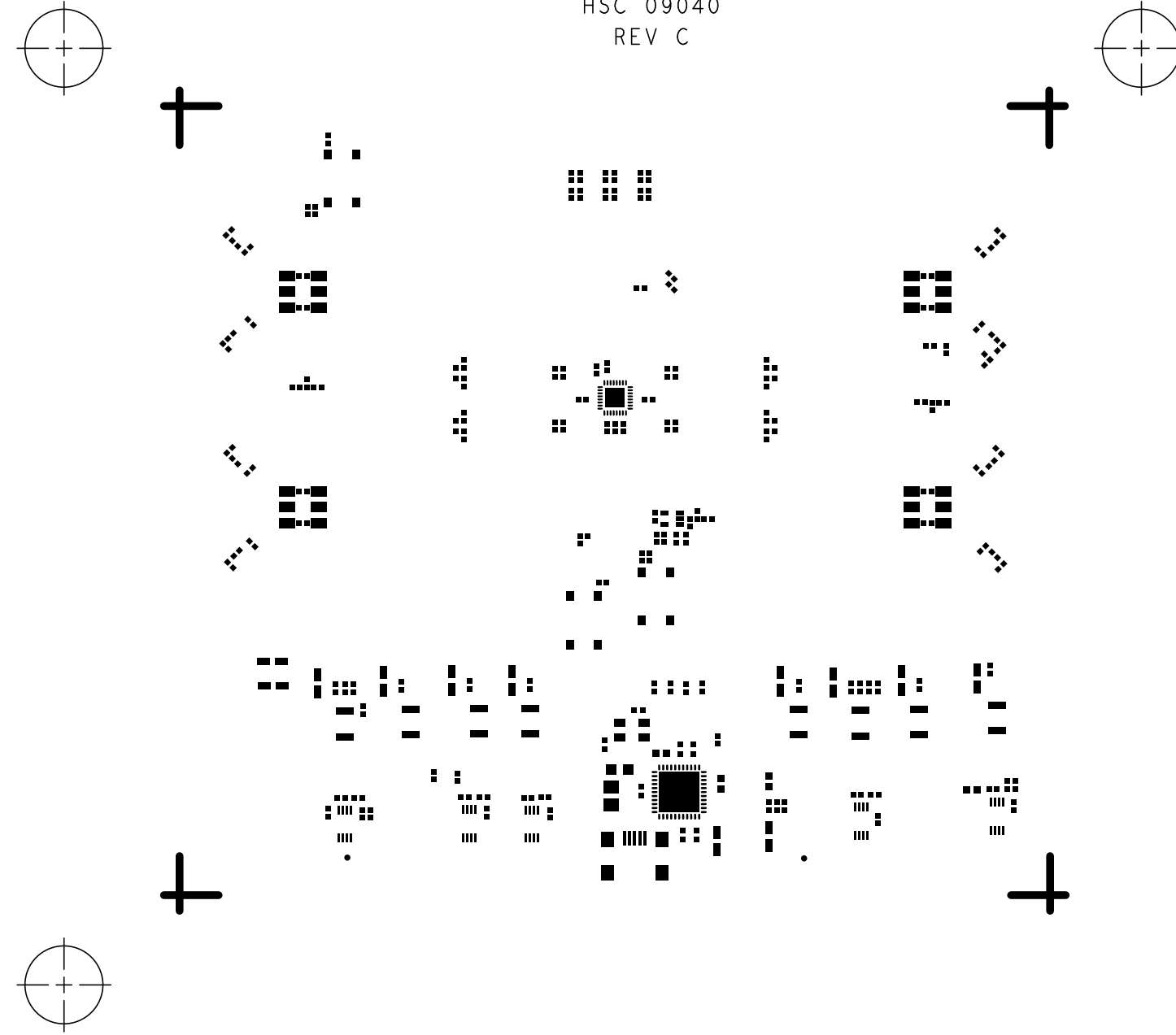
SOLDERMASK PRIMARY  
HSC 09040  
REV C



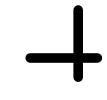
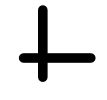
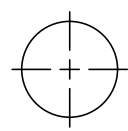
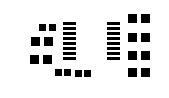
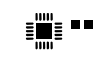
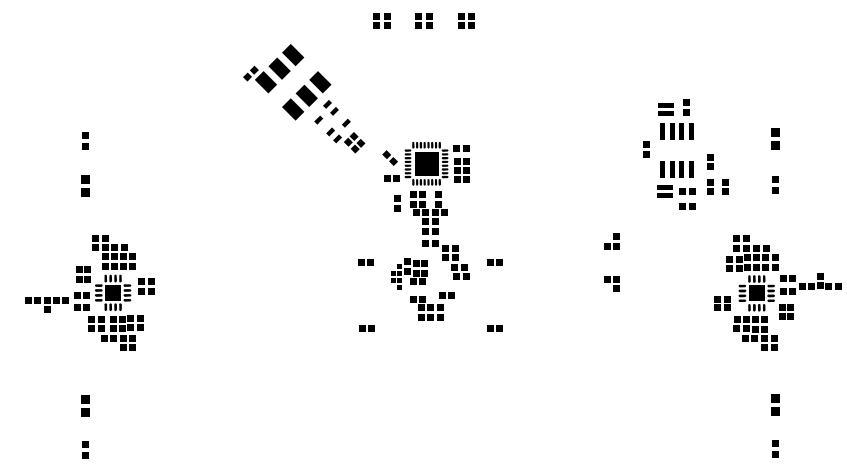
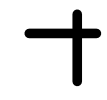
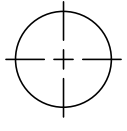
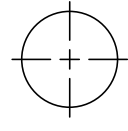
SOLDERMASK SECONDARY  
HSC 09040  
REV C



PASTEMASK PRIMARY  
HSC 09040  
REV C

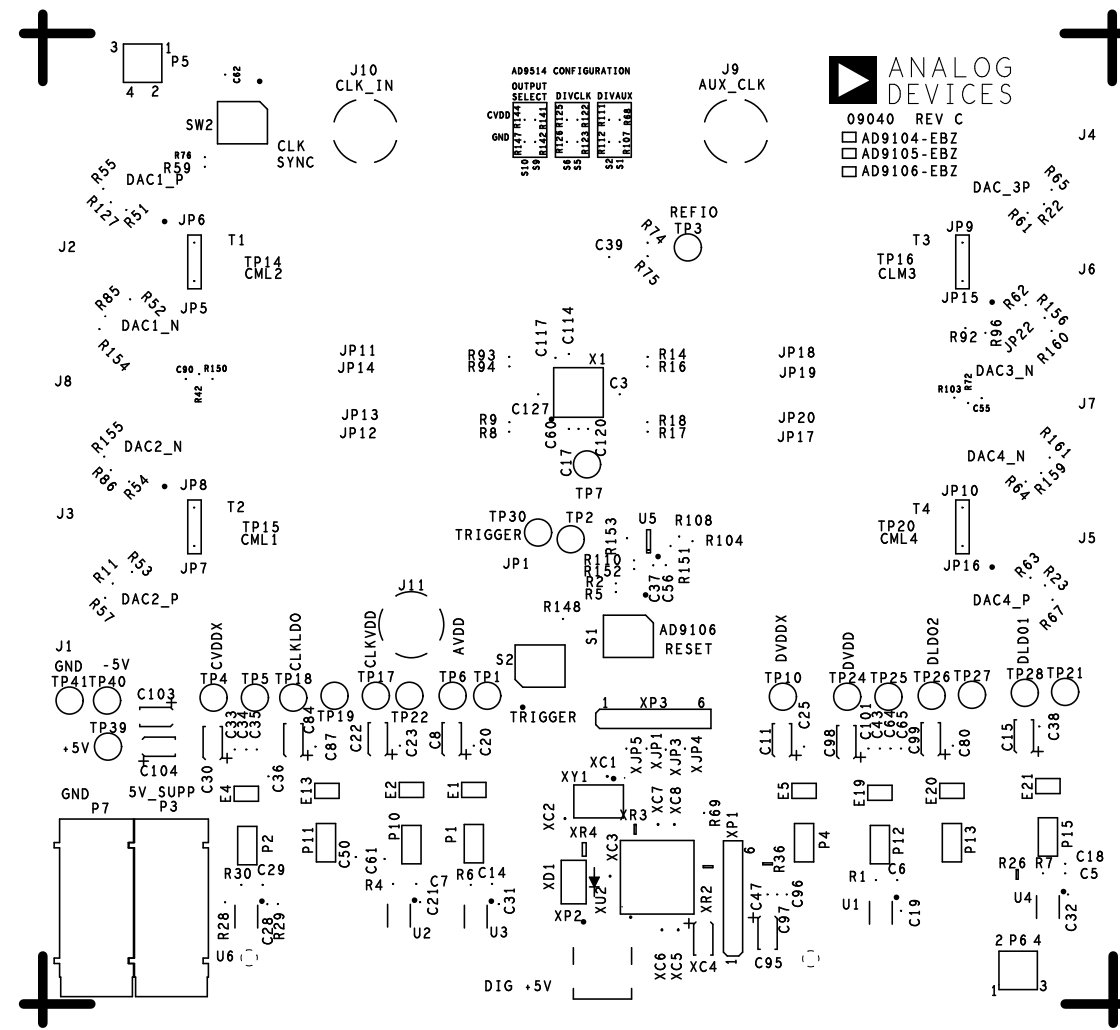
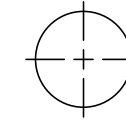
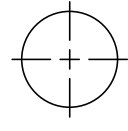


PASTEMASK SECONDARY  
HSC 09040  
REV C





SILKSCREEN PRIMARY  
HSC 09040  
REV C



**ANALOG DEVICES**  
09040 REV C  
□ AD9104-EBZ  
□ AD9105-EBZ  
□ AD9106-EBZ

