



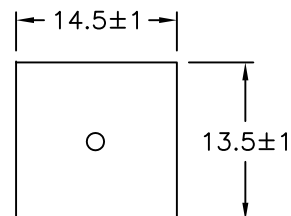
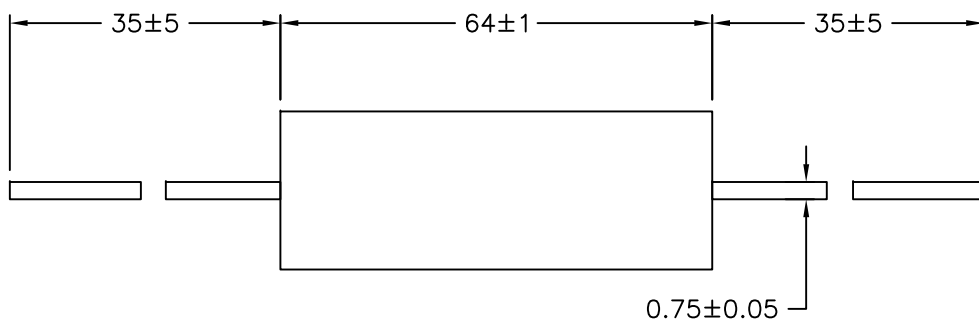
ALL RIGHTS RESERVED. NO PORTION OF THIS PUBLICATION, WHETHER IN WHOLE OR IN PART CAN BE REPRODUCED WITHOUT THE EXPRESS WRITTEN CONSENT OF SPC TECHNOLOGY.

SPC-F005.DWG

## REVISIONS

DOC. NO. SPC-F005 \* Effective: 7/8/02 \* DCP No: 1398

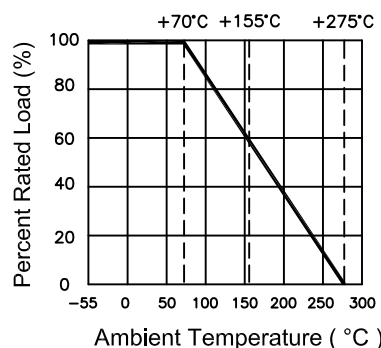
DCP #	REV	DESCRIPTION	DRAWN	DATE	CHECKD	DATE	APPRVD	DATE
1991	A	RELEASED	JN	05/15/09	JWM	05/15/09	JWV	05/15/09



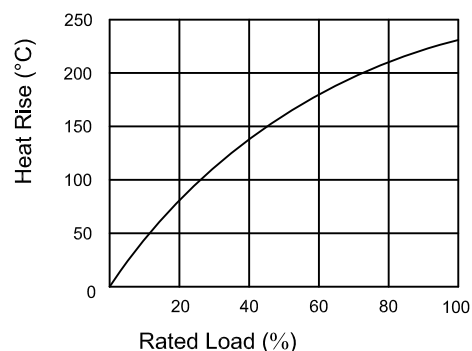
### Performance Specification

- Self extinguishing
- Excellent flame and moisture resistance
- Extremely small sturdy and mechanical safe
- Product Type: Wire-wound Resistor
- Power Rating: 25 Watts
- Resistance Tolerance:  $\pm 5\%$

### Derating Curve



### Heat Rise Chart



### Performance Specification

- Temperature coefficient:  $<20\Omega$ :  $\pm 400\text{PPM}/^\circ\text{C}$ ;  $\geq 20$ :  $\pm 350\text{PPM}/^\circ\text{C}$
- Short-time overload:  $\Delta R/R \leq \pm(5.0\% + 0.05\Omega)$ , with no evidence of mechanical damage.
- Dielectric withstanding voltage: No evidence of flashover, mechanical damage, arcing or insulation breakdown.
- Teminal strength: No evidence of mechanical damage.
- Solderability: Min. 95% coverage
- Temperature cycling:  $\Delta R/R \leq \pm(2.0\% + 0.05\Omega)$ , with no evidence of mechanical damage.
- Humidity (Steady State):  $\Delta R/R \leq \pm(5.0\% + 0.05\Omega)$ , with no evidence of mechanical damage.
- Load life in humidity: For Wire-wound range, the  $\Delta R/R$  is  $\pm 5\%$   
For Power film range,  $<100\text{K}\Omega$ , the  $\Delta R/R$  is  $\pm 5\%$   
For Power film range,  $\geq 100\text{K}\Omega$ , the  $\Delta R/R$  is  $\pm 10\%$
- Load Life: For Wire-wound range, the  $\Delta R/R$  is  $\pm 5\%$   
For Power film range,  $<100\text{K}\Omega$ , the  $\Delta R/R$  is  $\pm 5\%$   
For Power film range,  $\geq 100\text{K}\Omega$ , the  $\Delta R/R$  is  $\pm 10\%$
- Resistance to solderability heat:  $\Delta R/R \pm(1.0\% + 0.05\Omega)$  with no evidence of mechanical damage.

DISCLAIMER:  
ALL STATEMENTS AND TECHNICAL INFORMATION CONTAINED HEREIN ARE BASED UPON INFORMATION AND/OR TESTS WE BELIEVE TO BE ACCURATE AND RELIABLE. SINCE CONDITIONS OF USE ARE BEYOND OUR CONTROL, THE USER SHALL DETERMINE THE SUITABILITY OF THE PRODUCT FOR THE INTENDED USE AND ASSUME ALL RISK AND LIABILITY WHATSOEVER IN CONNECTION THEREWITH.

TOLERANCES:  
UNLESS OTHERWISE SPECIFIED, DIMENSIONS ARE FOR REFERENCE PURPOSES ONLY.

DRAWN BY:	DATE:
Jason Nash	05/15/09
CHECKED BY:	DATE:
JWM	05/15/09
APPROVED BY:	DATE:
JWM	05/15/09

DRAWING TITLE: 25watt (Wire-wound) Cement Fixed Resistors			
SIZE A	DWG. NO. Ta-1176	ELECTRONIC FILE Ta-1176.DWG	REV A
SCALE: NTS	U.O.M.: Millimeters	SHEET: 1 OF 2	

<b>Mfg. P/N</b>	<b>Resistance (Ohms)</b>
MCPRW025JW100B00	10
MCPRW025JW101B00	100
MCPRW025JW102B00	1k
MCPRW025JW150B00	15
MCPRW025JW151B00	150
MCPRW025JW200B00	20
MCPRW025JW201B00	200
MCPRW025JW20JB00	2
MCPRW025JW270B00	27
MCPRW025JW271B00	270
MCPRW025JW27JB00	2.7
MCPRW025JW300B00	30
MCPRW025JW301B00	300
MCPRW025JW30JB00	3
MCPRW025JW330B00	33
MCPRW025JW331B00	330
MCPRW025JW33JB00	3.3
MCPRW025JW390B00	39
MCPRW025JW391B00	390
MCPRW025JW39JB00	3.9
MCPRW025JW430B00	43
MCPRW025JW431B00	430
MCPRW025JW43JB00	4.3
MCPRW025JW470B00	47
MCPRW025JW471B00	470
MCPRW025JW47JB00	4.7
MCPRW025JW560B00	56
MCPRW025JW561B00	560
MCPRW025JW56JB00	5.6
MCPRW025JW680B00	68
MCPRW025JW681B00	680
MCPRW025JW68JB00	6.8
MCPRW025JW750B00	75
MCPRW025JW751B00	750
MCPRW025JW75JB00	7.5
MCPRW025JW820B00	82
MCPRW025JW821B00	820
MCPRW025JW82JB00	8.2

ALL RIGHTS RESERVED. NO PORTION OF THIS PUBLICATION, WHETHER IN WHOLE OR IN PART CAN BE REPRODUCED WITHOUT THE EXPRESS WRITTEN CONSENT OF SPC TECHNOLOGY.

SIZE  
**A**

DWG. NO.

**Ta-1176**

ELECTRONIC FILE

**Ta-1176.dwg**

REV  
**A**

SCALE: NTS

U.O.M.: Millimeters

SHEET: 2 OF 2