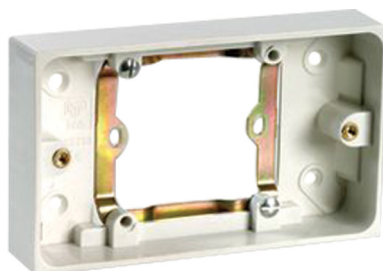


Converter

Single-To-Double Socket



Features:

- Two gang surface pattress box

Standard

- BS4662:2006+AMD16413

Conditions of Use:

An ambient temperature in the range -5°C to $+40^{\circ}\text{C}$, the average value over 24 hours not exceeding 25°C .

A situation not subject to exposure to direct radiation from the sun or other source of heat like to raise temperatures above the limits specified above.

An altitude not exceeding 2,000m above sea level.

An atmosphere not subject to abnormal pollution by smoke, chemical fumes, rain, spray, prolonged periods of high humidity or other abnormal conditions.

Safety Specifications:

Item	Conditions	Requirements
Appearance	-	No defect such as cracks, deep scratches or blemishes
Marking	-	Shall be legible and must be clear
Resistance to aging	$70^{\circ} \pm 5^{\circ}$ 168 hours	No cracks or become sticky
Torque test	Value of 0.6Nm (6.1kgf/cm)	Terminal, and fixing screws shall withstand the torque applied
Boiling Test	$100^{\circ} \pm 5^{\circ}$ 1 hours	No cracks

Construction:

Item	Description	Material
1	Box	Urea
2	Moultng Plate	Iron
3	Terminal Screw	Iron
4	Rivet	H58-3

Part Number Table

Description	Part Number
Converter, Single-to-Double Socket	868

Important Notice : This data sheet and its contents (the "Information") belong to the members of the Premier Farnell group of companies (the "Group") or are licensed to it. No licence is granted for the use of it other than for information purposes in connection with the products to which it relates. No licence of any intellectual property rights is granted. The Information is subject to change without notice and replaces all data sheets previously supplied. The Information supplied is believed to be accurate but the Group assumes no responsibility for its accuracy or completeness, any error in or omission from it or for any use made of it. Users of this data sheet should check for themselves the Information and the suitability of the products for their purpose and not make any assumptions based on information included or omitted. Liability for loss or damage resulting from any reliance on the Information or use of it (including liability resulting from negligence or where the Group was aware of the possibility of such loss or damage arising) is excluded. This will not operate to limit or restrict the Group's liability for death or personal injury resulting from its negligence. pro-ELEC is the registered trademark of the Group. © Premier Farnell plc 2012.