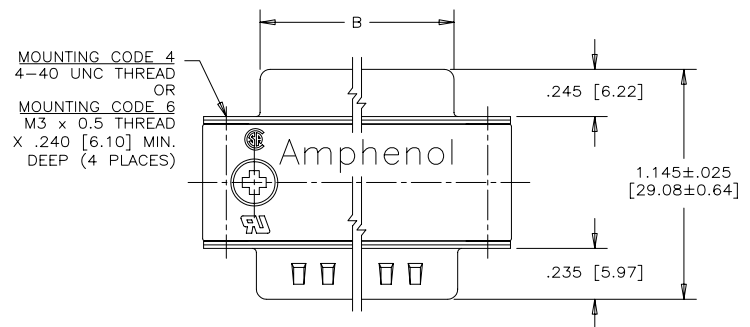


REVISIONS			
REV	ECN, ERN NO.	DATE	APPRD.
C	PRODUCT DRAWING (EAR 13398)	OCT31/08	K.L.



ORDERING CODE: F C E 1 7 - B 2 5 A D - 4 0 0 G

SERIES
FCE17=FILTERED D-SUB, RoHS

SIZE/NUMBER OF CONTACTS
E09, A15, B25, OR C37

CONNECTOR STYLE
AD=PIN/SOCKET ADAPTER

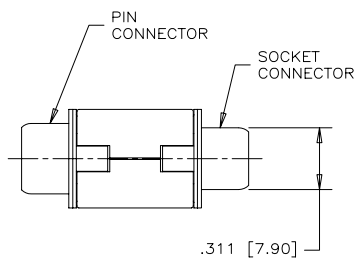
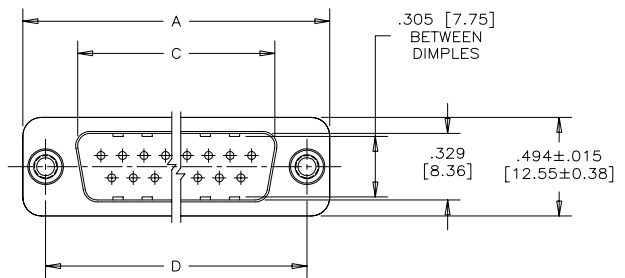
MOUNTING
2=.120 [3.05] DIA. THROUGH HOLE
WITH #4-40 MOUNTING POST
4=#4-40 UNC THREAD
6=M3 x 0.5 THREAD
K=.120 [3.05] DIA. THROUGH HOLE
WITH M3 x 0.5 MOUNTING POST

CONTACT FINISH/GOLD THICKNESS
NO DIGIT=STANDARD 15 MICRONS
[0.38 MICRONS] GOLD ON
MATING AREA
G=50 MICRONS [1.27 MICRONS]
GOLD ON MATING AREA

MODIFIER
O=STANDARD

FILTER CAPACITANCE
D=50 pF 5=1000 pF
B=100 pF 7=1200 pF
O=180 pF 6=1300 pF
T=220 pF J=1500 pF
F=330 pF E=2200 pF
L=380 pF 9=5600 pF
1=470 pF 8=47000 pF
2=680 pF N=NO FILTERS
4=820 pF

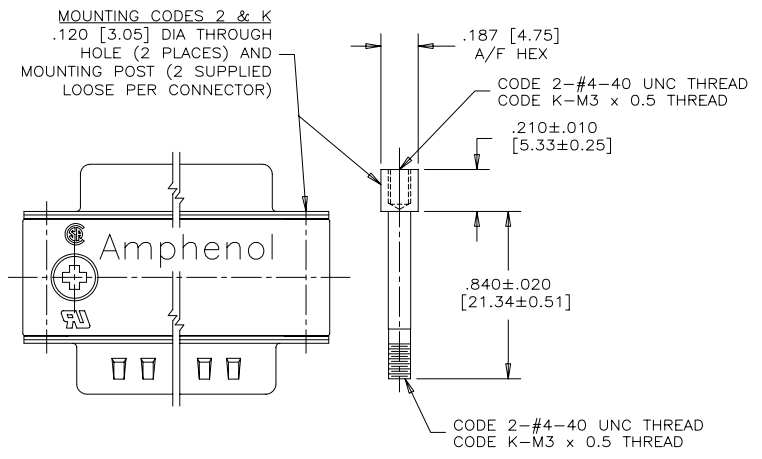
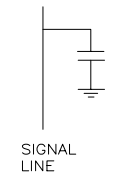
REFER TO AMPHENOL CATALOGUE
FOR FILTER PERFORMANCE
CHARACTERISTICS



NOTES:

- MATERIALS: - ALL MATERIALS ARE RoHS COMPLIANT
- SHELLS: TIN PLATED STEEL
- CONTACTS: PHOSPHOR BRONZE
PLATED WITH GOLD OVER 50µ" [1.27 MICRONS]
NICKEL ON MATING AREA. SEE ORDERING CODE.
- INSULATOR: ENGINEERING THERMOPLASTIC, GLASS
REINFORCED, FLAMMABILITY RATING UL94V-0, BLACK.
- OUTSIDE SHELLS: ZINC DIECAST, NICKEL PLATED
- MOUNTING HARDWARE: STEEL OR COPPER ALLOY,
TIN OR NICKEL PLATED
- CONTACT RESISTANCE: 30 MILLIOHMS MAXIMUM
- INSULATION RESISTANCE: 3000 MEGOHMS MINIMUM
- CURRENT RATING: 5 AMPS MAXIMUM
- OPERATING TEMPERATURE: -40°C TO 85°C.
- TOLERANCE, UNLESS INDICATED OTHERWISE, ±.005 [0.13].

CAPACITANCE SCHEMATIC FOR EACH POSITION



SIZE	A±.015 [0.38]	B±.005 [0.13]	C±.005 [0.13]	D±.005 [0.13]
E09	1.213 [30.81]	.643 [16.33]	.666 [16.92]	.984 [24.99]
A15	1.541 [39.14]	.971 [24.66]	.994 [25.25]	1.312 [33.32]
B25	2.088 [53.04]	1.511 [38.38]	1.534 [38.96]	1.852 [47.04]
C37	2.729 [69.32]	2.159 [54.84]	2.182 [55.42]	2.500 [63.50]

DRAWN	S.BUENAVIDES	DATE	DEC08/05
DESIGNED			
CHECKED	K.LAMBIE	DATE	DEC08/05
I. E. APPRD.			
Q. A. APPRD.			
DWG. APPRD.			
ENG. REL. NO.			
REF.	EAR 12888		
DIMENSIONS ARE IN		CODE ID. NO.	
INCHES [mm]		03554	



Amphenol Canada Corp.

FCE17 SERIES FILTERED D-SUB
CONNECTOR, MALE/FEMALE
ADAPTER, RoHS COMPLIANT

DWG. DRAWING NO. P-FCE17-XXXAD-XX0X REV. C

SCALE 2/1 WT. ----- SURF. ----- SHEET 1 of 1

THIS DOCUMENT CONTAINS PROPRIETARY INFORMATION AND SUCH INFORMATION MAY NOT BE DISCLOSED TO OTHERS FOR ANY PURPOSE OR USED FOR MANUFACTURING PURPOSES WITHOUT WRITTEN PERMISSION FROM AMPHENOL CANADA CORP.