

# MPA-104

## L1 Passive GPS

### 10 mm

### Description

This is a high-performance, very low profile antenna product designed for embedded applications, ideal for GPS handhelds, PDAs and tracking devices. The very compact size and lightweight features make this GPS embedded antenna one of a kind in the market and perfect for various commercial and industrial applications. With a typical high efficiency of 50%, this antenna can operate in the most extreme and demanding applications giving maximum satellite reception and great accuracy. The interface connector is a through pin solution.

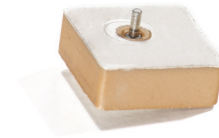


Image does not reflect the actual size of the antenna

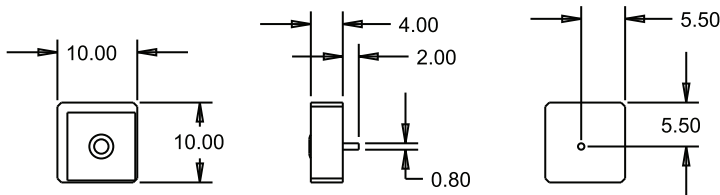
### Features

- GPS L1 frequency
- Adhesive mounting
- Pin connector
- Compact size
- Custom tuning

### Applications

- Vehicle & Fleet Tracking
- Embedded applications
- Handheld devices
- Military & Security
- Asset tracking
- PDAs/Laptops
- Oil & Gas industries
- Navigation devices
- Law Enforcement
- LBS & M2M Applications

### Mechanical Specifications



dimensions are in mm

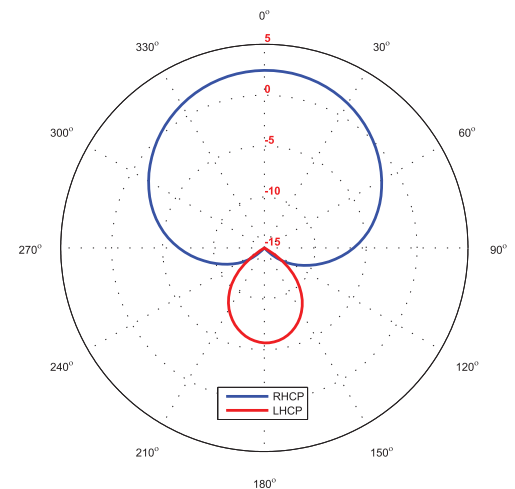
### Electrical Specifications

76X76 mm ground plane

Parameter	Design Specifications
Frequency	1575.42 MHz
Polarization	RHCP
Efficiency	50%
Realized gain	2.5 dBic
Axial ratio	1.5 dB (typical) / 2.5 dB (max)
Bandwidth (-1dB)	10 MHz
Beamwidth (3dB)	100° (both axes)
CP rejection	15 dB (typical) / 10 dB (min)
VSWR	1.3:1
Impedance	50 Ohm
Operating temp.	from -40°C to 85°C

### Realized gain plot

Measured at 1575.42 MHz on a 76X76 mm ground plane



Maxtena Inc.  
7361 Calhoun Place, Suite 102  
Rockville, MD 20855  
1-877-629-8362  
sales@maxtena.com

www.maxtena.com