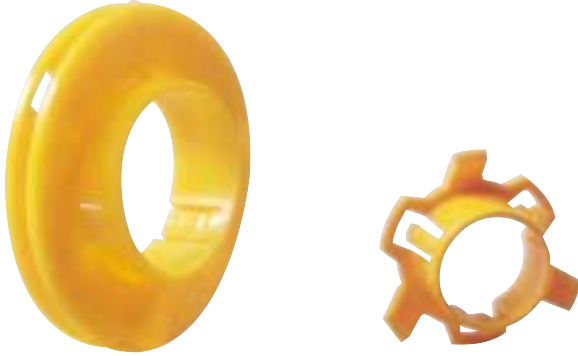


## Bushings for Metal Stud Punches



- Triple lock design holds bushing securely.
- Locks securely into metal studs from 24 gauge to 12 gauge (0.6 mm to 2.5 mm).
- Helps protect wire insulation from sharp edges of metal studs.
- Makes pulling smooth and easy by preventing hang-ups of cable on raw metal edges.

Cat. No.	UPC No.	Description	Weight	
			lbs.	kg.
711C	22288	100 Bushings for hole punched by 709 for 7/8" (22.2 mm) diameter hole	.5	.23
711M	22289	1,000 Bushings for hole punched by 709 for 7/8" (22.2 mm) diameter hole	3.7	1.7
712A100	05927	100 Bushings for pre-punched hole or 1-11/32" (34.1 mm) diameter hole punched by 710	1.4	.64
712A1000	05928	1,000 Bushings for pre-punched hole or 1-11/32" (34.1 mm) diameter hole punched by 710	15.5	7.0

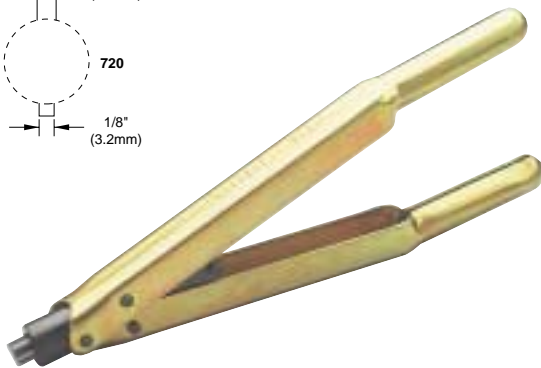
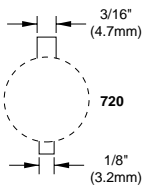
## Bushings for Pre-Punched Holes



- Self-locking grooves hold bushing securely.
- Permits fast and easy installation of cable.
- Helps prevent noise.
- Maximum application temperature 194°F (90°C).
- Not for use with non-metallic sheathed cable.

Cat. No.	UPC No.	Description	Weight	
			lbs.	kg.
714C	34355	100 Bushings for opening in 1-5/8" (41.3 mm) steel studs	.5	.23
714M	22569	1,000 Bushings for opening in 1-5/8" (41.3 mm) steel studs	4.7	2.1
715C	34356	100 Bushings for opening in 2-1/2" (63.5 mm) and 3-1/2" (88.9 mm) steel studs	.9	.41
715M	22570	1,000 Bushings for opening in 2-1/2" (63.5 mm) and 3-1/2" (88.9 mm) steel studs	8	3.6

## 720 Keyway Punch

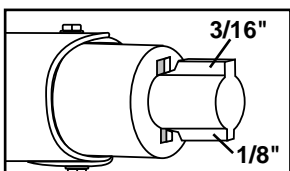


- Eliminates time consuming hand sawing and filing when making keyways for push button switches.
- Use as a nibbler to make wider or deeper keyways.
- Punches 1/8" (3.2 mm) or 3/16" (4.8 mm) keyways for 7/8" (22.5 mm) or 1-7/32" (30.5 mm) push button holes.
- Patented - U.S. Patent No. 4,375,128; Canadian Patent No. 1,172,435.

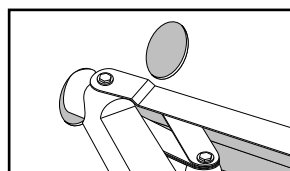
Cat. No.	UPC No.	Description	Weight	
			lbs.	kg.
720	26534	Keyway Punch	2.8	1.27

### SPECIFICATIONS

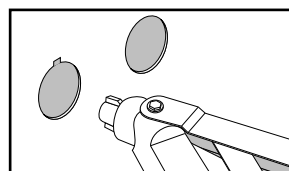
Operation: Manual  
 Capacity: 10 gauge (3.5 mm) mild steel.



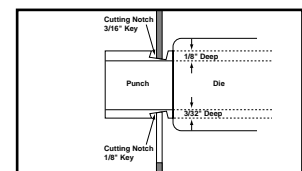
1. Locate proper cutting notch on the cutting head.



2. Place cutting notch inside edge of hole and cut keyway.



3. Withdraw the punch.



4. Use as a nibbler to make wider or deeper keyways.