

In-line PSU

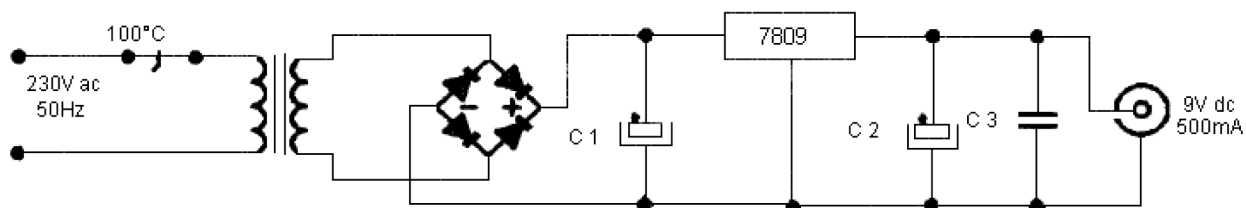
500mA



Specifications:

Power Supply Output Type	: Fixed
No. of Outputs	: 1
Applications	: General Purpose
Approval Bodies	: CE
Connector Type	: Barrel
Mounting Type	: Screw
Operating Temperature	: 0°C to +70°C
Plug Type	: Euro
Power Supply Type	: Linear
Input Volts	: 230V AC
Frequency	: 50Hz
Max. MAG Current	: 30mA
Output Volts	: 9V DC
Output Current	: 500mA
Flash Test	: 3.75kV
Output Connector	: 2.1mm × 5.5mm × 12mm
Output Polarity	: Centre +ve
Lead Length	: 1.8m
Length	: 91mm
Depth	: 53.5mm
Width	: 68mm
Mounting	: Wall
Mounting Centres	: 105mm
Weight	: 500g

Schematic



Part Number Table

Description	Part Number
PSU, In-line, 9V, 500mA	T2560AD

Important Notice : This data sheet and its contents (the "Information") belong to the members of the Premier Farnell group of companies (the "Group") or are licensed to it. No licence is granted for the use of it other than for information purposes in connection with the products to which it relates. No licence of any intellectual property rights is granted. The Information is subject to change without notice and replaces all data sheets previously supplied. The Information supplied is believed to be accurate but the Group assumes no responsibility for its accuracy or completeness, any error in or omission from it or for any use made of it. Users of this data sheet should check for themselves the Information and the suitability of the products for their purpose and not make any assumptions based on information included or omitted. Liability for loss or damage resulting from any reliance on the Information or use of it (including liability resulting from negligence or where the Group was aware of the possibility of such loss or damage arising) is excluded. This will not operate to limit or restrict the Group's liability for death or personal injury resulting from its negligence. Multicomp is the registered trademark of the Group. © Premier Farnell plc 2012.

