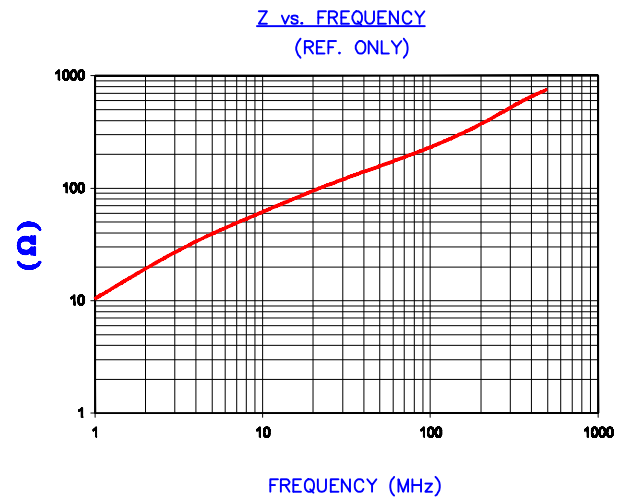
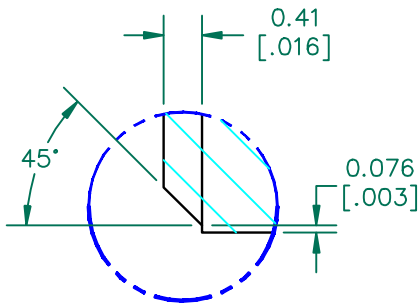


IMPEDANCE (Z)			
Frequency	25 MHz	100 MHz	300 MHz
Nominal (REF)	110 Ω	230 Ω	520 Ω
Minimum	- Ω	184 Ω	- Ω



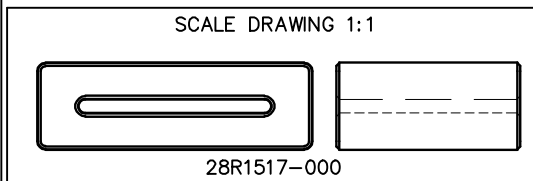
UNCONTROLLED DOCUMENT



FERRITE CORE DIMENSIONS (SPEC) mm/Inches:

A	38.10 [1.500]	+	0.76 [0.030]
B	26.67 [1.050]	+	0.76 [0.030]
C	25.40 [1.000]	+	0.76 [0.030]
D	12.07 [.475]	+	0.51 [.020]
E	1.91 [.075]	+	0.51 [.020]

WEIGHT/1000 51.18 kgs [112.84 Lbs]



DIMENSIONS ARE IN mm[INCHES]				THIS DOCUMENT CONTAINS INFORMATION WHICH IS PROPRIETARY AND CONFIDENTIAL TO STEWARD. NO PRODUCTION OR PUBLICATION OF THIS DOCUMENT IN WHOLE OR IN PART SHALL BE MADE WITHOUT WRITTEN AUTHORIZATION FROM STEWARD.			
H	UPDATE MIN Z SPECS & COMPANY LOGO	07/27/07	TMB				
G	UPDATE MIN Z SPEC @100Mhz ADD REF #	02/09/04	JRK				
F	UPDATE FORMAT, UPDATE Z SPECS	02/26/03	JRK				
E	UPDATE PRINT FOR ELECTRONIC DATABASE	01/03/01	JAJ				
D	UPDATED Z SPECS	05/07/96	BAC				
C	UPDATED P/N FOR NEW CATALOG	11/09/95	JBE				
B	CHANGED Z SPECS	09/03/94	DLR				
A	ADD Z SPECS	02/26/93	JAZ				
01	ORIGINAL DRAFT	03/09/92	DJB				
REV	DESCRIPTION	DATE	INT				
PROJECT/PART NUMBER: 28R1517-000				REV: H	PART TYPE: CNZ RIBBON CORE	DRAWN BY: DJB	
DATE: 03/09/92				SCALE: 2 : 1		MATERIAL: NiZn FERRITE	
CAD # 28R1517-000-H				TOOL # R1517			