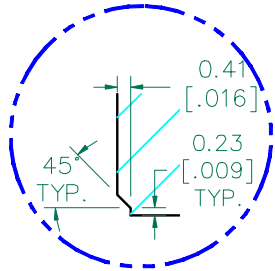


SEE DETAIL "A"

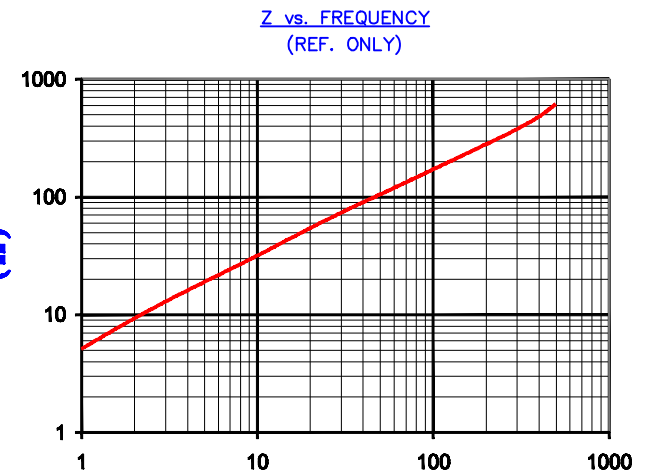
SECTION A-A



DETAIL "A"
CHAMFER
SCALE=4.5:1

UNCONTROLLED DOCUMENT

IMPEDANCE (Z)			
Frequency	25 MHz	100 MHz	300 MHz
Nominal (REF)	65 Ω	170 Ω	375 Ω
Minimum	- Ω	136 Ω	- Ω

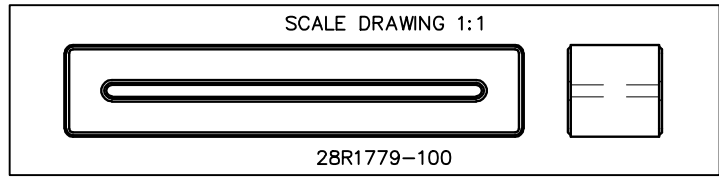


AGILENT E4991A Impedance/Material Analyzer
HP 16092A-Test Fixture, REF #2981

FERRITE CORE DIMENSIONS (SPEC): mm [in]

A	63.50 [2.500]	±	1.27 [.050]
B	52.07 [2.050]	±	1.02 [.040]
C	12.98 [.511]	±	0.38 [.015]
D	12.70 [.500]	±	0.51 [.020]
E	1.68 [.066]	±	0.51 [.020]

WEIGHT/1000 45.72 kgs [100.80 Lbs]



DIMENSIONS ARE IN mm[INCHES].				THIS DOCUMENT CONTAINS INFORMATION WHICH IS PROPRIETARY AND CONFIDENTIAL TO STEWARD. NO PRODUCTION OR PUBLICATION OF THIS DOCUMENT IN WHOLE OR IN PART SHALL BE MADE WITHOUT WRITTEN AUTHORIZATION FROM STEWARD.			
K	UPDATE MIN Z SPECS & COMPANY LOGO	07/27/07	TMB				
J	UPDATE MIN Z SPEC ADD TEST REF#	11/18/04	JRK				
H	CHANGE PRINT FORMAT CHANGE Z SPECS REMOVE NOTE 1	05/19/03	TMB				
G	CHANGE Kgs FROM 101.20 Kgs TO 45.72 Kgs	09/24/02	TMB				
F	ADD ZRX CURVE TO PRINT REVISE PART LAYOUT FORMAT REVISE ELECTRICAL TESTING FORMAT, NOTES, AND WEIGHT/1000 kgs [Lbs]	09/10/02	TMB				
				PROJECT/PART NUMBER:	REV	PART TYPE:	DRAWN BY:
				28R1779-100	K	FERRITE RIBBON CORE	LNK
				DATE:	SCALE:	MATERIAL:	
				02/24/93	1.5 : 1	NiZn Ferrite	
REV				DESCRIPTION	DATE	INT	