

PART NAME

NEMA 4X DIE-CAST ALUMINUM BOX w/MTG. BRKTS.

PART No.

AN-2853 & AN-2853-B

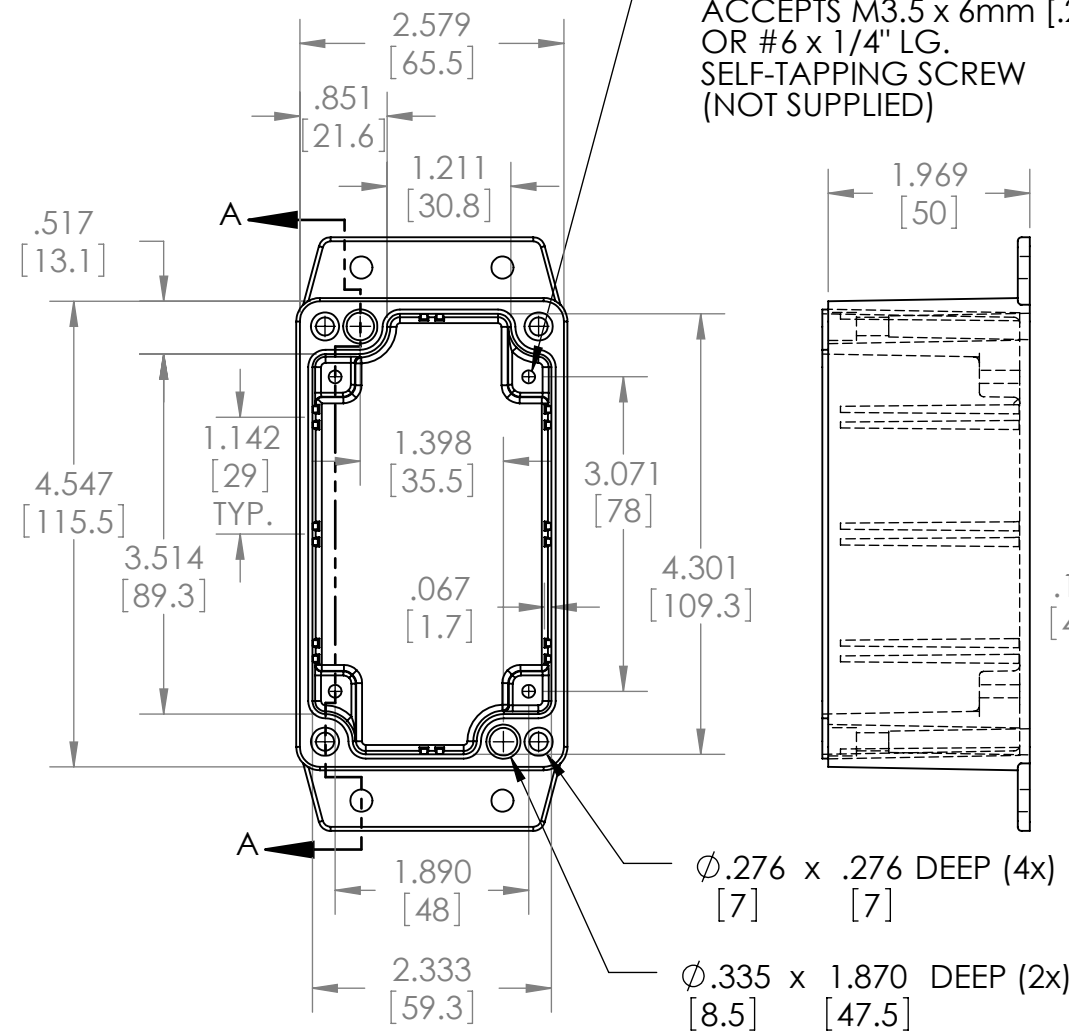
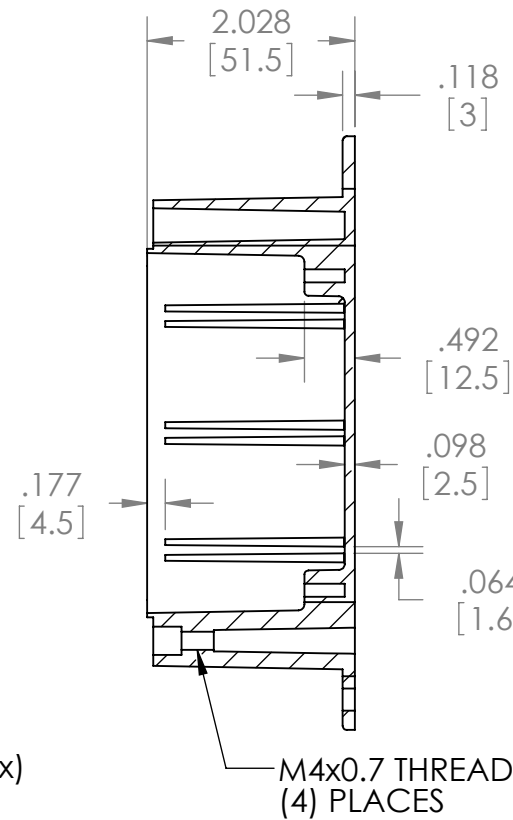
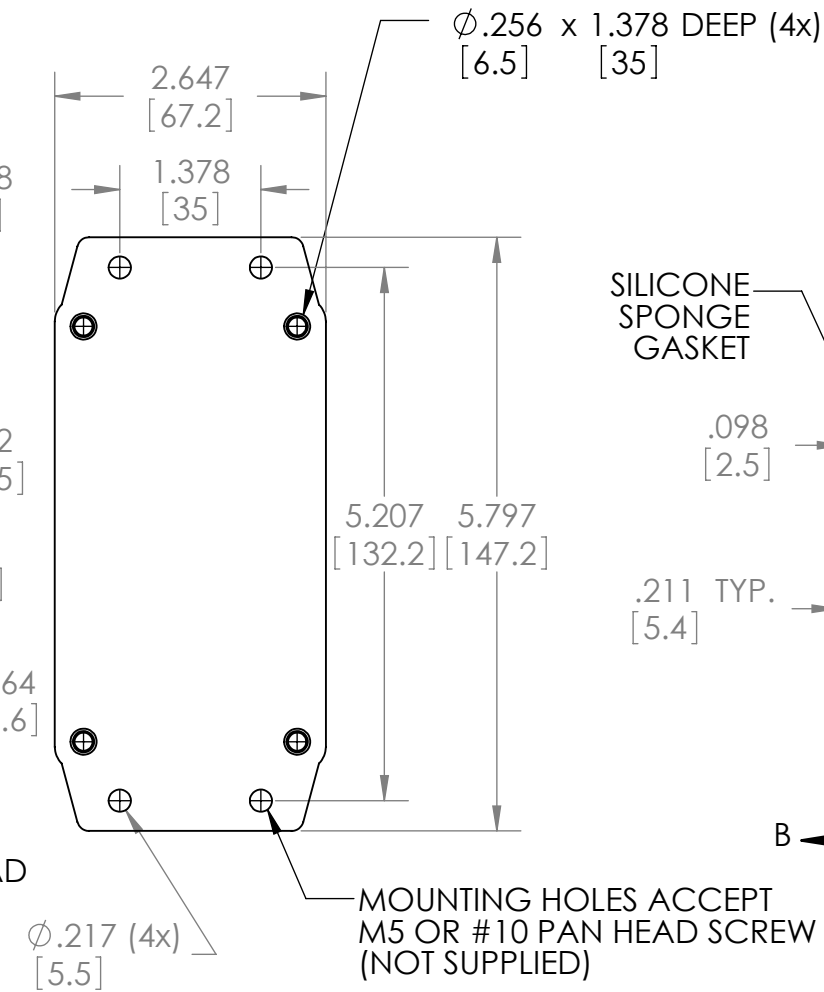
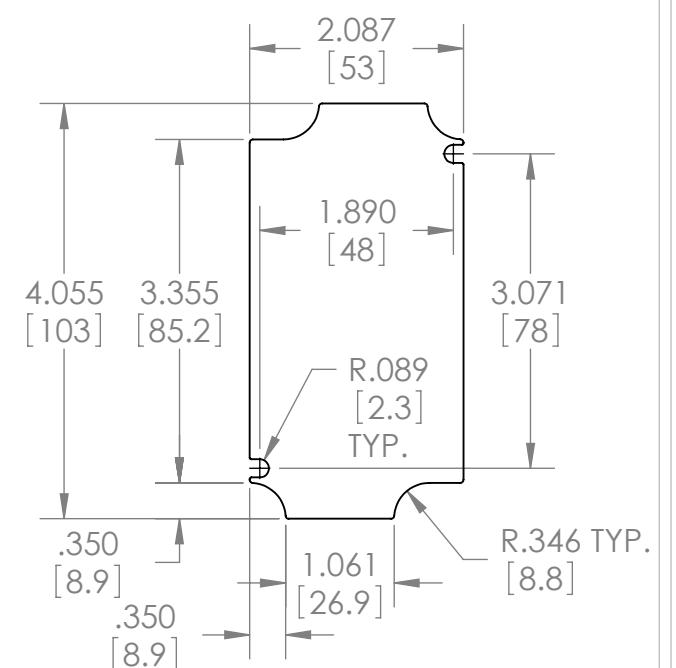
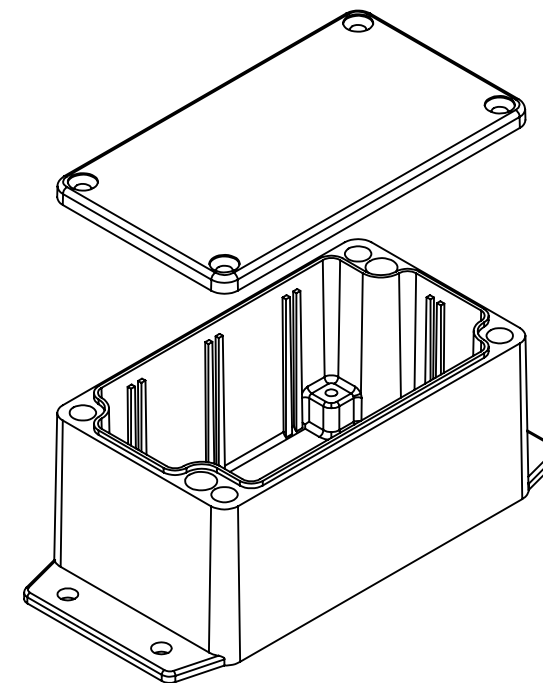
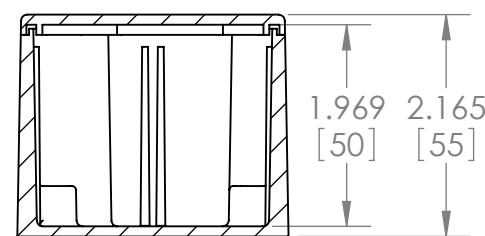
REVISION DATE

11-15-11

MATERIAL: ALUMINUM ALLOY #ADC-12

FINISH: NATURAL (NO SUFFIX)
SMOOTH BLACK (SUFFIX -B)

$\phi .126 \times .394$ DEEP (4x)
[3.2] [10]
ACCEPTS M3.5 x 6mm [.24"] LG.
OR #6 x 1/4" LG.
SELF-TAPPING SCREW
(NOT SUPPLIED)

**BODY****SECTION A-A****COVER****SUGGESTED PC BOARD LAYOUT****NOTES:**

- 1.) FOUR (4) M4x0.7 x 20mm (.79") LG. CSK. HEAD STAINLESS STEEL SCREWS SUPPLIED FOR ASSEMBLY OF COVER TO BODY.
- 2.) ALL HOLE DIAMETERS HAVE $\pm .005$ [$\pm .13$] TOLERANCE
ALL OTHER DIMENSIONS HAVE $\pm .015$ [$\pm .38$] TOLERANCE
- 3.) ALL OUTSIDE AND INSIDE DRAFT ANGLE: 1°