

# Customer Information Sheet

DRAWING No.: S1721-XX

SHEET 2 OF 2

IF IN DOUBT - ASK

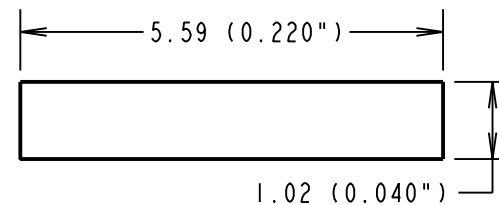
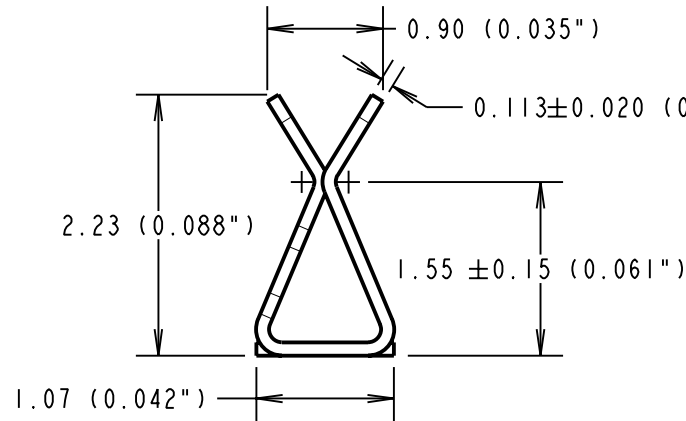
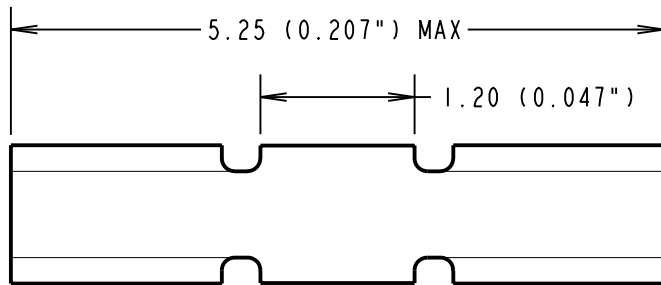
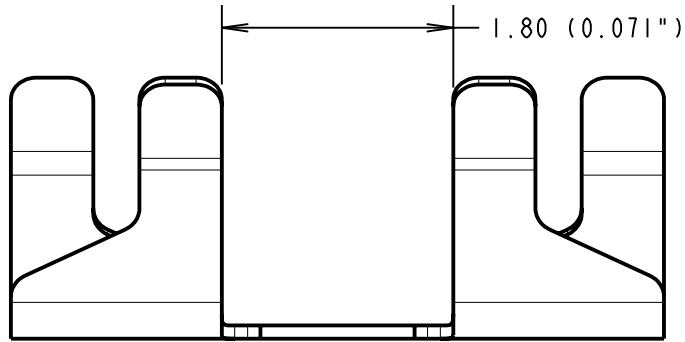
©

NOT TO SCALE

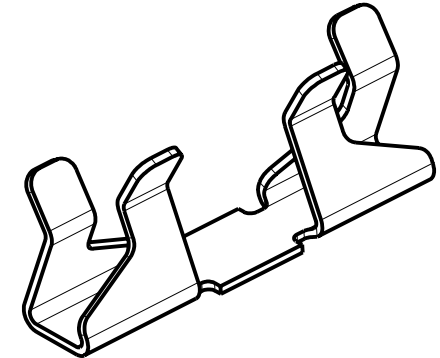
THIRD ANGLE PROJECTION

ALL DIMENSIONS IN mm

INCHES CONVERSION IN ( )



RECOMMENDED PAD LAYOUT



0.113 ± 0.020 (0.0044") MATERIAL THICKNESS AFTER PLATING

PART No.	FINISH:
S1721-06	90/10 TIN/LEAD
S1721-46	100% TIN

COMPONENT SPECIFICATION:  
 MATERIAL = BERYLLIUM COPPER  
 FINISH = '06' = 3μ 90/10 TIN/LEAD  
 '46' = 3μ 100% TIN,  
 OVER 2.0μ NICKEL  
 SHIELD THICKNESS = 0.13-0.23mm

RA	4	05.07.10	10860
NAME	ISS.	DATE	C/NOTE
APPROVED:		R. ADDE	
CHECKED:		M.G. PLESTED	
DRAWN:		J. ENRIGHT	
CUSTOMER REF.:			
ASSEMBLY DRG:			

PERFORMANCE SPECIFICATION:  
 ENGAGEMENT FORCE = 5N MAX.  
 DISENGAGEMENT FORCE = 0.35N MIN.  
 DURABILITY = 15 ACTUATIONS MIN.  
 CONTACT RESISTANCE = 40mΩ MAX.

NOTES:

- FOR TAPE AND REELED VERSION, SEE DRAWING S1721-06R.
- PACKING: - 100 COMPONENTS PER BAG  
 NB: COMPONENTS SUPPLIED IN TAPE POCKETS TO AVOID DAMAGE DURING STORAGE AND TRANSIT.

**HARWIN**

THIS DRAWING AND ANY INFORMATION OR DESCRIPTIVE MATTER SET OUT HEREON ARE CONFIDENTIAL AND COPYRIGHT PROPERTY OF THE HARWIN GROUP AND MUST NOT BE DISCLOSED, LOANED, COPIED OR USED FOR MANUFACTURING, TENDERING OR FOR ANY OTHER PURPOSE WITHOUT THEIR WRITTEN PERMISSION.

TOLERANCES

X. = ±1mm  
 X.X = ±0.25mm  
 X.XX = ±0.10mm  
 X.XXX = ±0.01mm

ANGLES = ±5°  
 UNLESS STATED

MATERIAL:

SEE ABOVE

FINISH: SEE ABOVE

S/AREA: mm<sup>2</sup>

TITLE:

MINI SMT RFI SHIELD CLIP (LOOSE)

DRAWING NUMBER:

S1721-XX

SHT 2 OF 2

HARWIN USA  
 TEL: 603 893 5376  
 FAX: 603 893 5396  
 mis@harwin.com

HARWIN Europe (UK)  
 TEL: 023 9231 4545  
 FAX: 023 9231 4590  
 mis@harwin.co.uk

HARWIN Asia  
 TEL: +65 6 779 4909  
 FAX: +65 6 779 3868  
 mis@harwin.com.sg