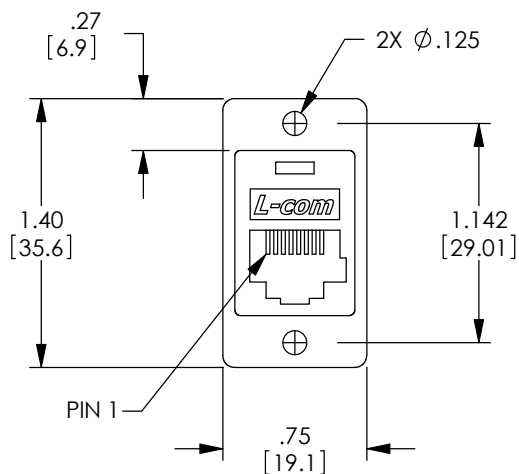
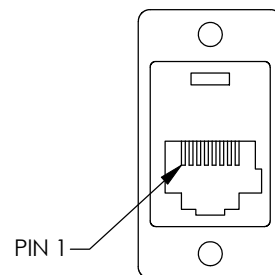
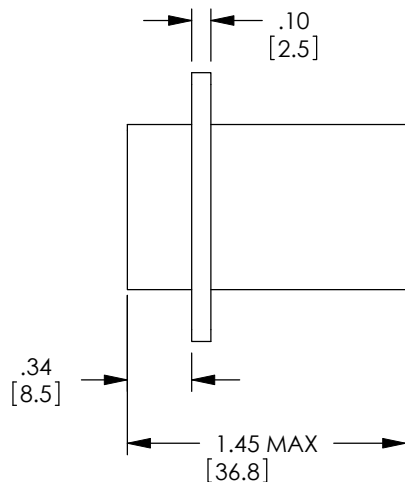


THE INFORMATION CONTAINED IN THIS DRAWING IS THE SOLE PROPERTY OF L-COM, INC. ANY REPRODUCTION IN PART OR WHOLE WITHOUT THE WRITTEN PERMISSION OF L-COM, INC. IS PROHIBITED.

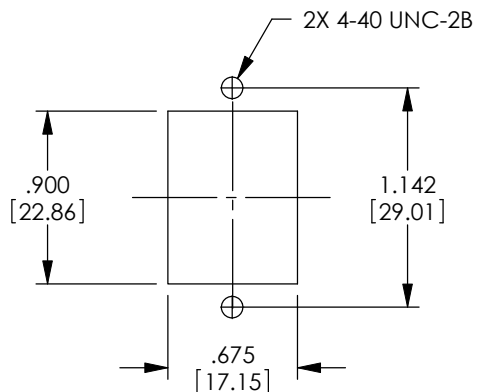
REVISIONS			
REV	DESCRIPTION	DATE	APPROVED
E	ECN 5720: REVISED GOLD PLATE TO 30u, ALL NOTES, NEW FORMAT	9/20/11	D.FRISIELLO



RJ45K JACK
(8X8)



RJ45K JACK
(8X8)



RECOMMENDED
PANEL CUT OUT



NOTES:


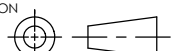
MATERIAL:
HOUSING: ABS, UL94V-0, COLOR: BLACK
CONTACTS: PHOSPHOR BRONZE
CONTACT PLATING: GOLD, 30μ INCHES OVER NICKEL PLATE.

MISCELLANEOUS:
RATING: CATEGORY 3
WIRING: STRAIGHT THROUGH

PACKAGING:
COMPONENT SHALL BE INDIVIDUALLY PACKAGED IN ACCORDANCE WITH L-COM SPECIFICATION PS-0031.

RoHS Compliant ✓



UNLESS OTHERWISE SPECIFIED, DIMENSIONS ARE IN INCHES [mm] OVERALL CABLE LENGTH TOLERANCE: ≤12 [305] = +1 [25] / -0 >12 [305] ≤60 [1524] = +2 [51] / -0 >60 [1524] ≤120 [3048] = +4 [102] / -0 >120 [3048] ≤300 [7620] = +6 [152] / -0 >300 [7620] = +3% / -0% ALL OTHER DIMENSIONAL TOLERANCES: .X = ±.2 .XX = ±.02 .XXX = ±.005	APPROVALS	DATE	 45 BEECHWOOD DRIVE NORTH ANDOVER, MA 01845	
	DRAWN BY McCORMICK	04/04/01		
	CHECKED BY D.PARHAM	05/04/01	CATEGORY TELECOM/MODULAR	
	APPROVED BY R.CARRICK	05/04/01		
	CONFIGURATION DETAILS OF UNDIMENSIONED FEATURES MAY VARY	PRODUCT DESCRIPTION RJ45 (8 X 8) KEYED STRAIGHT WIRED COUPLER		
		SIZE A	FSCM NO. 43321	DWG. NO. ECF504B-8SK
	COLOR VARIATIONS MAY OCCUR	SCALE: NONE		CAD FILE: ECF504B-8SK.SLDDRW