

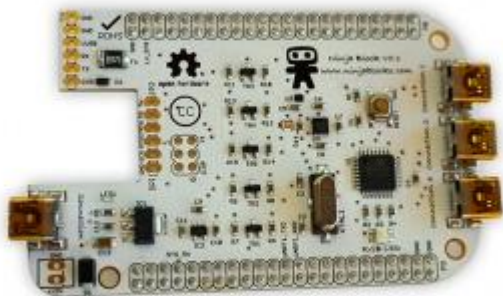
# CircuitCo/BeagleBone Ninja

## Contents

[\[hide\]](#)

- [1 Descriptions](#)
- [2 Specifications](#)
  - [2.1 Electrical Specifications](#)
  - [2.2 Mechanical Specifications](#)
- [3 EEPROM](#)
- [4 Documentations](#)
- [5 Vendors](#)
- [6 Manufacturer's Link](#)

## Descriptions



The BeagleBone Ninja Cape features an Atmega328 microcontroller that interfaces with BeagleBone via UART1. This cape is featured in the latest Ninja Blocks, which is a cloud enabled computers that receives input from different sensors. Sensors are connected to the cape via 4 mini-USB ports.

## Specifications

## Electrical Specifications

Power	3.3V via expansion connector 5V via expansion connector
Connectors	Two 46-position connectors 4 mini-USB connectors

## Mechanical Specifications

Size	2.15" x 3.40"
Layers	4
PCB Thickness	.062"
RoHS Compliant	Yes

## EEPROM

EEPROM Support	Yes
Board Name	BeagleBone Ninja
Version	1.2
Manufacturer	BeagleBoardToys
Part Number	BB-BONE-NINJA-01
Pins Used	TBD

## Documentations

Open Source	Yes
System Reference Manual	TBD
Schematics	EAGLE, PDF
PCB Files	EAGLE
Gerber Files	Yes
Bills of Materials	Yes