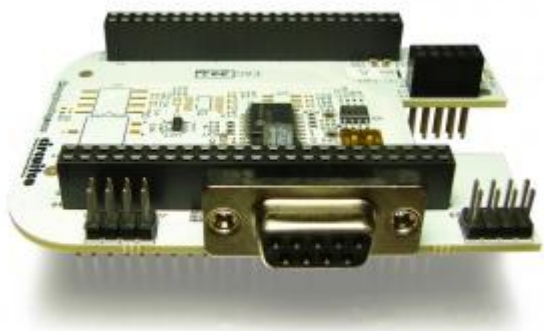


CircuitCo:CircuitCo/BeagleBone RS485

Contents

- [1 Descriptions](#)
- [2 Specifications](#)
 - [2.1 Electrical Specifications](#)
 - [2.2 Mechanical Specifications](#)
- [3 EEPROM](#)
- [4 Documentations](#)
- [5 Vendors](#)
- [6 Manufacturer's Link](#)

Descriptions



The BeagleBone RS485 Cape provides an RS485 interface to the BeagleBone via a standard D-Sub 9 female serial connector. This connector is located to the side so it doesn't interfere with any capes stacked above it. Users will have the freedom of selecting four different UART interfaces via jumpers.

Specifications

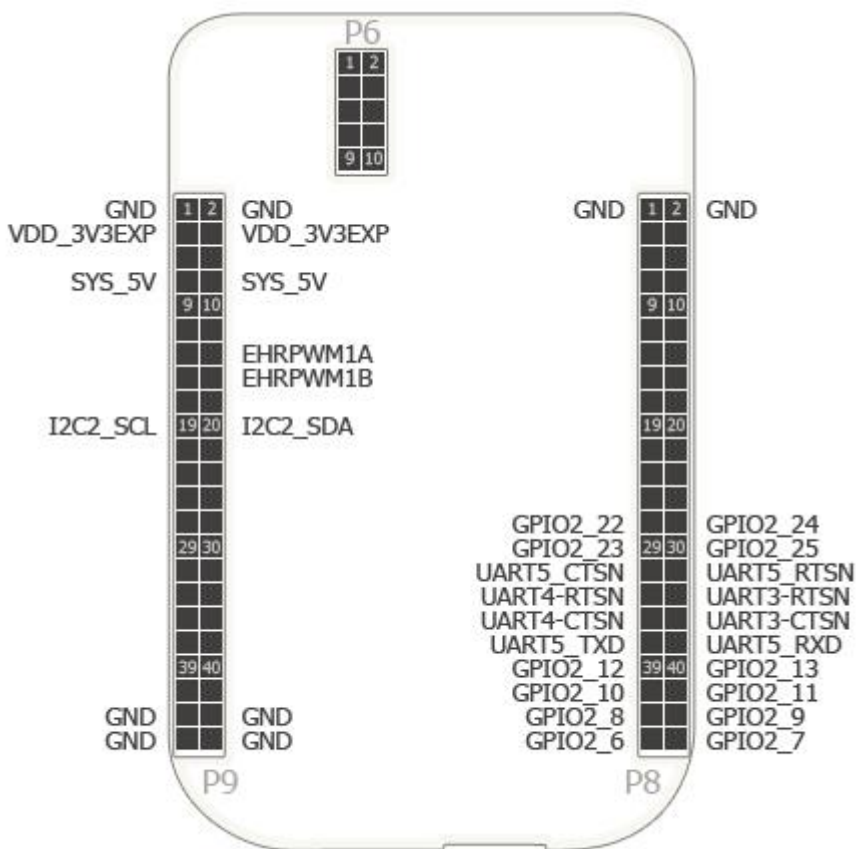
Electrical Specifications

Power 3.3V via expansion header
Indicators Power LED
Connectors Two 46-position connectors
One 10-position connector

Mechanical Specifications

Size 3.40" x 2.45"
Layers 4
PCB Thickness .062"
RoHS Compliant Yes

EEPROM



EEPROM Support Yes

Board Name BeagleBone RS485 Cape

Version 00A0

Manufacturer BeagleBoardToys

Part Number BB-BONE-SERL-04

Pins Used TBD

Documentations

Open Source	Yes
System Reference Manual	Yes
Schematics	PDF, OrCAD
PCB Files	Allegro
Gerber Files	Yes
Bills of Materials	Yes