

Surface Mount Rectifier



Features:

- Low Profile Package
- For Surface Mounted Applications
- High Current Capability
- Built-In Strain Relief, Ideal for Automated Placement
- High Temperature Soldering : 260°C/10 seconds at Terminals

Mechanical Data

- Case : JEDEC DO-214AA molded plastic over passivated chip
- Terminals : Solder Plated, solderable per MIL-STD- 750, Method 2026
- Polarity : Colour band denotes cathode end
- Weight : 0.003oz, 0.093g

Maximum Ratings and Thermal Characteristics

Ratings at 25°C ambient temperature unless otherwise specified

Characteristic	Symbol	S2G-13-F	S2M-13-F	Units
Maximum repetitive peak reverse voltage	V_{RRM}	400	1,000	V
Maximum RMS voltage	V_{RMS}	280	700	V
Maximum DC blocking voltage	V_{DC}	400	1,000	V
Maximum average forward rectified current at $T_L=100^\circ\text{C}$	$I_{F(AV)}$	2		A
Peak forward surge current @ $T_L = 110^\circ\text{C}$ 8.3ms single half-sine-wave superimposed on rated load (JEDEC Method)	I_{FSM}	50		A
Maximum instantaneous forward voltage at 2A	V_F	1.15		V
Maximum DC reverse current $T_A=25^\circ\text{C}$ at rated DC blocking voltage $T_A=125^\circ\text{C}$	I_R	5 125		μA
Typical junction capacitance (Note 1)	C_J	30		pF
Typical thermal resistance (Note 2)	$R_{\theta JA}$ $R_{\theta JL}$	53 16		$^\circ\text{C/W}$
Operating junction and storage temperature range	T_{JTS}, T_G	-55 to +150		$^\circ\text{C}$

Note:

(1) Measured at 1MHz and applied reverse voltage of 4V

(2) Thermal resistance from junction to ambient and junction to lead PCB mounted on 0.27" x 0.27" (7 x 7mm²) copper pad areas

Surface Mount Rectifier



FIG.1 – FORWARD DERATING CURVE

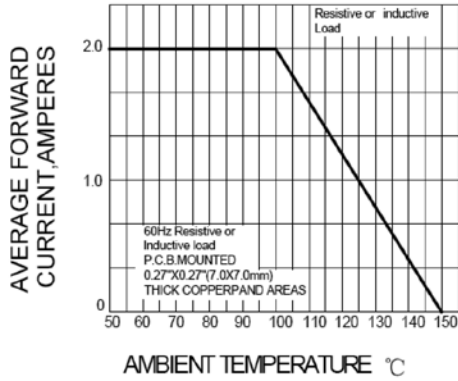


FIG.2 PEAK FORWARD SURGE CURRENT

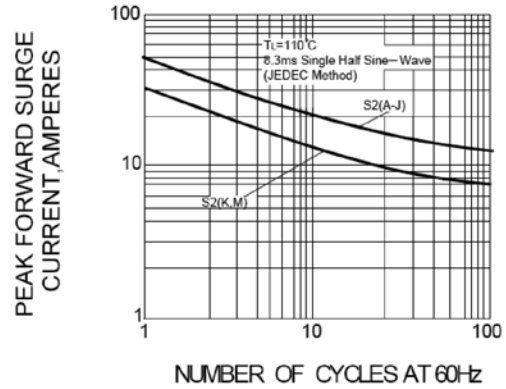


FIG.3 -- TYPICAL FORWARD CHARACTERISTICS

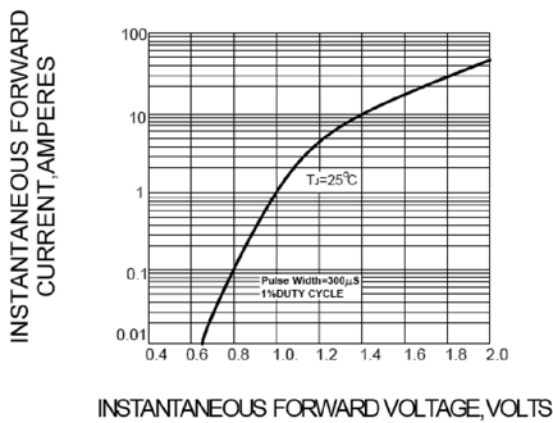


FIG.4 – TYPICAL REVERSE CHARACTERISTICS

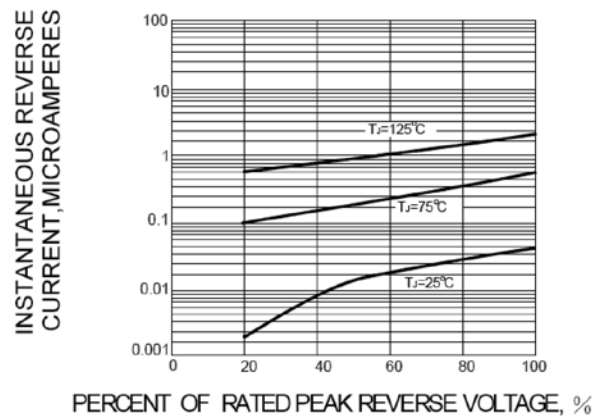
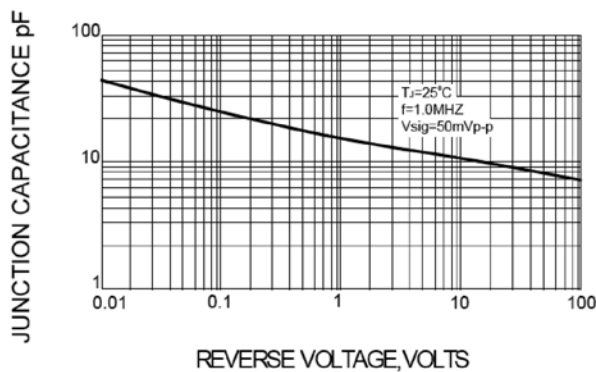


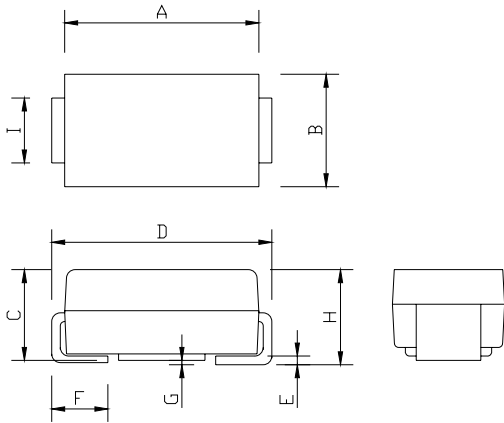
FIG.5.TYPICAL JUNCTION CAPACITANCE



Surface Mount Rectifier



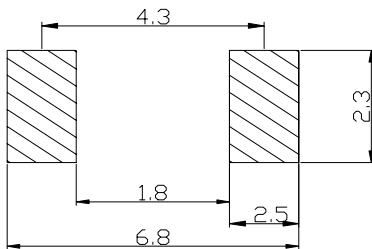
Package Outline Dimensions



DO-214AA(SMB)		
Dim.	Min.	Max.
A	4.3	4.7
B	3.3	3.7
C	2	2.3
D	5.05	5.55
E	0.2 Typ.	
F	0.95	1.55
G	0.2 Max.	
H	2.1	2.5
I	1.85	2.15

Dimensions : Millimetres

Soldering Footprint



Dimensions : Millimetres

Package Information

Device	Package	Shipping
S2G-13-F	DO-214AA(SMB)	3,000 / Tape & Reel
S2M-13-F		

Part Number Table

Description	Part Number
Surface Mount Rectifier	S2G-13-F
	S2M-13-F

Important Notice : This data sheet and its contents (the "Information") belong to the members of the Premier Farnell group of companies (the "Group") or are licensed to it. No licence is granted for the use of it other than for information purposes in connection with the products to which it relates. No licence of any intellectual property rights is granted. The Information is subject to change without notice and replaces all data sheets previously supplied. The Information supplied is believed to be accurate but the Group assumes no responsibility for its accuracy or completeness, any error in or omission from it or for any use made of it. Users of this data sheet should check for themselves the Information and the suitability of the products for their purpose and not make any assumptions based on information included or omitted. Liability for loss or damage resulting from any reliance on the Information or use of it (including liability resulting from negligence or where the Group was aware of the possibility of such loss or damage arising) is excluded. This will not operate to limit or restrict the Group's liability for death or personal injury resulting from its negligence. Multicomp is the registered trademark of the Group. © Premier Farnell plc 2012.

