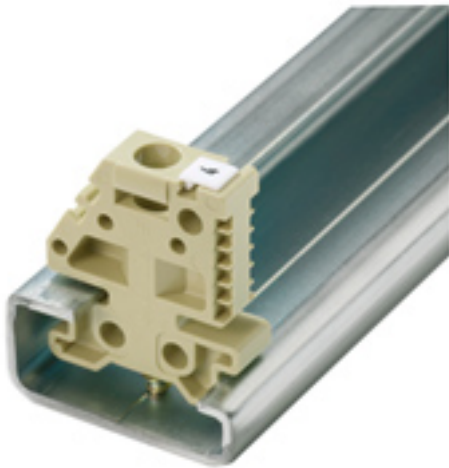


Accessories
EWK 1

Weidmüller Interface GmbH & Co. KG
Klingenbergstraße 16
D-32758 Detmold
Germany
Fon: +49 5231 14-0
Fax: +49 5231 14-292083
www.weidmueller.com



Weidmüller's range of products includes end brackets that guarantee a permanent, reliable mounting on the terminal rail and prevent sliding. Versions with and without screws are available. The end brackets include marking options, also for group markers, and also a test plug holder.

General ordering data

| | |
|------------|----------------------------|
| Order No. | 0206160000 |
| Type | EWK 1 |
| Version | Accessories, End bracket |
| GTIN (EAN) | 4008190080020 |
| Qty. | 50 pc(s). |

**Accessories
EWK 1**

Weidmüller Interface GmbH & Co. KG
 Klingenbergstraße 16
 D-32758 Detmold
 Germany
 Fon: +49 5231 14-0
 Fax: +49 5231 14-292083
 www.weidmueller.com

Technical data

Dimensions and weights

| | | | |
|------------|--------|--------------------------|---------|
| Length | 27 mm | Width | 9 mm |
| Height | 31 mm | Height of lowest version | 34.5 mm |
| Net weight | 4.34 g | | |

Temperatures

| | |
|-----------------------|---------------------|
| Operating temperature | Storage temperature |
|-----------------------|---------------------|

Additional technical data

| | |
|---------|-------------------|
| Version | For the terminals |
|---------|-------------------|

Dimensions

| | |
|--------------|---------|
| TS 32 offset | 13.5 mm |
|--------------|---------|

Material data

| | | | |
|---------------------------|---------|--------|-------|
| Material | Plastic | Colour | Beige |
| UL 94 flammability rating | V-2 | | |

System specifications

| | | | |
|----------------|-------------|---------------|-------|
| Product family | Accessories | Mounting rail | TS 32 |
|----------------|-------------|---------------|-------|

Classifications

| | | | |
|------------|-------------|------------|-------------|
| ETIM 2.0 | EC001041 | ETIM 3.0 | EC001041 |
| UNSPSC | 30-21-18-01 | eClass 4.1 | 27-08-10-03 |
| eClass 5.1 | 27-08-10-03 | eClass 6.0 | 27-08-10-03 |
| eClass 7.0 | 27-08-10-03 | | |

Product information

| | |
|------------------------------|--|
| Descriptive text accessories | For the WEW 32/1, the hinged tag carrier SchT 15/6 No. 1269060000, with marking labels S 10 and WS 12 can be used. |
|------------------------------|--|

Approvals

Approvals



Downloads

| | |
|------|--|
| DXF | 04520_EWK_1_DXF.dxf |
| STEP | 0206160000_04520_EWK_1_TS_32_M4X18_STP.stp |