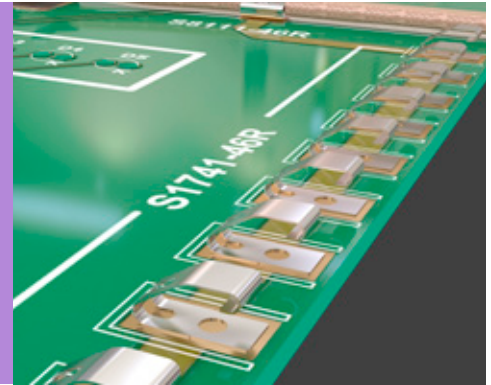


Spring Contacts

Grounding/RFI Contacts

- Packaged in EIA-481-2 compliant tape and reel.
- 'S' shaped contact for multi directional contact points.
- Spring loaded contacts maintain a positive force and stable electrical contact.
- Small PCB footprint.



2.5mm HIGH		2.75mm HIGH									
		<table border="1"> <thead> <tr> <th>ORDER CODE</th> <th>FINISH</th> </tr> </thead> <tbody> <tr> <td>S7071-42R</td> <td>Tin </td> </tr> </tbody> </table>	ORDER CODE	FINISH	S7071-42R	Tin	<table border="1"> <thead> <tr> <th>ORDER CODE</th> <th>FINISH</th> </tr> </thead> <tbody> <tr> <td>S7081-42R</td> <td>Gold + Tin </td> </tr> </tbody> </table>	ORDER CODE	FINISH	S7081-42R	Gold + Tin
ORDER CODE	FINISH										
S7071-42R	Tin										
ORDER CODE	FINISH										
S7081-42R	Gold + Tin										
<p>Recommended PC Board Pattern</p>											
<p>Recommended PC Board Pattern</p>		<table border="1"> <thead> <tr> <th>ORDER CODE</th> <th>FINISH</th> </tr> </thead> <tbody> <tr> <td>S9001-05R</td> <td>Gold </td> </tr> <tr> <td>S9001-46R</td> <td>Tin </td> </tr> </tbody> </table>		ORDER CODE	FINISH	S9001-05R	Gold	S9001-46R	Tin		
ORDER CODE	FINISH										
S9001-05R	Gold										
S9001-46R	Tin										
<h3>4.85mm HIGH</h3>											
		<table border="1"> <thead> <tr> <th>ORDER CODE</th> <th>FINISH</th> </tr> </thead> <tbody> <tr> <td>S9001-05R</td> <td>Gold </td> </tr> <tr> <td>S9001-46R</td> <td>Tin </td> </tr> </tbody> </table>		ORDER CODE	FINISH	S9001-05R	Gold	S9001-46R	Tin		
ORDER CODE	FINISH										
S9001-05R	Gold										
S9001-46R	Tin										
<p>Recommended PC Board Pattern</p>											

All dimensions in mm.