

EL-GFX-1

Temperature Data Logger with Graphic LCD Screen

ORDERING INFORMATION

Standard Data Logger
(Data Logger, 2 x Batteries, USB cover,
Mounting Clip, Micro USB cable) EL-GFX-1

Replacement Battery
(2 Required) BAT 3V6 ½AA

FEATURES

- Rugged and robust IP67 construction
- -30 to +80 °C (-22 to +176 °F) measurement range
- Logging rates between 10 seconds and 12 hours
- Stores over 250,000 readings
- On screen menu and graphing to start, stop, review and restart the logger in the field
- Micro USB interface for PC based set-up and data download
- Immediate, delayed, push-button or temperature triggered start mode
- User-programmable alarm thresholds
- Graphic LCD shows real-time readings, graph and current status
- User set audible alarm
- Highly visible confidence/alarm LEDs
- Supplied with user replaceable ½ AA batteries



The EL-GFX-1 standalone USB data logger measures and stores up to 251,928 temperature readings over a -30 to +80°C (22 to +176°F) range and at a resolution of 0.1°C. Using the Windows control software (available as a free-download from www.easylogusb.com), users can quickly set up the data logger and view downloaded data by connecting the device to the PC's USB port using the supplied cable.

The data logger features a high-contrast graphic LCD and three-input buttons. This allows users to start, stop and restart the data logger using on-screen menus. This menu also provides real-time analysis of data either as a data summary (showing highest & lowest readings and alarm conditions) or as a graph that updates as new data is added. Multiple data logging sessions can be stored on the device ready for upload to a PC at a later date.

The data logger's robust design provides IP-67 waterproof protection and the two replaceable ½AA batteries typically allow logging for up to one year.

| Specifications | Minimum | Typical | Maximum | Unit |
|-----------------------------------|-----------|-------------|------------|---------|
| Measurement range | -30 (-22) | | +80 (+176) | °C (°F) |
| Internal resolution | | 0.1 (0.1) | | °C (°F) |
| Accuracy (overall error) | | ±0.1 (±0.2) | ±0.5 (±1) | °C (°F) |
| Logging rate | every 10s | | every 1hr | - |
| Operating temperature range* | -30 (-22) | | +80 (+176) | °C (°F) |
| 2 x ½AA 3.6V Lithium Battery Life | | 1** | | Year |

* At temperatures below -5 °C the LCD will exhibit slower response times. The LCD will be disabled at temperatures under -20 °C and above 70 °C.

** At 25 °C and 10 minute logging rate with no alarm LEDs or sounder and minimal LCD use.

EL-GFX-1

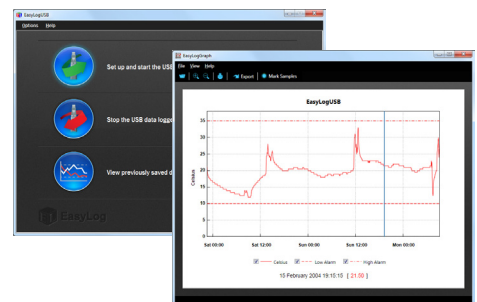
Temperature Data Logger with Graphic LCD Screen

EL-WIN-USB (CONTROL SOFTWARE)

Lascar's Easylog USB control software is available to download from www.easylogusb.com. Easy to install and use, the control software runs under Windows XP, Vista and Windows 7. The software is used to set-up the data logger as well as download, graph and export data to Excel. Each stored logging session is saved as a separate file.

The software allows the following parameters to be configured:

- Logger name
- Measurement parameter (°C or °F)
- Logging Rate (user-selectable between 10 seconds and 12 hours)
- High and low temperature alarms
- Immediate, delayed, push-button or temperature triggered start mode
- Disable or enable LEDs and sounder with delayed activation
- Display and backlight behaviour after button press



The latest version of the control software may be downloaded free of charge from www.easylogusb.com

DIMENSIONS

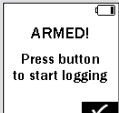
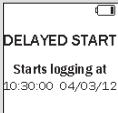





All dimensions in mm (inches)



EL-GFX-1

Temperature Data Logger with Graphic LCD Screen

MENU BUTTON FUNCTIONS AND LED SCREEN INDICATION

| | | | | |
|---|--|--|---|---|
|  <p>ARMED! Press button to start logging</p> <p>Button</p> |  <p>DELAYED START Starts logging at 10:30:00 04/03/12</p> <p>Time</p> |  <p>DELAYED START Starts logging when temperature >36.2°C</p> <p>Value</p> | <p>START</p> <ul style="list-style-type: none"> Loggers can be started immediately on a button press, delayed to a specific time or delayed to specific temperature reading |  <p>MUTE ALARM</p> <ul style="list-style-type: none"> Audible alarm can be muted if required |
|  <p>STOP</p> <ul style="list-style-type: none"> The logger can be stopped using the buttons | | | <p>SUMMARY DATA</p> <ul style="list-style-type: none"> Summary screen displays max/min log and last log. Reset function clears summary if required | |
|  <p>DISPLAY DATA</p> <ul style="list-style-type: none"> Data can be displayed on screen in tabular or graphical format | |  <p>LOCK MENU BUTTONS</p> <ul style="list-style-type: none"> "Locked" mode can be unticked during PC set-up if required When in locked mode, the logger can only be stopped and re-started using a PC loaded with the unit's configuration software | | |

BATTERY REPLACEMENT

We recommend that you replace the batteries every 12 months, or prior to logging critical data.

The EL-GFX-1 does not lose its stored readings when the batteries are discharged or when the batteries are replaced; however, the data logging process will be stopped. If the batteries are changed within a 2 minute window the EL-GFX-1 will retain its settings (internal clock and logging mode). This will allow logging to be restarted without additional connection to a PC via USB.

Only use 2 x 3.6V ½AA lithium batteries. Do not mix battery types and do not mix new and old batteries. Before replacing the batteries, unplug the EL-GFX-1 from the PC.

WARNING

Handle lithium batteries carefully, observe warnings on battery casing. Dispose of in accordance with local regulations.

Module House
Whiteparish, Salisbury
Wiltshire SP5 2SJ
UK
T +44 (1794) 884567
F +44 (1794) 884616
E sales@lascar.co.uk

4258 West 12th Street
Erie
PA 16505
USA
T +1 (814) 835 0621
F +1 (814) 838 8141
E us-sales@lascarelectronics.com

8th Floor, China Aerospace Centre
143 Hoi Bun Road
Kwun Tong, Kowloon
HONG KONG
T +852 2797 3219
F +852 2343 6187
E saleshk@lascar.com.hk



www.lascarelectronics.com

