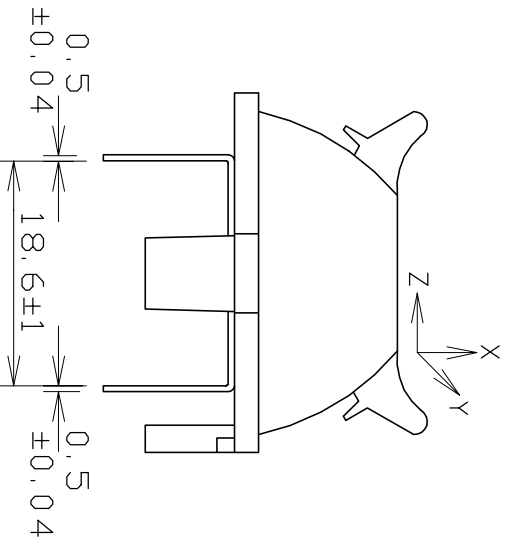
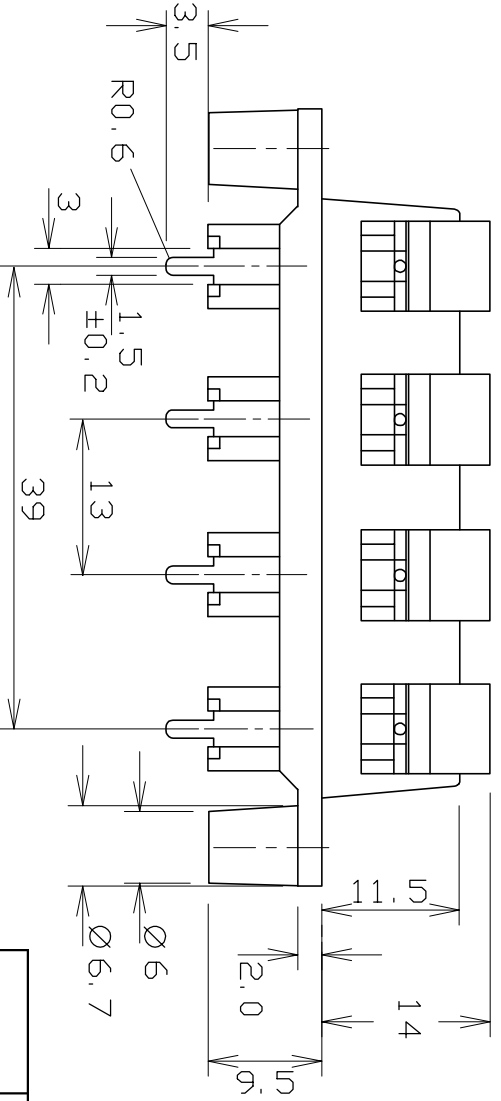


RATING: 7A @60V AC  
 CONTACT RESISTANCE: <20mΩ @1A 25°C  
 INSULATION RESISTANCE: >100MΩ @500V DC  
 DIELECTRIC WITHSTANDING VOLTAGE: 1 minute @1200V AC  
 OPERATING FORCE 800 ±100gm  
 WIRE RETENTION (22AWG) 1kg-X / 500g-Y / 1kg-Z



PART NO	TERMINAL COLOURS							
	FE6930	1	2	3	4	5	6	7
	RED	BLACK	BLACK	RED	RED	BLACK	BLACK	RED

**Cliff Electronic Components Ltd.**  
 76 Holmehorne Avenue, Holmehorne Industrial Estate,  
 Redhill, Surrey, RH1 2PF, England, UK  
 Tel: 01737-771315 Fax: 01737-766012 Website: www.cliffuk.co.uk

DIMENSIONS IN MILLIMETERS UNLESS OTHERWISE STATED. WORK TO DIMENSIONS. REMOVE ALL BURRS. IF IN DOUBT ASK.  
 MATERIAL: ABS UL-94 HB / BRASS CZ108 / SPRING STEEL  
 FINISH: AS MOULDED / NICKEL PLATED  
 DRAWN: T.J.O. APPROVED: D.P.J.

TITLE: PUSH TERMINAL (8 WAY)  
 DRWG. No. FE6930

3rd ANGLE PROJECTION: DO NOT SCALE  
 FORM: ADDRWC

**ROHS COMPLIANT**

TOLERANCE  
 NO DEC. PLACE ±  
 1 DEC. PLACE ±  
 2 DEC. PLACE ±  
 HOLE Ø ±  
 ANGLES ±  
 UNLESS OTHERWISE STATED

NO.	REVISION	DATE
1	ISSUED	24/03/99
2	WAS 1st ANGLE-UPDATE	10/01/11